

Cat. **Nuvola**

**Cat. Nuvola - Dedar**

**Patchwork  
Proust**

**bolzan**

# PATCHWORK | DEDAR



**COMPOSITION**

60% PES FR TREVIRA  
40% PES FR

**COLOUR FASTNESS**

**TO LIGHT**

Note 6-7  
EN ISO 105-B02

**PILLING**

Note 3-4 @ 5000 rubs  
ISO 12945

**MARTINDALE**

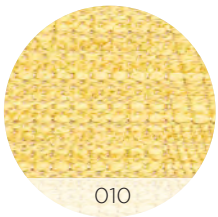
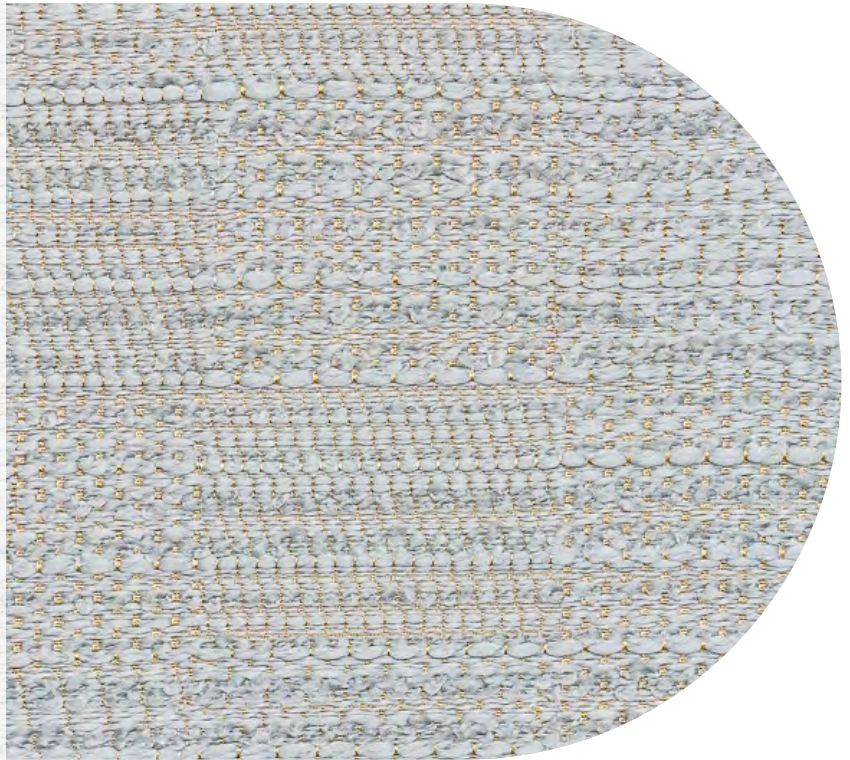
11.000 rubs  
UNI ENI ISO 12947-2

**CARE**

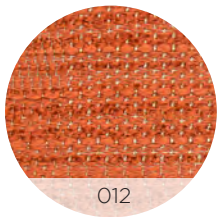


**NOTES**

Slight differences in colour may occur



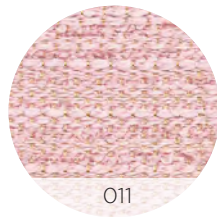
010



012



014



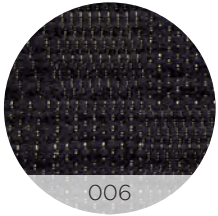
011



004



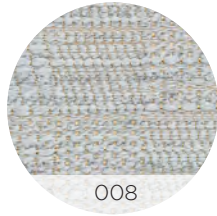
005



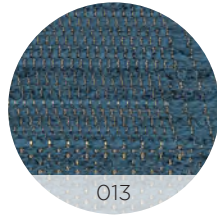
006



007



008



013

# PROUST | DEDAR



**COMPOSITION**

100% PES

**COLOUR FASTNESS**

**TO LIGHT**

Note 3-4

EN ISO 105-B02

**PILLING**

Note 5 @ 5.000 rubs

ISO 12945

**MARTINDALE**

40.000 rubs

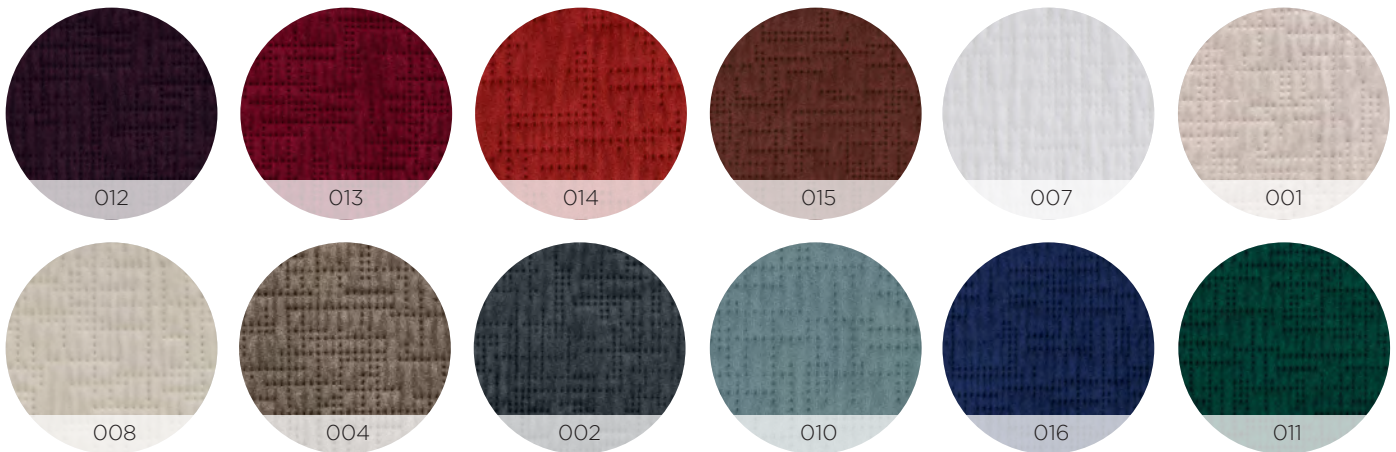
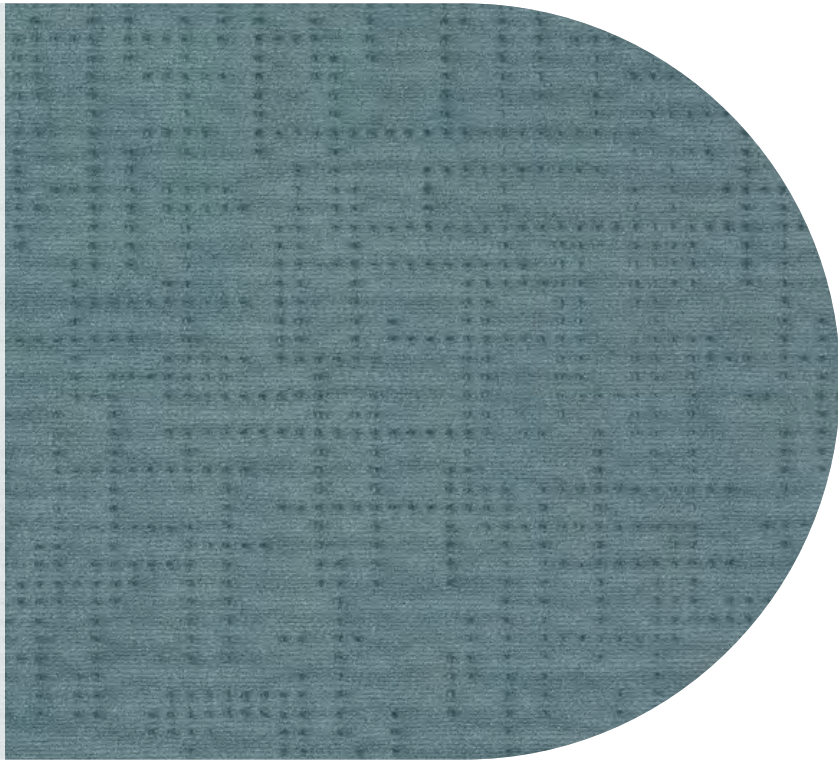
UNI ENI ISO 12947-2

**CARE**



**NOTES**

Slight differences in colour may occur





**bolzan**

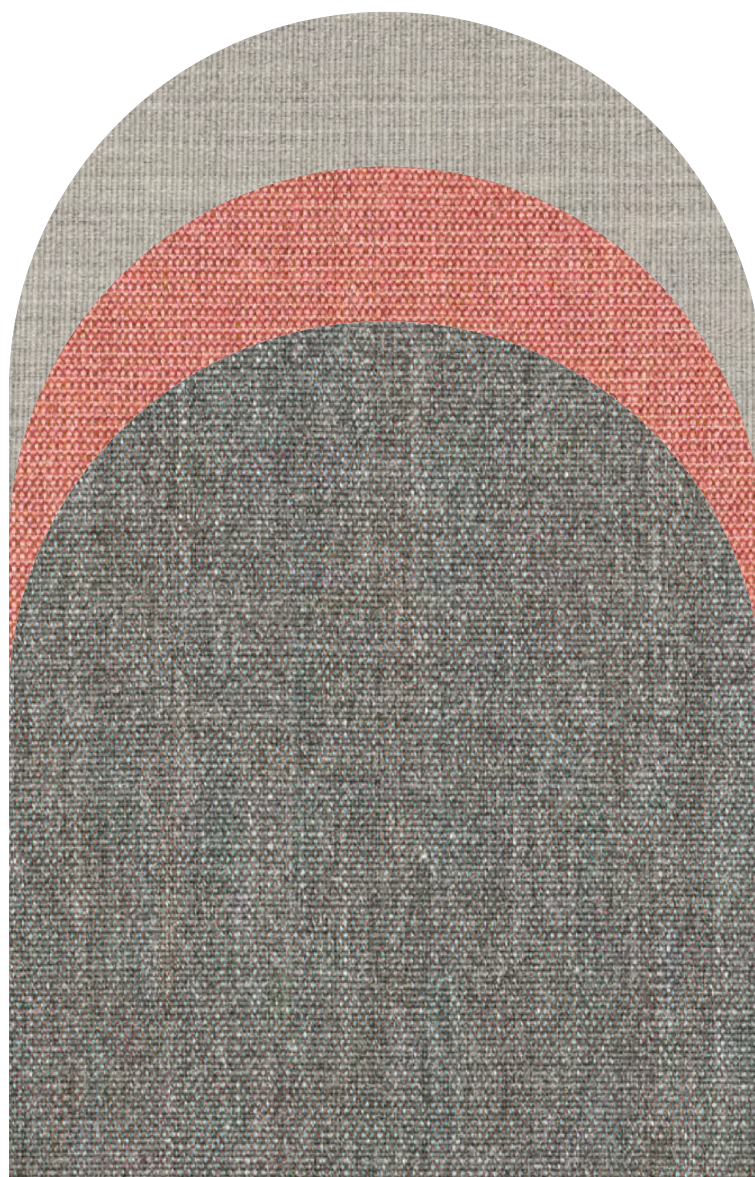
# Cat. **Nuvola - Kvadrat**

**Canvas2**

**Raas**

**Sky**

# CANVAS 2 | KVADRAT





**COMPOSITION**

90% new wool  
10% nylon

**COLOUR FASTNESS**

**TO LIGHT**

Note 5-7  
ISO 105-B02

**PILLING**

Note 4-5  
EN ISO 12945

**MARTINDALE**

100.000 rubs  
EN ISO 12947

**FIRETEST**

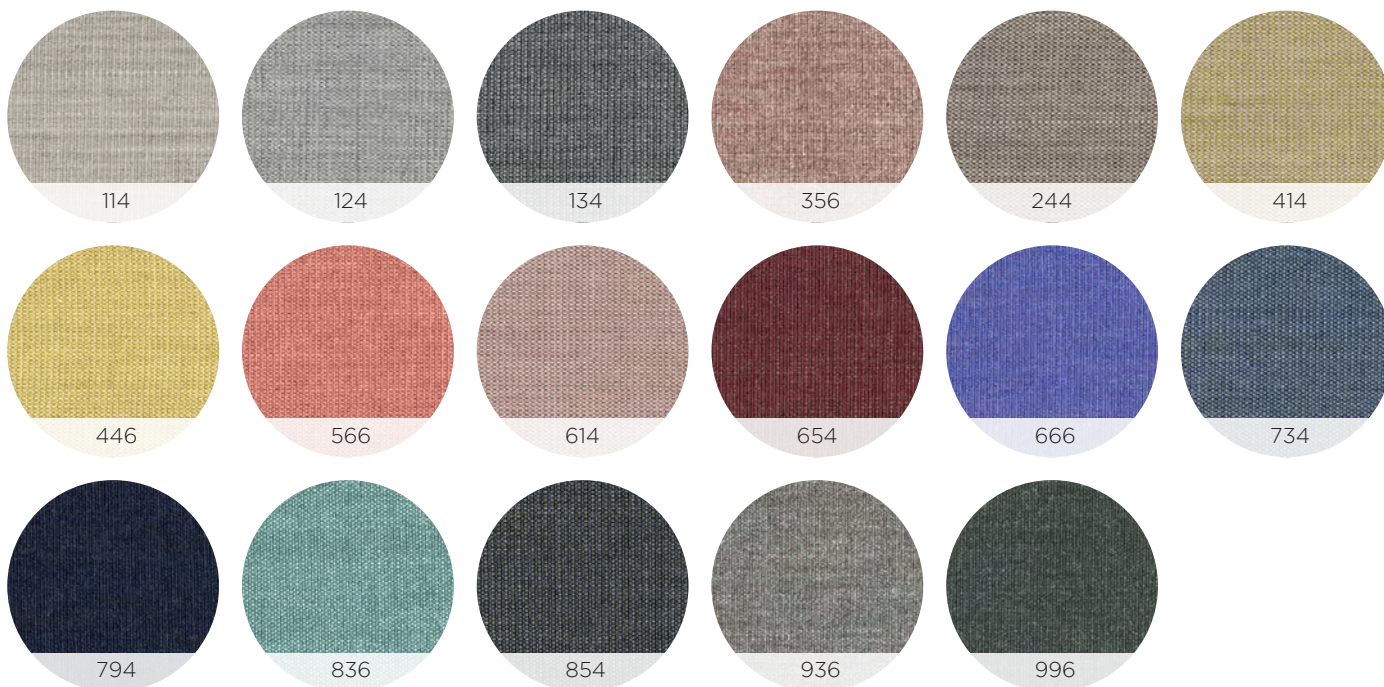
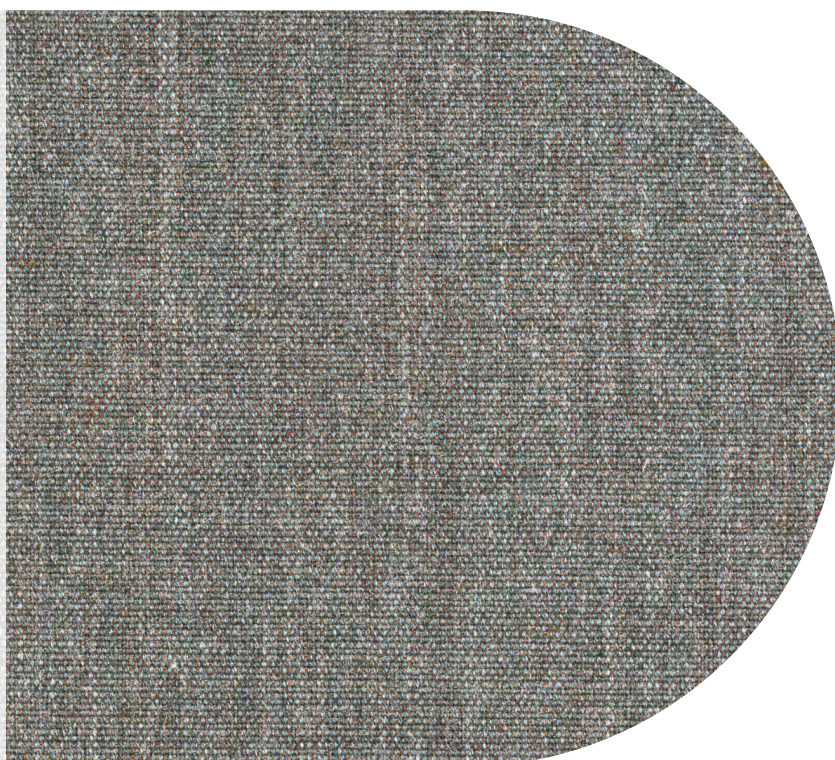
EN 1021 - 1/2; DIN 4102 B2; Önorm B1/Q1;  
NF D60 013; UNI 9175 11M; IMO A.652(16);  
US Cal Tech Bull 117; BS 5852 part 1;  
BS 5852 ignition source 2-3

**CARE**

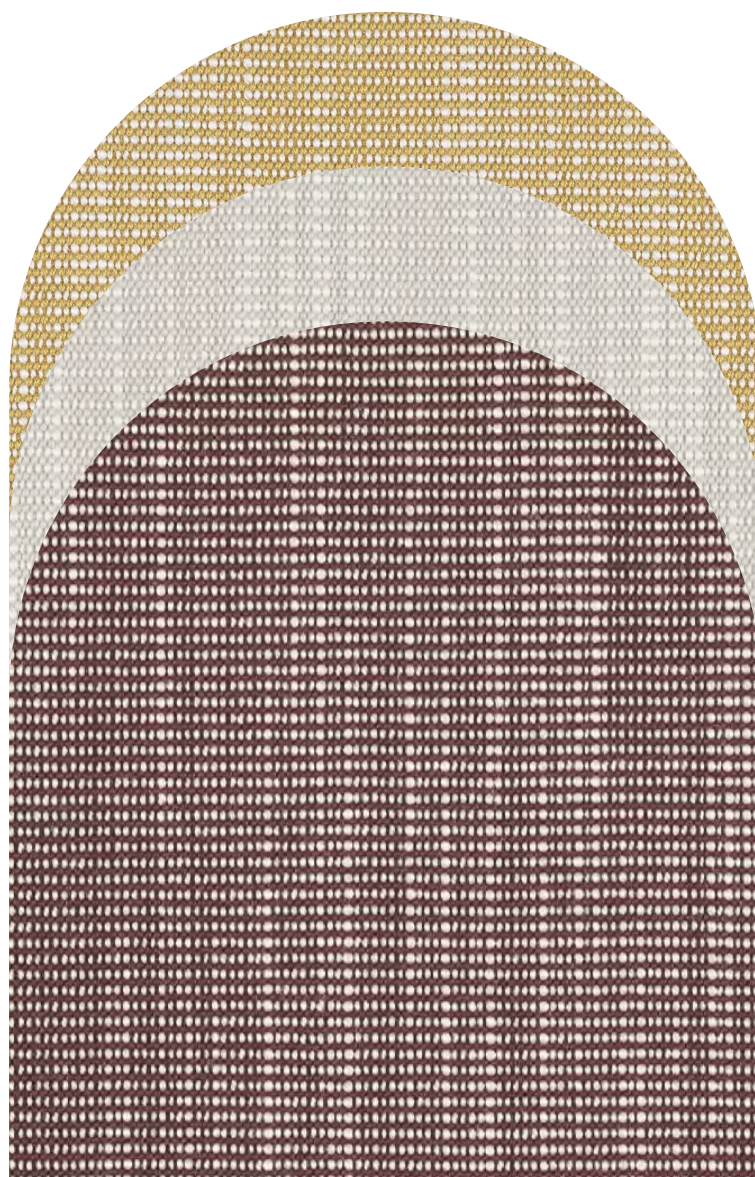


**NOTES**

Slight differences in colour may occur



# RAAS | KVADRAT



**COMPOSITION**

92% new wool  
8% nylon

**COLOUR FASTNESS**

**TO LIGHT**

Note 6-7  
ISO 105-B02

**PILLING**

Note 4-5  
EN ISO 12945

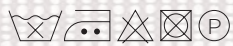
**MARTINDALE**

100.000 rubs  
EN ISO 12947

**FIRETEST**

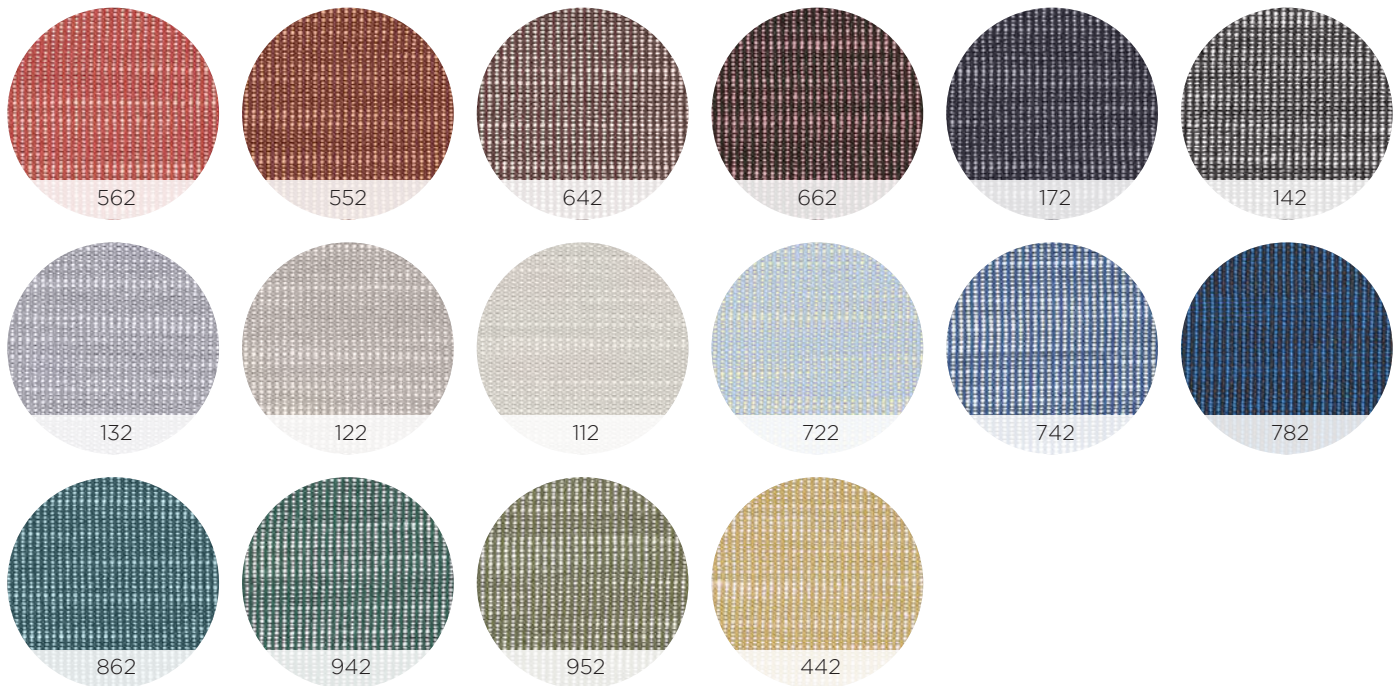
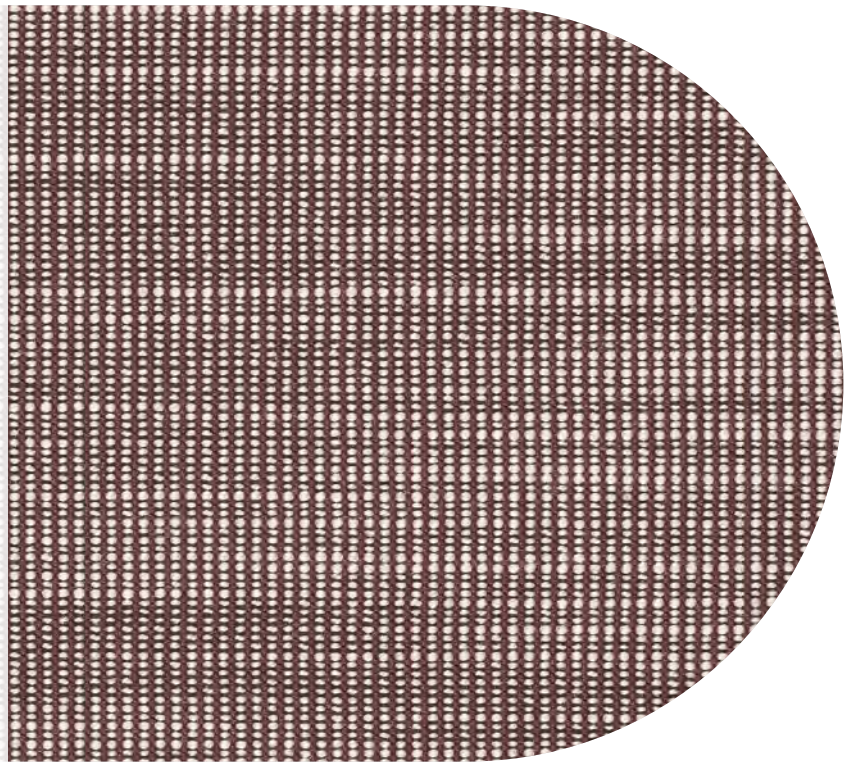
BS 5852 ignition source 3; BS 5852 part1;  
EN 1021 - 1/2; Önorm B2/Q1; NF D60 013;  
UNI 9175 1IM; IMO FTP code 2010: part8;  
US Cal Bull 117-2013;

**CARE**

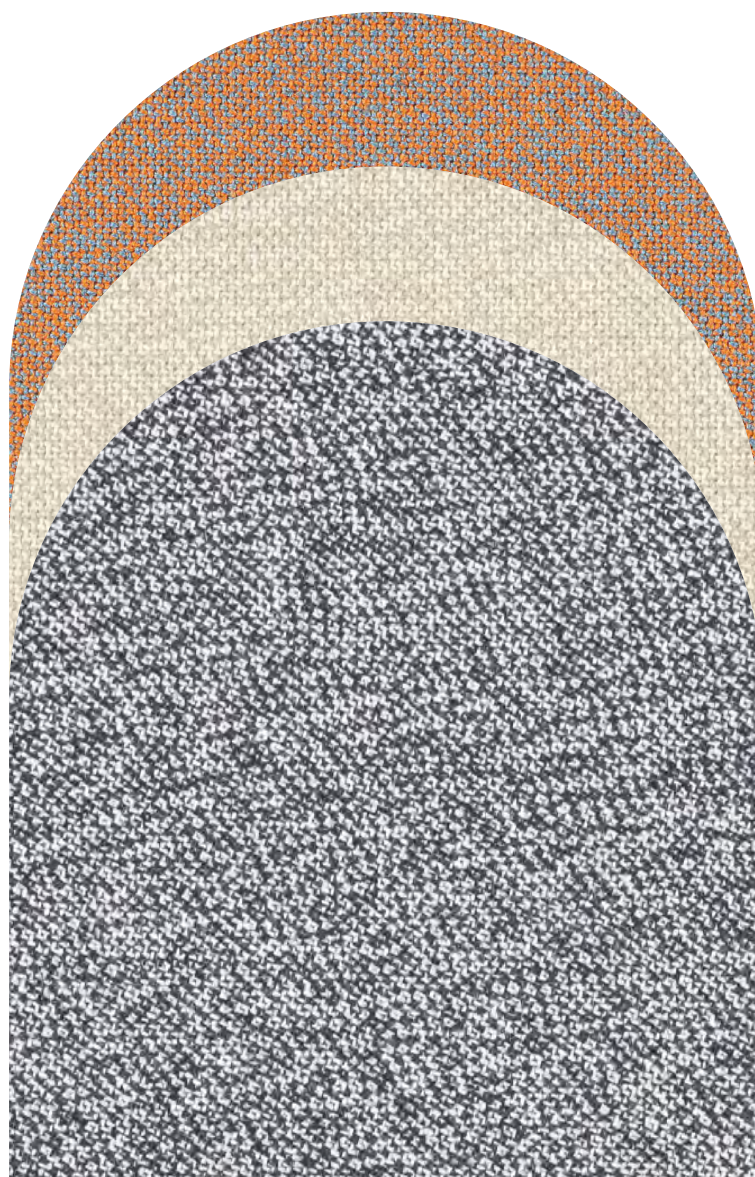


**NOTES**

Slight differences in colour may occur



# SKYE | KVADRAT



**COMPOSITION**

90% new wool  
10% nylon

**COLOUR FASTNESS  
TO LIGHT**

Note 6  
ISO 105-B02

**PILLING**

Note 4  
EN ISO 12945

**MARTINDALE**

60.000 rubs  
EN ISO 12947

**FIRETEST**

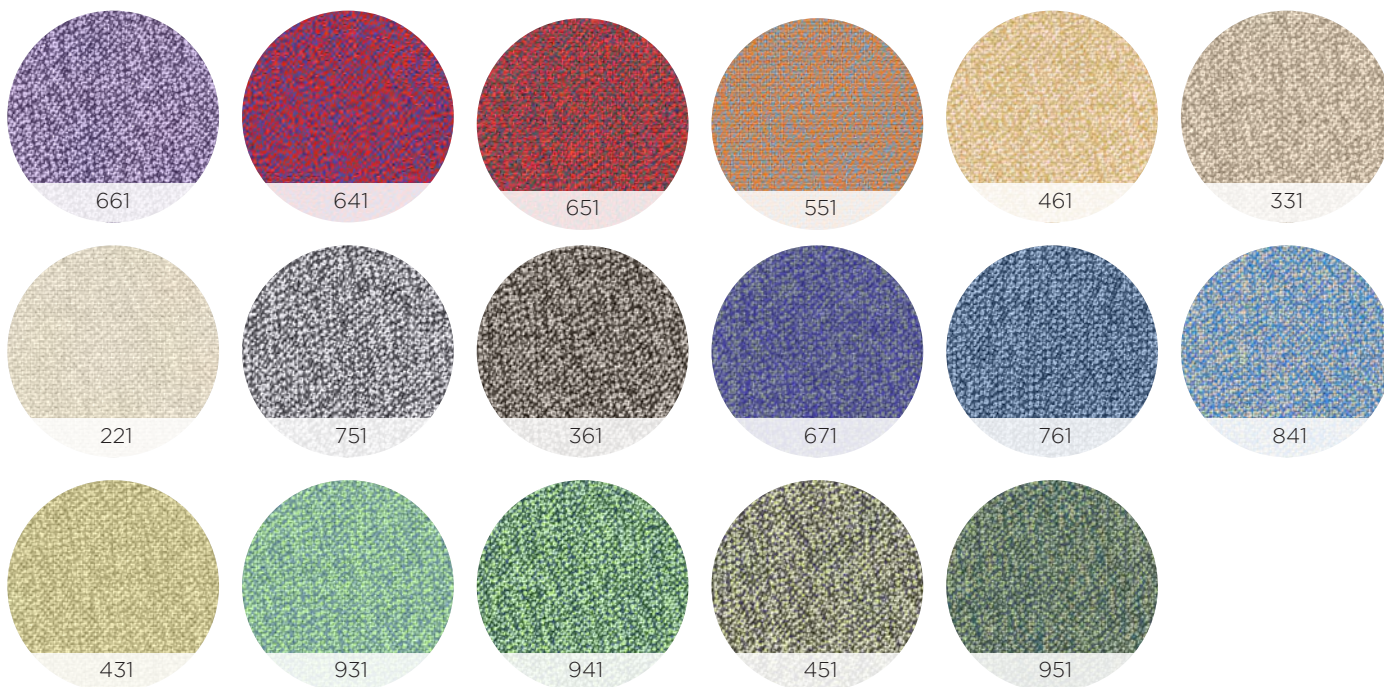
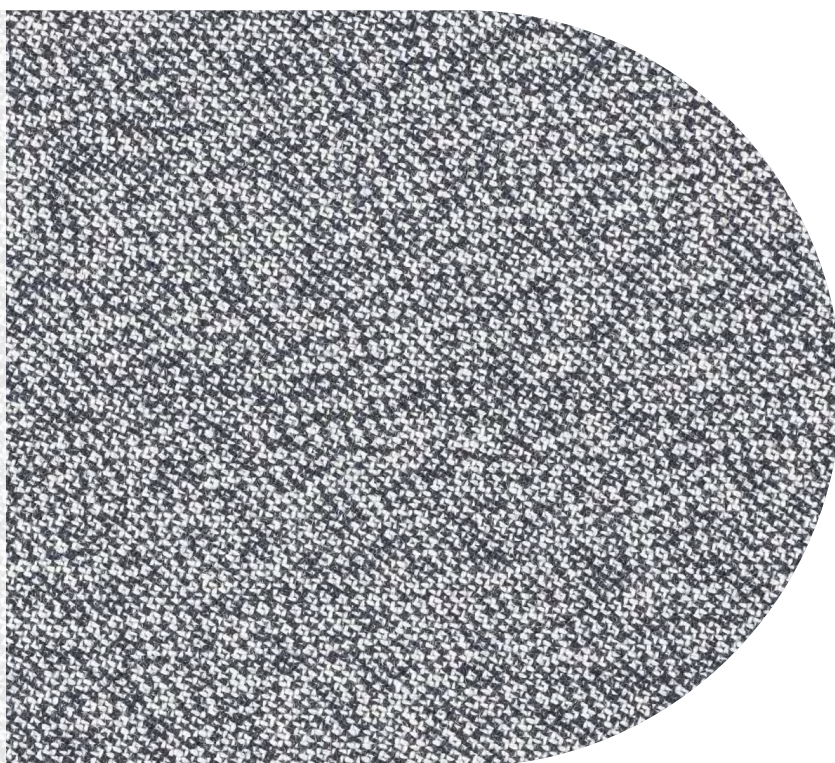
EN 1021-1/2; NF D60 013; UNI 9175 11M;  
IMO FTP code 2010:part8;  
US Cal Bull 117-2013; BS 5852 part1;  
BS 5852 crib 5 with treatment

**CARE**



**NOTES**

Slight differences in colour may occur





**bolzan**

Cat. **Nuvola**

# Cat. **Nuvola - Rubelli**

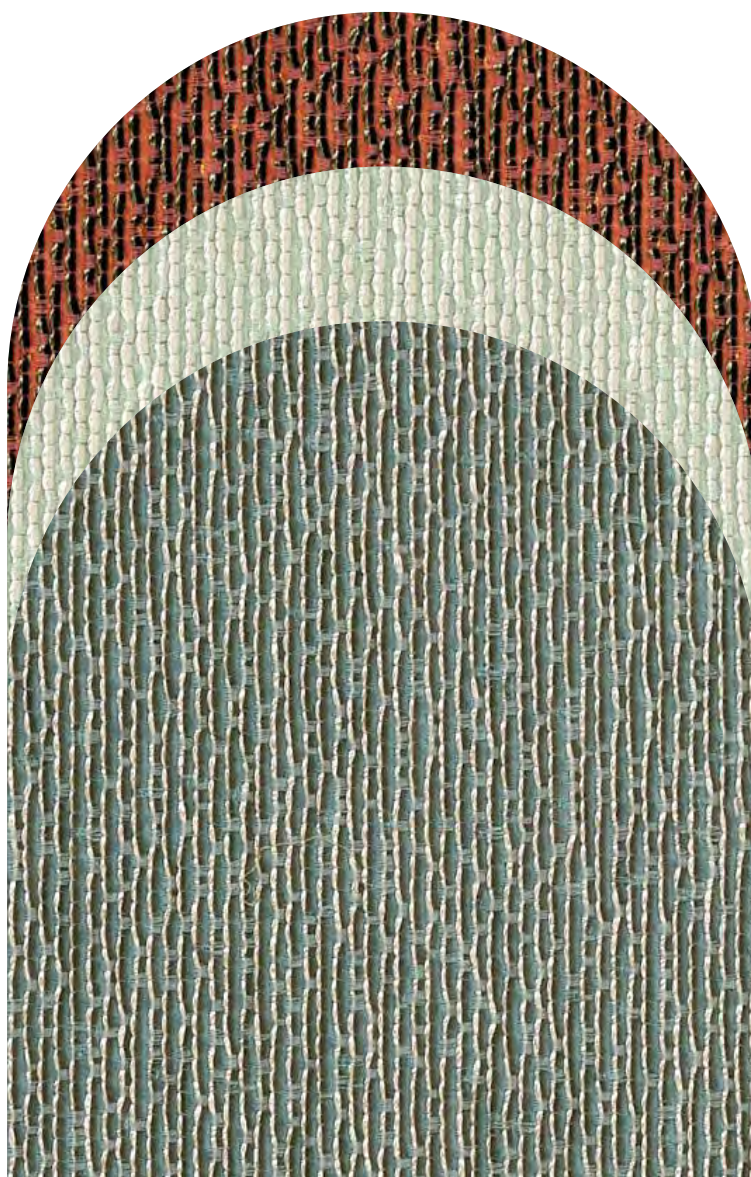
**Almorò**

**Beat**

**Song**

**bolzan**

# ALMORÒ | RUBELLI





**COMPOSITION**

40% polyamide  
29% spun ryon  
29% cotton  
2% a

**COLOUR FASTNESS  
TO LIGHT**

Note 4-5 average

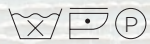
**MARTINDALE**

50.000 rubs

**FIRETEST**

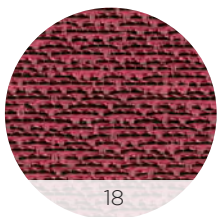
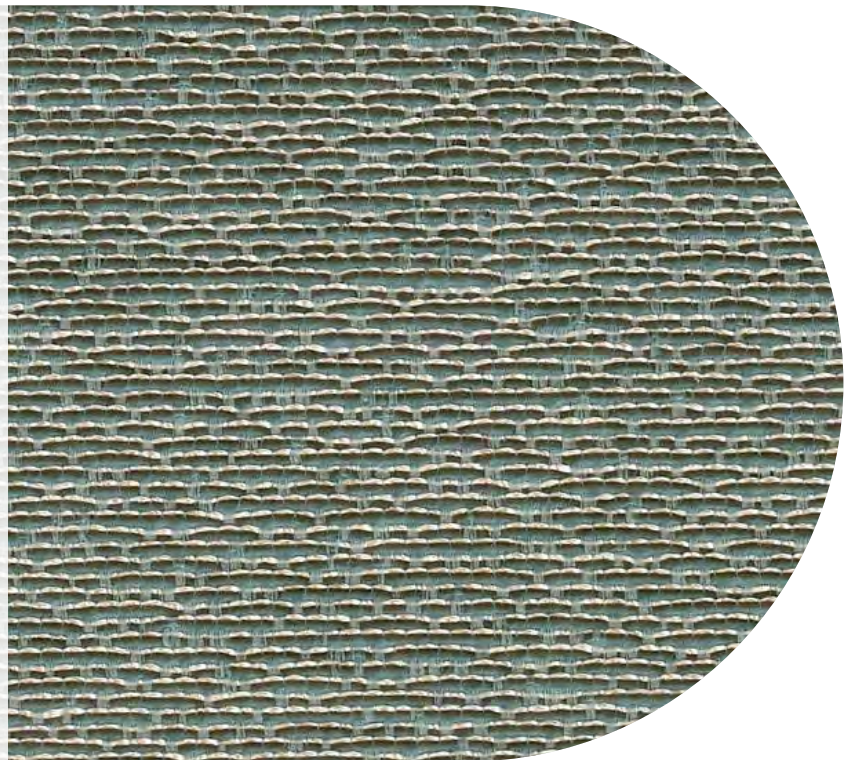
UK cigarette BS5852 source 0

**CARE**

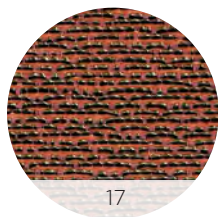


**NOTES**

Slight differences in colour may occur



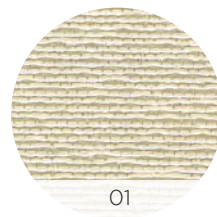
18



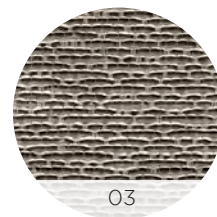
17



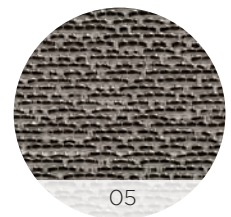
06



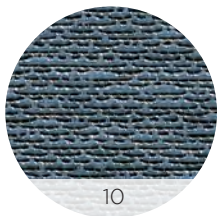
01



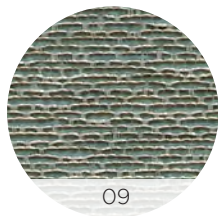
03



05



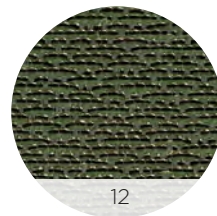
10



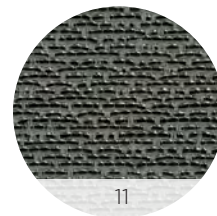
09



08



12



11

# BEAT | RUBELLI



**COMPOSITION**

100% polyester Trevira CS

**COLOUR FASTNESS**

**TO LIGHT**

Note 4-5 average

**MARTINDALE**

20.000 rubs

**EXTRA**

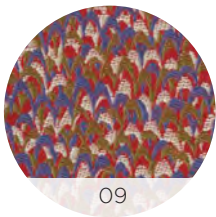
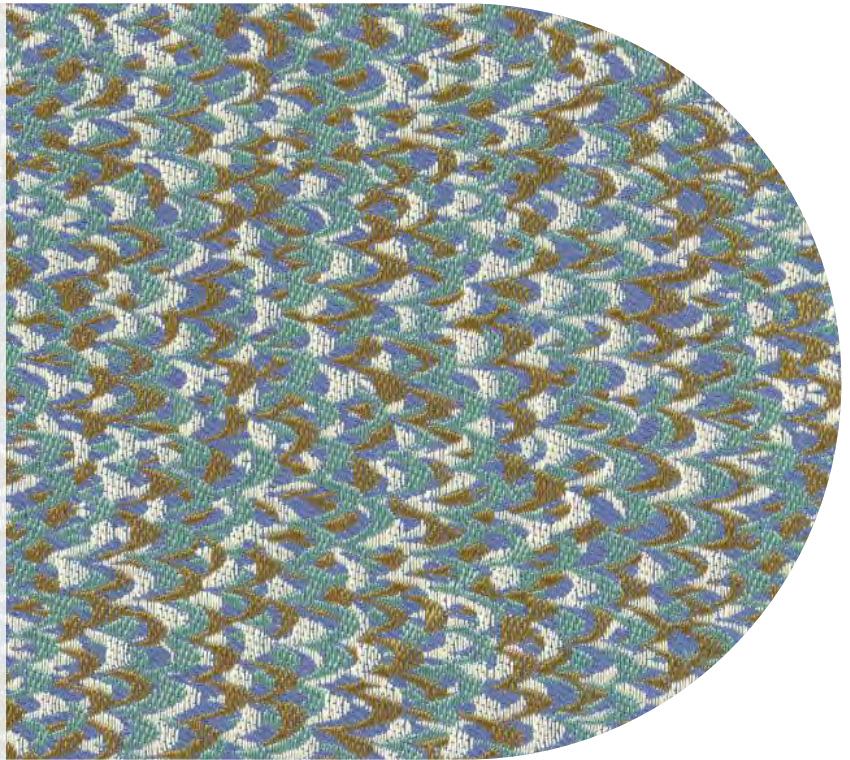
Germany B1 DIN 4102-1  
UK contract upholstery BS7176  
UK contract curtains BS5867  
Italia Classe 1 Tendaggi  
France M1  
NFP902-503-504-505  
IMO 8 upholstery

**CARE**



**NOTES**

Slight differences in colour may occur



09



10



03



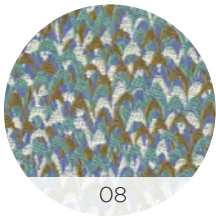
01



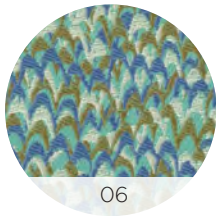
02



04



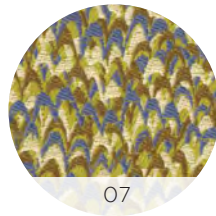
08



06



05



07

# SONG | RUBELLI



**COMPOSITION**

56% polyester  
44% polyamide

**COLOUR FASTNESS  
TO LIGHT**

Note 4-5 average

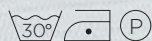
**MARTINDALE**

45.000 rubs

**FIRETEST**

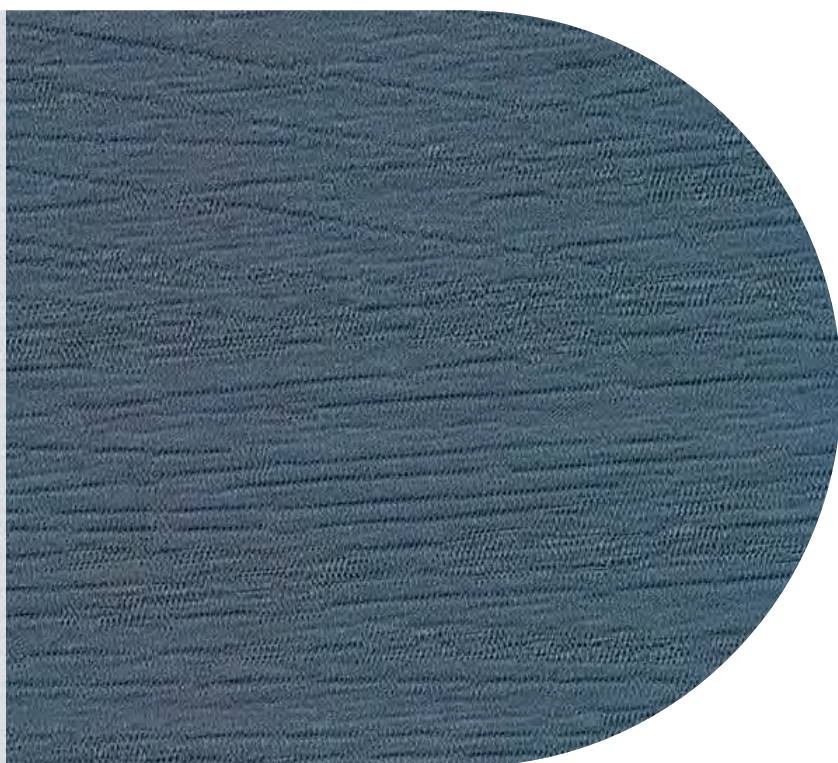
UK cigarette BS5852 source 0

**CARE**



**NOTES**

Slight differences in colour may occur



**bolzan**