

Tacchini Dress Code
Textile and Leather Collection

Dress

Code

Tacchini Dress Code	Textile	Cat. Special
02 Textile and Leather Collection	Cat. B	59 Early 60 Schimmia 63 Sedum 65 Silene 67 Sorbus 69 Steila 71 Stewartia
	Cat. C	Cat. Top 73 Thesium 75 Tibouchina 77 Trifolium
	Cat. D	Leather Cat. Pelle /Leather 79 Pelle /Leather Cat. Pelle Super /Super Leather 81 Divina 83 Pelle Super /Super Leather 85 Ricinus 87 Thuya Cat. Pelle Anilina /Aniline Leather
	Cat. Extra	31 Elegia 33 Equisetum 35 Erika 37 Euclidium 39 Euonymus 41 Evonimo
	Cat. Lusso	43 Lars 45 Lemon 47 Ligustrum 49 Lippia 51 Liquidambar 53 Loren 55 Lorna 57 Lunaria
	43 Ignifugo Fire retardant	89 Fiore
	45 Waterproof	91 Pelle Anilina /Aniline Leather
	47 Navale Nautical	
	49 Antistatico Antistatic	
	51 Anallergico Hypoallergenic	
	53 Antimacchia Stain resistant	
	55 Resistente ai Raggi UV UV resistant	
	57 Antibatterico Antibacterial	
	Senza ftalati Phtalates free	
	Acustico Acoustic	

Dress Code

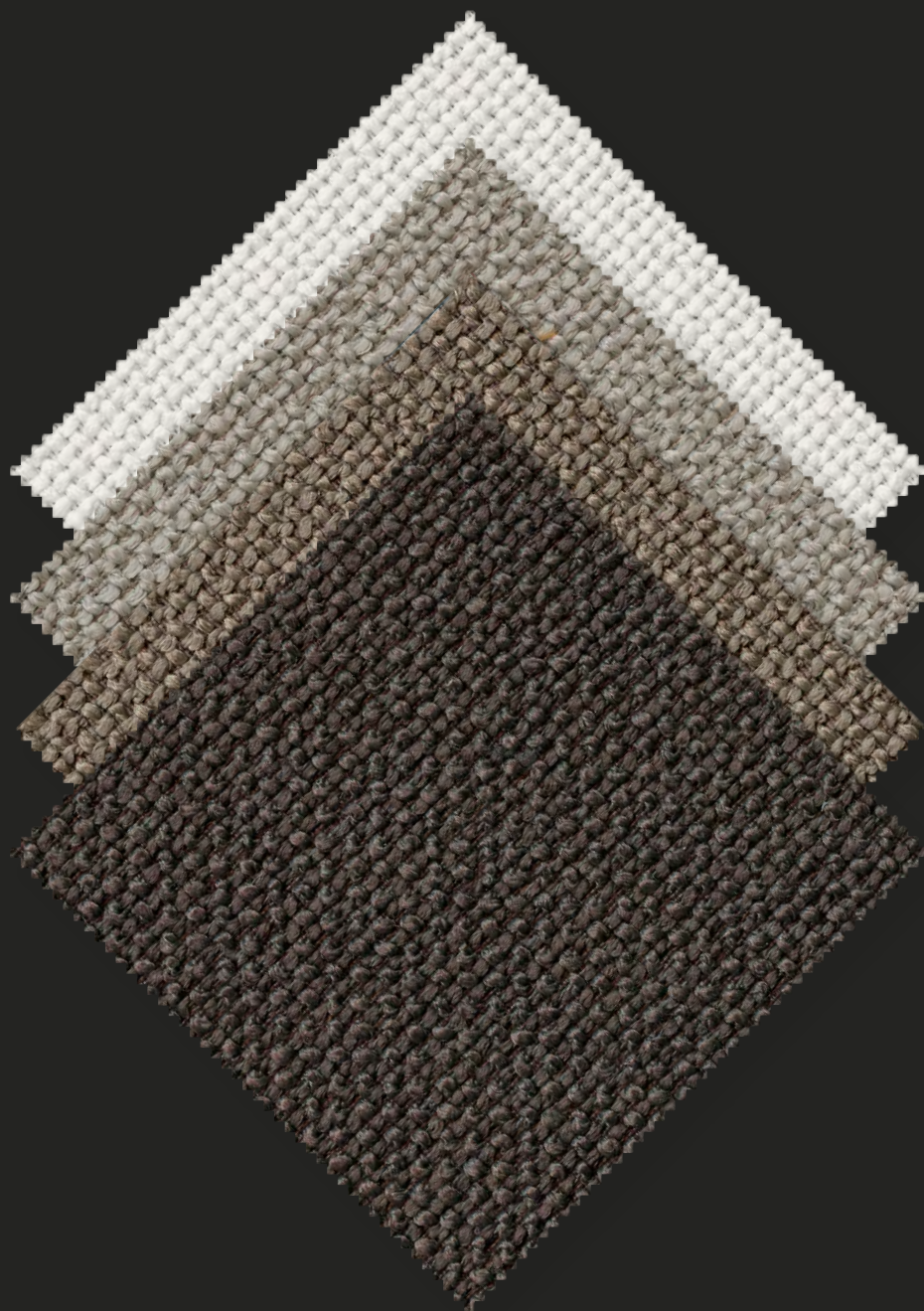
Nato da un lavoro creativo e stilistico che non si sovrappone al design dei prodotti Tacchini, ma lo veste di ulteriori significati e valori, questo campionario rappresenta un progetto nel progetto, un dizionario di tessuti e pelli, colori e sensazioni per interpretare gli spazi, le situazioni d'uso ed i gusti più diversi. Una proposta che nasce dall'esplorazione di tante culture e linguaggi estetici, dalla tradizione tessile e conciaria, alla ricerca di materiali innovativi, garantendo sempre i massimi livelli di eccellenza qualitativa e di responsabilità ambientale.

(Eng) This fabric collection has emerged from a creative and stylish work, which does not overlie the design of Tacchini's products, but gives new relevance and values. It represents a project inside the project, a dictionary of fabrics and leathers, colors and sensations to interpret the spaces, different situations and the most various tastes. A proposal that comes from the exploration of different cultures and aesthetic languages, from the textile and tanning tradition to the research of innovating materials. High levels of qualitative excellence and environmental responsibility are always guaranteed.

(Deu) Diese Musterkollektion entsteht einer kreativen und stilistischer Arbeit, die das Design der Produkten von Tacchini nicht überläppt. Sie gibt neue Bedeutungen und Werten und bildet ein Projekt im Projekt, ein Wörterbuch von Geweben und Ledern, Farben und Gefühle, um zahlreiche Räume, Situationen und Geschmäcke darzustellen. Ein Vorschlag, das aus der Erforschung von verschiedenen Kulturen, ästhetischen Sprache, Textiltradition und aus der Suche nach innovativen Materialien kommt. Die höchste Niveaus von Exzellenz und Umweltsverantwortun sind garantiert.

(Fra) Cet échantillon a origine à partir d'un travail créatif et stylistique qui ne s'impose pas au design des produits Tacchini, mais lui donne autre sens et valeur. Il représente un projet dans le projet, un dictionnaire de tissus et cuirs, de couleurs et sensations pour interpréter les espaces, les situations et les goûts plus différents. Une proposition mise au jour par l'exploration des plusieurs cultures et langages esthétiques, dès la tradition textile et de tannage à la recherche des nouveaux matériels. Les plus hauts niveaux d'excellence qualitative et de responsabilité environnementale sont garantis.

Article: Bakul



Category: ↳ B



Composizione: 77% Pl, 17% Co, 6% Pc

Test

- Solidità alla luce: colori chiari 3/4, colori medi e scuri 4/5, UNI EN ISO 105-B02
- Pilling: 4/5-5.000 cicli, ISO 12945-2

Martindale: 50.000 cicli, UNI EN ISO 12497-2

Lavaggio: lavaggio a secco

Applicazioni: rivestimento per imbottito contract

Colore: possono riscontrarsi lievi differenze

Composition: 77% Pl, 17% Co, 6% Pc

Test

- Lightfastness: light colours 3/4, medium and dark colours 4/5, UNI EN ISO 105-B02
- Pilling: 4/5-5.000 cycles, ISO 12945-2

Martindale: 50.000 cycles, UNI EN ISO 12497-2

Washing: dry cleaning

Application: contract upholstered furniture

Colour: little difference may occur

Category: L B

Article: Bopha





Composizione: 100% PI

Test

- Solidità alla luce: 4, UNI EN ISO 105-B02
- Pilling: 4/5 – 5.000 giri, EN ISO 12945-2
- Idrorepellente

Martindale: 40.000 cicli, UNI EN ISO 12497-2

Lavaggio: lavaggio a secco

Applicazioni: rivestimento per imbottito contract e home

Colore: possono riscontrarsi lievi differenze

Composition: 100% PI

Test

- Lightfastness: 4, UNI EN ISO 105-B02
- Pilling: 4/5 – 5.000 cycles, EN ISO 12945-2
- Water repellent

Martindale: 40.000 cycles, UNI EN ISO 12497-2

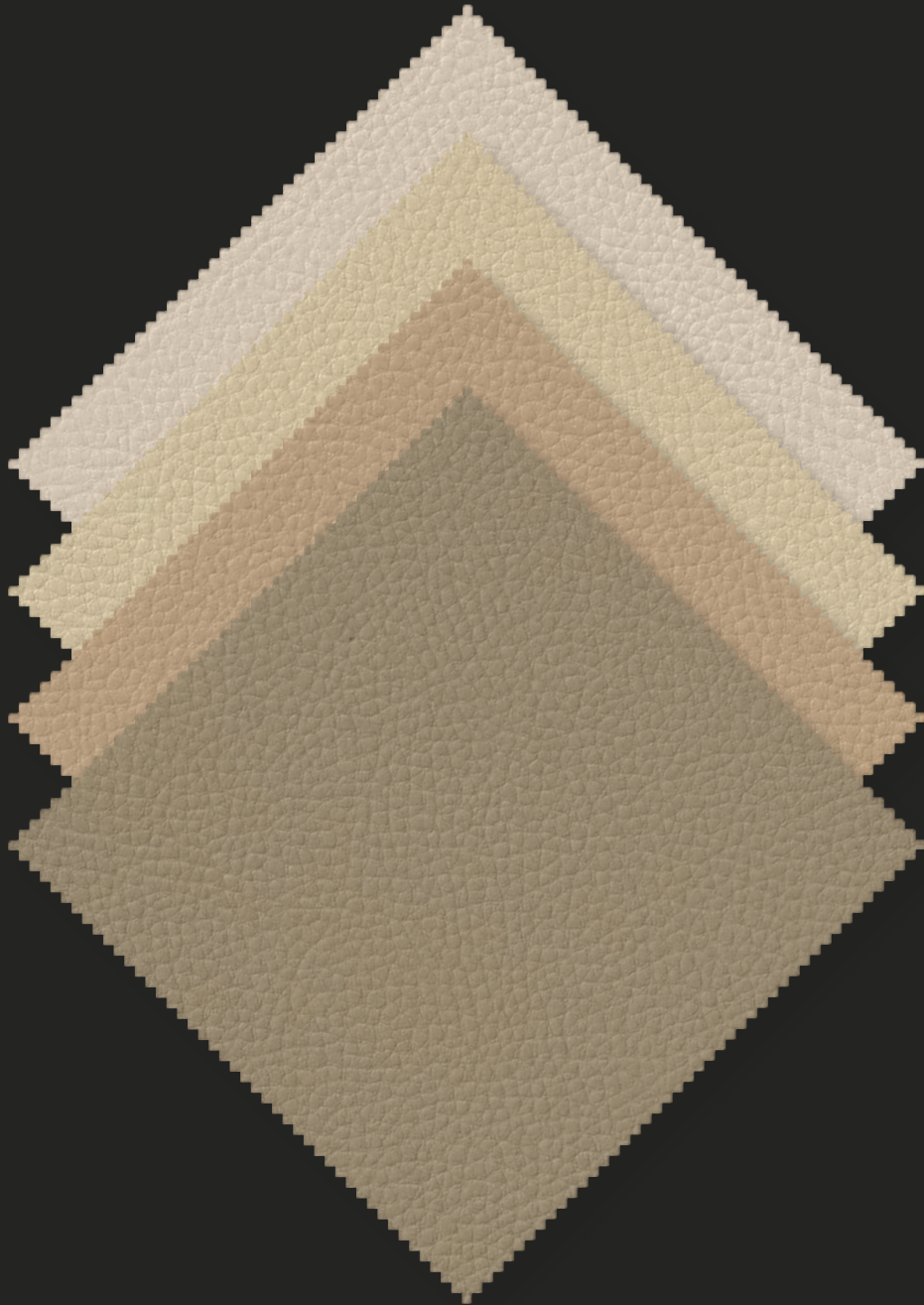
Washing: dry cleaning

Application: contract and home upholstered furniture

Colour: little difference may occur

Category: L B

Article: Briar





Composizione: 88% Pvc, 6% Pl, 6% Co

Test

- Solidità alla luce: 7, UNI ISO 4582/4892
- Resistenza alla fiamma: UNI 9175 classe 1IM, EN 1021:2014 part 1, EN 1021:2014 part 2, BS 5852 IS 0, BS 5852 IS 1
- Navale: FTP Code 307(88):10 Annex 1 part 8, ex IMO res. A652 (16)

Martindale: 100.000 cicli, UNI EN ISO 5470-2

Lavaggio: spolverare delicatamente e in caso di macchie lievi passare la superficie con un panno umido risciacquando con acqua, senza strizzare

Applicazioni: rivestimento per imbottito contract

Colore: possono riscontrarsi lievi differenze

Composition: 88% Pvc, 6% Pl, 6% Co

Test

- Lightfastness: 7, UNI ISO 4582/4892
- Flammability: UNI 9175 classe 1IM, EN 1021:2014 part 1, EN 1021:2014 part 2, BS 5852 IS 0, BS 5852 IS 1
- Nautical: FTP Code 307(88):10 Annex 1 part 8, ex IMO res. A652 (16)

Martindale: 100.000 cycles, UNI EN ISO 12497-2

Washing: dust gently and in case of light stains pass the surface with a damp cloth rinse with water without squeezing

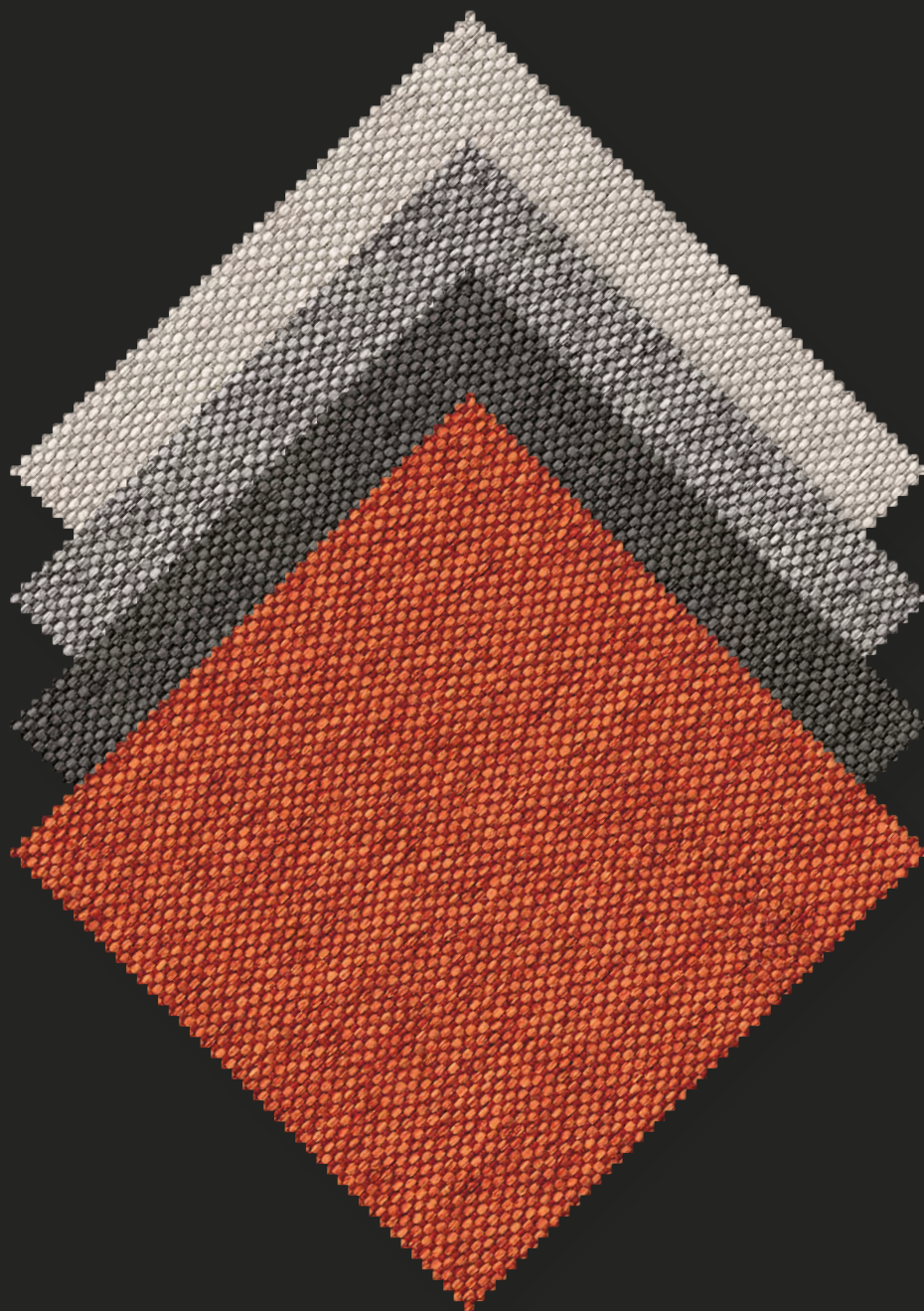
Application: contract upholstered furniture

Colour: little difference may occur

Category: L B



Article: Bryony





Composizione: 100% PI

Test

- Solidità alla luce: 5, UNI EN ISO 105-B02
- Resistenza alla fiamma: BS5852 source 0
- Pilling: 4, EN ISO 12945-2
- Idrorepellente

Martindale: 100.000 cicli, UNI EN ISO 12497-2

Lavaggio: lavaggio a secco

Applicazioni: rivestimento per imbottito contract

Colore: possono riscontrarsi lievi differenze

Composition: 100% PI

Test

- Lightfastness: 5, UNI EN ISO 105-B02
- Flammability: BS5852 source 0
- Pilling: 4, EN ISO 12945-2
- Water repellent

Martindale: 100.000 cycles, UNI EN ISO 12497-2

Washing: dry cleaning

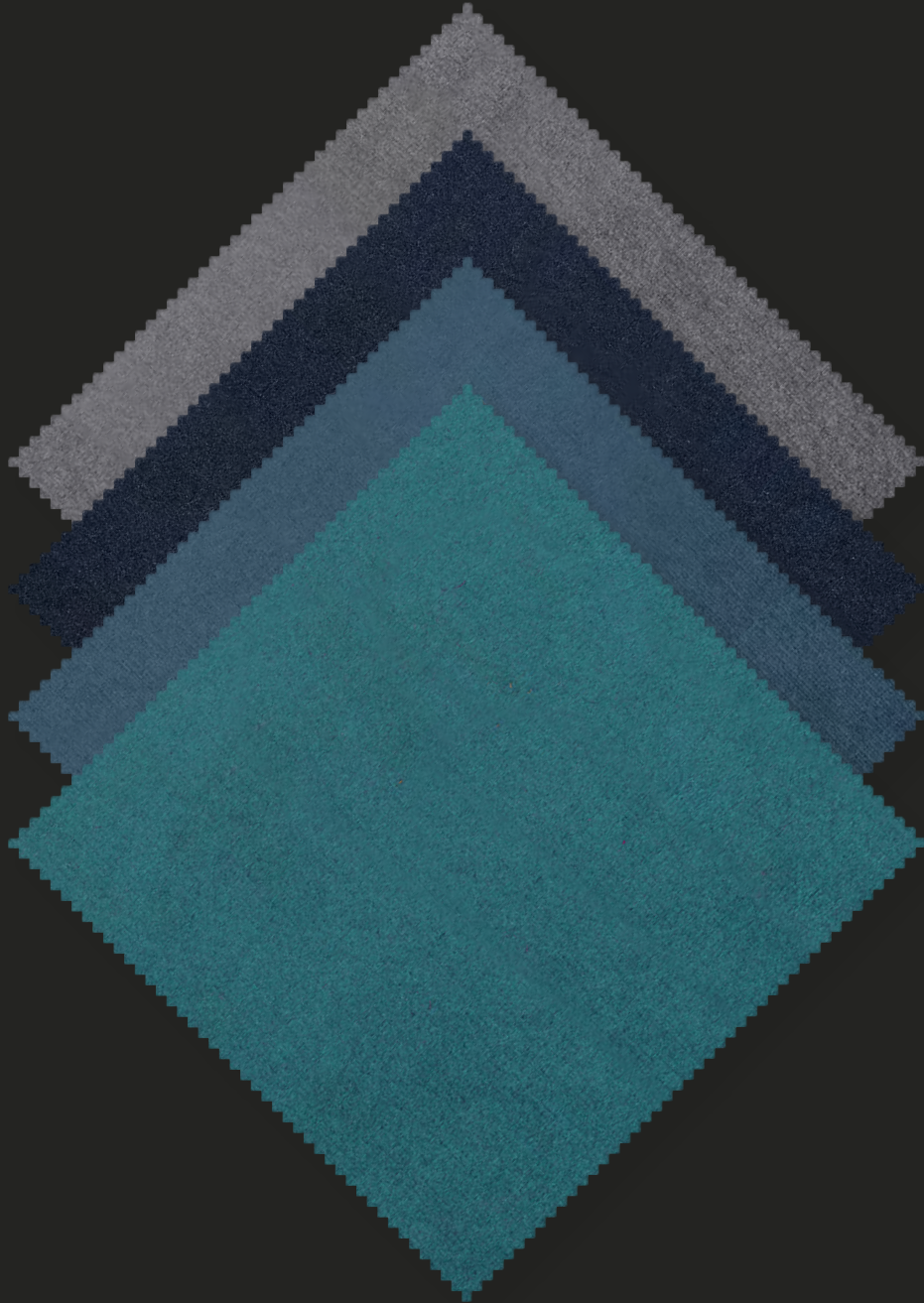
Application: contract upholstered furniture

Colour: little difference may occur

Category: L B



Article: Calantha





Composizione: 100% PI

Test

- Solidità alla luce: 5, UNI EN ISO 105-B02
- Resistenza alla fiamma: DIN EN 1021-1, BS5852 Source 0
- Pilling 5 - 2.000 giri, EN ISO 12945-2
- Idrorepellente

Martindale: 100.000 cicli, UNI EN ISO 12497-2

Lavaggio: lavaggio a secco

Applicazioni: rivestimento per imbottito contract

Colore: possono riscontrarsi lievi differenze

Composition: 100% PI

Test

- Lightfastness: 5, UNI EN ISO 105-B02
- Flammability: DIN EN 1021-1, BS5852 Source 0
- Pilling: 5 - 2.000 cycles, EN ISO 12945-2
- Water repellent

Martindale: 100.000 cycles, UNI EN ISO 12497-2

Washing: dry cleaning

Application: contract upholstered furniture

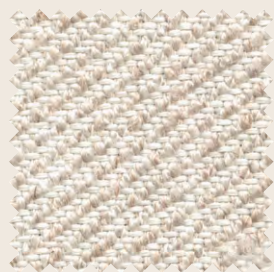
Colour: little difference may occur

Category: L C

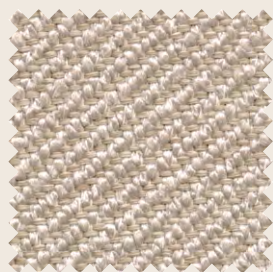


Article: Calendula

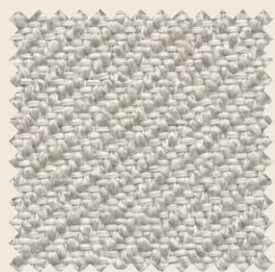




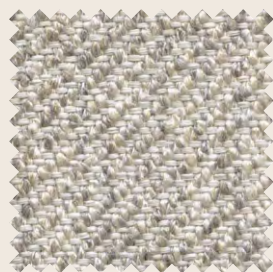
01



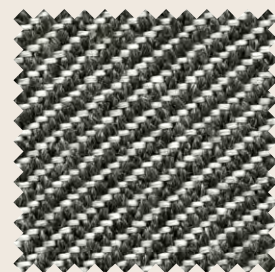
02



03



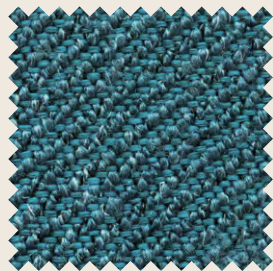
04



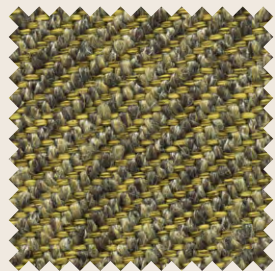
05



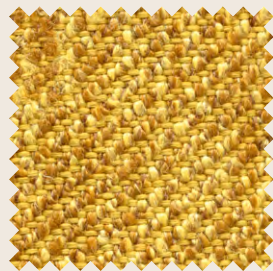
06



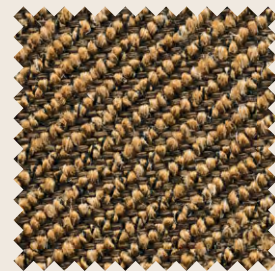
07



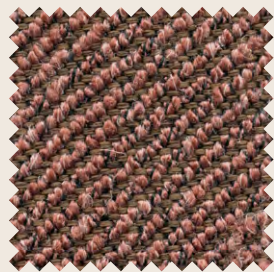
08



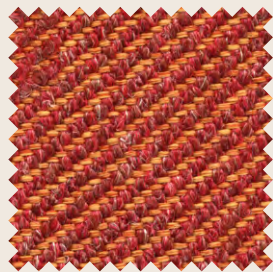
09



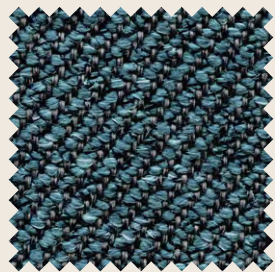
10



11



12



13

Composizione: 37% Pl, 36% Pc, 12% Co, 10% Ju, 5% Vi

Test

- Solidità alla luce: 5, UNI EN ISO 105-B02
- Pilling: 4, EN ISO 12945-2

Martindale: 40.000 cicli, UNI EN ISO 12497-2

Lavaggio: lavaggio a secco

Applicazioni: rivestimento per imbottito contract

Colore: possono riscontrarsi lievi differenze

Composition: 37% Pl, 36% Pc, 12% Co, 10% Ju, 5% Vi

Test

- Lightfastness: 5, UNI EN ISO 105-B02
- Pilling: 4, EN ISO 12945-2

Martindale: 40.000 cycles, UNI EN ISO 12497-2

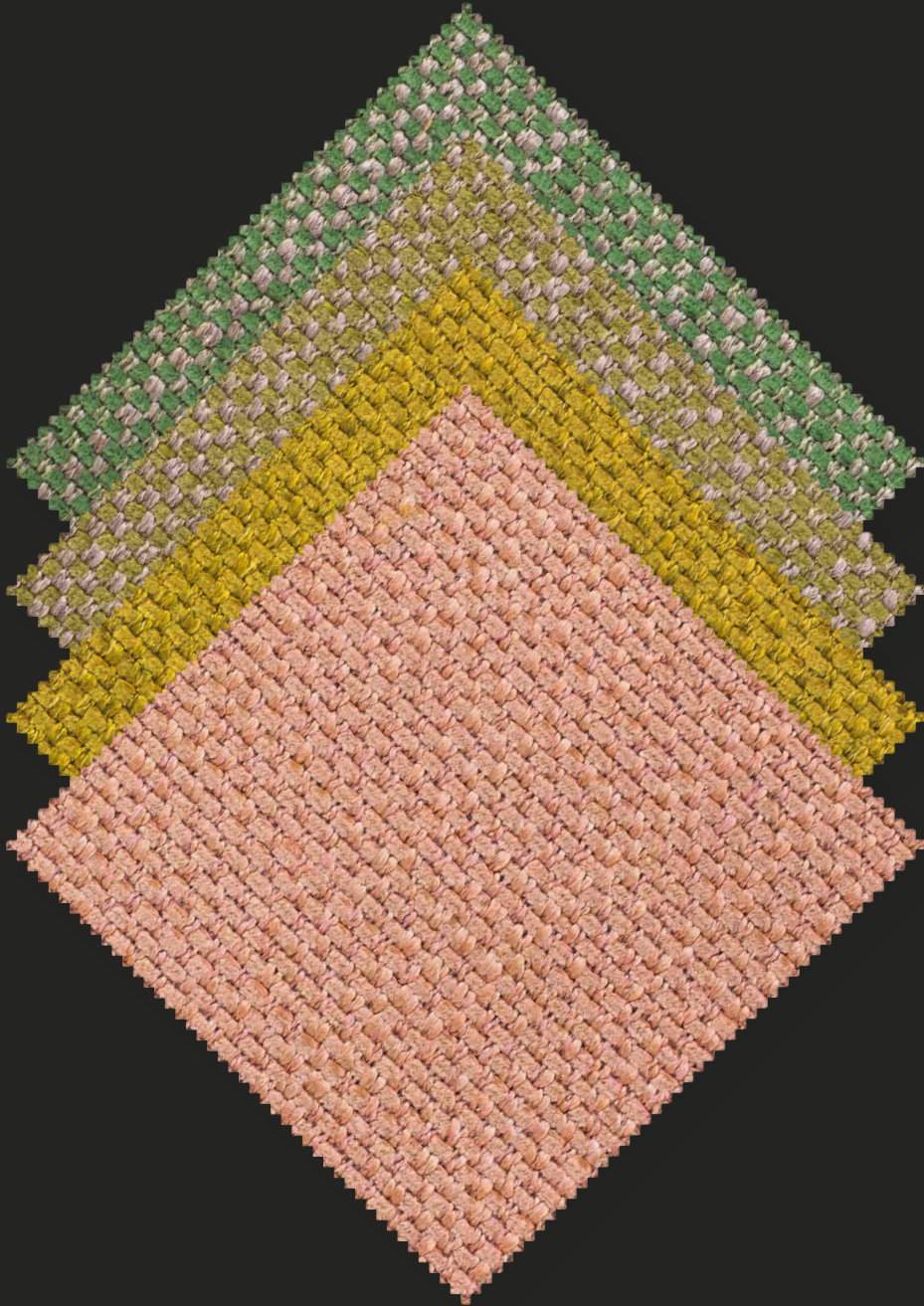
Washing: dry cleaning

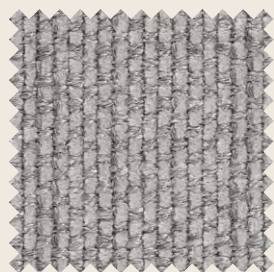
Application: contract upholstered furniture

Colour: little difference may occur

Category: L C

Article: Ciclamino





01



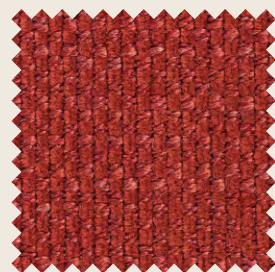
02



03



04



05



06



07



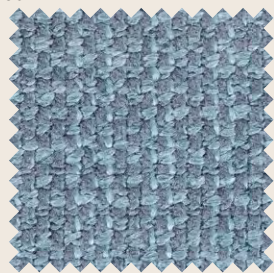
08



09



10



11

Composizione: 3% Vi, 49% Pc, 48% PI

Test

- Solidità alla luce: 4/5, UNI EN ISO 105 - B02
- Resistenza alla fiamma: Cigarette test BS5852:1979, Part 0, En 1021-1, NFPA 260, Cal TB 117
- Pilling: 4/5, UNI EN ISO 12945-2:2002

Martindale: 27.000 cicli, UNI EN ISO 12497-2

Lavaggio: lavaggio a secco

Applicazioni: rivestimento per imbottito contract e home

Colore: possono riscontrarsi lievi differenze

Antimacchia

- Istruzioni di pulizia

Macchie liquide e unto devono essere tamponate subito con carta assorbente da cucina. Mettere dell'acqua sulla macchia e senza sfregare rimuoverla con carta assorbente. Macchie di caffè, tè, cioccolato, pomodoro, vino rosso, rossetto o gel devono essere rimosse con un panno umido e sapone neutro. Sfregare delicatamente e infine rimuovere l'acqua e il sapone con aspirapolvere. Non usare candeggina. Non strizzare o schiacciare il tessuto. Seguendo le istruzioni qui sopra riportate, il tessuto rimarrà inalterato.

Composition: 3% Vi, 49% Pc, 48% PI

Test

- Lightfastness: 4/5, UNI EN ISO 105-B02
- Flammability: Cigarette test BS5852:1979, Part 0, En 1021-1, NFPA 260, Cal TB 117
- Pilling: 4/5, UNI EN ISO 12945-2:2002

Martindale: 27.000 cycles, UNI EN ISO 12497-2

Washing: dry cleaning

Application: contract and home upholstered furniture

Colour: little difference may occur

Easy care

- Cleaning instructions

Liquid and oily stains must be dried with paper towel. Put some water on the stain and without rub keep away with absorbent paper. Coffee, tea, chocolate, tomato, red wine, lipstick or grease must be cleaned with water and mild neutral soap. Rub gently and keep away the water and the soap with the vacuum cleaner. Do not bleach. Do not wring or squeeze. Following these details the fabric will remain perfect.

Category: L C



Article: Daiki





Composizione: 65% Pu, 29% Pl, 6% Co

Test

- Solidità alla luce 6/7, UNI EN ISO 105-B02
- Resistenza alla fiamma: UNI 9175 classe 1IM, EN 1021:2014 part 1, EN 1021:2014 part 2, BS 5852 IS 0, BS 5852 IS 1, California TB 117:2013
- Navale: FTP Code 307(88):10 Annex 1 part 8

Martindale: 100.000 cicli, UNI EN ISO 12497-2

Lavaggio: spolverare delicatamente e in caso di macchie lievi passare la superficie con un panno umido risciacquando con acqua, senza strizzare

Applicazioni: rivestimento per imbottito contract

Colore: possono riscontrarsi lievi differenze

Composition: 65% Pu, 29% Pl, 6% Co

Test

- Lightfastness 6/7, UNI EN ISO 105-B02
- Flammability: UNI 9175 classe 1IM, EN 1021:2014 part 1, EN 1021:2014 part 2, BS 5852 IS 0, BS 5852 IS 1, California TB 117:2013
- Nautical: FTP Code 307(88):10 Annex 1 part 8

Martindale: 100.000 cycles, UNI EN ISO 12497-2

Washing: dust gently and in case of light stains pass the surface with a damp cloth rinse with water without squeezing

Application: contract upholstered furniture

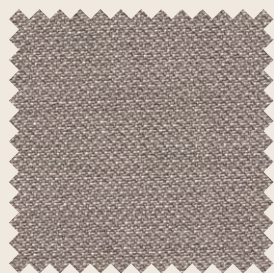
Colour: little difference may occur

Category: L D

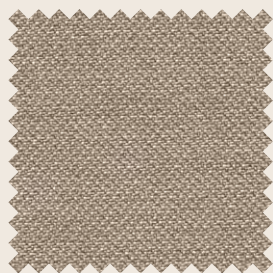


Article: Daylily





01



02



03



04



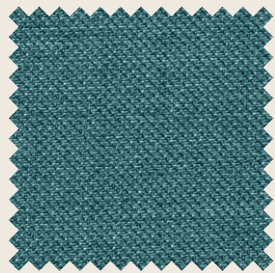
05



06



07



08



09



10



11

Composizione: 100% Pes

Test

- Solidità alla luce: 6/7, UNI EN ISO 105-B02
- Resistenza alla fiamma: EN 1021-2, UNI 9175 class 1IM
- Pilling: 5, UNI EN ISO 12945-2
- Resistenza ai raggi UV

Martindale: 60.000 cicli, UNI EN ISO 12947-2

Lavaggio: lavaggio a secco

Applicazioni: rivestimento per imbottito contract

Colore: possono riscontrarsi lievi differenze

Composition: 100% Pes

Test

- Lightfastness: 6/7, UNI EN ISO 105-B02
- Flammability: EN 1021-2, UNI 9175 class 1IM
- Pilling: 5, UNI EN ISO 12945-2
- Resistance to UV rays

Martindale: 60.000 cycles, UNI EN ISO 12947-2

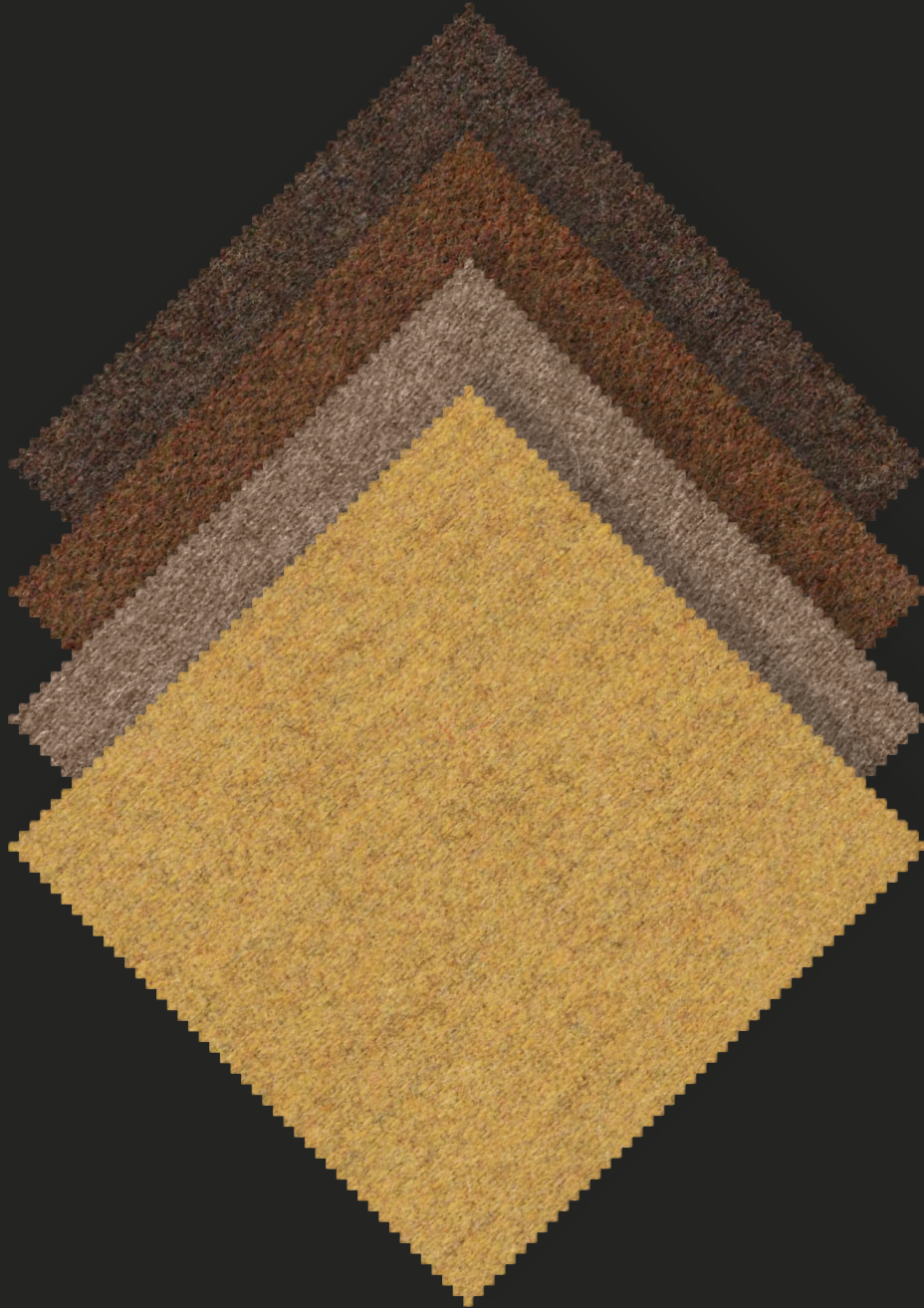
Washing: dry cleaning

Application: contract upholstered furniture

Colour: little difference may occur

Category: L D





Article: Delphinium



Composizione: 70% Wo, 20% Pl, 5% Pa, 5% Pc

Test

- Solidità alla luce: 5, UNI EN ISO 105-B02
- Resistenza alla fiamma: cigarette test (EN 1021/1), match test (EN 1021/2)
- Navale: Imo test (A.652/16)
- Pilling: 4, EN ISO 12945-2

Martindale: 60.000 cicli, UNI EN ISO 12497-2

Lavaggio: lavaggio a secco

Applicazioni: rivestimento per imbottito contract e home

Colore: possono riscontrarsi lievi differenze

Composition: 70% Wo, 20% Pl, 5% Pa, 5% Pc

Test

- Lightfastness: 5, UNI EN ISO 105-B02
- Flammability: cigarette test (EN 1021/1), match test (EN 1021/2)
- Naval: Imo test (A.652/16)
- Pilling: 4, EN ISO 12945-2

Martindale: 60.000 cycles, UNI EN ISO 12497-2

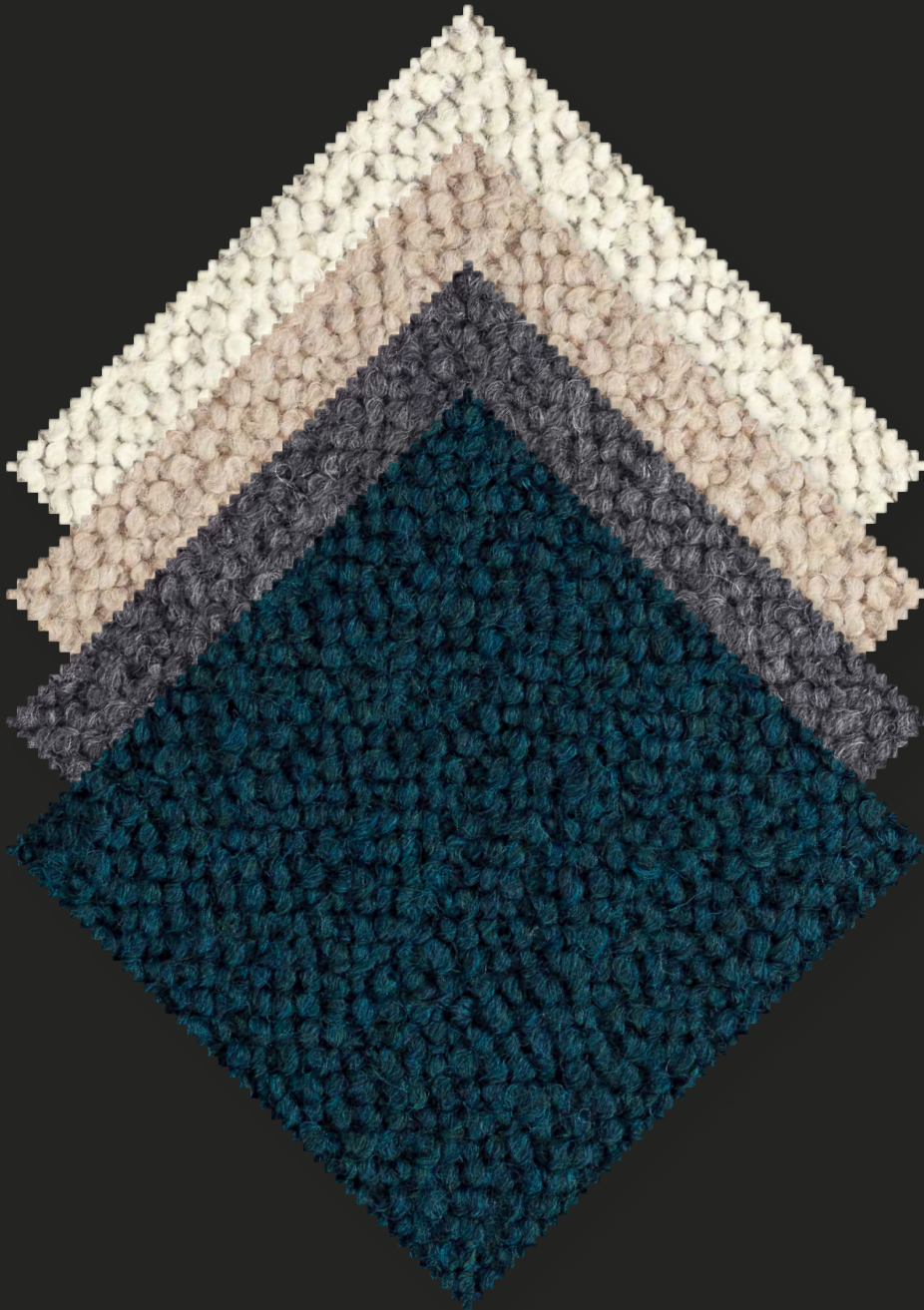
Washing: dry cleaning

Application: contract and home upholstered furniture

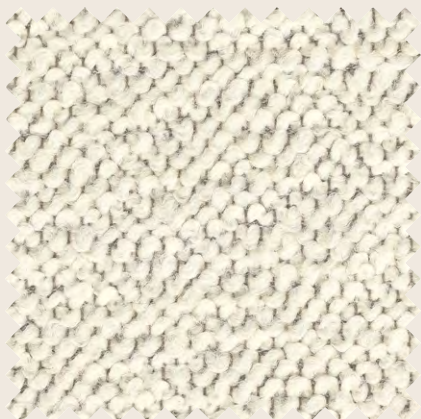
Colour: little difference may occur

Category: L D





Article: Descampsia



01



02



03



04



05

Composizione: 35% Wo, 35% Pc, 23% Pl, 7% Co

Test

- Solidità alla luce: colori chiari 3/4, colori medi e scuri 4/5, UNI EN ISO 105-B02
- Pilling 3/4 – 5.000 giri, ISO 12945-2

Martindale: 20.000 cicli, UNI EN ISO 12497-2

Lavaggio: lavaggio a secco

Applicazioni: rivestimento per imbottito contract e home

Colore: possono riscontrarsi lievi differenze

Composition: 35% Wo, 35% Pc, 23% Pl, 7% Co

Test

- Lightfastness: light colours 3/4, medium and dark colours 4/5, UNI EN ISO 105-B02
- Pilling: 3/4 – 5.000 turns , ISO 12945-2

Martindale: 20.000 cycles, UNI EN ISO 12497-2

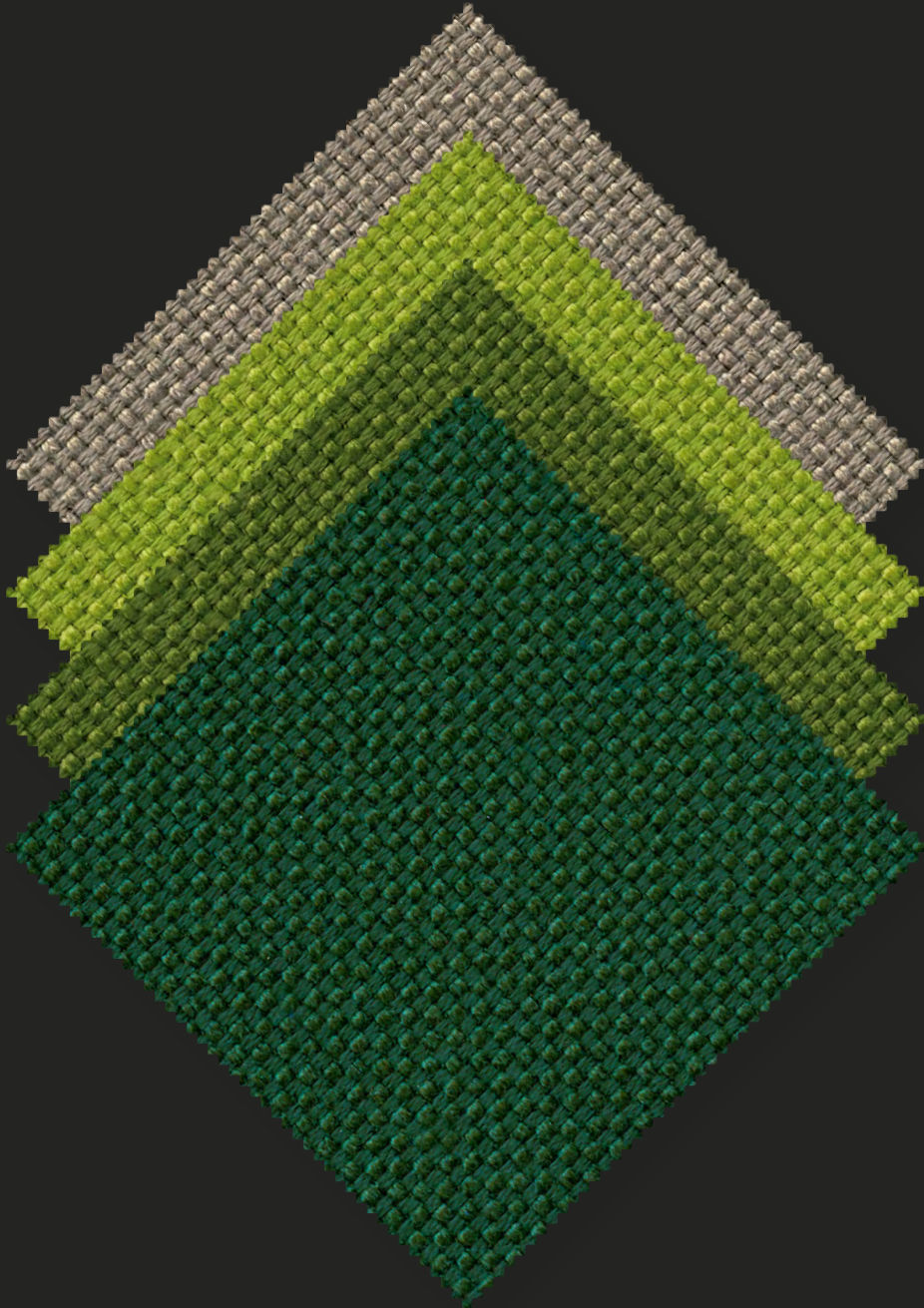
Washing: dry cleaning

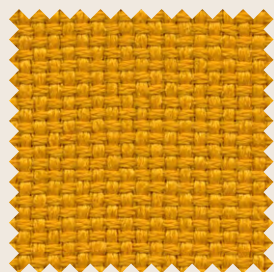
Application: contract and home upholstered furniture

Colour: little difference may occur

Category: L D

Article: Dianella





01



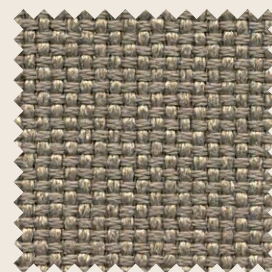
02



03



04



05



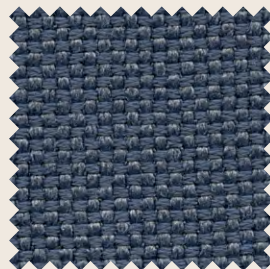
06



07



08



09



10



11

Composizione: 100% PI Trevira cs

Test

- Solidità alla luce: 6, UNI EN ISO 105-B02
- Resistenza alla fiamma: C1, CRIB 5, M1, B1, EN 1021/1-2, BS 7176 MH, NF D 60013 (AM18)
- Navale: IMO A 652 (16)
- Pilling: 5-2.000 giri, UNI EN ISO 12945-2
- Oeko Tex

Martindale: 150.000 cicli, UNI EN ISO 12947-2

Lavaggio: lavaggio a secco

Applicazioni: rivestimento per imbottito contract

Colore: possono riscontrarsi lievi differenze

Composition: 100% PI Trevira cs

Test

- Lightfastness: 6, UNI EN ISO 105-B02
- Flammability: C1, CRIB 5, M1, B1, EN 1021/1-2, BS 7176 MH, NF D 60013 (AM18)
- Nautical: IMO A 652 (16)
- Pilling: 5-2.000 turns, UNI EN ISO 12945-2
- Oeko Tex

Martindale: 150.000 cycles, UNI EN ISO 12947-2

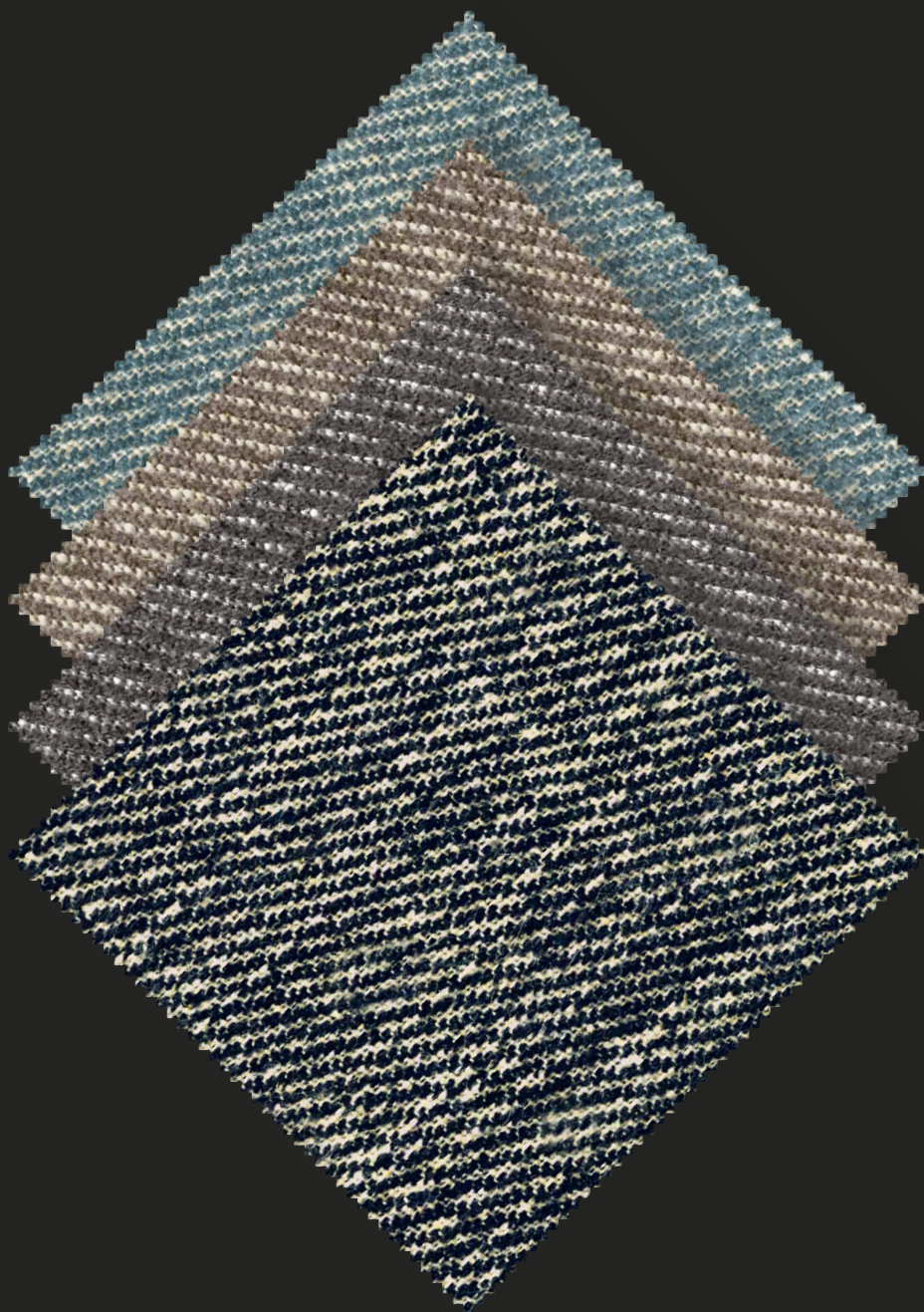
Washing: dry cleaning

Application: contract upholstered furniture

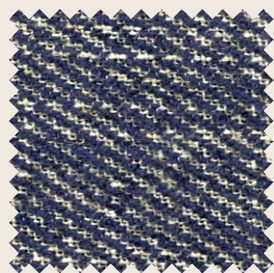
Colour: little difference may occur

Category: L D

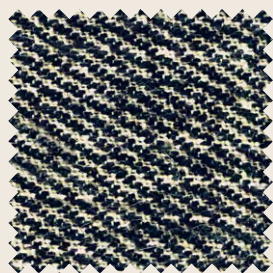




Article: Dicentra



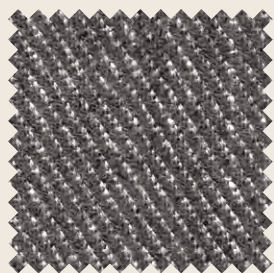
01



02



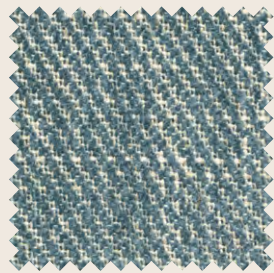
03



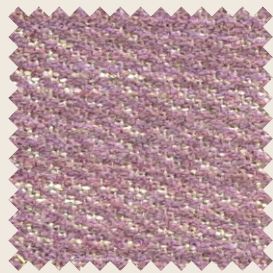
04



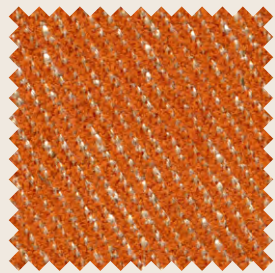
05



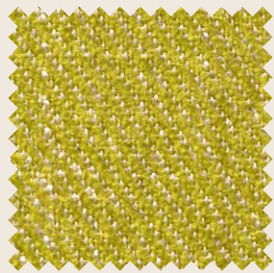
06



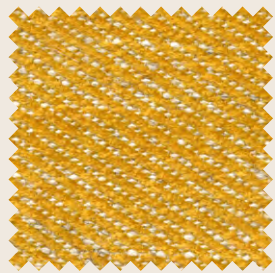
07



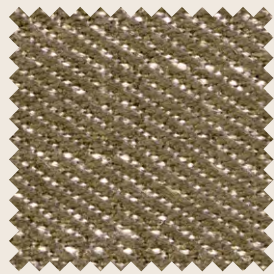
08



09



10



11

Composizione: 67% Vi, 17% Co, 16% Li

Test

- Solidità alla luce: colori chiari 3/4, colori medi e scuri 5, EN ISO 105-B02
- Pilling: 4-5.000 giri, ISO 12945-2

Martindale: 30.000 cicli, UNI EN ISO 12947-2

Lavaggio: lavaggio a secco

Applicazioni: rivestimento per imbottito contract

Colore: possono riscontrarsi lievi differenze

Composition: 67% Vi, 17% Co, 16% Li

Test

- Lightfastness: light colours 3/4, medium dark colours 5, EN ISO 105-B02
- Pilling: 4-5.000 turns, ISO 12945-2

Martindale: 30.000 cycles, UNI EN ISO 12947-2

Washing: dry cleaning

Application: contract upholstered furniture

Colour: little difference may occur

Category: L D

Article: Dicondra





01



02



03



04



05



06



07



08



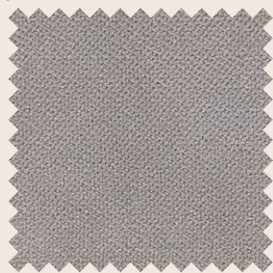
09



10



11



12



13

Composizione: 100% PI

Test

- Solidità alla luce: 5, UNI EN ISO 105-B02
- Resistenza alla fiamma: Cigarette test BS5852
- Pilling: 4/5, UNI EN ISO 12945-2:2002

Martindale: 80.000 cicli, UNI EN ISO 12497-2

Lavaggio: lavaggio a secco

Applicazioni: rivestimento per imbottito contract

Colore: possono riscontrarsi lievi differenze

Composition: 100% PI

Test

- Lightfastness: 5, UNI EN ISO 105-B02
- Flammability: Cigarette test BS5852
- Pilling: 4/5, UNI EN ISO 12945-2:2002

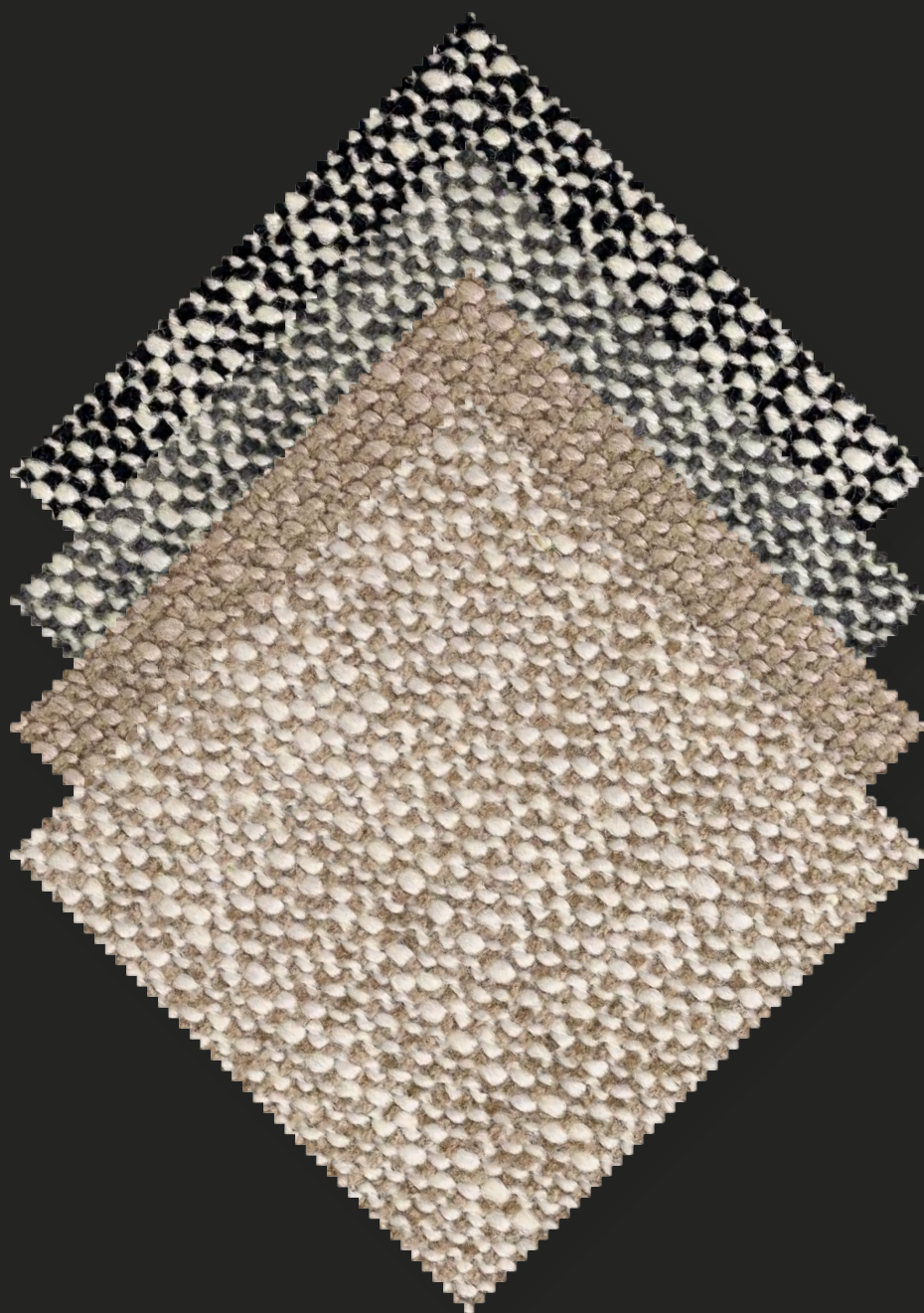
Martindale: 80.000 cycle, UNI EN ISO 12497-2

Washing: dry cleaning

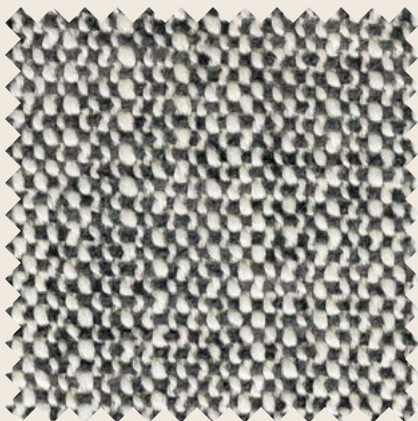
Application: contract upholstered furniture

Colour: little difference may occur

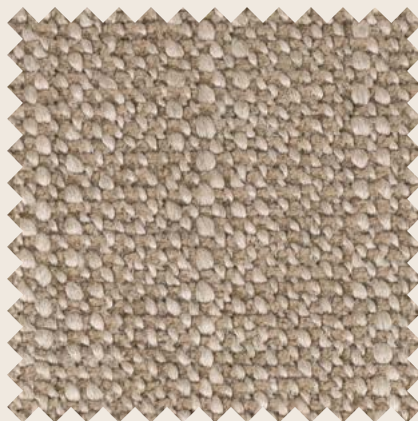
Category: L D



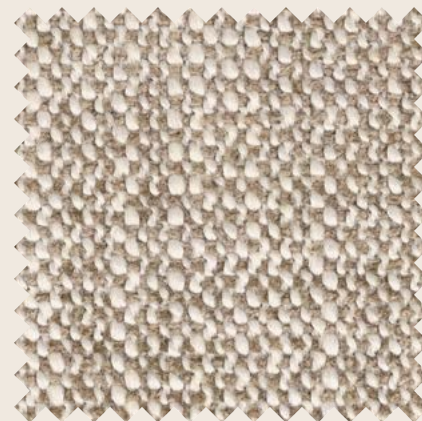
Article: Elegia



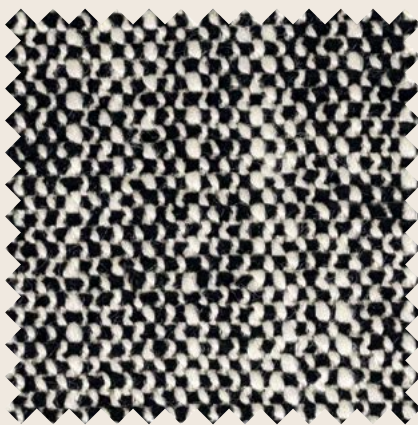
01



02



03



04

Composizione: 67% Pc, 14% Pl, 11% Co, 8% Wo

Test

- Solidità alla luce: 5, UNI EN ISO 105-B02
- Pilling: 4/5, UNI EN ISO 12945-2

Martindale: 90.000 cicli, UNI EN ISO 12497-2

Lavaggio: lavaggio a secco

Applicazioni: rivestimento per imbottito contract

Colore: possono riscontrarsi lievi differenze

Composition: 67% Pc, 14% Pl, 11% Co, 8% Wo

Test

- Lightfastness: 5, UNI EN ISO 105-B02
- Pilling: 4/5, UNI EN ISO 12945-2

Martindale: 90.000 cycles, UNI EN ISO 12497-2

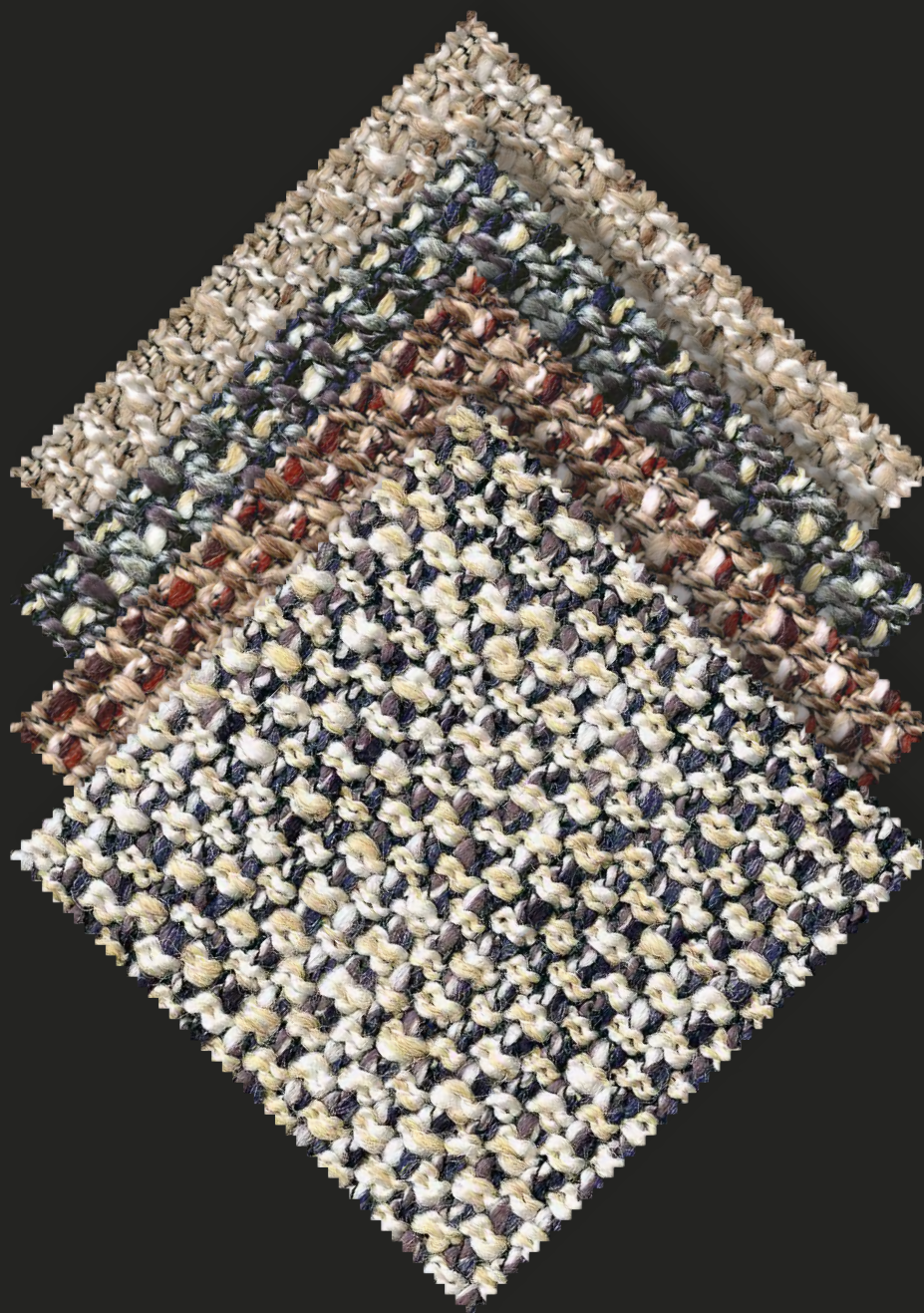
Washing: dry cleaning

Application: contract upholstered furniture

Colour: little difference may occur

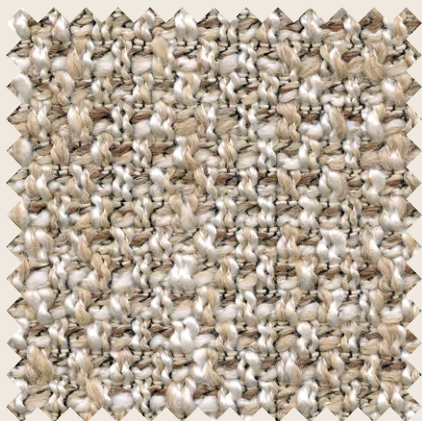
Category: ↳ Extra

Article: Equisetum

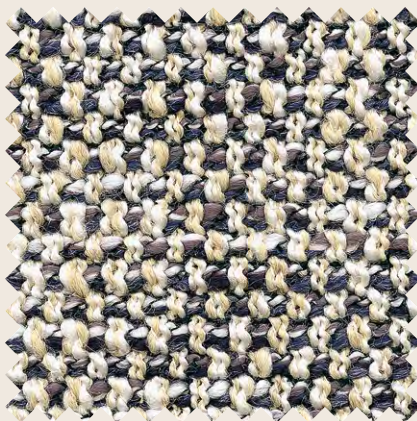


Category: ↳ Extra

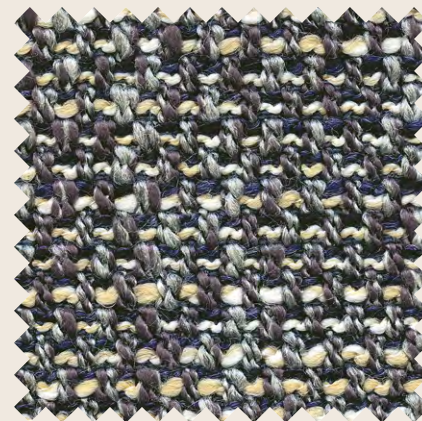
Article: Equisetum



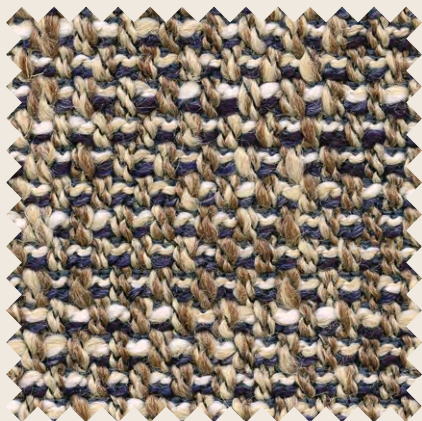
01



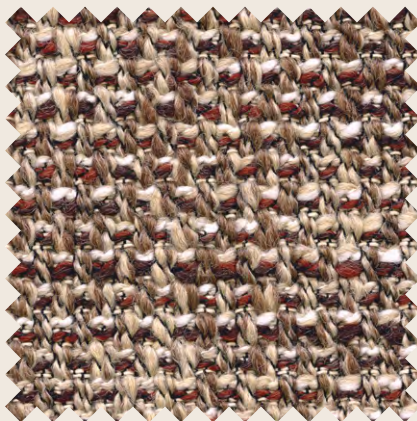
02



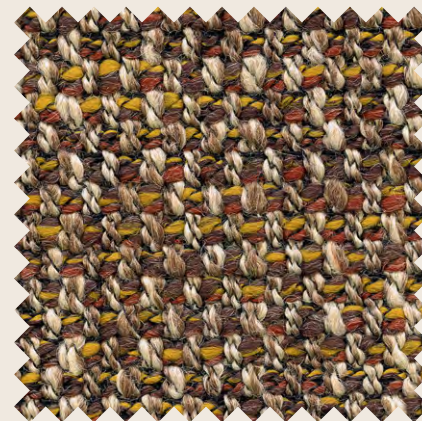
03



04



05



06

Composizione: 63% Pc, 15% Pl, 12% Wo, 10% Co

Test

- Solidità alla luce: 5, UNI EN ISO 105-B02
- Pilling: 4, EN ISO 12945-2

Martindale: 70.000 cicli, UNI EN ISO 12497-2

Lavaggio: lavaggio a secco

Applicazioni: rivestimento per imbottito contract/home

Colore: possono riscontrarsi lievi differenze

Composition: 63% Pc, 15% Pl, 12% Wo, 10% Co

Test

- Lightfastness: 5, UNI EN ISO 105-B02
- Pilling: 4, EN ISO 12945-2

Martindale: 70.000 cycles, UNI EN ISO 12497-2

Washing: dry cleaning

Application: contract and home upholstered furniture

Colour: little difference may occur

Category: ↳ Extra





Composizione: 63% Pu, 29% Co, 8% Pes

Test

- Resistenza alla luce: 5/6, UNI EN ISO 105-B02
- Resistenza alla fiamma: EN 1021-2, BS 5852 CRIB 5, BS 5852-1 PART 1, UNI 9175 classe 1IM, TB 117 sez. E p.1 (California)
- Navale: Imo Resolution A652(16):19889
- Waterproof

Ultra-Fresh, un antimicrobico che crea una barriera difensiva contro acari, batteri e funghi, evitando odori sgradevoli ed allergie

Senza Ftalati

Martindale: 150.000 cicli, UNI EN ISO 12947-2

Lavaggio: spolverare delicatamente e in caso di macchie lievi passare la superficie con un panno umido risciacquando con acqua, senza strizzare

Applicazioni: rivestimento per imbottito contract

Colore: possono riscontrarsi lievi differenze

Avvertenze generali: i colori chiari non devono essere messi a contatto con tessuti trattati con coloranti non fissati, onde evitare macchi ed aloni di coloranti di cui non possiamo garantire la pulitura.

Category: [↳ Extra](#)

Composition: 63% Pu, 29% Co, 8% Pes

Test

- Lightfastness: 5/6, UNI EN ISO 105-B02
- Flammability: EN 1021-2, BS 5852 CRIB 5, BS 5852-1 PART 1, UNI 9175 class 1IM, TB 117 sec. E p.1 (California)
- Nautical: Imo Resolution A652(16):19889
- Waterproof

Ultra-Fresh, an anti-microbial agent which creates a defensive barrier against mites, bacteria and fungus, avoiding smells and allergies

Phthalates free

Martindale: 150.000 cycles, UNI EN ISO 12947-2

Washing: dust gently and in case of light stains pass the surface with a damp cloth rinse with water without squeezing

Application: contract upholstered furniture

Colour: little difference may occur

General warnings: To avoid permanent stains, the lighter colours should not be brought into contact with textile coloured with unfixed dyes. We cannot guarantee the ability to remove unknown dyes from light coloured product.



Article: Euclidium





01



02



03



04



05



06



07



08



09

Composizione: 69% Vi, 23% Co, 8% PI

Test

- Solidità alla luce: 5, UNI EN ISO 105-B02
- Resistenza alla fiamma: BS5852 cigarette test
- Pilling: 4/5, EN ISO 12945-2

Martindale: 100.000 cicli, UNI EN ISO 12497-2

Lavaggio: lavaggio a secco

Applicazioni: rivestimento per imbottito contract

Colore: possono riscontrarsi lievi differenze

Composition: 69% Vi, 23% Co, 8% PI

Test

- Lightfastness: 5, UNI EN ISO 105-B02
- Flammability: BS5852 cigarette test
- Pilling: 4/5, EN ISO 12945-2

Martindale: 100.000 cycles, UNI EN ISO 12497-2

Washing: dry cleaning

Application: contract upholstered furniture

Colour: little difference may occur

Category: ↳ Extra







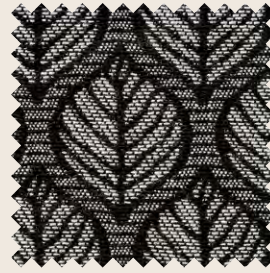
01



02



03



04



05



06



07



08

Composizione: 46% Co, 36% Pl, 18% Vi

Test

• Solidità alla luce: 4/5

Martindale: 30.000 cicli

Lavaggio: lavaggio a secco

Applicazioni: rivestimento per imbottito contract

Colore: possono riscontrarsi lievi differenze

Composition: 46% Co, 36% Pl, 18% Vi

Test

• Lightfastness: 4/5

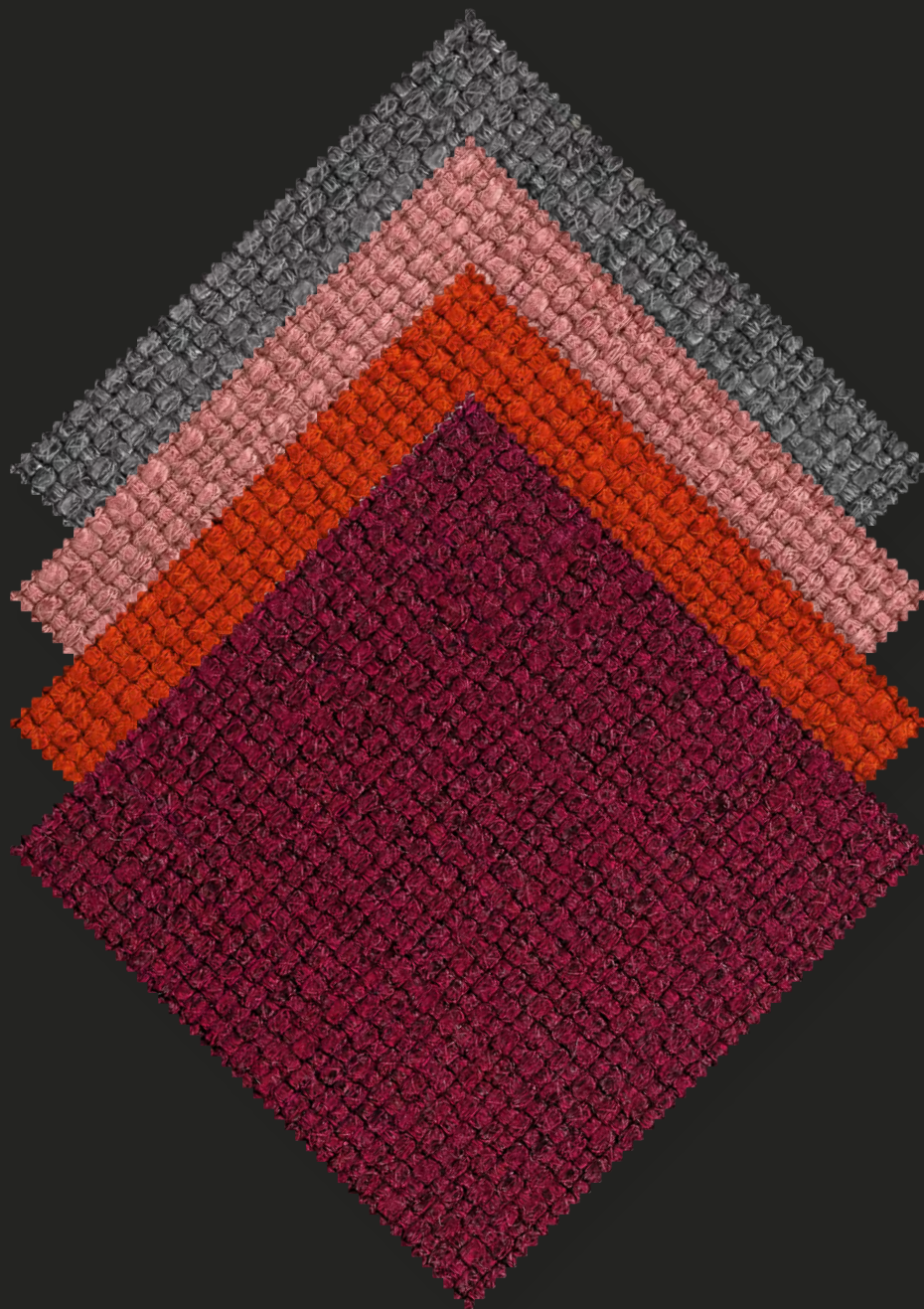
Martindale: 30.000 cycles

Washing: dry cleaning

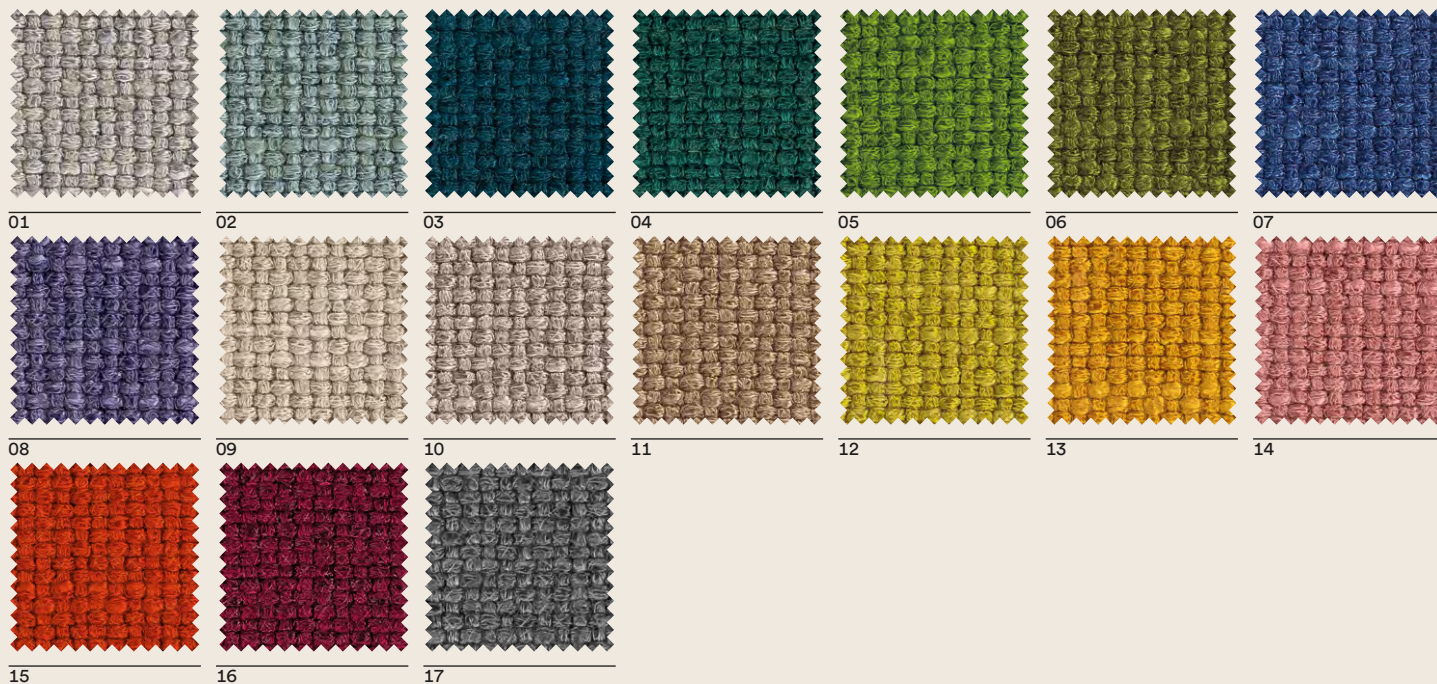
Application: contract upholstered furniture

Colour: little difference may occur

Category: ↳ Extra



Article: Evonimo



Composizione: 76% Vi, 13% Co, 8% Li, 3% Pa

Test

- Solidità alla luce: 4, UNI EN ISO 105-B02
- Pilling: 3/4, ISO 12945-2

Martindale: 100.000 cicli, UNI EN ISO 12497-2

Lavaggio: lavaggio a secco

Applicazioni: rivestimento per imbottito contract

Colore: possono riscontrarsi lievi differenze

Composition: 76% Vi, 13% Co, 8% Li, 3% Pa

Test

- Lightfastness: 4, UNI EN ISO 105-B02
- Pilling: 3/4, ISO 12945-2

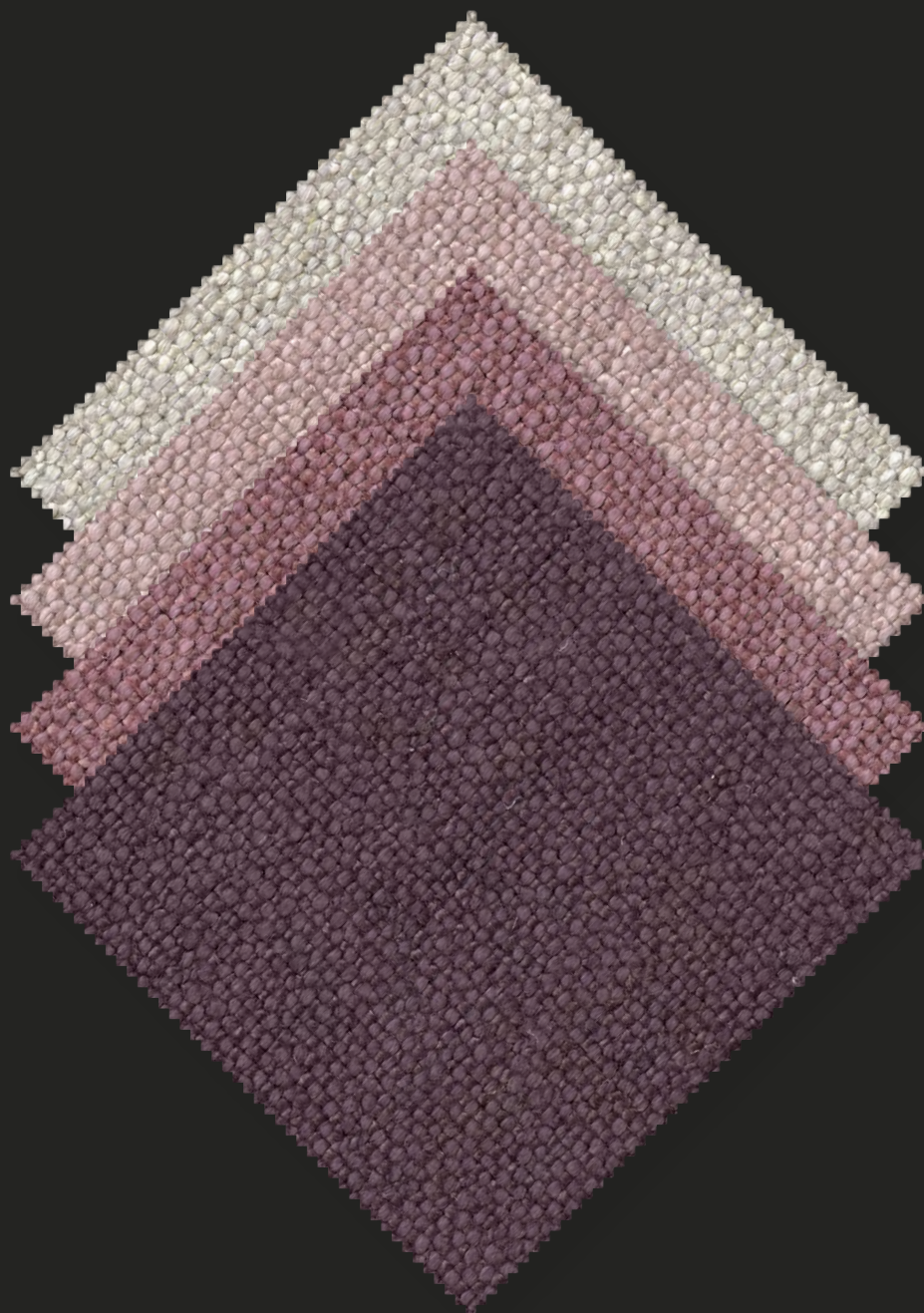
Martindale: 100.000 cycles, UNI EN ISO 12497-2

Washing: dry cleaning

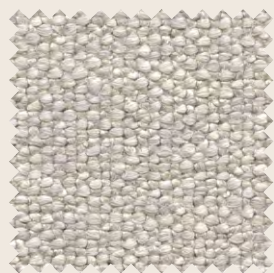
Application: contract upholstered furniture

Colour: Little difference may occur

Category: ↳ Extra



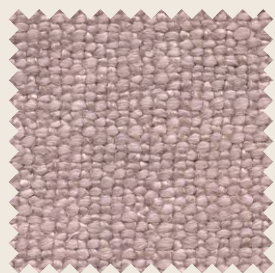
Article: Lars



01



02



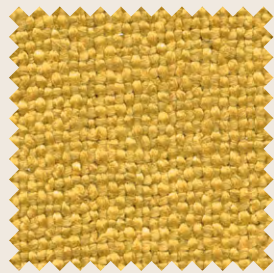
03



04



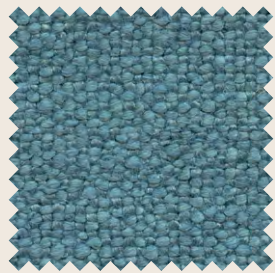
05



06



07



08



09



10



11

Composizione: 90% Li, 10% Pa

Test

- Solidità alla luce: 4/5, EN ISO 105-B02
- Pilling: 4/5-2.000 giri, EN ISO 12945-2

Martindale: 30.000 cicli, EN ISO 12947-2

Lavaggio: lavaggio a secco

Applicazioni: rivestimento per imbottito contract

Colore: possono riscontrarsi lievi differenze

Composition: 90% Li, 10% Pa

Test

- Lightfastness: 4/5, EN ISO 105-B02
- Pilling: 4/5-2.000 turns, EN ISO 12945-2

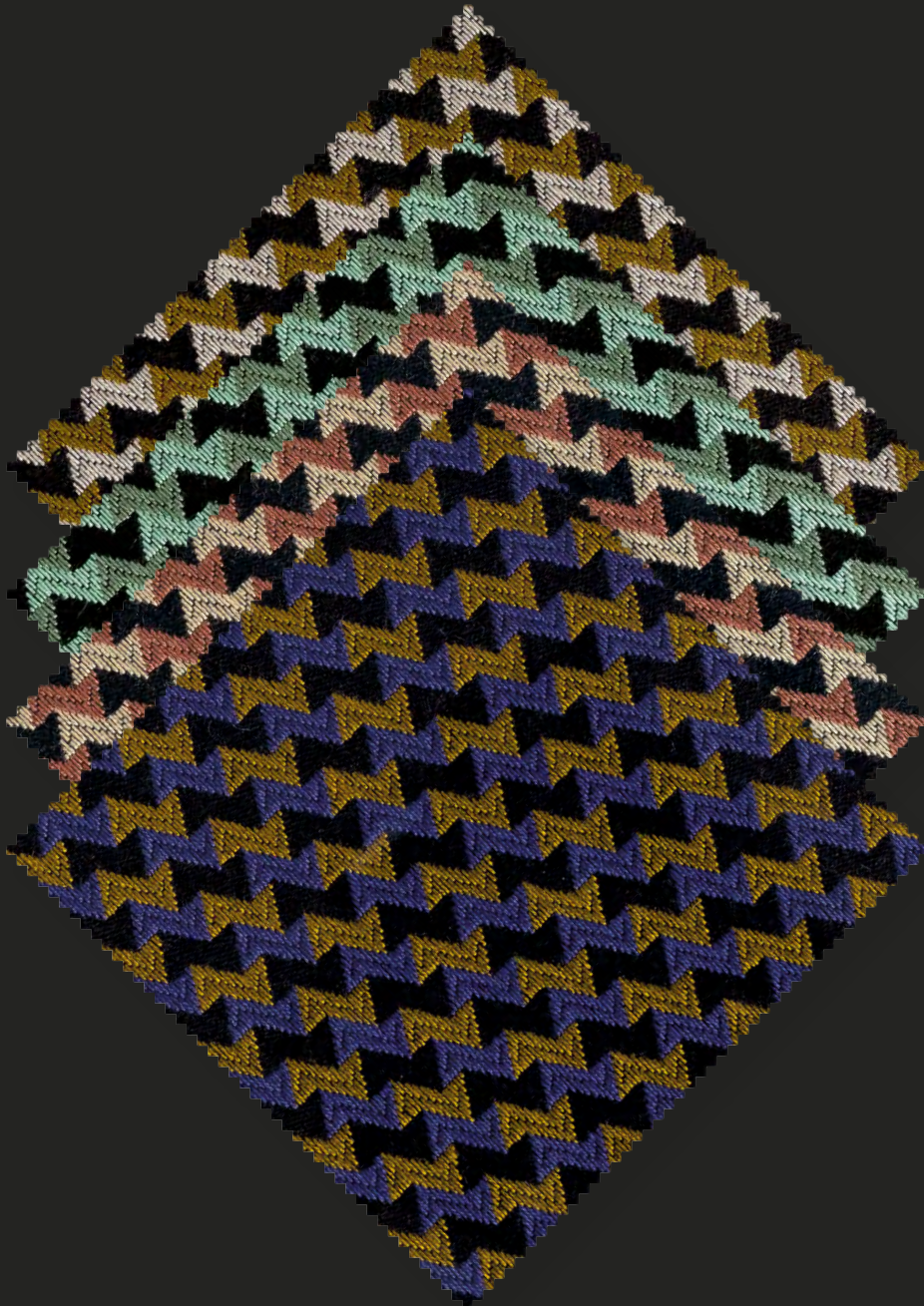
Martindale: 30.000 cycles, EN ISO 12947-2

Washing: dry cleaning

Application: contract upholstered furniture

Colour: little difference may occur

Category: ↳ Lusso



Article: Lemon



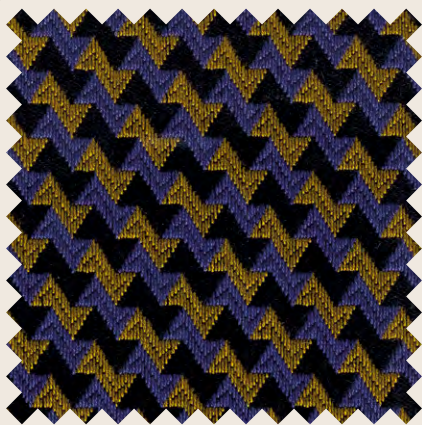
01



02



03



04

Composizione: 57% Vi, 43% Pl

Test

• Solidità alla luce: 4/5

Martindale: 30.000 cicli

Lavaggio: lavaggio a secco

Applicazioni: rivestimento per imbottito contract

Colore: possono riscontrarsi lievi differenze

Composition: 57% Vi, 43% Pl

Test

• Lightfastness: 4/5

Martindale: 30.000 cycles

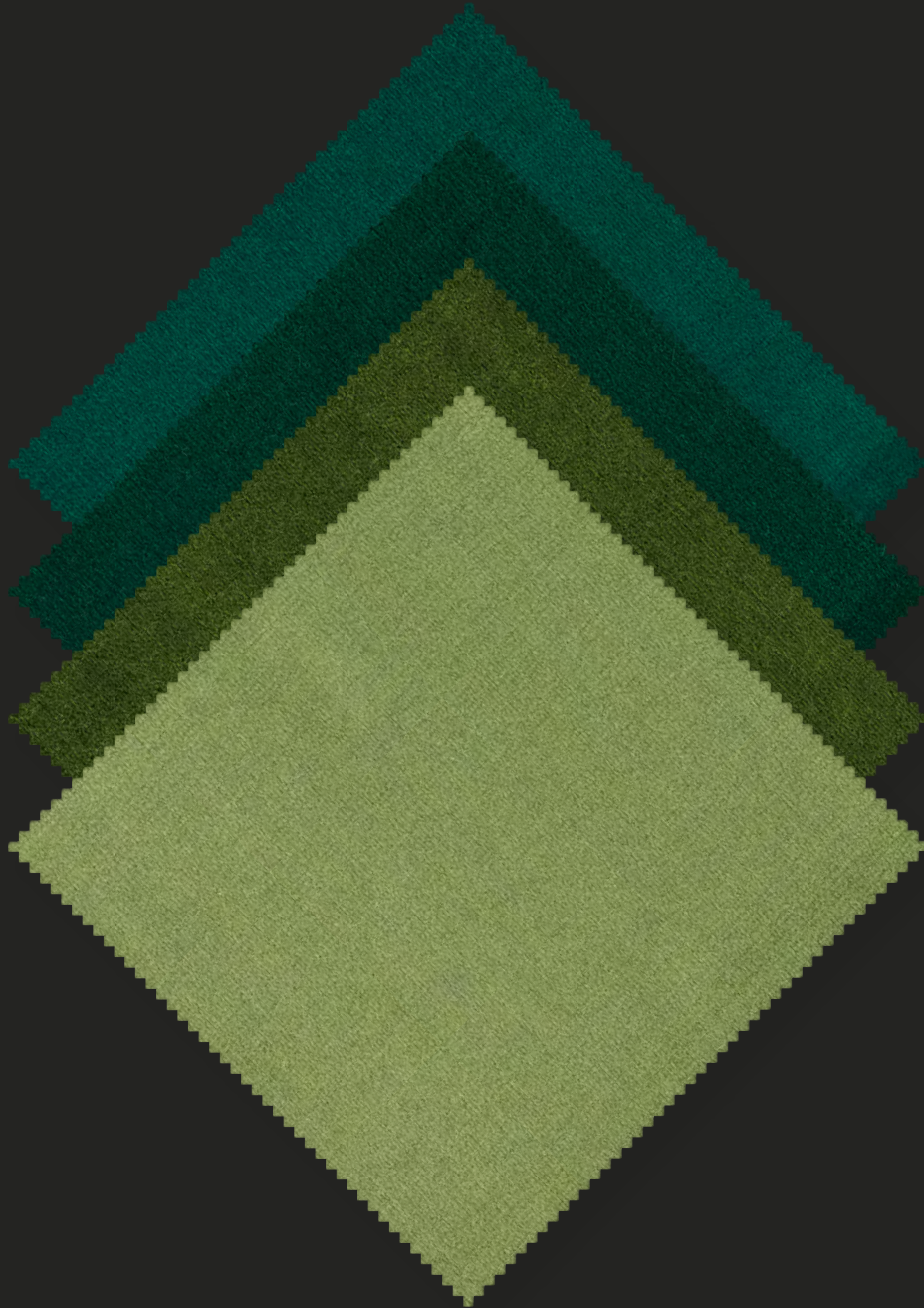
Washing: dry cleaning

Application: contract upholstered furniture

Colour: little difference may occur

Category: ↳ Lusso

Article: Ligustrum



Category: ↳ Lusso



Article: Ligustrum



Composizione: 100% Co

Test

- Solidità alla luce: 6, UNI EN ISO 105 - B02
- Resistenza alla fiamma: Cigarette test BS5852:1979, Part 0, Part 1
- Pilling: 5, UNI EN ISO 12945-2:2002

Martindale: 65.000 cicli, UNI EN ISO 12497-2

Lavaggio: lavaggio a secco

Applicazioni: rivestimento per imbottito contract

Colore: possono riscontrarsi lievi differenze

Anti ammaccamento
Idrorepellente

Composition: 100% Co

Test

- Lightfastness: 6, UNI EN ISO 105-B02
- Flammability: Cigarette test BS5852:1979, Part 0, Part 1
- Pilling: 5, UNI EN ISO 12945-2:2002

Martindale: 65.000 cycles, UNI EN ISO 12497-2

Washing: dry cleaning

Application: contract upholstered furniture

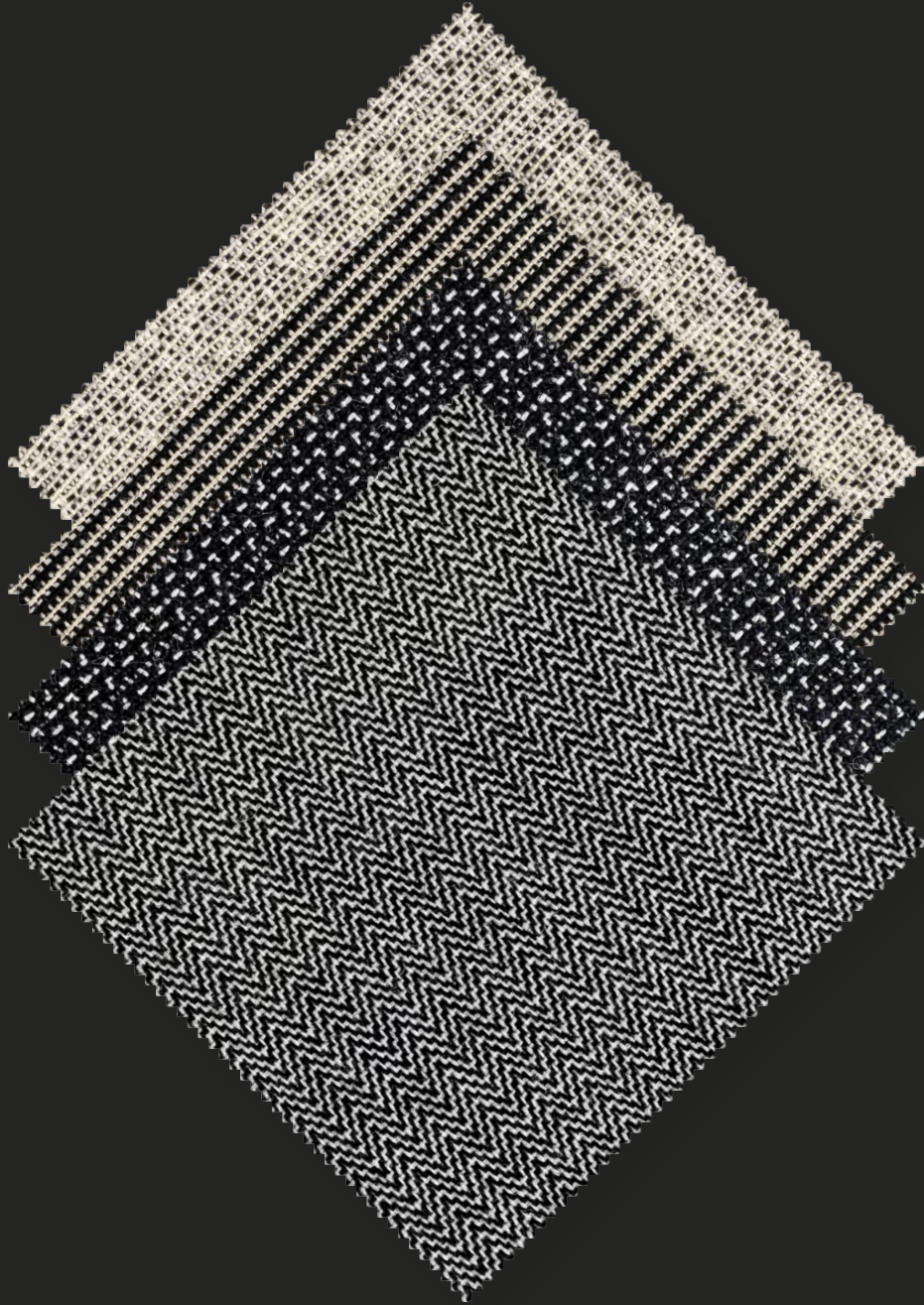
Colour: little difference may occur

Anti denting
Waterproof

Category: ↳ Lusso



Article: Lippia

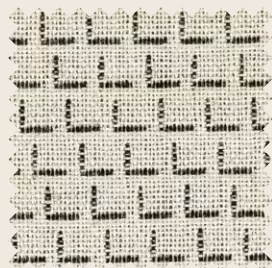


Category: ↳ Lusso

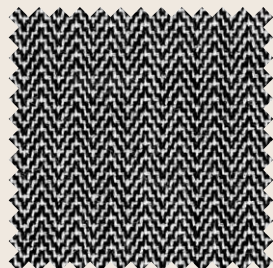




01



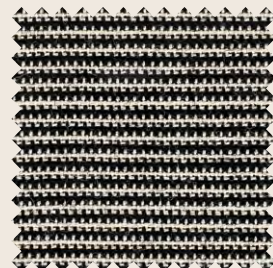
02



03



04



05



06



07

Composizione: 90% Wo, 10% PI

Test

- Solidità alla luce: 5/7, UNI EN ISO 105-B02
- Resistenza alla fiamma: EN ISO 1021 part 1&2, BS5852 crib 5, IMO FTP Code 2010: Part 8
- Oeko Tex
- EU Ecolabel SE/016/007

Martindale: 45.000 cicli, UNI EN ISO 12497-2

Lavaggio: lavaggio a secco

Applicazioni: rivestimento per imbottito contract

Colore: possono riscontrarsi lievi differenze

Composition: 90% Wo, 10% PI

Test

- Lightfastness:5/7, UNI EN ISO 105-B02
- Flammability: EN ISO 1021 part 1&2, BS5852 crib 5, IMO FTP Code 2010: Part 8
- Oeko Tex
- EU Ecolabel SE/016/007

Martindale: 45.000 cycles, UNI EN ISO 12497-2

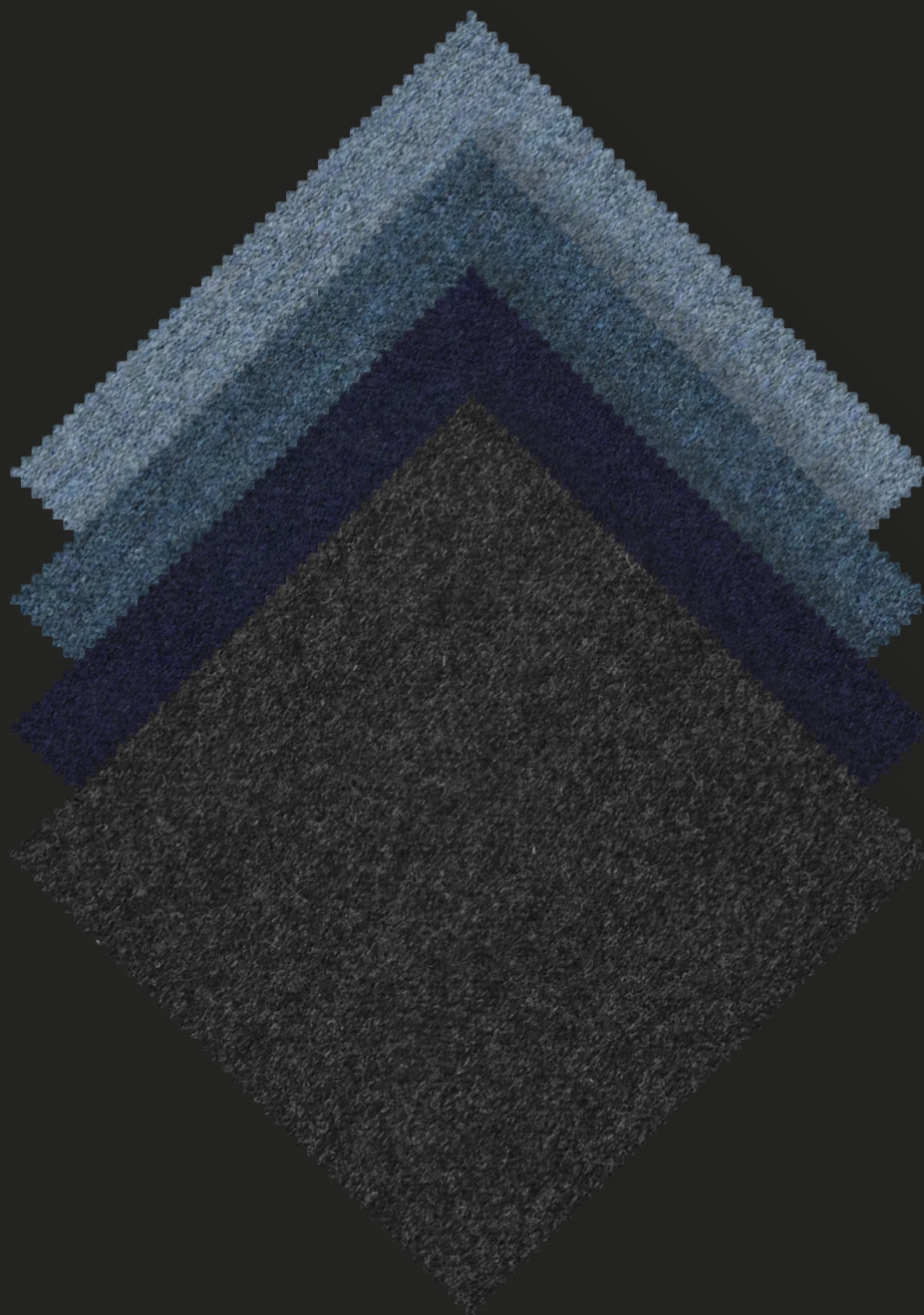
Washing: dry cleaning

Application: contract upholstered furniture

Colour: little difference may occur

Category: ↳ Lusso





Article: Liquidambar



Composizione: 93% Wo, 7% Pa

Martindale: 27.000 cicli, UNI EN ISO 12497-2

Lavaggio: lavaggio a secco

Applicazioni: rivestimento per imbottito home

Colore: possono riscontrarsi lievi differenze

Composition: 93% Wo, 7% Pa

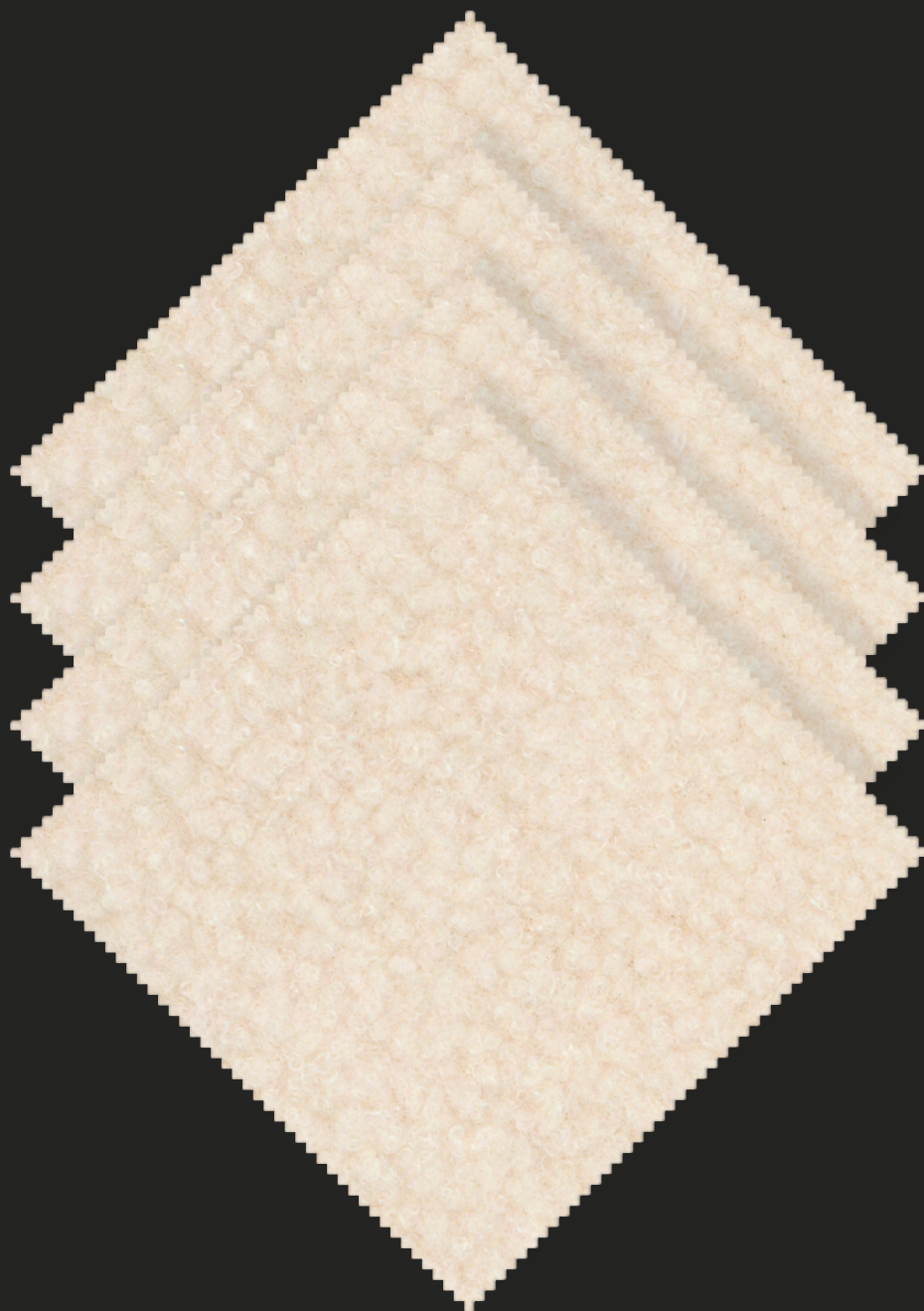
Martindale: 27.000 cycles, UNI EN ISO 12497-2

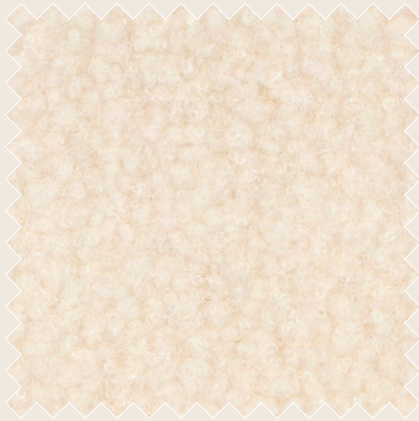
Washing: dry cleaning

Application: home upholstered furniture

Colour: little difference may occur

Category: ↳ Lusso





01

Composizione: 100% PI

Test

- Solidità alla luce: 4

Lavaggio: lavaggio a secco

Applicazioni: rivestimento per imbottito contract

Colore: possono riscontrarsi lievi differenze

Composition: 100% PI

Test

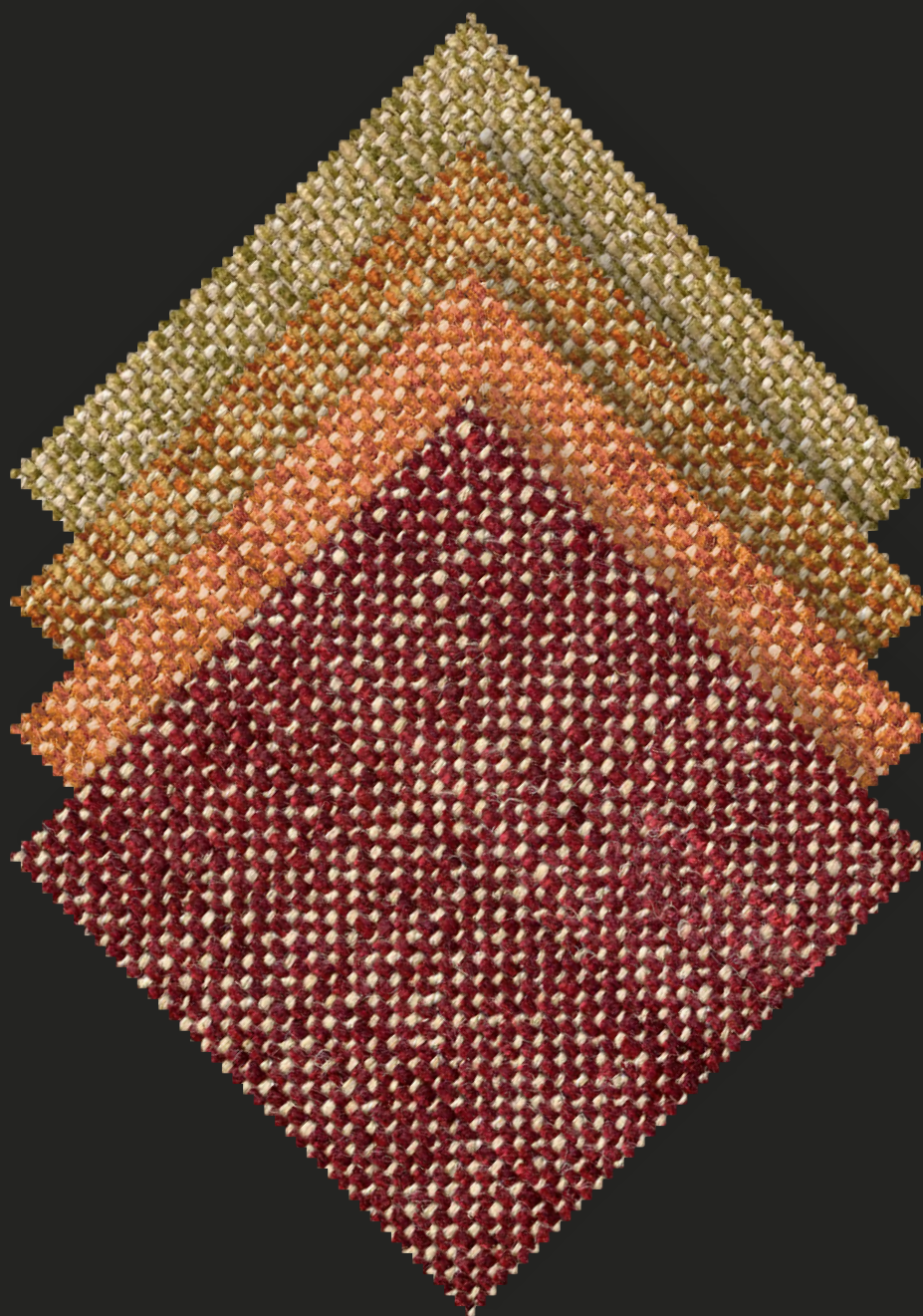
- Lightfastness: 4

Washing: dry cleaning

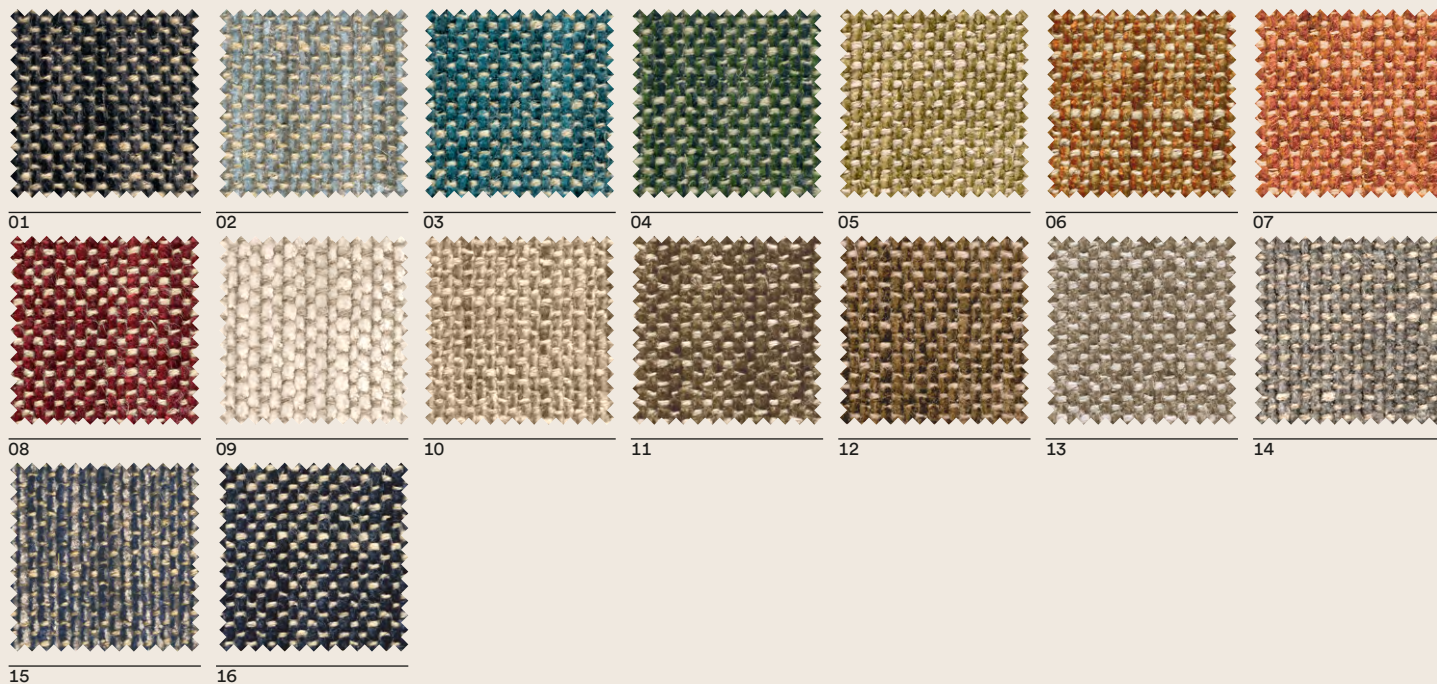
Application: contract upholstered furniture

Colour: little difference may occur

Category: ↳ Lusso



Article: Lorna



Composizione: 39% Co, 31% Li, 22% Vi, 4% Pl, 4% Pa

Test

- Solidità alla luce: 4/5, UNI EN ISO 105-B02
- Pilling: 4, EN ISO 12945-2

Martindale: 30.000 cicli, UNI EN ISO 12497-2

Lavaggio: lavaggio a secco

Applicazioni: rivestimento per imbottito contract

Colore: possono riscontrarsi lievi differenze

Composition: 39% Co, 31% Li, 22% Vi, 4% Pl, 4% Pa

Test

- Lightfastness: 4/5, UNI EN ISO 105-B02
- Pilling: 4, EN ISO 12945-2

Martindale: 30.000 cycles, UNI EN ISO 12497-2

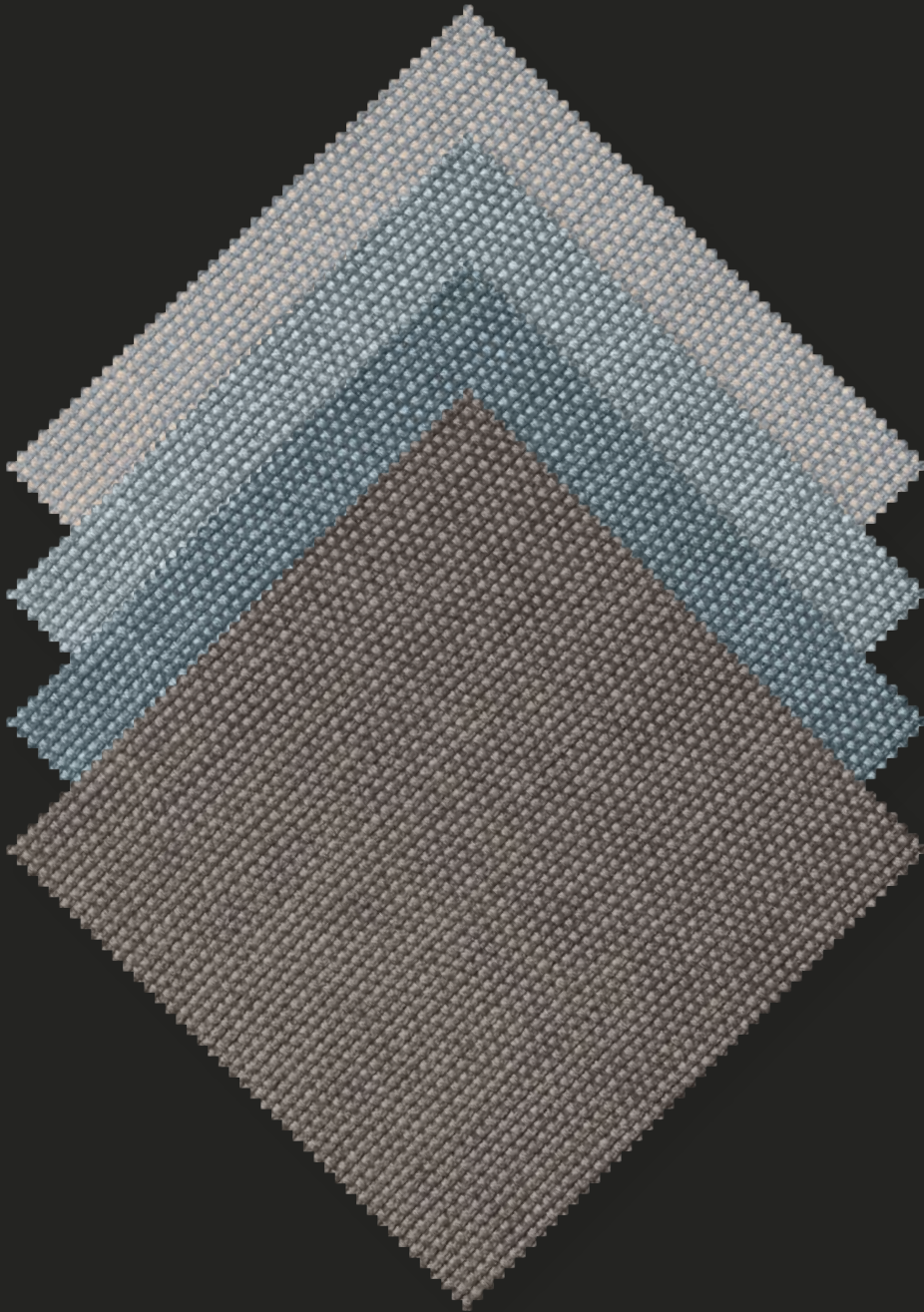
Washing: dry cleaning

Application: contract upholstered furniture

Colour: little difference may occur

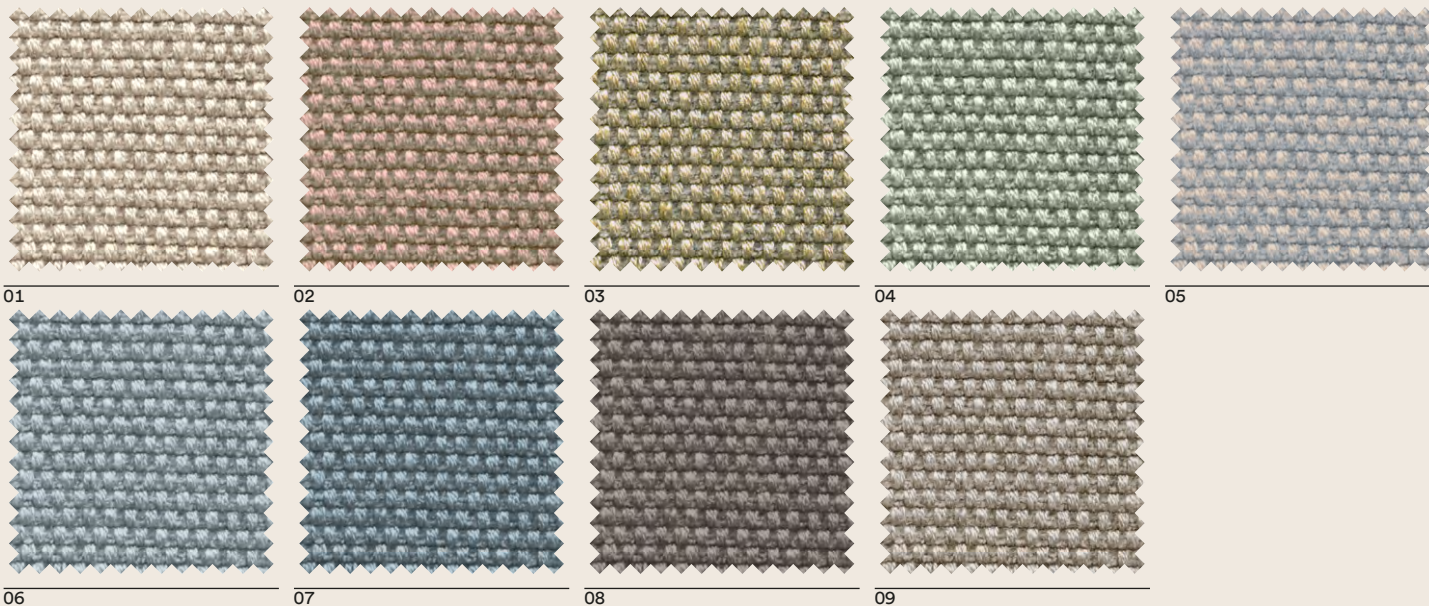
Category: ↳ Lusso

Article: Lunaria



Category: ↪ Lusso

Article: Lunaria



Composizione: 52% Vi, 25% Co, 12% Li, 11%PI

Test

- Resistenza alla trazione: ordito 400, trama 370
- Resistenza alla lacerazione: ordito > 150, trama > 150
- Resistenza allo slittamento dei fili - 6mm: ordito 200, trama 200

Martindale: 38.000 giri

Pilling: 4, solidità alla luce 4, solidità allo sfregamento secco 4, solidità allo sfregamento umido 3, solidità all'abrasione 3/4, al lavaggio a secco 3/4

Ritiri al lavaggio a secco: ordito 1,0%, trama 1,0%

Lavaggio: lavaggio a secco

Candeggio: no candeggio

Stiratura: con ferro a massimo 110° C

Asciugatura: non asciugare in macchina

Composition: 52% Vi, 25% Co, 12% Li, 11%PI

Test

- Breaking strength: warp 400, weft 370
- Tear strength: warp > 150, weft > 150
- Seam slippage - 6mm: warp 200, weft 200

Martindale: 38.000 cycles

Pilling: 4, lightfastness 4, to dry rubbing 4, to wet rubbing 3, to abrasion 3/4, to dry cleaning 3/4

Shrinkage dry: warp 1,0%, weft 1,0%

Washing: dry cleaning

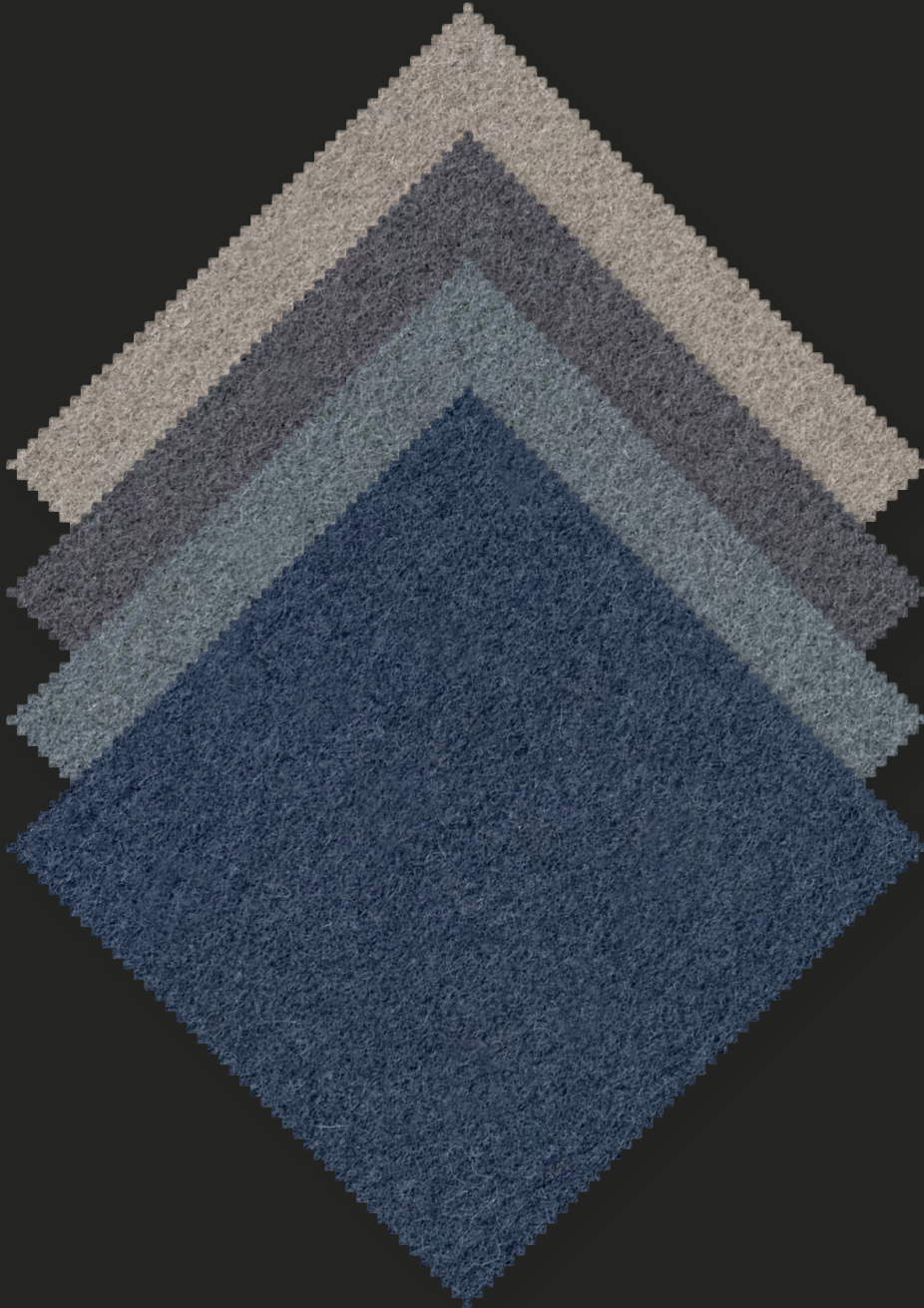
Bleaching: do not bleach

Ironing: maximum 110° C

Drying: do not tumble dry

Category: ↳ Lusso

Article: Early



Category: ↪ Special





Composizione: 100% Lane della Nuova Zelanda

Test

- Resistenza alla luce: 5/7, EN ISO 105-B02
- Pilling: 4, EN ISO 12945-2
- Resistenza alla fiamma: California Bulletin CAL 117 E-Class 1, BS 5852 part 1 0,1 Cigarette & Match, Onorm b 3825-b2-3800-q1, Class Uno UNI 9175 Class 1 EMME, BS EN 1021 1&2, ASTM E 84, CA TB 117-2013, DIN 4102 BS, BS 476 part 7, class 1
- Navale: Imo msc 307(88) annex 1 part 8, MED certificate IMO
- Acustico: test acustico flusso d'aria, EN 29053
- test assorbimento acustico, ISO 354
- Amico dell'ambiente: Oeko-Tex, EU Ecolabel

Martindale: 50.000 cicli, EN ISO 12947-2

Lavaggio: lavaggio a secco

Applicazioni: rivestimento per imbottito contract

Colore: possono riscontrarsi lievi differenze

Composition: 100% Wools of New Zealand

Test

- Lightfastness: 5/7, EN ISO 105-B02
- Pilling: 4, EN ISO 12945-2
- Flammability: California Bulletin CAL 117 E-Class 1, BS 5852 part 1 0, 1 Cigarette & Match, Onorm b 3825-b2-3800-q1, Class Uno UNI 9175 Class 1 EMME, BS EN 1021 1&2, ASTM E 84, CA TB 117-2013, DIN 4102 BS, BS 476 part 7, class 1
- Nautical: Imo msc 307(88) annex 1 part 8, MED certificate IMO
- Acoustic: acoustic test air flow resistance, EN 29053
- acoustic test sound absorption, ISO 354
- Environmentally friendly: Oeko-Tex certified, Labelled with EU Ecolabel

Martindale: 50.000 cycles, EN ISO 12947-2

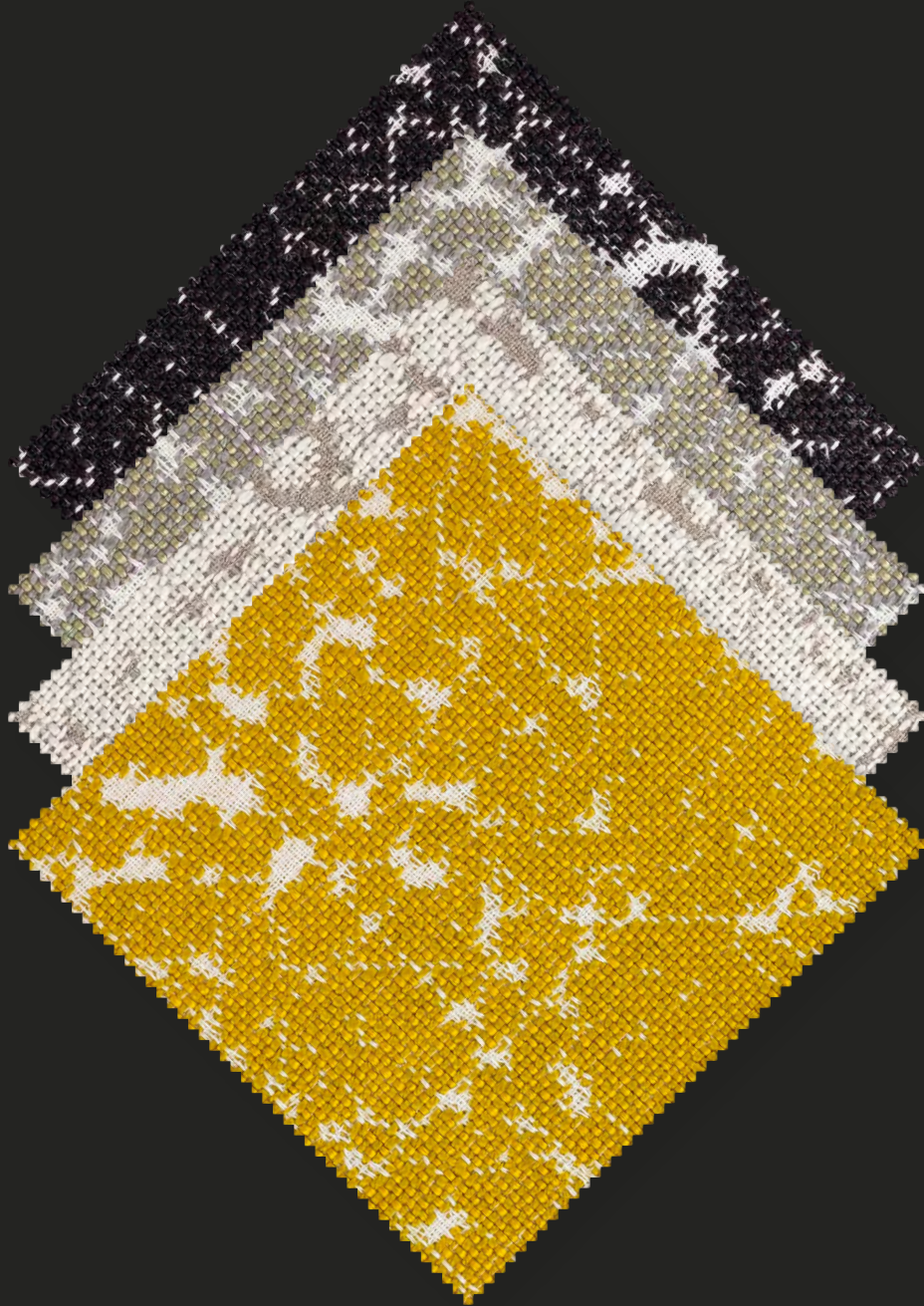
Washing: dry cleaning

Application: contract upholstered furniture

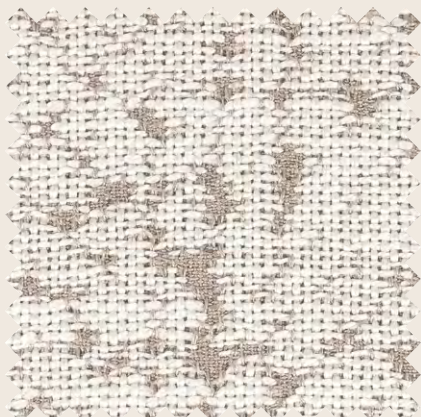
Colour: little difference may occur

Category: ↪ Special

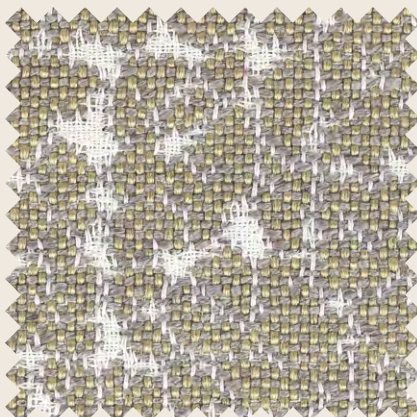




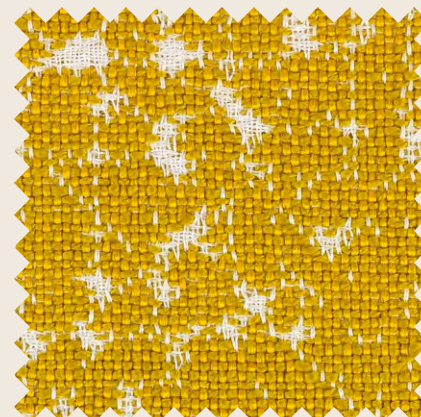
Article: Schimmia



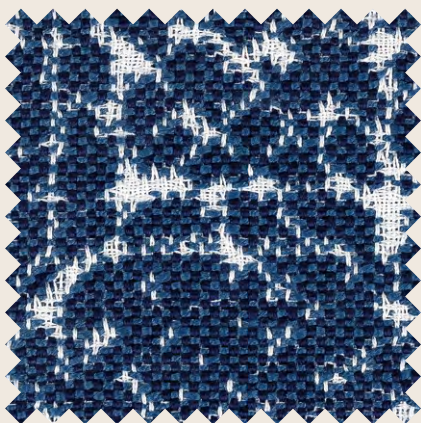
01



02



03



04



05

Composizione: 100% PI flame retardant

Test

- Solidità alla luce: 7
- Resistenza alla fiamma: B1, BS5852 part 0 & 1, BS5867, Classe 1, M1, IMO 8

Martindale: 50.000 cicli, UNI EN ISO 12497-2

Lavaggio: lavaggio a secco

Applicazioni: rivestimento per imbottito contract

Colore: possono riscontrarsi lievi differenze

Composition: 100% PI flame retardant

Test

- Lightfastness: 7
- Flammability: B1, BS5852 part 0 & 1, BS5867, Classe 1, M1, IMO 8

Martindale: 50.000 cycles, UNI EN ISO 12497-2

Washing: dry cleaning

Application: contract upholstered furniture

Colour: little difference may occur

Category: ↳ Special



Article: Sedum



Category: ↳ Special



01



02



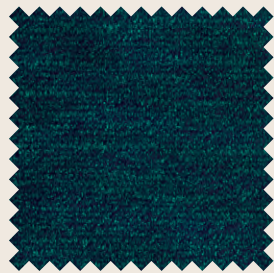
03



04



05



06



07



08

Composizione: 35% Vi, 42% Pl, 23% Co

Test

- Solidità alla luce: 5, UNI EN ISO 105 - B02
- Pilling: 4, UNI EN ISO 12945-2:2002

Martindale: 95.000 cicli, UNI EN ISO 12497-2

Lavaggio: lavaggio a secco

Applicazioni: rivestimento per imbottito contract

Colore: possono riscontrarsi lievi differenze

Composition: 35% Vi, 42% Pl, 23% Co

Test

- Lightfastness: 5, UNI EN ISO 105-B02
- Pilling: 4, UNI EN ISO 12945-2:2002

Martindale: 95.000 cycles, UNI EN ISO 12497-2

Washing: dry cleaning

Application: contract upholstered furniture

Colour: little difference may occur

Category: ↳ Special

Article: Silene



Category: ↳ Special





Composizione: 100% Lana vergine

Test

- Solidità alla luce: 4/5, ISO 105-B02
- Pilling: 3/4, ISO 12945-2
- Resistenza alla fiamma: UNI 9175 class 1 IM, EN 1021-1:2006, EN 1021-2:2006, BS 5852 IS 0 (cigarette), BS 5852 IS 1 (match), California TB 117:2013
- Navale: FTP code 307(88) Annex 1 part 8, ex IMO res A.652 (16)

Trattamento speciale anti-Pilling: tessuto trattato in finissaggio con il Sistema Termofisico "KD" ed è inalterabile. Né la bagnatura né il ferro da stiro potranno modificare le caratteristiche della stoffa.

Acustico: assorbimento acustico, UNI EN ISO 10534-2:2001

Martindale: 65.000 cicli, ISO 12947-2

Lavaggio: lavaggio a secco

Applicazioni: rivestimento per imbottito contract

Colore: possono riscontrarsi lievi differenze

Composition: 100% Virgin wool

Test

- Lightfastness: 4/5, ISO 105-B02
- Pilling: 3/4, ISO 12945-2
- Flammability: UNI 9175 classe 1 IM, EN 1021-1:2006, EN 1021-2:2006, BS 5852 IS 0 (cigarette), BS 5852 IS 1 (match), California TB 117:2013
- Nautical: FTP code 307(88) Annex 1 part 8, ex IMO res A.652 (16)

Special anti-Pilling treatment: fabric treated in finishing with the Termophysical System "KD" and it is inalterable. Neither wetting nor ironing modify the characteristic of the cloth.

Acoustic: acoustic absorption, UNI EN ISO 10534-2:2001

Martindale: 65.000 cycles, ISO 12947-2

Washing: dry cleaning

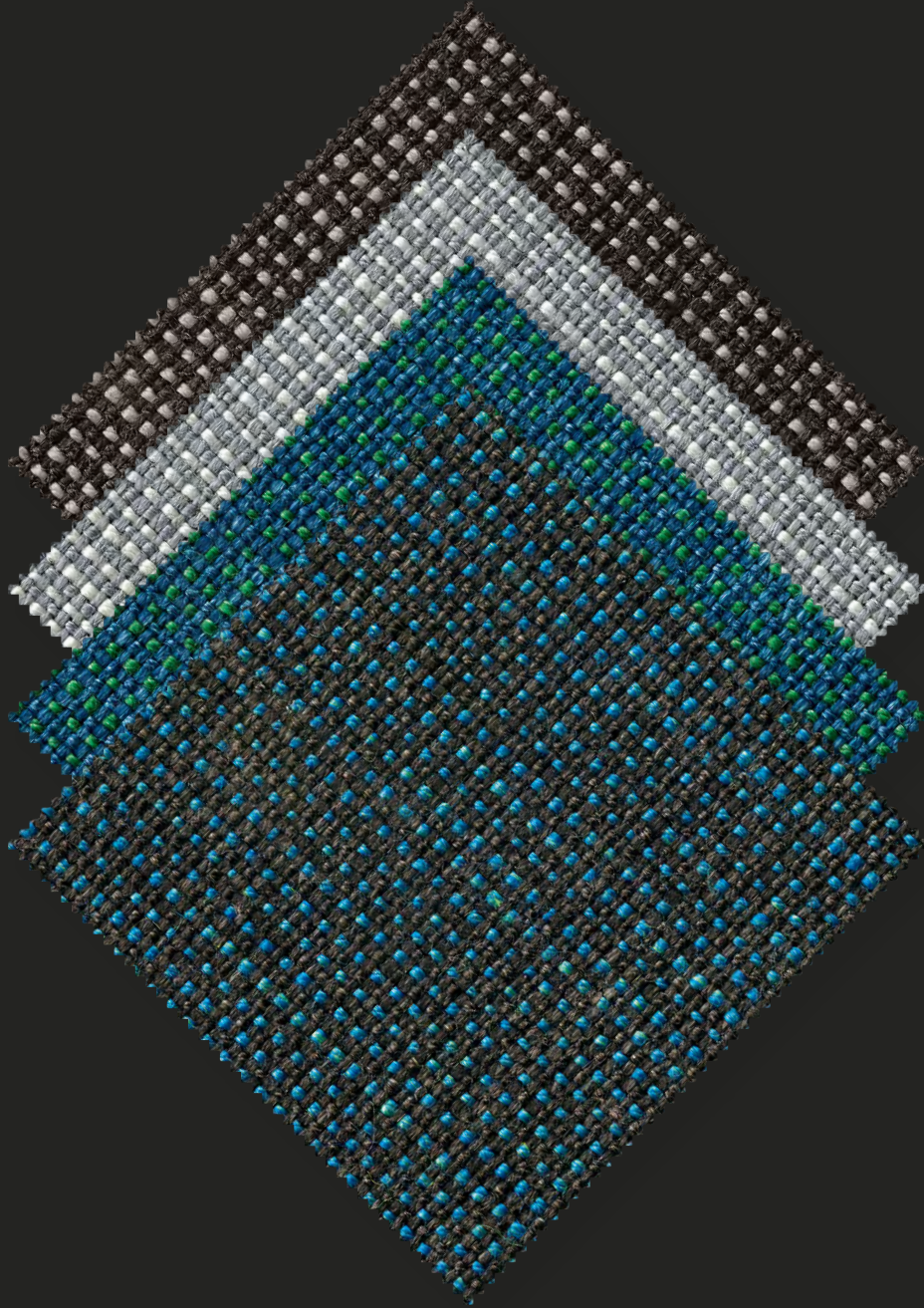
Application: contract upholstered furniture

Colour: little difference may occur

Category: ↳ Special

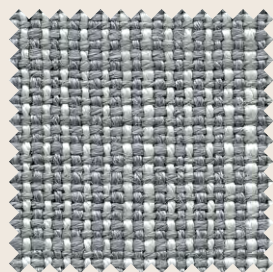


Article: Sorbus

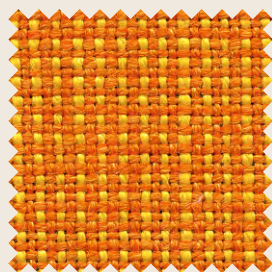


Category: ↳ Special

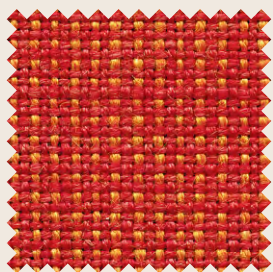




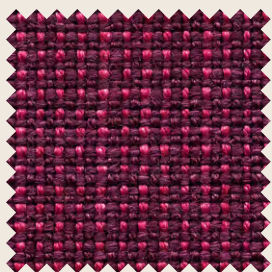
01



02



03



04



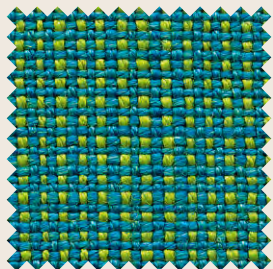
05



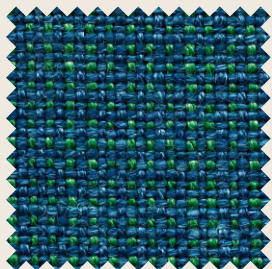
06



07



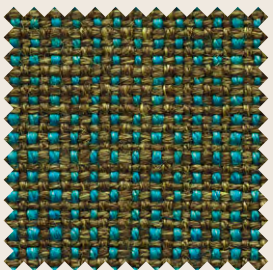
08



09



10



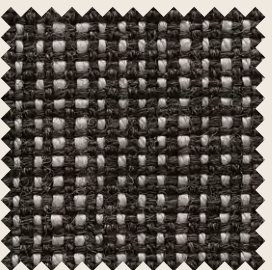
11



12



13



14

Composizione: 80% Wo, 20% Rami

Test

- Solidità alla luce: 5, UNI EN ISO 105-B02
- Resistenza alla fiamma: EN ISO 1021 part 1 & 2, BS 5852 Crib 5
- Navale: IMO Ftp Code Part 8, (IMO Res. A 652 (16))
- Oeko Tex
- Pilling: 4, EN ISO 12945-2

Martindale: 70.000 cicli, UNI EN ISO 12497-2

Lavaggio: lavaggio a secco

Applicazioni: rivestimento per imbottito contract e home

Colore: possono riscontrarsi lievi differenze

Composition: 80% Wo, 20% Rami

Test

- Lightfastness: 5, UNI EN ISO 105-B02
- Flammability: EN ISO 1021 part 1 & 2, BS 5852 Crib 5
- Naval: IMO Ftp Code Part 8, (IMO Res. A 652 (16))
- Oeko Tex
- Pilling: 4, EN ISO 12945-2

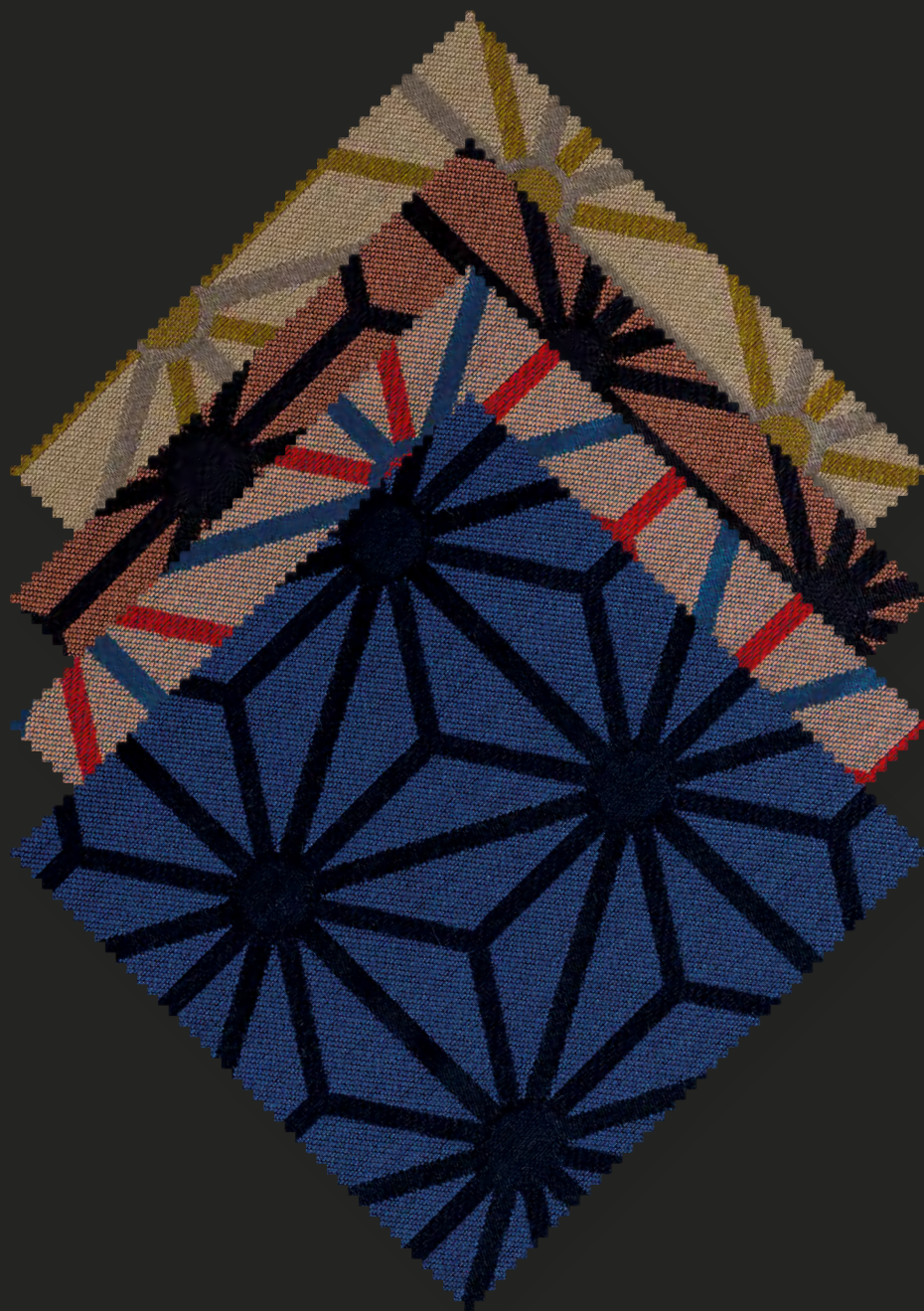
Martindale: 70.000 cycles, UNI EN ISO 12497-2

Washing: dry cleaning

Application: contract and home upholstered furniture

Colour: little difference may occur

Category: ↳ Special



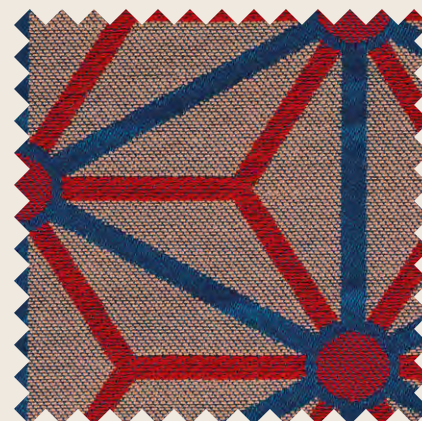
Article: Steila



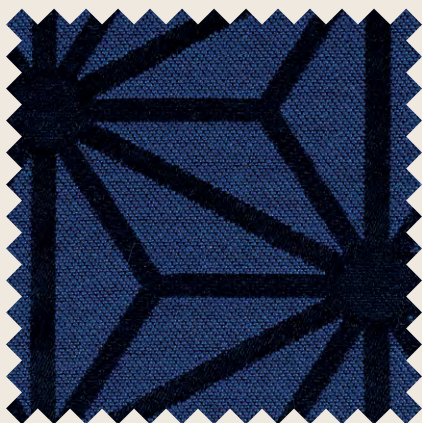
01



02



03



04



05

Composizione: 55% Vi, 45% Pl

Test

• Solidità alla luce: 4/5

Martindale: 30.000 cicli

Lavaggio: lavaggio a secco

Applicazioni: rivestimento per imbottito contract

Colore: possono riscontrarsi lievi differenze

Composition: 55% Vi, 45% Pl

Test

• Lightfastness: 4/5

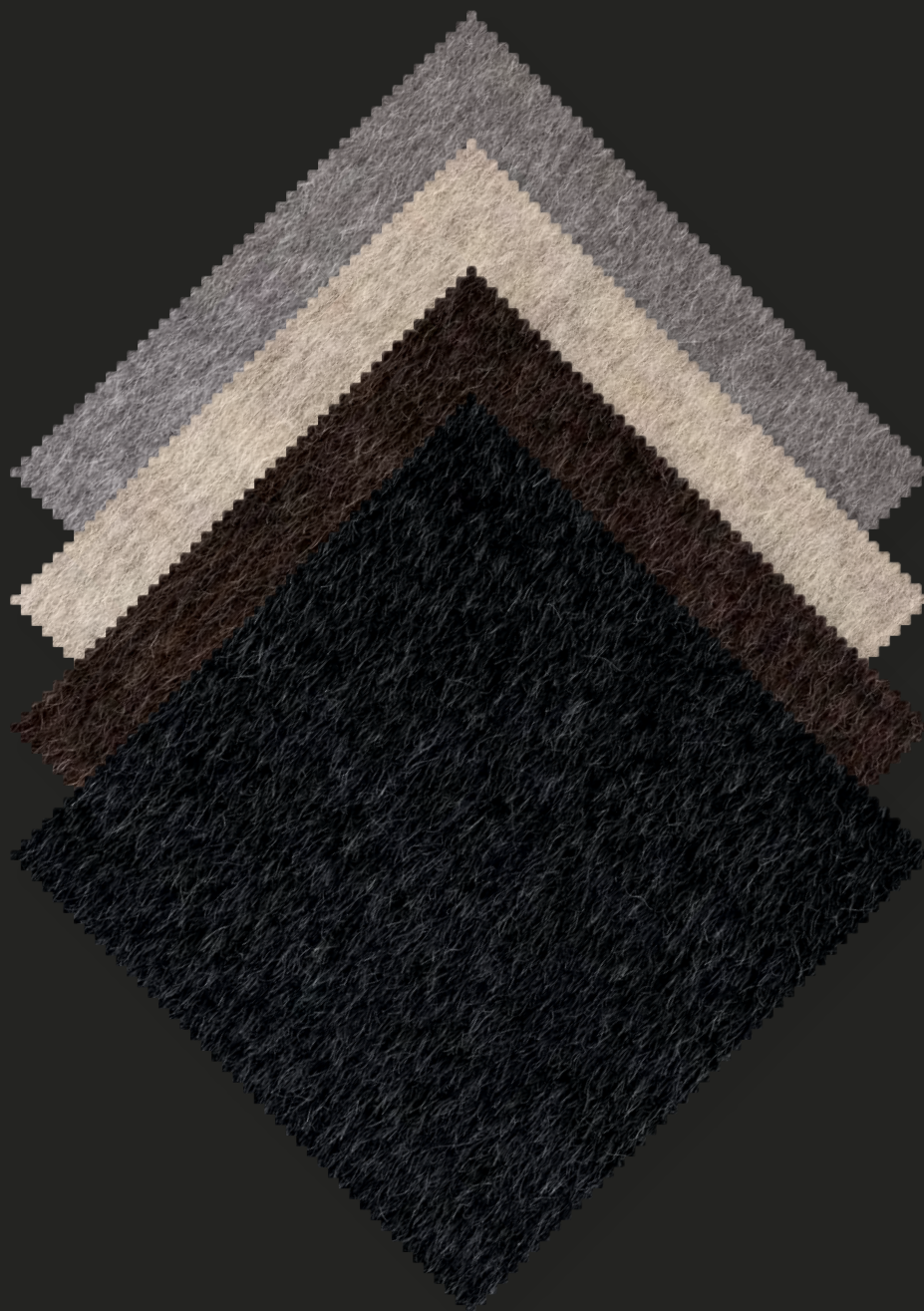
Martindale: 30.000 cycles

Washing: dry cleaning

Application: contract and home upholstered furniture

Colour: little difference may occur

Category: ↳ Special



Article: Stewartia



01



02



03



04

Composizione: 70% Wv, 30% Wp

Test

• Pilling: 4/5 – 2.000 giri, UNI EN ISO 12945-2

Martindale: 10.000 cicli, UNI EN ISO 12497-2

Lavaggio: lavaggio a secco

Applicazioni: rivestimento per imbottito contract e home

Colore: possono riscontrarsi lievi differenze

Composition: 70% Wv, 30% Wp

Test

• Pilling: 4/5 – 2.000 cycles, UNI EN ISO 12945-2

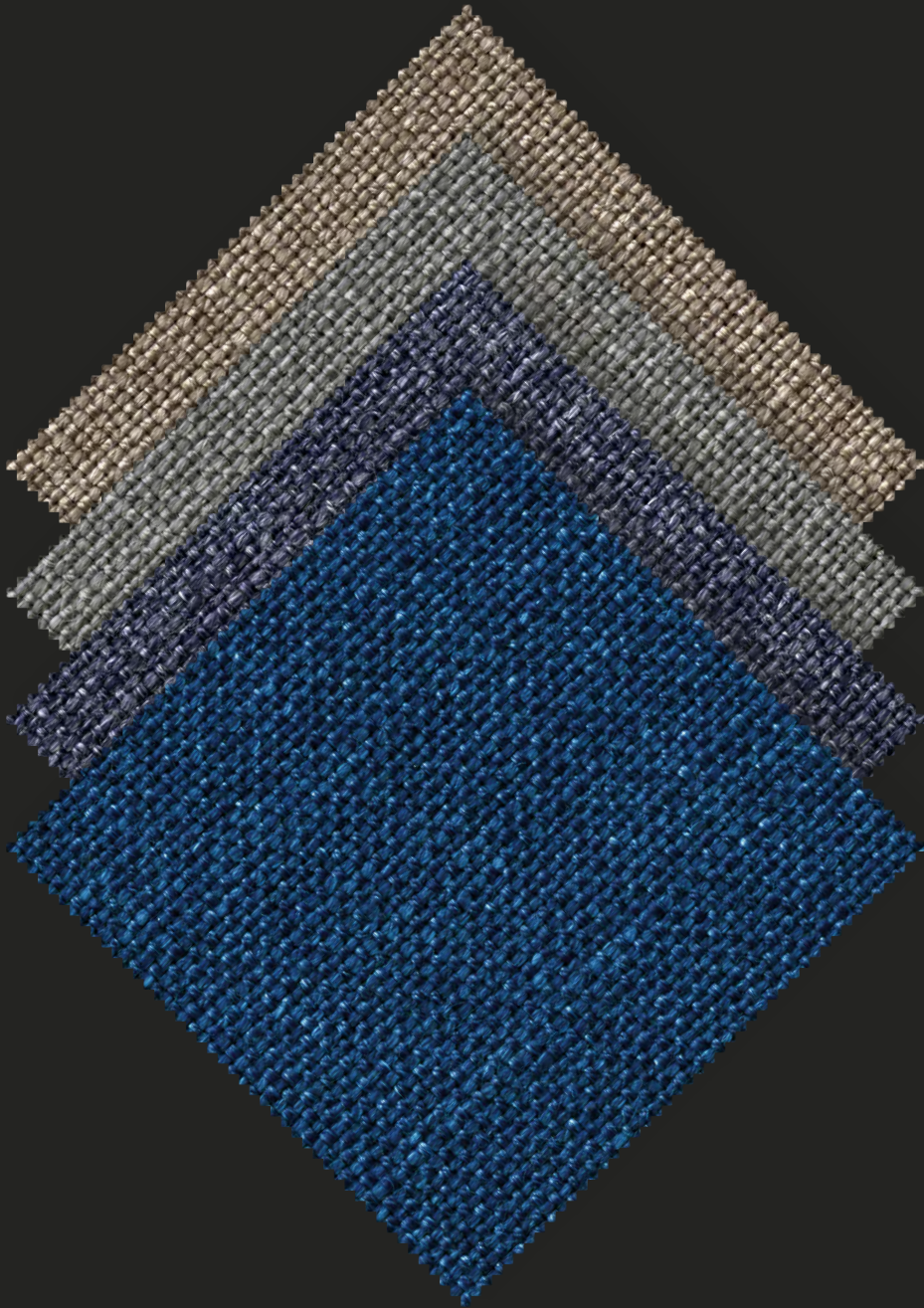
Martindale: 10.000 cycles, UNI EN ISO 12497-2

Washing: dry cleaning

Application: contract and home upholstered furniture

Colour: little difference may occur

Category: ↳ Special



Article: Thesium



Composizione: 80% Lana, 20% Rami

Test

- Solidità alla luce: 5-7, EN ISO 105-B02
- Resistenza alla fiamma: EN ISO 1021 part 1&2, BS 5852 Crib 5
- Navale: IMO FTP Code Part 8, (IMO Res.A.652 (16))
- Oeko Tex

Martindale: 70.000 cicli, EN ISO 12947-2

Lavaggio: lavaggio a secco

Applicazioni: rivestimento per imbottito contract

Colore: possono riscontrarsi lievi differenze

Composition: 80% Wool, 20% Rami

Test

- Lightfastness: 5-7, EN ISO 105-B02
- Flammability: EN ISO 1021 part 1&2, BS 5852 Crib 5
- Nautical: IMO FTP Code Part 8, (IMO Res.A.652 (16))
- Oeko Tex

Martindale: 70.000 cycles, EN ISO 12947-2

Washing: dry cleaning

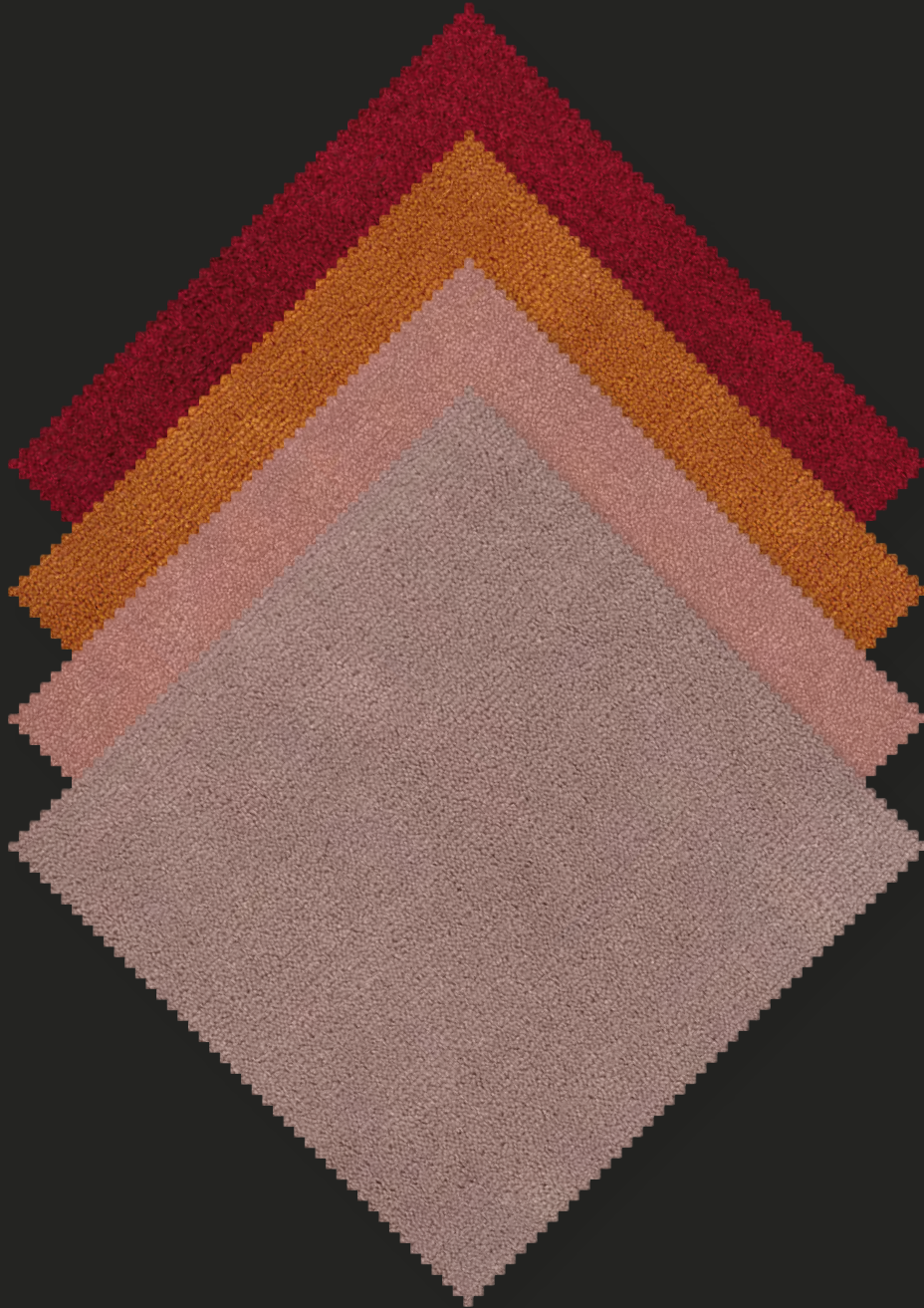
Application: contract upholstered furniture

Colour: little difference may occur

Category: ↳ Top



Article: Tibouchina





Composizione: 100% PI FR

Test

- Solidità alla luce: 4/6, UNI EN ISO 105-B02
- Resistenza alla fiamma: BS5852 Crib 5, BS5852 part 1, DIN 4102 B1, EN 1021-1/2, IMO FTP Code 2010 Part 8, NF P 92 507 M1, SN 198 898 5.2, UNI 9175 1IM, Onorm B1/Q1
- Pilling: 4, ISO 12945-2

Martindale: 100.000 cicli, UNI EN ISO 12497-2

Lavaggio: lavaggio a secco

Applicazioni: rivestimento per imbottito contract

Colore: possono riscontrarsi lievi differenze

Conforme alla normativa REACH

Composition: 100% PI FR

Test

- Lightfastness: 4/6, UNI EN ISO 105-B02
- Flammability: BS5852 Crib 5, BS5852 part 1, DIN 4102 B1, EN 1021-1/2, IMO FTP Code 2010 Part 8, NF P 92 507 M1, SN 198 898 5.2, UNI 9175 1IM, Onorm B1/Q1
- Pilling: 4, ISO 12945-2

Martindale: 100.000 cycles, UNI EN ISO 12497-2

Washing: dry cleaning

Application: contract upholstered furniture

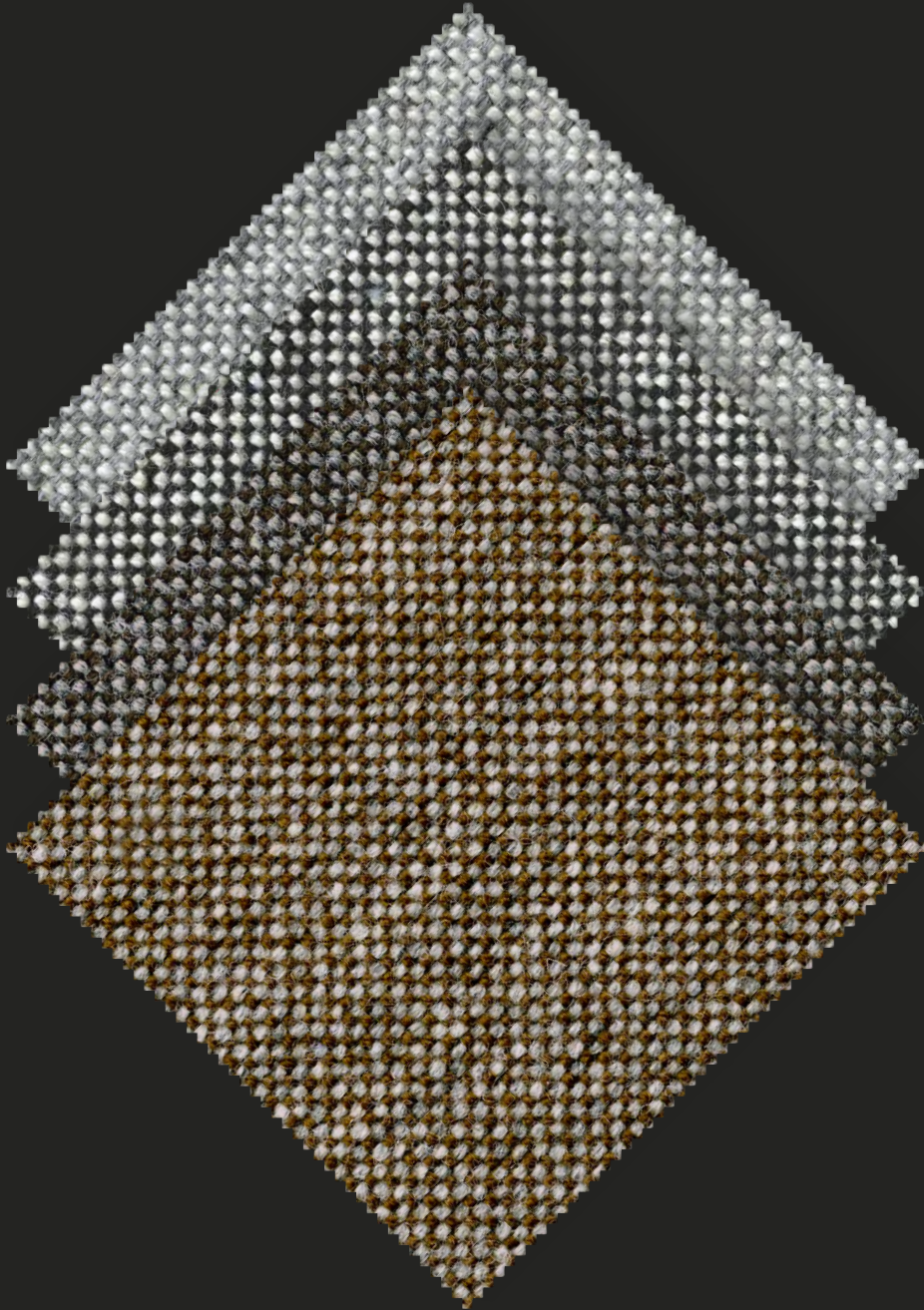
Colour: little difference may occur

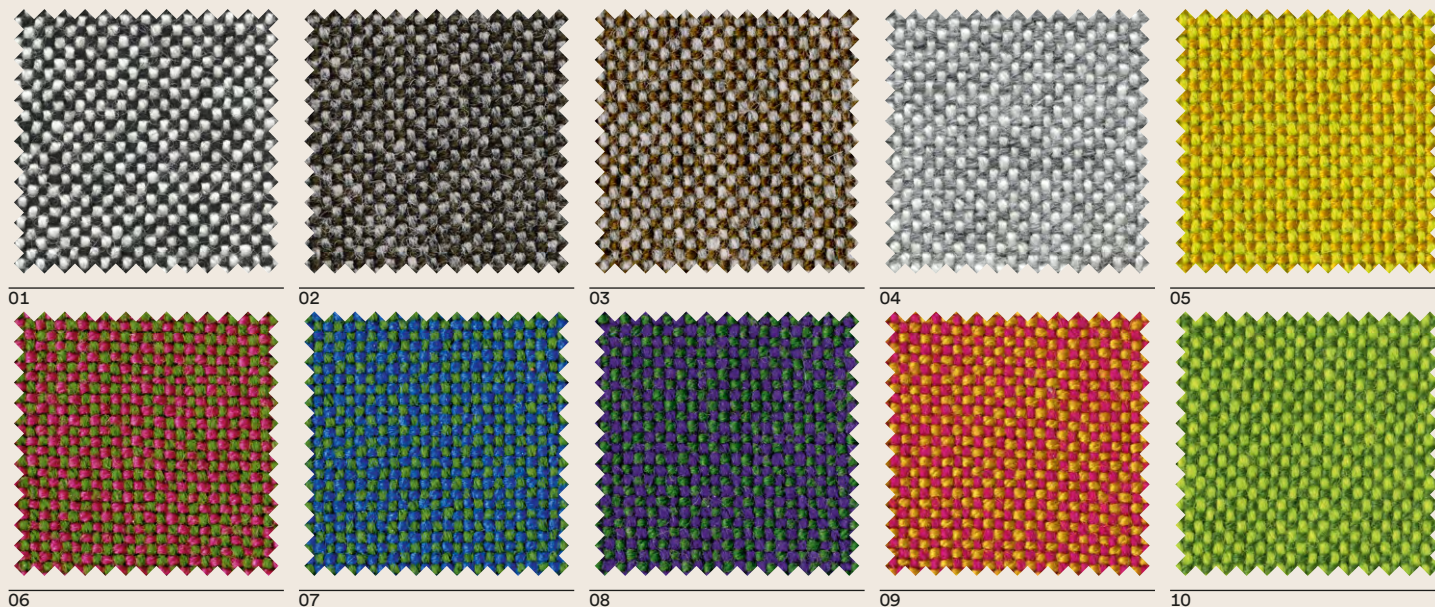
Comply to REACH regulation

Category: ↳ Top



Article: Trifolium





Composizione: 70% Lana vergine, 30% Viscosa

Test

- Solidità alla luce: 7, ISO 105 B02
- Pilling: 3, EN ISO 12945-2:2000
- Resistenza alla fiamma: AS/NZS 1530.3, AS/NZ NZS 3837, BS 5852 Crib 5, BS 5852 part 1, DIN 4102 B2, EN 1021-1/2, NF D 60 013, NFPA 260, ONORM B1/Q1, UNI 9175 1IM, US Cal. Bull 117-2013
- Navale: IMO FTP Code 2010 Part 8
- Acustico: test acustico flusso d'aria, EN 11654
- Etichetta "the Flower"

Martindale: 100.000 cicli, EN ISO 12947-2:1998

Lavaggio: lavaggio a secco

Applicazioni: rivestimento per imbottito contract

Colore: possono riscontrarsi lievi differenze

Composition: 70% Virgin wool, 30% Viscose

Test

- Lightfastness: 7, ISO 105 B02
- Pilling: 3, EN ISO 12945-2:2000
- Flammability: AS/NZS 1530.3, AS/NZ NZS 3837, BS 5852 Crib 5, BS 5852 part 1, DIN 4102 B2, EN 1021-1/2, NFD60013, NFPA 260, ONORM B1/Q1, UNI 9175 1IM, US Cal. Bull 117-2013
- Nautical: IMO FTP Code 2010 Part 8
- Acoustic: acoustic test air flow resistance, EN 11654
- EU Ecolabel "the flower"

Martindale: 100.000 cycles, EN ISO 12947-2:1998

Washing: dry cleaning

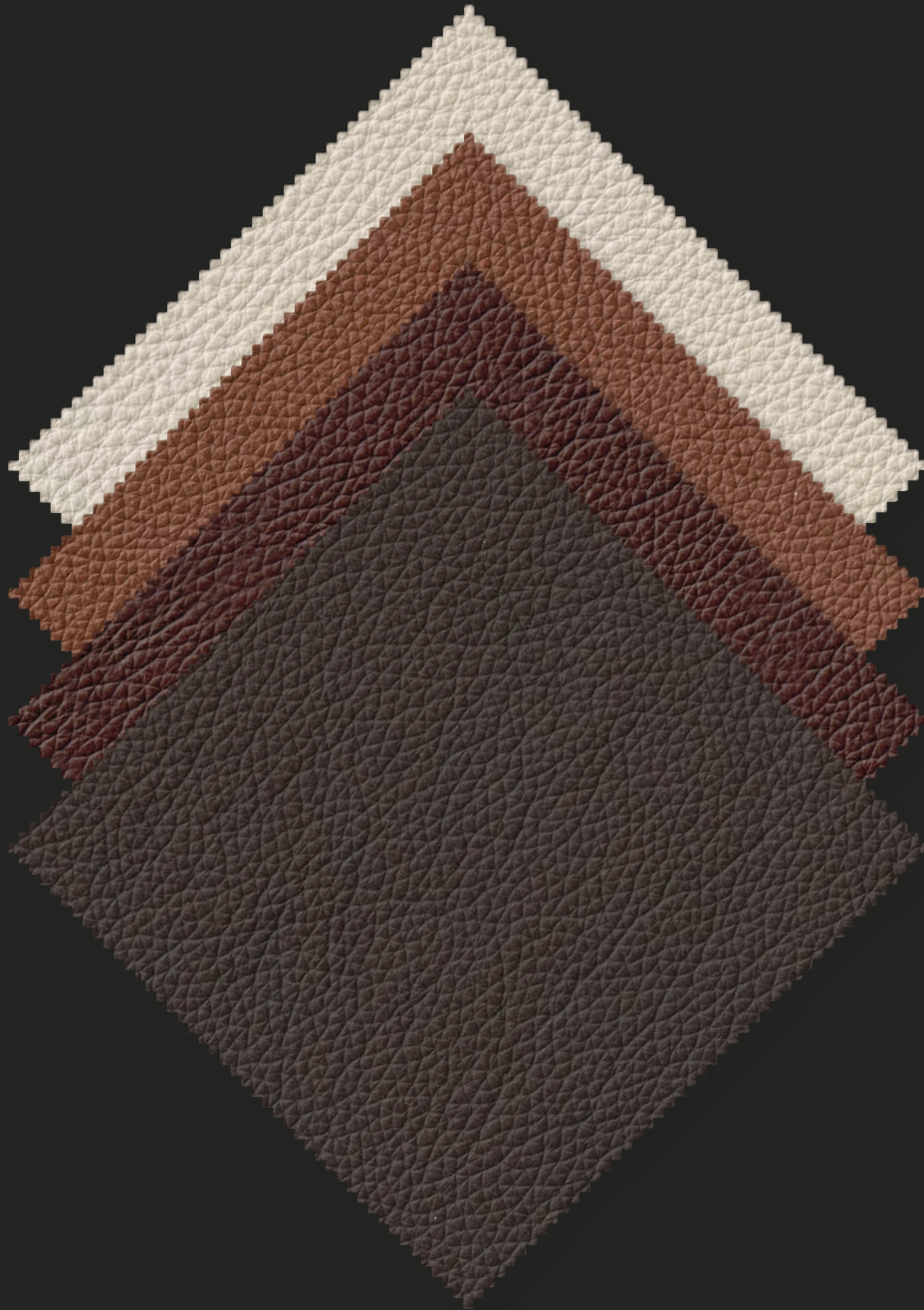
Application: contract upholstered furniture

Colour: little difference may occur

Category: ↳ Top



Article: Pelle, Leather



Article: Pelle, Leather



Origine animale: pelle bovina
Provenienza: Europa
Tipo di concia: ai sali di cromo

Tipo di tintura: all'anilina
passante in botte
Tipo di finizione: pigmentata
Tipologia: fiore corretto

Origin: bovine leather
Place of origin: Europe
Tannage: chromium salt

Dyeing: through dyeing aniline
Finishing: pigmented
Typology: corrected grain

Test

- Solidità alla luce: 6, UNI EN ISO 105-B02
- Resistenza alla fiamma: EN 1021-1 (cigarette test), EN 1021-2 (match test)
- Conforme alla normativa REACH
- Certificazione ISO 9001:2008
- Leather from Italy – Full Cycle UNI 11239
- Carbon Footprint of product
- ISO 14067/CD2
- Environmental product declaration
- ISO 14025
- Der Blaue Engel RAL – UZ 148
- Golden M RAL – GZ430

Manutenzione: spolverare con un panno morbido ed asciutto,
evitare la luce diretta del sole, evitare l'esposizione a fonti di calore

Colore: possono riscontrarsi lievi differenze

Test

- Lightfastness: 6, UNI EN ISO 105-B02
- Flammability: EN 1021-1 (cigarette test), EN 1021-2 (match test)
- Comply to REACH regulation
- Certification ISO 9001:2008
- Leather from Italy – Full Cycle UNI 11239
- Carbon Footprint of product
- ISO 14067/CD2
- Environmental product declaration
- ISO 14025
- Der Blaue Engel RAL – UZ 148
- Golden M RAL – GZ430

Maintenance: dust with a soft and dry cloth, avoid placing leather
near direct sun, keep the leather away from heat sources

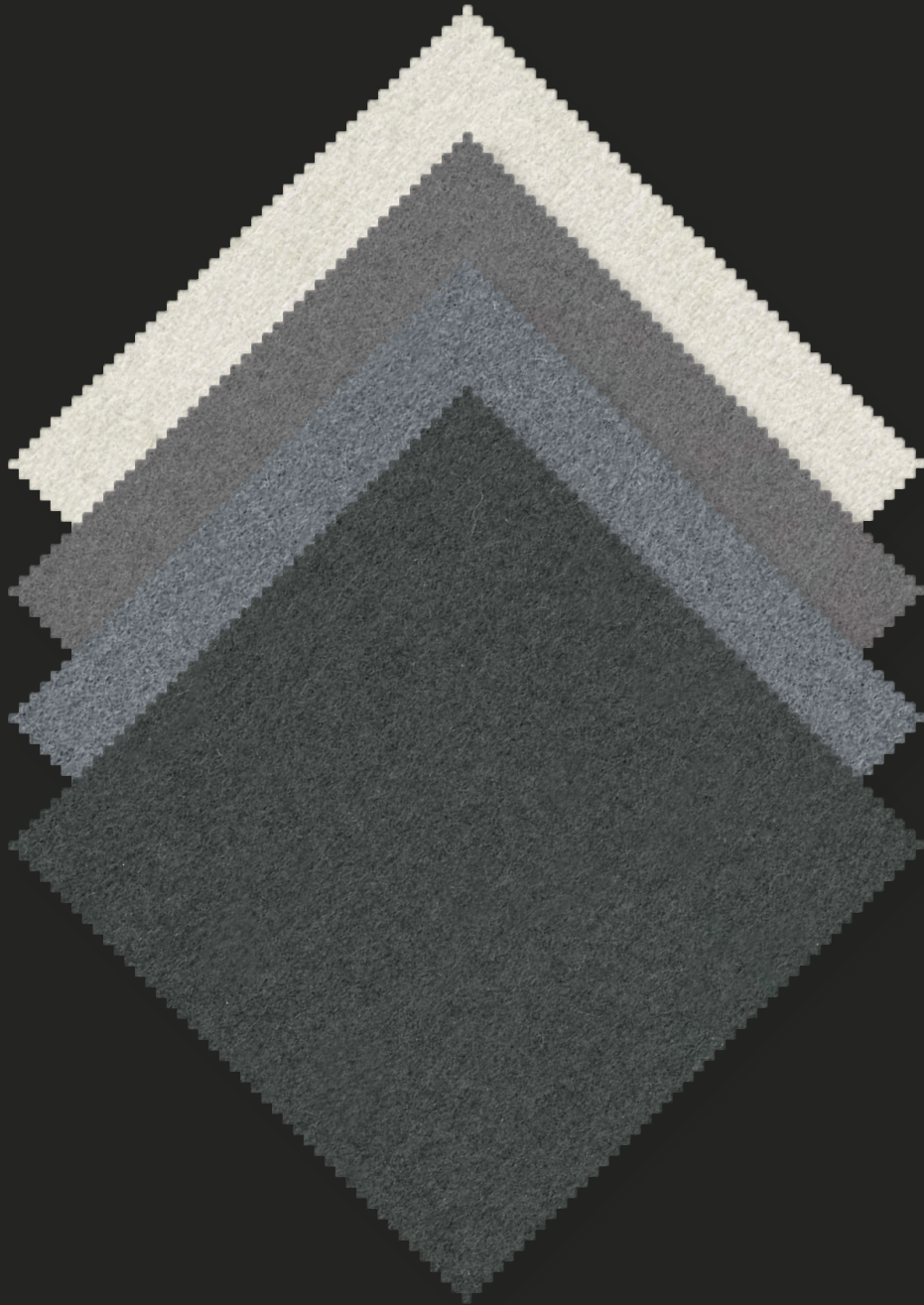
Colour: little difference may occur



Category: ↳ Pelle, Leather



Article: Divina



Category: ↳ Pelle Super, Super Leather





Composizione: 100% Wv

Test

- Solidità alla luce: 5/6, ISO 105-B02
- Resistenza alla fiamma: AS/NZS 1530.3, BS 5852 Crib 5, BS 5852 part 1, BS 5867 part 2 type B, DIN 4102 B2, EN 1021-1/2, EN 13501, C-s1 d0 glued, NF D 60 013, NFPA 260, ONORM b1/q1, UNI 9175 1IM, US Cal. Tech. Bull 117
- Navale: IMO FTP Code 2010 Part 8
- Acustico: test acustico flusso d'aria, EN 29053
- Test assorbimento acustico, ISO 354
- Pilling: 3, BS EN ISO 12945:2000

Martindale: 45.000 cicli, BS EN ISO 12947-1999

Lavaggio: lavaggio a secco

Applicazioni: rivestimento per imbottito contract

Colore: possono riscontrarsi lievi differenze

EU Ecolabel "The Flower"

Composition: 100% Wv

Test

- Lightfastness: 5/6, ISO 105-B02
- Flammability: AS/NZS 1530.3, BS 5852 Crib 5, BS 5852 part 1, BS 5867 part 2 type B, DIN 4102 B2, EN 1021-1/2, EN 13501, C-s1 d0 glued, NFD60013, NFPA 260, ONORM b1/q1, UNI 9175 1IM, US Cal. Tech. Bull 117
- Nautical: IMO FTP Code 2010 Part 8
- Acoustic: acoustic test air flow resistance, EN 29053
- Acoustic test sound absorption, ISO 354
- Pilling 3: BS EN ISO 12945:2000

Martindale: 45.000 cycles, BS EN ISO 12947-1999

Washing: dry cleaning

Application: contract upholstered furniture

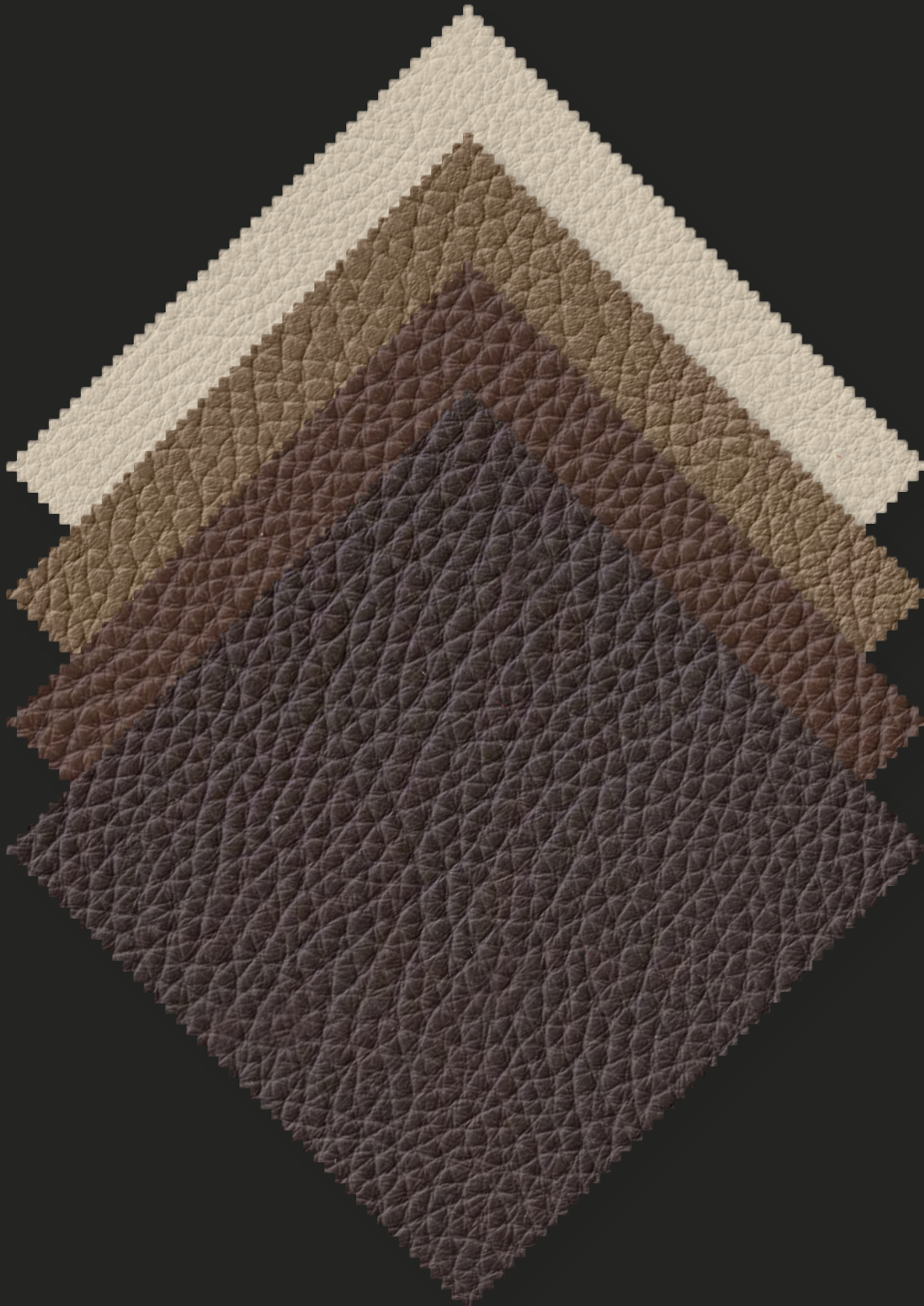
Colour: little difference may occur

EU Ecolabel "The Flower"

Category: ↳ Pelle Super, Super Leather



Article: Pelle Super, Super Leather



Category: ↳ Pelle Super, Super Leather



Article: Pelle Super, Super Leather



Origine animale: pelle bovina
Provenienza: Europa
Tipo di concia: ai sali di cromo

Tipo di tintura: all'anilina
passante in botte
Tipo di finizione: leggermente
pigmentata
Tipologia: pieno fiore

Origin: bovine leather
Place of origin: Europe
Tannage: chromium salt

Dyeing: through dyeing aniline
Finishing: lightly pigmented
Typology: full grain

Test

- Solidità alla luce: 6, UNI EN ISO 105-B02
- Resistenza alla fiamma: EN 1021-1 (cigarette test), EN 1021-2 (match test)
- Conforme alla normativa REACH
- Certificazione ISO 9001:2008
- Leather from Italy – Full Cycle UNI 11239
- Carbon Footprint of product
- ISO 14067/CD2
- Environmental product declaration
- ISO 14025
- Der Blaue Engel RAL – UZ 148
- Golden M RAL – GZ430

Manutenzione: spolverare con un panno morbido ed asciutto,
evitare la luce diretta del sole, evitare l'esposizione a fonti di calore

Colore: possono riscontrarsi lievi differenze

Test

- Lightfastness: 6, UNI EN ISO 105-B02
- Flammability: EN 1021-1 (cigarette test), EN 1021-2 (match test)
- Comply to REACH regulation
- Certification ISO 9001:2008
- Leather from Italy – Full Cycle UNI 11239
- Carbon Footprint of product
- ISO 14067/CD2
- Environmental product declaration
- ISO 14025
- Der Blaue Engel RAL – UZ 148
- Golden M RAL – GZ430

Maintenance: dust with a soft and dry cloth, avoid placing leather
near direct sun, keep the leather away from heat sources

Colour: little difference may occur



Category: ↳ Pelle Super, Super Leather



Article: Ricinus



Category: ↳ Pelle Super, Super Leather



Article: Ricinus



01



02



03



04

Composizione: 42% Wo, 33% Cv, 24% Co, 1% Pa

Test

- Solidità alla luce: 6-7, ISO 105-B02
- Resistenza alla fiamma: BS 5852 part 1 : 1979 source 0 cigarette, BS 5852 part 1 : 1979 source 1 match, BS 5852 : 2006 ignition source 5, BS 5867 : part 2 type B, 2008
- Pilling: 4/5 - 5000 giri, EN ISO 12945

Martindale: 40.000 cicli, UNI EN ISO 12497-2

Lavaggio: lavaggio a secco

Applicazioni: rivestimento per imbottito contract/home

Colore: possono riscontrarsi lievi differenze

Composition: 42% Wo, 33% Cv, 24% Co, 1% Pa

Test

- Lightfastness: 6-7, ISO 105-B02
- Flammability: BS 5852 part 1 : 1979 source 0 cigarette, BS 5852 part 1 : 1979 source 1 match, BS 5852 : 2006 ignition source 5, BS 5867 : part 2 type B, 2008
- Pilling: 4/5 - 5000 rubs, EN ISO 1294

Martindale: 40.000 cycles, UNI EN ISO 12497-2

Washing: dry cleaning

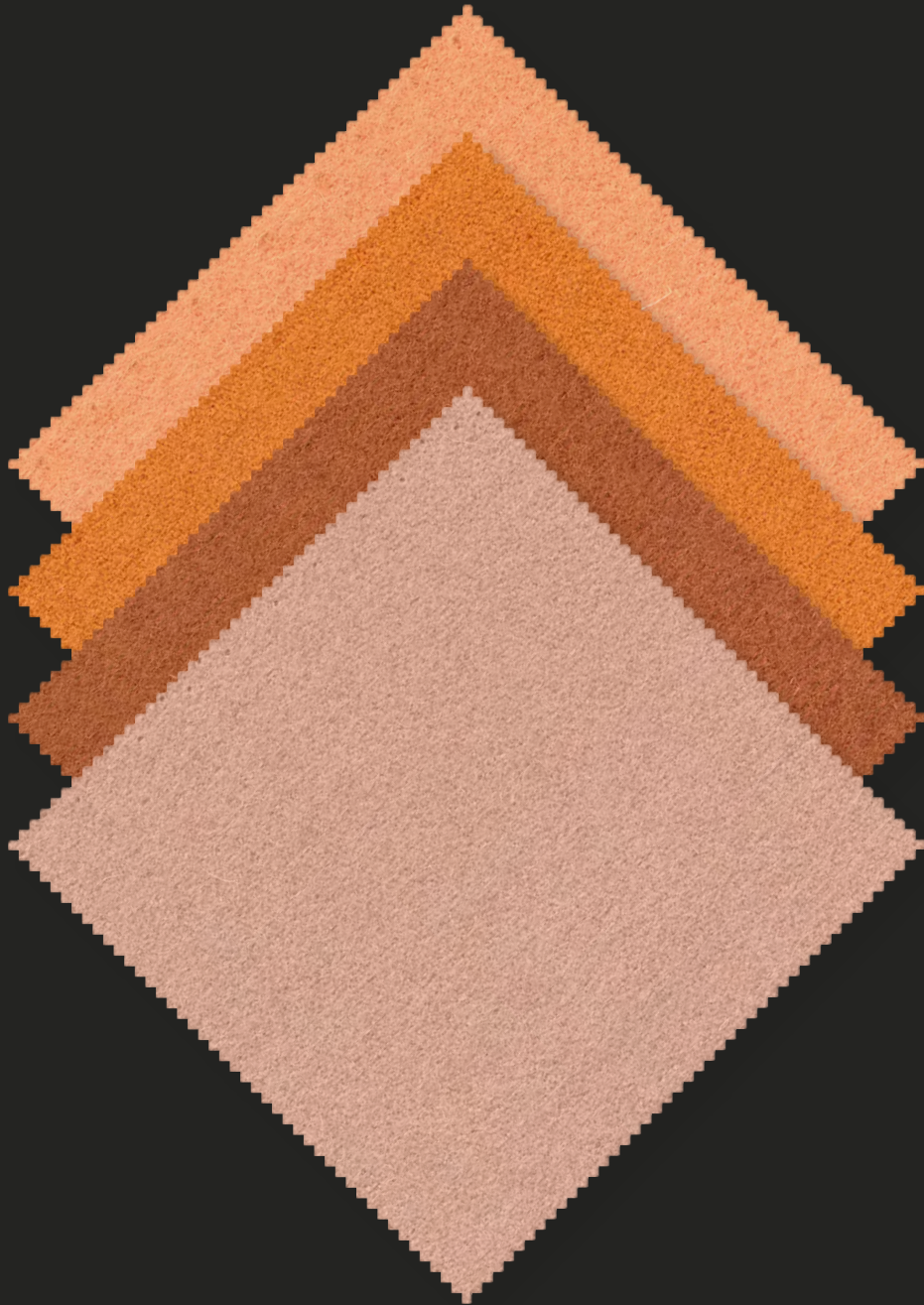
Application: contract and home upholstered furniture

Colour: little difference may occur

Category: ↳ Pelle Super, Super Leather



Article: Thuya



Category: ↳ Pelle Super, Super Leather



Composizione: 96% Nw, 4% Ny

Test

- Solidità alla luce: 6-7, ISO 105-B02
- Resistenza alla fiamma: BS 5852 part 1, DIN 4102 B2, EN 1021-1/2, NF D 60 013, UNI 9175 1IM, US Cal. Tech. Bull 117, AS/NZS 3837 class 2
- Navale: IMO FTP Code 2010 Part 8
- Acustico: test assorbimento acustico, ISO 354
- Pilling: 3/4, EN ISO 12945-2

Martindale: 45.000 cicli, UNI EN ISO 12497-2

Lavaggio: lavaggio a secco

Applicazioni: rivestimento per imbottito contract e home

Colore: possono riscontrarsi lievi differenze

EU Ecolabel "The Flower"

Composition: 96% Nw, 4% Ny

Test

- Lightfastness: 6-7, ISO 105-B02
- Flammability: BS 5852 part 1, DIN 4102 B2, EN 1021-1/2, NF D 60 013, UNI 9175 1IM, US Cal. Tech. Bull 117, AS/NZS 3837 class 2
- Nautical: IMO FTP Code 2010 Part 8
- Acoustic: acoustic test sound absorption, ISO 354
- Pilling: 3/4, EN ISO 12945-2

Martindale: 45.000 cycles, UNI EN ISO 12497-2

Washing: dry cleaning

Application: contract and home upholstered furniture

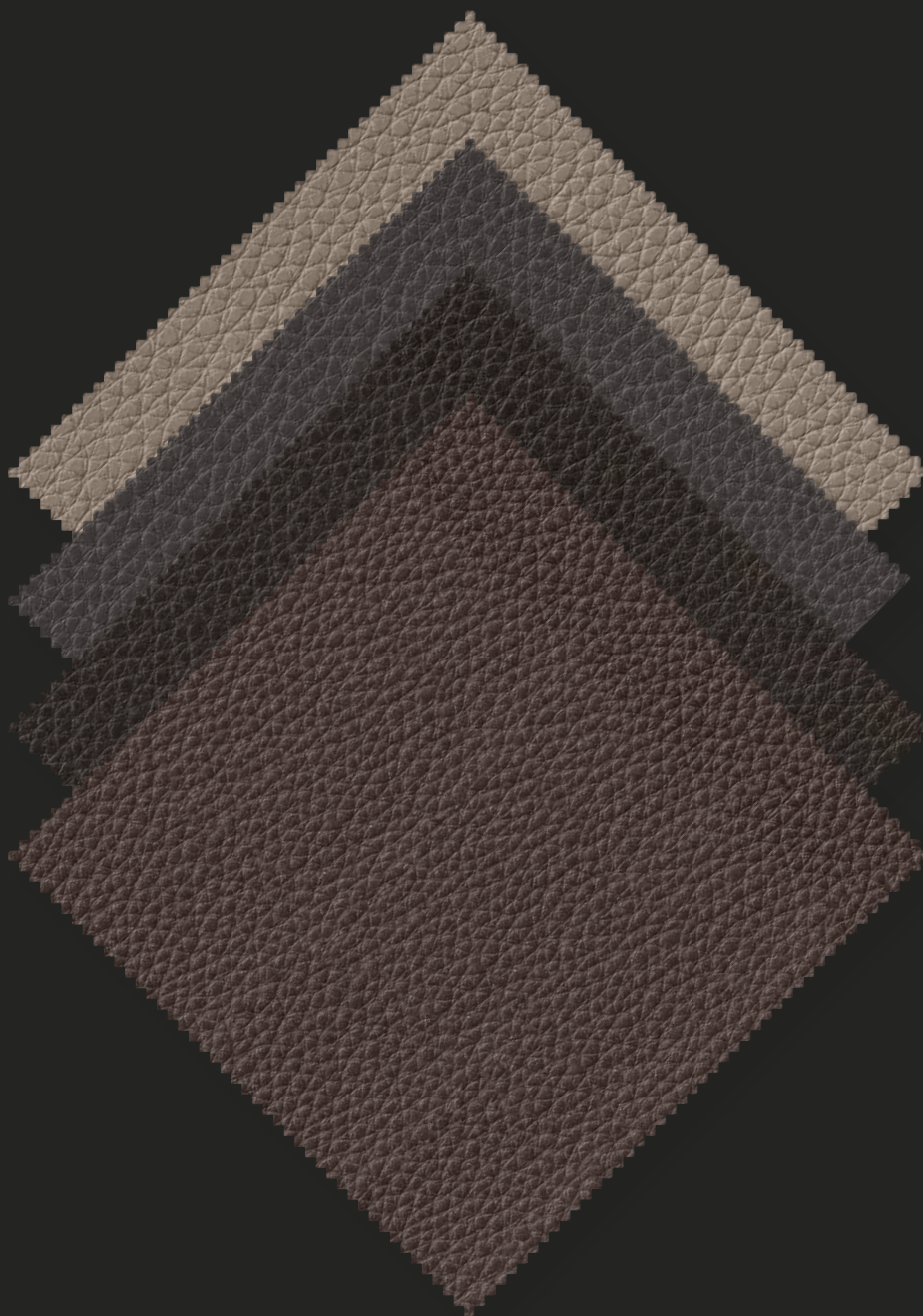
Colour: little difference may occur

EU Ecolabel "The Flower"

Category: ↳ Pelle Super, Super Leather



Article: Fiore



Category: ↳ Pelle Anilina, Aniline Leather



Article: Fiore



Origine: pelle bovina
 Provenienza: Europa
 Tipo di concia: ai sali di cromo

Tipo di tintura: all'anilina
 passante in botte
 Tipo di finizione: semi anilina

Test
 • Solidità alla luce: 4, UNI EN ISO 105-B02
 • Resistenza alla fiamma: EN 1021-1 and 2,
 BS 5852 part 1 (source 0 and 1), CALIFORNIA TB117:2013

Manutenzione: spolverare con un panno morbido ed asciutto,
 evitare la luce diretta del sole, evitare l'esposizione a fonti di calore.

Colore: possono riscontrarsi lievi differenze

Origin: bovine leather
 Place of origin: Europe
 Tannage: chromium salt

Dyeing: through dyeing aniline
 Finishing: semi - aniline

Test
 • Lightfastness: 4, UNI EN ISO 105-B02
 • Flammability: EN 1021-1 and 2,
 BS 5852 part 1 (source 0 and 1), CALIFORNIA TB117:2013

Maintenance: dust with a soft and dry cloth, avoid placing leather
 near direct sun, keep the leather away from heat sources

Colour: little difference may occur

Category: ↳ Pelle Anilina, Aniline Leather



Article: Pelle Anilina, Aniline Leather



Category: ↳ Pelle Anilina, Aniline Leather



Article: Pelle Anilina, Aniline Leather



01

02

03



04

05

Origine animale: pelle bovina
Provenienza: Europa
Tipo di concia: ai sali di cromo

Tipo di tintura: all'anilina
passante in botte
Tipo di finizione: anilina
Tipologia: pieno fiore

Origin: bovine leather
Place of origin: Europe
Tannage: chromium salt

Dyeing: through dyeing aniline
Finishing: aniline
Typology: full grain

Test

- Solidità alla luce: 3, UNI EN ISO 105-B02
- Resistenza alla fiamma: EN 1021-1 (cigarette test), EN 1021-2 (match test)
- Conforme alla normativa REACH
- Certificazione ISO 9001:2008
- Leather from Italy – Full Cycle UNI 11239
- Carbon Footprint of product ISO 14067/CD2
- Environmental product declaration ISO 14025
- Der Blaue Engel RAL – UZ 148
- Golden M RAL – GZ430

Test

- Lightfastness: 3, UNI EN ISO 105-B02
- Flammability: EN 1021-1 (cigarette test), EN 1021-2 (match test)
- Comply to REACH regulation
- Certification ISO 9001:2008
- Leather from Italy – Full Cycle UNI 11239
- Carbon Footprint of product ISO 14067/CD2
- Environmental product declaration ISO 14025
- Der Blaue Engel RAL – UZ 148
- Golden M RAL – GZ430

Manutenzione: spolverare con un panno morbido ed asciutto,
evitare la luce diretta del sole, evitare l'esposizione a fonti di calore

Maintenance: dust with a soft and dry cloth, avoid placing leather
near direct sun, keep the leather away from heat sources

Pulizia: spolverare con un panno morbido e asciutto

Cleaning: dust with a soft and dry cloth



Category: ↳ Pelle Anilina, Aniline Leather



Tacchini Dress Code: Textile and Leather Collection