

FRITZ HANSEN

DESIGN COLLECTION

FURNITURE LIGHTING
ACCESSORIES
FURNITURE LIGHTING
ACCESSORIES
FURNITURE LIGHTING

FURNITURE LIGHTING
ACCESSORIES
FURNITURE LIGHTING
ACCESSORIES
FURNITURE LIGHTING

EXTRAORDINARY DESIGN SINCE 1872

Welcome to a world of design, craftsmanship and beauty. Here, you'll find more than 100 years of Danish design tradition and collaborations with visionary architects, designers and artists from around the world.

Welcome to Fritz Hansen.



Since 1872, Fritz Hansen has been creating extraordinary designs that transform the everyday into something special. By continuously pushing boundaries, our products shape the world of design enthusiasts who seek inspiration, intrigue and surprise.

ELEVATE THE EVERYDAY

Founded in Denmark in 1872, Fritz Hansen is a global leader in furniture, lighting and accessory design and production. Driven by a passion for design, beauty and craftsmanship, the company embodies a modern, Nordic lifestyle and collaborates with visionary artists, designers and architects from around the world. Collaborators have included Arne Jacobsen, Cecilie Manz, Hans J. Wegner, Piero Lissoni and Poul Kjærholm, among others.

Today Fritz Hansen designs are sold in more than 85 countries through 2,000 points of sale, including flagship stores in Copenhagen, Milan, New York, San Francisco and Tokyo. The company employs 260 people worldwide and maintains its headquarters north of Copenhagen, serving design-passionate customers in professional and residential projects.



Leather **Series 7™** chair by Arne Jacobsen with swivel base and **Pluralis™** table by Kasper Salto, with **Planner™ Shelving** by Paul McCobb and **KAISER idell™** table lamp by Christian Dell.



PK61™ coffee table designed by Poul Kjærholm in satin-polished stainless steel and glass.

PK80™ daybed designed by Poul Kjærholm in canvas.



PK25™ chair by Poul Kjærholm with natural flag halyard.



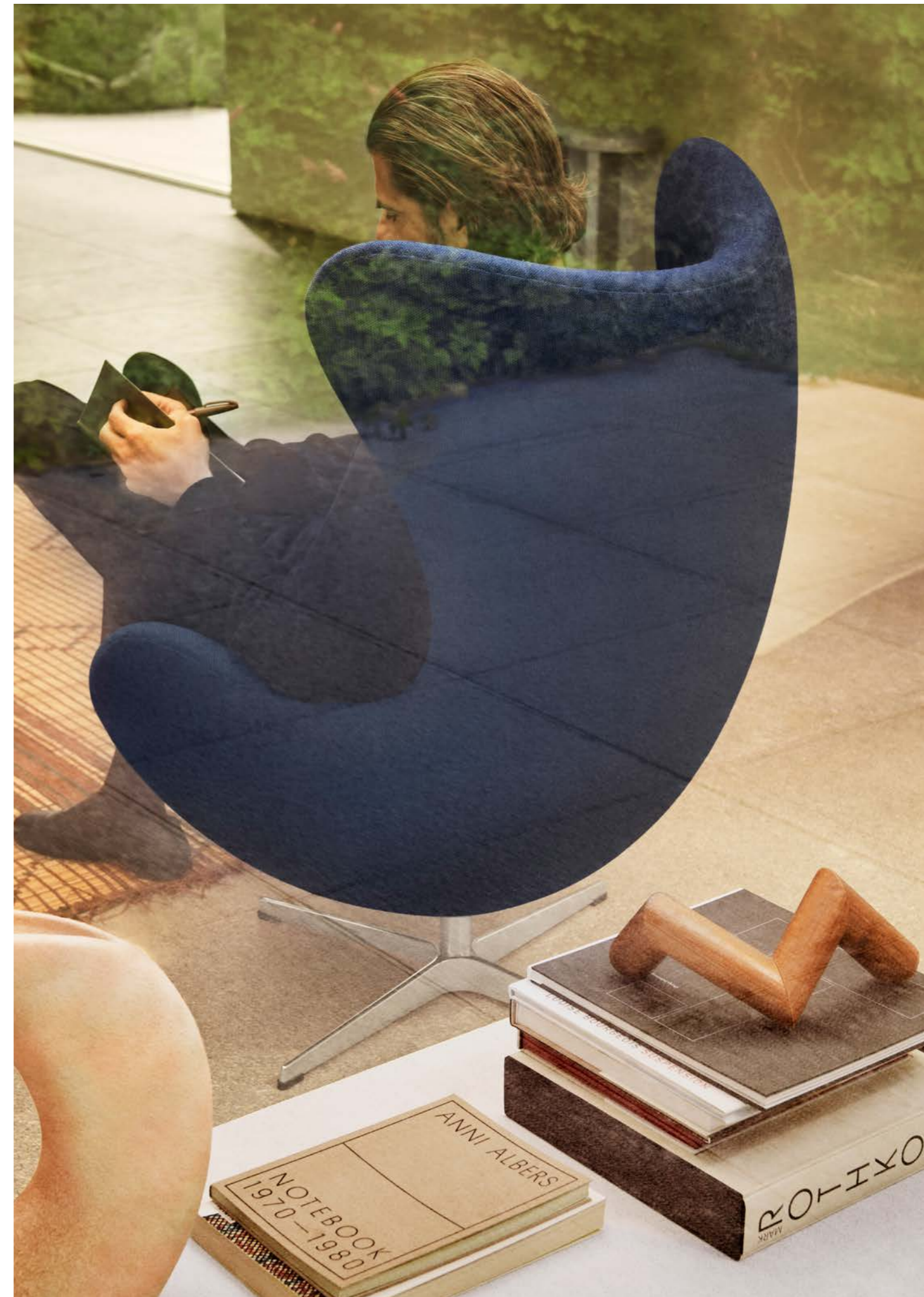
A quiet interior: **PK80™** daybed, **PK61™** coffee table, **PK25™** chair and **PK91™** folding stool, all by Poul Kjærholm. **Planner™ Shelving** by Paul McCobb, a **KAISER idell™** floor lamp and **Ikebana** vase by Jaime Hayon also shown.

BELIEVE IN BEAUTY

Hand stitches finish every Egg™ and Swan™ chair. The technique is a unique talent that is learned and passed on through Fritz Hansen craftsmen. This attention to detail and precise workmanship are essential to the original Arne Jacobsen designs. Human-touch is further reflected in the seat designs, which contain no straight line or sharp angles.



The Swan™ and Egg™ by Arne Jacobsen add organic curves to an interior design.





KAISER idell™ Luxus by Christian Dell in brass and matt black is a bold pairing of reflective warmth and cool darkness. Natural patina on brass will occur.

COME TOGETHER

Today dining tables are used as work tables, places for treasured objects and meals together. Fritz Hansen's Table Series marries versatile design with high quality craftsmanship, so you can create the ideal dining/working/meeting table with plenty of options to choose from.



A **Super-Elliptical™** table designed by Piet Hein and Bruno Mathsson with a Fenix™ laminate top and matt, polished aluminium edge.

Series 7™ chairs designed by Arne Jacobsen in Chevalier Orange and white **Super-Elliptical™** table under **Caravaggio™** Opal pendant by Cecilie Manz.

INSPIRED BY TRADITION

'Ikebana' is Japanese for making flowers live and describes the art of arranging flowers. Ikebana vases by Jamie Hayon are designed to present individual flowers from stem to crown, in keeping with the Japanese tradition of honouring every flower's beauty.



Ikebana vases by Jaime Hayon come in three variants.



Opposite: Odds and ends hide behind a living room door as a **China Chair™** designed by Hans J. Wegner sneaks into the frame.





The **Fred™** lounge chair is designed by Jaime Hayon and assembled by hand. The design's wide arms ease relaxation.



THE ART OF LOUNGING

'Comfort was a key factor, as was the combination of the best of Danish design craftsmanship and modern technology,' says Jaime Hayon about the new **Fred™** lounge chair, featured here in clear lacquered oak.



A 50th Anniversary Edition of Arne Jacobsen's luxurious **Lily™** chair in Walnut catches the sunlight in Tokyo.

LUXURY LIVES ON



PK9™ and **PK54™**, designed by Poul Kjærholm under an **Orient™** pendant by Jo Hammerborg.

Luxury and longevity go hand in hand. Extraordinary design guarantees that expert craftsmanship lives on, offering beauty and function for decades to come.



ROOM FOR IMAGINATION





HONOUR EVERY FLOWER



Ikeru Low vase designed by Jaime Hayon.

Ikeru vases by Jaime Hayon are simple designs for flower arrangements, inspired by the Japanese art of 'Ikebana'. Overall, the designs are transparent and direct in their intention to honour every flower placed within them. Ikeru is an invitation to appreciate nature or to create an arrangement to share.



Orient™ pendant designed by Jo Hammerborg, **Essay™** table by Cecilie Manz, and **Series 7™** seating by Arne Jacobsen.



Ant™ chairs by Arne Jacobsen in pale pink and Deco Silhouette print, **PK54™** table with expansion ring (**PK54A™**) by Poul Kjærholm and **Concert™** pendant by Jørn Utzon.





Coat Tree™ Wall
by Sidse Werner in dark blue.



PM-02 table lamp
by Paul McCobb.



Caravaggio™ Read table lamp
by Cecilie Manz in black.



Wall Mirror by Paul McCobb with
white Carrara marble shelves.

BEAUTIFUL LINES

Wave desk organizer
by Hiromichi Konno.



Ikeru High vase
by Jaime Hayon.

Magazine Holder
by Paul McCobb.





Essay™ designed by Cecilie Manz with **Little Giraffe™** seating in leather by Arne Jacobsen.

An eclectic interior centres around the Essay™ table and Little Giraffe™ seating. Both Fritz Hansen pieces are solid yet light designs that work beautifully in old or new architecture.



Swan Sofa™ and **Swan™** chair designed by Arne Jacobsen with **Join™** coffee table designed by Fritz Hansen and **Pouf** designed by Cecilie Manz.



Suspence™ pendant light by GamFratesi and **N01™** chairs in oak by nendo.



Planner™ Shelving by Paul McCobb.

Leather **Egg™** chair
by Arne Jacobsen and
Fritz Hansen-designed
Tray Table.



Egg™ and matching footstool by Arne Jacobsen, handmade **Dots Rug** designed
by Cecilie Manz and **Caravaggio™ Read** floor lamp, also by Cecilie Manz.



The **Tray Table** was originally
produced by Fritz Hansen craftsmen
as a Christmas gift for colleagues.



Cross-Plex™ lamps by Bodil Kjær.

SOFT AMBIENCE

Pleasant interior light shapes mood, improves productivity, and conserves energy. Scandinavian winters are long and dark; summer days are long and bright. As such, Fritz Hansen's collection of timeless lighting design focuses on overall impact. Turned on or left off, indoor lighting should be beautiful.

Brass **Silhuet** pendants by Jo Hammerborg and **Vico Duo** seating.





AJ Trolley by Arne Jacobsen.



A **Ro™** footstool is the perfect place to put your feet up.



Ro™ chair and footstool designed by Jaime Hayon, a **KAISER idell™** floor lamp with a **Rug** designed by Cecilie Manz underfoot.

Fritz Hansen leather upholstery is fine European rawhide. Leather pieces last for generations, gaining character and softness over time.



Lissoni Sofa™ by Pierro Lissoni in leather.



Oksen™ by Arne Jacobsen in walnut, Grace leather.



Grand Prix™ seating designed by Arne Jacobsen and **Calabash™** pendants in gold chrome, designed by Komplot Design.



The **Alphabet Sofa™ Series** by Piero Lissoni is flexible. Arrange pieces for a unique space.





Fri™ chair by Jaime Hayon, Lune™ sofa by Jaime Hayon and KAISER idell™ floor lamp.

Christianshavn™ textiles are offered in a palette of twenty-six enchanting colours, from subtle tones to bold, bright colours.





DAILY DELIGHT





Geo #1 & Geo #2
by Jaime Hayon.

Candleholder in brass,
designed by Jaime Hayon.



Pouf with leather piping,
designed by Cecilie Manz.

Tray Stack #4 designed by
Wednesday Architecture.



THE LITTLE THINGS

At home and work accessories add beauty and life to our interiors. Fritz Hansen Accessories always marry form and function with high quality craftsmanship.



Classic Throw on the **PK63™** coffee table
by Poul Kjærholm.

High Dot™ in leather,
designed by Arne Jacobsen.

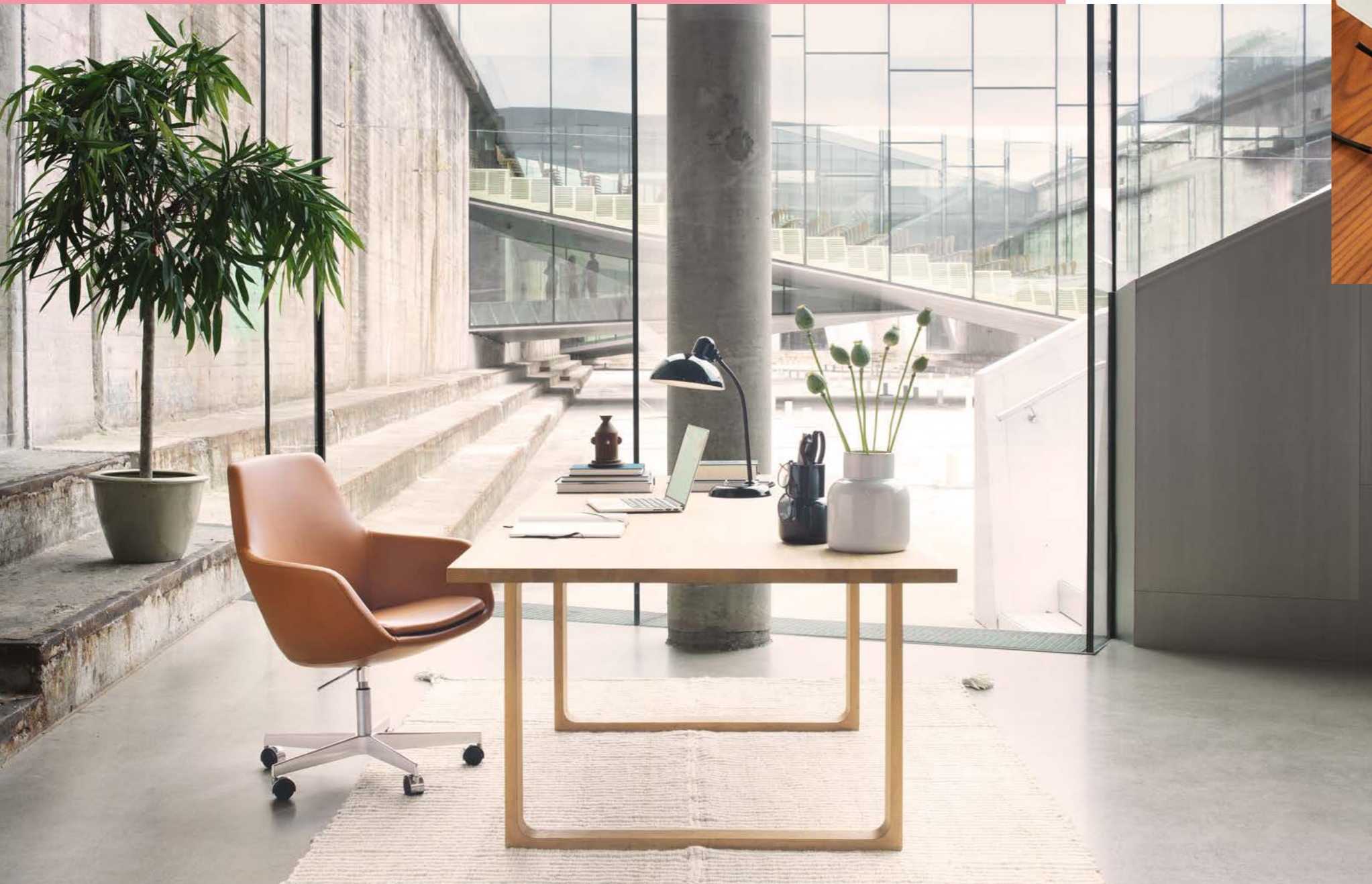


OFFICE HOURS

The right chair can assist focus, improve posture, and make office hours more productive ... and pleasant.

Little Giraffe™ chair by Arne Jacobsen at the **Essay™** table by Cecilie Manz, with **KAISER idell™** table lamp and Fritz Hansen Accessories.

Leather **Buckets** by Mia Lagerman on the **Pluralis™** table by Kasper Salto.



Oxford™ Premium chair by Arne Jacobsen.





VIA57™ chairs designed by Bjarke Ingels and KiBiSi,
Tray Table by Fritz Hansen and **Little Friend™** table by Kasper Salto.



N02™ Recycle by nendo with swivel base.

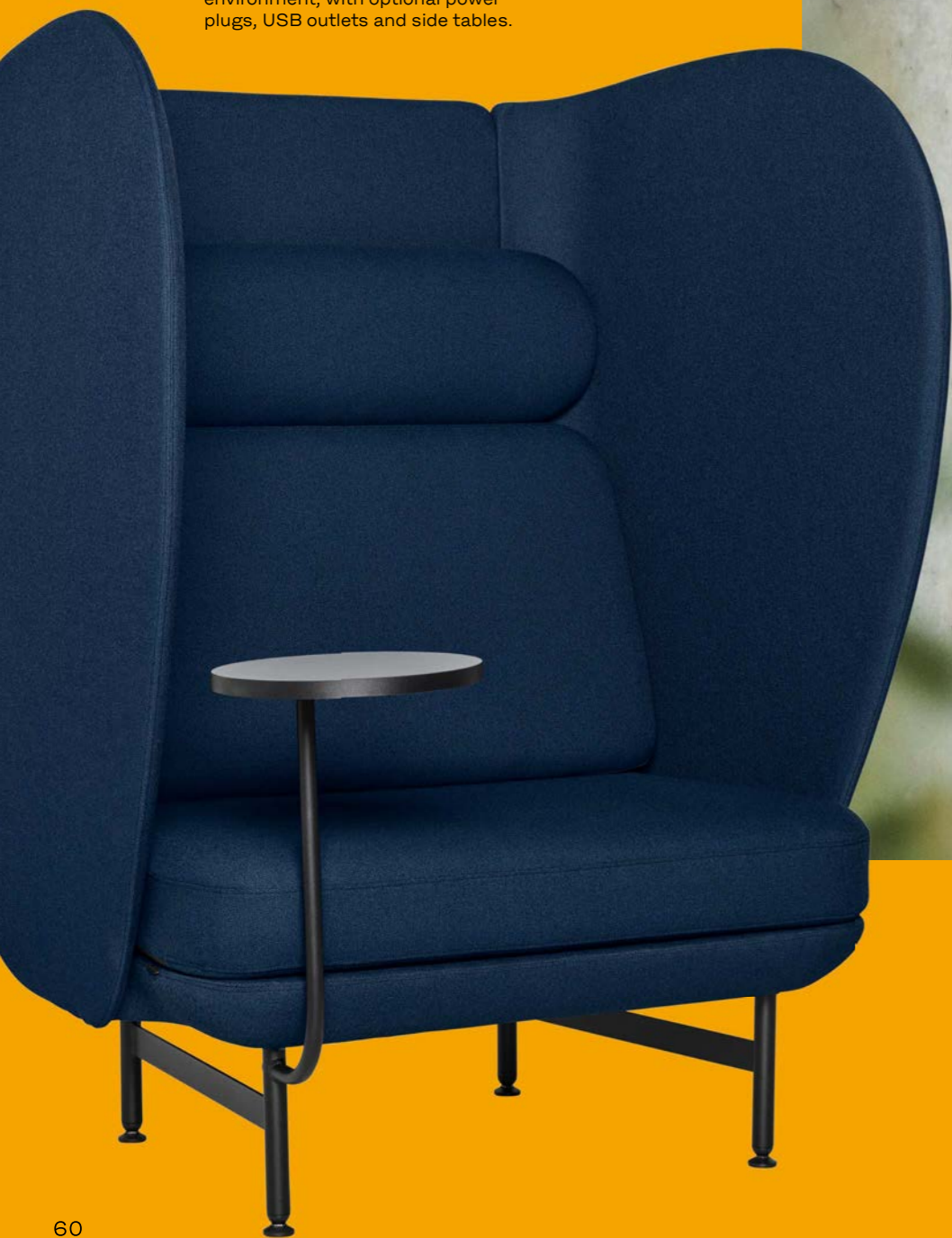
HOUSEHOLD PLASTIC WASTE REDESIGNED

A multi-purpose chair made from recycled plastic household waste that can be recycled once again wherever PP5 plastic bottles are accepted.



The **N02™ Recycle** is Fritz Hansen's first chair made with a circular plastic shell.

Plenum™ one-seater by Jaime Hayon is adjustable for your work environment, with optional power plugs, USB outlets and side tables.



Plenum™ table,
by Jaime Hayon.





Sammen™ chairs by Jaime Hayon have a soft, padded shell for ultimate comfort.

WORLDCLASS DESIGN



Favn™ designed by Jaime Hayon with **Planner™ Coffee Table** by Paul McCobb and **Pouf** by Cecilie Manz.

A good chair is one of life's little luxuries, essential for long visits, enjoying a drink or getting work done. Fritz Hansen seating is tested for quality and comfort, designed with precision to fit beautifully into everyday life and spaces.



Little Friend™ is perfect for a laptop or morning cup of coffee. Easy to move and always useful.



Series 7™ seating by Arne Jacobsen rises to the occasion of a bar or high counter.



High Dot™ bar stools for bar or kitchen, featured here with a red **KAISER idell™** table lamp.

A COFFEE BREAK

Can contentment be designed? What about productivity or happiness? A lot is out of our control but we can set the scene for good conversations, meetings and breaks. A good seat is the first step.



Vico Duo is a stylish veneer stacking chair by Vico Magistretti that is versatile and perfectly suited for agile workspace and hospitality design.

Sky blue **Vico Duo** seating by Vico Magistretti in monochrome colour (special order) with a **Super-Circular™** cafe table from the Fritz Hansen **Table Series**.

PROJECTS

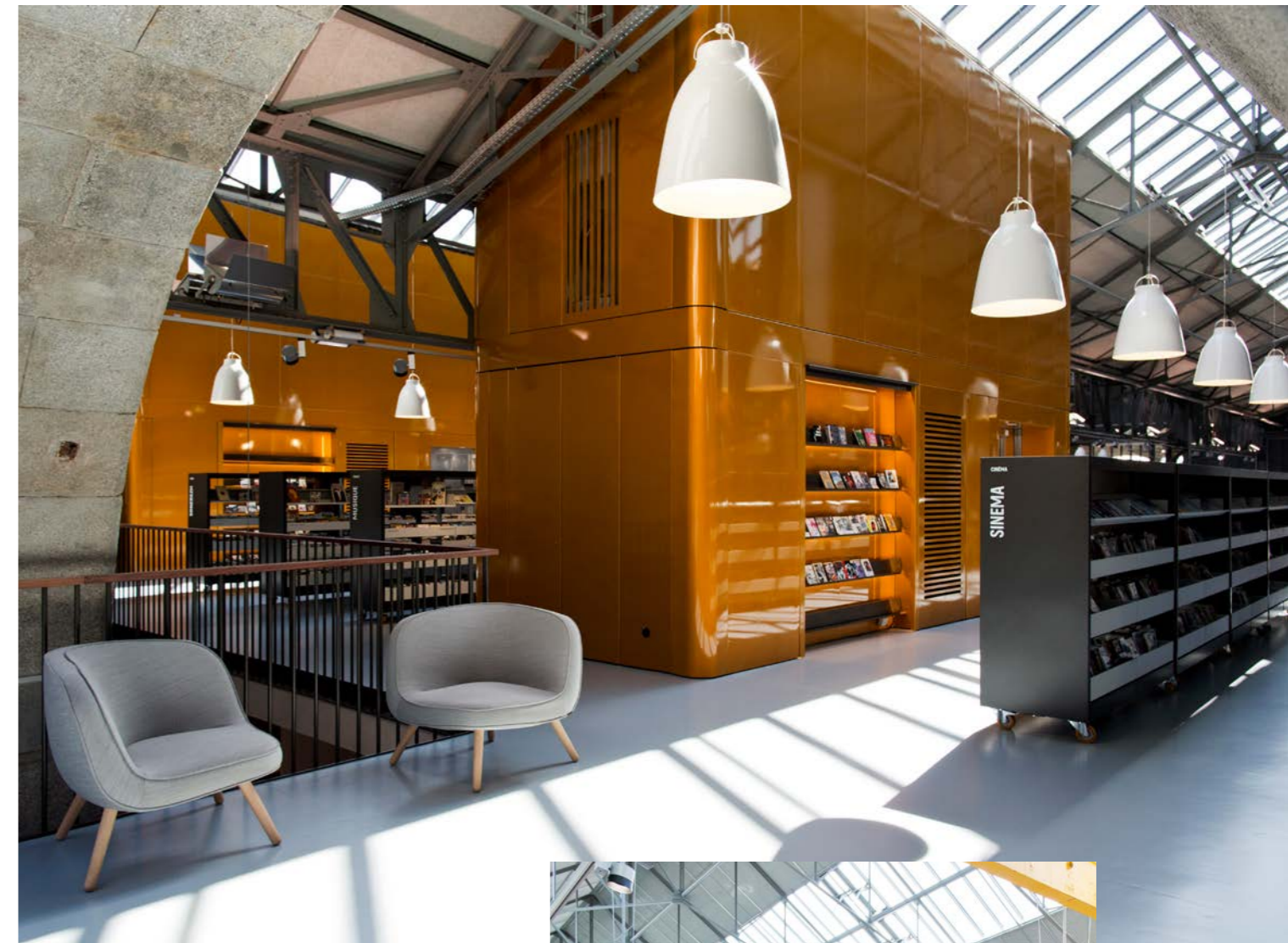
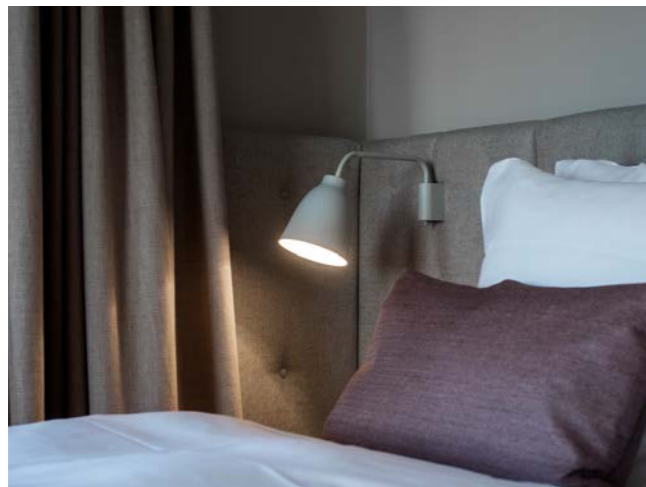


A holistic hospitality design wherein lobby and rooms are closely linked with a clean, Nordic aesthetic.

HOTEL ODEON

Location: Odense, Denmark
 Category: Hospitality
 Areas: Restaurant, Lounge, Rooms
 Architect: Co.designstudio
 (Pernille Arlien-Søborg Henriksen)
 Design: Studio R7B (Barbara Bendix)

Products: Alphabet Sofa™ Series, Swan™, Fri™, Grand Prix™, Sammen™, Series 7™, KAISER idell™, Caravaggio™ Read, Accessories

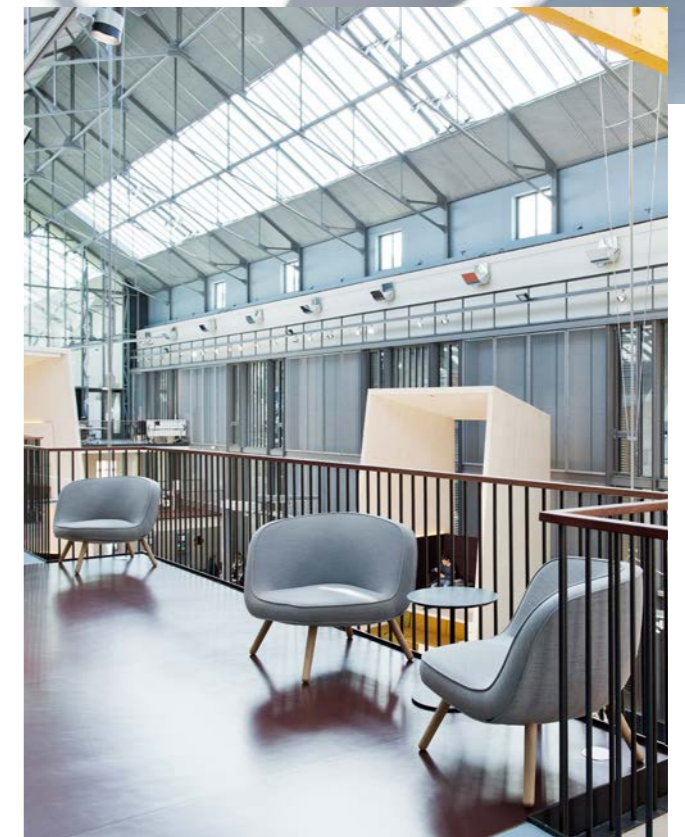


VIA57™ seating and large Caravaggio™ pendants in the Media Library of Capucins.

MEDIA LIBRARY OF CAPUCINS

Location: Brest, France
 Category: Culture
 Areas: Public area, Library
 Architect: Canal (atelier d'architecture)

Products: VIA57™, Caravaggio™



Photos: Thomas Lang



Oxford™ Premium seating by Arne Jacobsen at a large conference table.



Photos: Jens Kirchner

RAG ZOLLVEREIN

Location: Essen, Germany
 Category: Corporate
 Areas: Meeting rooms

Products: Oxford™ Premium

YJY MAIKE CENTRE FLAGSHIP STORE

Location: Xi'an, China
 Category: Culture/Hospitality
 Areas: Public area, Library
 Interior design: Tomoko Ikegai ikg inc.

Products: Swan™, Coffee Table Series



Swan™ seating by Arne Jacobsen mirrors the curves of the central staircase.



Credit: Designer: Tomoko Ikegai ikg inc., Photographer: Nacasa&Partners, Design cooperation: A Factory inc. / Japan Power Media Co, Ltd., Lighting: Sola Associates, Graphic Design: ujidesign.



Books are the focal point in this otherwise white library in Germany. Curtains allow students to use the space different in exam periods.



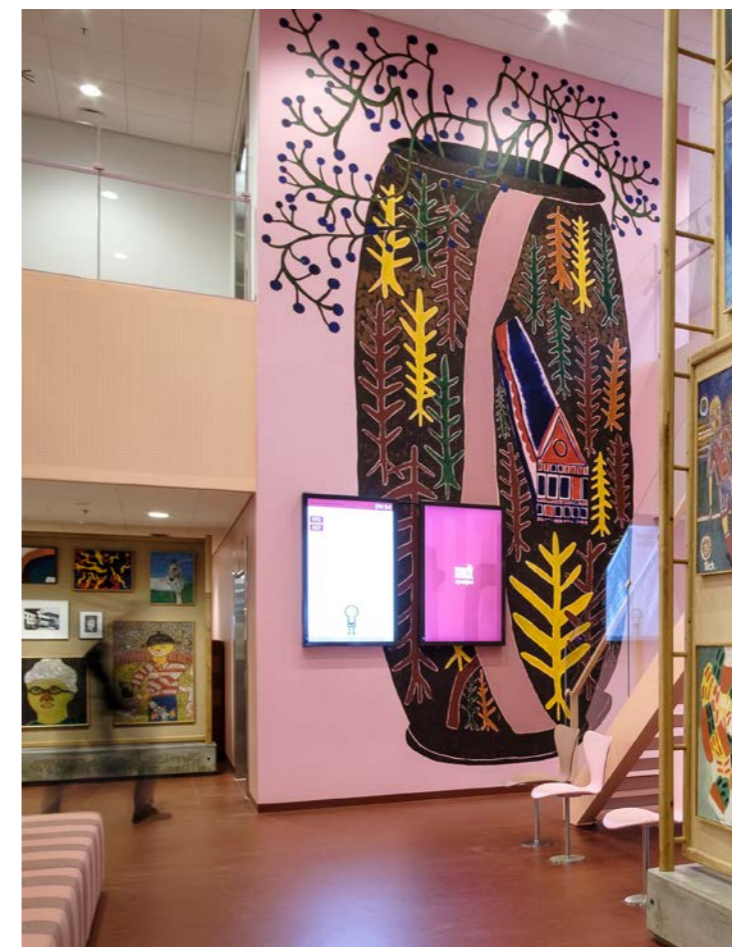
UNIVERSITY LIBRARY FOR FHöV, COLOGNE

Location: Cologne, Germany
 Category: Culture
 Areas: Library
 Architect: Andreas Schüring Architekten BDA
 Products: Drop™

Photos: Andreas Schüring Architekten BDA

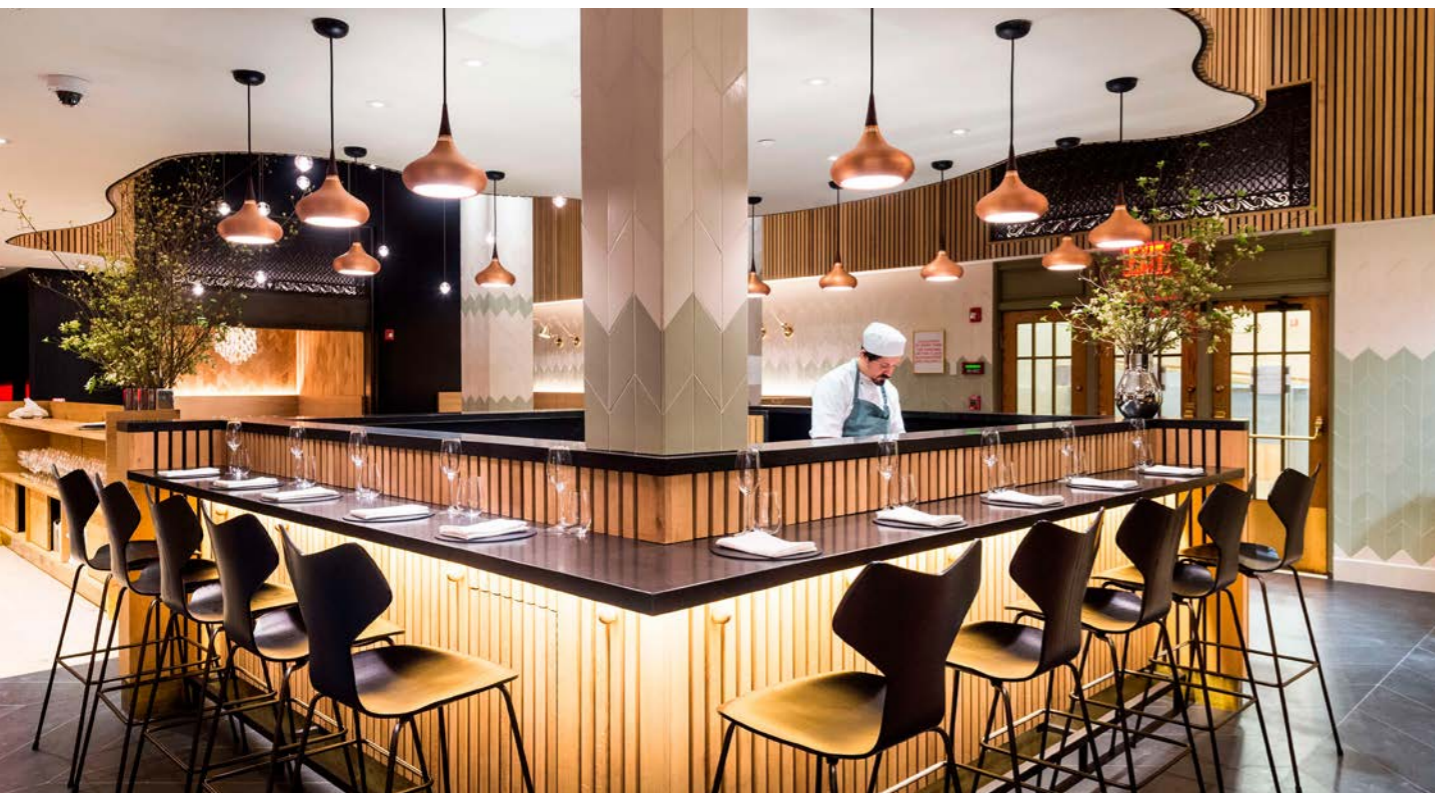
AARHUS UNIVERSITY HOSPITAL, PSYCHIATRY

Location: Aarhus, Denmark
 Category: Healthcare
 Areas: Lounge
 Interior design: Tal Rosenzweig
 Products: Series 7™



A pink interior for calming the mind and nerves. Custom pink Series 7™ chairs in a variety of hues.

Photos: Jesper Voldgaard



AGERN

Location: New York, United States
 Category: Hospitality
 Areas: Restaurant
 Architect: Christina Meyer Bengtsson

Products: Grand Prix™, Orient™



Grand Prix™ seating is geometric, offsetting the wood paneling at the restaurant Agern in New York.



Plenum™ seating in a minimal environment produces character and a sense of privacy and intimacy for focus or conversation.

KNSKB+

Location: Hamburg, Germany
 Category: Corporate
 Areas: Break out area
 Architect: J. Mayer H.
 Interior design: Büro Parat

Products: Plenum™



Photos: Andreas Meichsner

KEUNE HAIRCOSMETIC

Location: Tbilisi, Georgia
Category: Retail/Healthcare
Areas: Clinic

Products: Fri™, Ro™, Favn™,
Series 7™



Fritz Hansen seating by Jaime Hayon and Arne Jacobsen adds quiet charm in soft colours.



OFENHAUS

Location: Augsburg, Germany
Category: Hospitality
Areas: Restaurant & Bar
Architect: Innenarchitektur Büro Kolb

Products: Pot™, Caravaggio™, Series 7™

Pot™ and Series 7™ seating with bold Caravaggio™ pendants add pops of colour in the otherwise industrial space.



Photos: Eckhart Matthäus

PRODUCTS

SERIES 7™

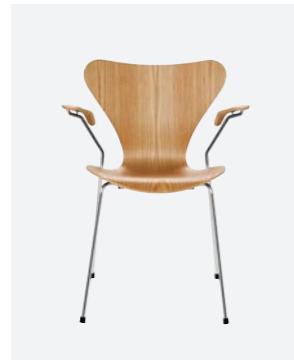
Design: Arne Jacobsen, 1955

The Series 7™ chair is an icon in modern furniture history, designed by Arne Jacobsen in 1955. Its unique shape is timeless and incredibly versatile, displaying character without overpowering the eye. The chair is made from 9 layers of pressure moulded veneer for strength, flexibility and durability despite its slender form. This is the most popular design within Fritz Hansen's chair collection.

Shell: Coloured ash, lacquered and natural veneer or front- and fully upholstered in a wide range of textiles and leather types.
Base: Chromed or powder coated steel (select models).
Accessories: Felt glides, Seat cushion, Linking device etc.



Model: 3107
 Height: 82 cm / 32.2 in
 Seat height: 46 cm / 18.1 in
 Width: 50 cm / 20 in
 Depth: 52 cm / 20.5 in
 Features: Stackable



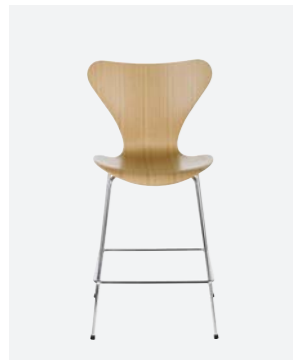
Model: 3207
 Height: 80 cm / 30.9 in
 Seat height: 46 cm / 18.1 in
 Armrest height: 69.5 cm / 27.4 in
 Width: 61 cm / 24 in
 Depth: 52 cm / 20.5 in



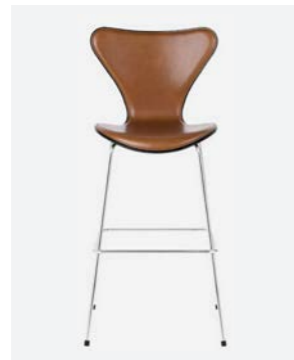
Model: 3117
 Height: 78-90 cm / 30.7-35.4 in
 Seat height: 44-56 cm / 17.3-22 in
 Width: 50 cm / 20 in
 Depth: 52 cm / 20.5 in



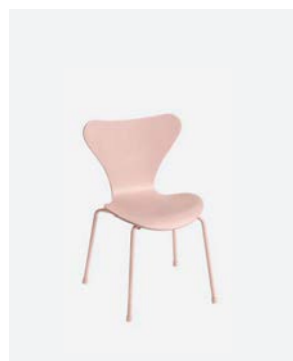
Model: 3217
 Height: 78-90 cm / 30.7-35.4 in
 Seat height: 44-56 cm / 17.3-22 in
 Armrest height: 66-78 cm / 26.4-31.1 in
 Width: 61 cm / 24 in
 Depth: 52 cm / 20.5 in



Model: 3187
 Height: 98 cm / 38.6 in
 Seat height: 64 cm / 25.2 in
 Width: 52 cm / 20.5 in
 Depth: 54 cm / 21.3 in



Model: 3197
 Height: 110 cm / 43.3 in
 Seat height: 76 cm / 29.9 in
 Width: 53 cm / 20.9 in
 Depth: 59 cm / 23.2 in



Model: Children's Chair
 Height: 60 cm / 23.6 in
 Seat height: 34 cm / 13.3 in
 Width: 40 cm / 15.7 in
 Depth: 42 cm / 16.5 in
 Note: Accessories assortment



Model: Junior
 Height: 79 cm / 31.1 in
 Seat height: 52 cm / 20.4 in
 Width: 42 cm / 16.5 in
 Depth: 44 cm / 17.3 in
 Note: Accessories assortment



ANT™

Design: Arne Jacobsen, 1952

The Ant™ chair's visual expression is delicate and artful, much like the curves of a musical instrument. Designed by Arne Jacobsen in 1952, the chair is made from nine layers of pressure moulded veneer. Its elegant shape disguises its remarkable strength and comfort.

Shell: Coloured ash, natural veneer and deco print.
Base: Chromed or powder coated steel (select colours).
Accessories: Felt glides, Linking device.



Model: 3100
 Height: 77 cm / 30.3 in
 Seat height: 44 cm / 17.3 in
 Width: 52 cm / 20.4 in
 Depth: 51 cm / 20 in
 Features: Stackable



Model: 3101
 Height: 81 cm / 31.9 in
 Seat height: 46 cm / 18.1 in
 Width: 52 cm / 20.4 in
 Depth: 48 cm / 18.9 in
 Features: Stackable

GRAND PRIX™

Design: Arne Jacobsen, 1957

The Grand Prix™ chair is a chair with graphic edge. It was introduced at the Designers' Spring Exhibition at the Danish Museum of Art & Design in 1957. Later that year, the chair was displayed at the Triennale in Milan where it received the Grand Prix, the finest distinction of the exhibition. The celebrated chair comes in both a steel or wood base and can be customised through a series of colours, wood types and upholstery.

Shell: Coloured ash and natural veneer (oak and walnut) or front- and fully upholstered in textile and leather.
Base: Chromed and dark brown powder coated steel or wooden legs.
Accessories: Felt glides, Linking device etc.



Model: 3130
 Height: 83 cm / 32.7 in
 Seat height: 46 cm / 18.1 in
 Width: 48 cm / 18.9 in
 Depth: 51 cm / 20.1 in
 Features: Stackable



Model: 4130
 Height: 83 cm / 32.7 in
 Seat height: 46 cm / 18.1 in
 Width: 50 cm / 19.7 in
 Depth: 51 cm / 20.1 in

LILY™

Design: Arne Jacobsen, 1970

Arne Jacobsen first created the sleek, curvaceous Lily™ chair for Denmark's Nationalbank. Its characteristic wide shoulders and slim waist are striking examples of Jacobsen exploring and challenging the possibilities of veneer to create perfect curves and offer ultimate comfort.

Shell: Natural veneer (walnut) or fully upholstered in textile and leather.
Base: Chromed steel.
Accessories: Felt glides.



Model: 3108
 Height: 83 cm / 32.6 in
 Seat height: 46 cm / 18.1 in
 Width: 54 cm / 21.2 in
 Depth: 49 cm / 19.2 in
 Features: Stackable



Model: 3208
 Height: 83 cm / 32.6 in
 Seat height: 46 cm / 18.1 in
 Armrest height: 71 cm / 28 in
 Width: 62 cm / 24.4 in
 Depth: 49 cm / 19.2 in

DROP™

Design: Arne Jacobsen, 1958

The Drop™ chair draws inspiration from the feeling of an embrace, but it has also been designed for freedom of movement; creating a unique sense of comfort. Designed by Arne Jacobsen, it was originally created for the SAS Royal Hotel in Copenhagen before being relaunched in 2014. It is said to be Jacobsen's favourite chair among his many designs.

Shell: Plastic or fully upholstered in textile and leather.
Base: Chromed and powder coated steel.
Accessories: Seat cushion, Felt glides.



Model: 3110
 Height: 88.5 cm / 34.8 in
 Seat height: 46 cm / 18.1 in
 Width: 45.5 cm / 17.9 in
 Depth: 54.5 cm / 21.5 in



Model: 3110UB
 Height: 88.5 cm / 34.8 in
 Seat height: 46 cm / 18.1 in
 Width: 45.5 cm / 17.9 in
 Depth: 54.5 cm / 21.5 in

CHAIRS

CHINA CHAIR™

Design: Hans J. Wegner, 1944

The China Chair™ was designed by Hans J. Wegner in 1944. Inspired by the timeless aesthetic of ancient Chinese design in the 17th and 18th century, the China Chair epitomises his lifelong quest to understand the nature of wood and explore its possibilities. In his modern interpretation, he unfolds his talent as a wood craftsman and his flair for expressive and sculptural functionalism.

Shell/Base: Solid wood (cherry and black coloured ash).
Seat cushion: Upholstered in selected leather types.



Model: 4283
Height: 82 cm / 32.3 in
Seat height: 45 cm / 17.7 in
Armrest height: 68 cm / 26.8 in
Width: 55 cm / 21.7 in
Depth: 55 cm / 21.7 in

N01™

Design: nendo, 2018

The N01™ chair fuses Danish and Japanese design in nine layers of pressure moulded veneer and solid wood legs. Millimetre by millimetre, the design is an illustration of beauty and functionality.

Shell/Base: Mix of solid wood and veneer (beech, oak or black coloured oak).
Accessories: Seat cushion.



Model: N01
Height: 77 cm / 30.3 in
Seat height: 46.5 cm / 18.3 in ■
Armrest height: 66 cm / 26 in
Width: 62 cm / 24.4 in
Depth: 49 cm / 19.3 in

SAMMEN™

Design: Jaime Hayon, 2015

Derived from the Danish word 'sammen' or 'together', the Sammen™ chair is a sleek, modern ode to the many hours spent sharing meals and thoughts around the dinner table. Designed by Jaime Hayon, the chair features wooden legs and a soft, padded shell for ultimate comfort.

Shell: Fully upholstered in textile and leather.
Base: Veneer (oak or black lacquered oak).



Model: JH20
Height: 86 cm / 33.9 in
Seat height: 45.5 cm / 17.9 in
Width: 49 cm / 19.3 in
Depth: 58 cm / 22.8 in



Model: JH30
Height: 86 cm / 33.9 in
Seat height: 45.5 cm / 17.9 in
Armrest height: 67 cm / 26.4 in
Width: 55.5 cm / 21.9 in
Depth: 58 cm / 22.8 in

VICO DUO

Design: Vico Magistretti, 1997/2020

The Vico Duo is a stylish veneer stacking chair with simple, tight lines. Magistretti designed the original in 1997, sitting among his sketches in Fritz Hansen's design department. The chair is well suited for agile work spaces and hospitality.

Shell: Veneer (oak, walnut or black coloured ash).
Base: Chromed and powder coated steel (black).
Accessories: Seat cushion, Felt glides.



Model: VM110
Height: 79 cm / 31.1 in
Seat height: 46 cm / 18.1 in
Width: 55 cm / 21.7 in
Depth: 52 cm / 20.5 in
Features: Stackable



Model: VM111
Height: 79 cm / 31.1 in
Seat height: 46 cm / 18.1 in
Armrest height: 68 cm / 26.8 in
Width: 60 cm / 23.6 in
Depth: 52 cm / 20.5 in
Features: Stackable

CHAIRS

N02™ RECYCLE

Design: nendo, 2019

The N02™ Recycle is a multi-use chair made from upcycled plastic household waste that can be recycled again. A crease in the chair's back is inspired by a folded piece of paper on the designer's studio table and provides extra support for the upper and lower back. Seven colour options are inspired by Scandinavian nature and, along with multiple base options, make N02 Recycle particularly applicable for work, meeting and dining arrangements.

Shell: Recycled plastic.
Base: Chromed or powder coated steel.
Accessories: Seat cushion, Felt glides, Linking device.



Model: N02-10
Height: 81 cm / 31.9 in
Seat height: 46 cm / 18.1 in
Width: 54 cm / 21.3 in
Depth: 54 cm / 21.3 in
Features: Stackable



Model: N02-11
Height: 81 cm / 31.9 in
Seat height: 46 cm / 18.1 in
Armrest height: 67 cm / 26.4 in
Width: 61 cm / 24 in
Depth: 54 cm / 21.3 in
Features: Stackable



Model: N02-20
Height: 81 cm / 31.9 in
Seat height: 46 cm / 18.1 in
Width: 54 cm / 21.3 in
Depth: 53 cm / 20.9 in
Features: Stackable



Model: N02-30
Height: 77-90 cm / 30.3-35.4 in
Seat height: 42-55 cm / 16.5-21.6 in
Width: 62.5 cm / 24.6 in
Depth: 62.5 cm / 24.6 in



Model: N02-31
Height: 77-90 cm / 30.3-35.4 in
Seat height: 42-55 cm / 16.5-21.6 in
Armrest height: 63-76 cm / 24.8-30 in
Width: 62.5 cm / 24.6 in
Depth: 62.5 cm / 24.6 in



PAIR™

Design: Benjamin Hubert, 2016

The PAIR™ chair sets the standard for beauty and practicality. Designed by British industrial designer Benjamin Hubert, the PAIR allows you to mix and match bases and backrests for infinite possibilities. The lightweight form and unique stacking design represent timeless, tactile simplicity at its best.

Shell: Plastic (backrest) and veneer (seat).
 Base: Chromed or powder coated steel (select models) and polished or black powder coated aluminium (select models).
 Accessories: Seat cushion, Felt glides, Linking device.



Model: BH20
 Height: 79 cm / 31.1 in
 Seat height: 46.5 cm / 18.3 in
 Width: 58 cm / 22.8 in
 Depth: 52 cm / 20.5 in
 Features: Stackable



Model: BH30
 Height: 79 cm / 31.1 in
 Seat height: 46.5 cm / 18.3 in
 Armrest height: 69 cm / 27.2 in
 Width: 58 cm / 22.8 in
 Depth: 52 cm / 20.5 in
 Features: Stackable



Model: BH21
 Height: 79 cm / 31.1 in
 Seat height: 46.5 cm / 18.3 in
 Width: 58 cm / 22.8 in
 Depth: 50 cm / 19.7 in
 Features: Stackable



Model: BH31
 Height: 79 cm / 31.1 in
 Seat height: 46.5 cm / 18.3 in
 Armrest height: 69 cm / 27.2 in
 Width: 58 cm / 22.8 in
 Depth: 50 cm / 19.7 in
 Features: Stackable



Model: BH25
 Height: 73-87 cm / 28.7-34.3 in
 Seat height: 41-55 cm / 16.1-21.7 in
 Width: 57 cm / 22.4 in
 Depth: 57 cm / 22.4 in



Model: BH35
 Height: 73-87 cm / 28.7-34.3 in
 Seat height: 41-55 cm / 16.1-21.7 in
 Armrest height: 64-78 cm / 25.2-30.7 in
 Width: 57 cm / 22.4 in
 Depth: 57 cm / 22.4 in



NAP™

Design: Kasper Salto, 2010

The iconic NAP™ chair features an elegant, curvaceous form. The contours of the Nylon shell adapt naturally to the shape of the human body and the textured waves make hours of sitting a superb experience – no matter the position. It features a high gloss back and a rippled matt front to emphasise the chair's dynamic design.

Shell: Plastic.
 Base: Chromed, powder coated steel or veneer (oak).
 Accessories: Seat cushion, Linking device.



Model: KS50
 Height: 77 cm / 30.3 in
 Seat height: 45 cm / 17.7 in
 Width: 54 cm / 21.3 in
 Depth: 51 cm / 20 in
 Features: Stackable



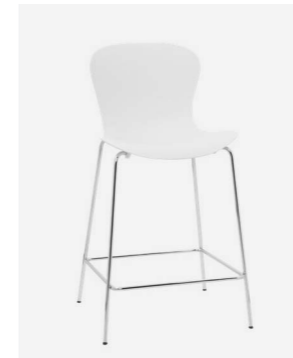
Model: KS60
 Height: 77 cm / 30.3 in
 Seat height: 45 cm / 17.7 in
 Armrest height: 64-67 cm / 25.2-26.4 in
 Width: 62 cm / 24.4 in
 Depth: 51 cm / 20 in
 Features: Stackable



Model: KS51
 Height: 77 cm / 30.3 in
 Seat height: 45 cm / 17.7 in
 Width: 54 cm / 21.3 in
 Depth: 51 cm / 20 in
 Features: Stackable



Model: KS61
 Height: 77 cm / 30.3 in
 Seat height: 45 cm / 17.7 in
 Armrest height: 64-67 cm / 25.2-26.4 in
 Width: 62 cm / 24.4 in
 Depth: 51 cm / 20 in



Model: KS58
 Height: 97 cm / 38.2 in
 Seat height: 64 cm / 25.2 in
 Width: 56 cm / 22 in
 Depth: 52 cm / 20.5 in



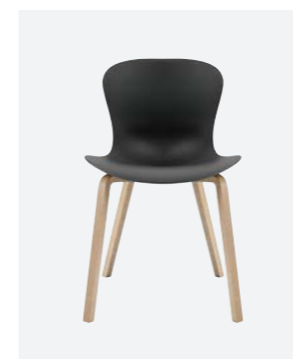
Model: KS68
 Height: 97 cm / 38.2 in
 Seat height: 64 cm / 25.2 in
 Armrest height: 83-86 cm / 32.7-33.9 in
 Width: 62 cm / 24.4 in
 Depth: 52 cm / 20.5 in



Model: KS59
 Height: 109 cm / 43 in
 Seat height: 76 cm / 30 in
 Width: 56 cm / 22 in
 Depth: 54 cm / 21.2 in



Model: KS69
 Height: 109 cm / 43 in
 Seat height: 76 cm / 30 in
 Armrest height: 95-98 cm / 37.4-38.6 in
 Width: 62 cm / 24.4 in
 Depth: 54 cm / 21.2 in



Model: KS52
 Height: 77 cm / 30.3 in
 Seat height: 45 cm / 17.7 in
 Width: 54 cm / 21.3 in
 Depth: 51 cm / 20 in



Model: KS62
 Height: 77 cm / 30.3 in
 Seat height: 45 cm / 17.7 in
 Armrest height: 64-67 cm / 25.2-26.4 in
 Width: 62 cm / 24.4 in
 Depth: 51 cm / 20 in

■ Available in additional height (chromed steel)

OXFORD™ CLASSIC

Design: Arne Jacobsen, 1965

The Oxford™ chair was handcrafted for the professors at St Catherine's College in Oxford and designed by Arne Jacobsen. A symbol of prestige and status, the high back and smooth, curved veneer form were crafted to invoke a sense of space and privacy. The design evolved over time into today's Oxford™ Classic.

Shell: Fully upholstered in textile or leather.

Base: Satin polished aluminium (standard) or mirror chromed.



Model: 3171C
Height: 90 cm / 35.4 in
Seat height: 47.5 cm / 18.7 in
Width: 50 cm / 19.6 in
Depth: 57 cm / 22.4 in



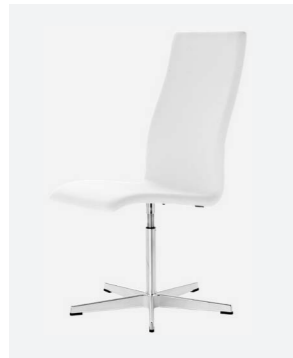
Model: 3191C
Height: 87-100 cm / 34.2-39.4 in
Seat height: 42-55 cm / 16.5-21.6 in
Width: 50 cm / 19.6 in
Depth: 57 cm / 22.4 in



Model: 3271C
Height: 90 cm / 35.4 in
Seat height: 47.5 cm / 18.7 in
Armrest height: 69 cm / 27.1 in
Width: 60 cm / 23.6 in
Depth: 57 cm / 22.4 in



Model: 3291C
Height: 87-100 cm / 34.2-39.4 in
Seat height: 42-55 cm / 16.5-21.6 in
Armrest height: 64-77 cm / 25.1-30.3 in
Width: 60 cm / 23.6 in
Depth: 57 cm / 22.4 in



Model: 3173C
Height: 104 cm / 40.9 in
Seat height: 47.5 cm / 18.7 in
Width: 50 cm / 19.6 in
Depth: 60 cm / 23.6 in



Model: 3193C
Height: 100-113 cm / 39.4-44.5 in
Seat height: 42-55 cm / 16.5-21.6 in
Width: 50 cm / 19.6 in
Depth: 60 cm / 23.6 in



Model: 3273C
Height: 104 cm / 40.9 in
Seat height: 47.5 cm / 18.7 in
Armrest height: 69 cm / 27.1 in
Width: 60 cm / 23.6 in
Depth: 60 cm / 23.6 in



Model: 3293C
Height: 100-113 cm / 39.4-44.5 in
Seat height: 42-55 cm / 16.5-21.6 in
Armrest height: 64-77 cm / 25.1-30.3 in
Width: 60 cm / 23.6 in
Depth: 60 cm / 23.6 in

OXFORD™ PREMIUM

Design: Arne Jacobsen, 1965

The Oxford™ Premium chair is an elegant and iconic relaunch of Arne Jacobsen's Oxford™ Classic, designed for St Catherine's College in Oxford. Its characteristic high back served as a symbol of prestige and created a sense of privacy when placed around the professors' table. Foam has been incorporated into the design for added levels of comfort.

Shell: Fully upholstered in textile or leather.

Base: Satin polished aluminium (standard) or mirror chromed.



Model: 3271P
Height: 90 cm / 35.4 in
Seat height: 50 cm / 19.6 in
Armrest height: 69 cm / 27.1 in
Width: 62 cm / 24.4 in
Depth: 57 cm / 22.4 in



Model: 3291P
Height: 90-103 cm / 35.4-40.5 in
Seat height: 45-58 cm / 17.7-22.8 in
Armrest height: 64-77 cm / 25.1-30.3 in
Width: 62 cm / 24.4 in
Depth: 57 cm / 22.4 in



Model: 3273P
Height: 104 cm / 40.9 in
Seat height: 50 cm / 19.6 in
Armrest height: 69 cm / 27.1 in
Width: 62 cm / 24.4 in
Depth: 60 cm / 23.6 in



Model: 3293P
Height: 103-116 cm / 40.5-45.7 in
Seat height: 45-58 cm / 17.7-22.8 in
Armrest height: 64-77 cm / 25.1-30.3 in
Width: 62 cm / 24.4 in
Depth: 60 cm / 23.6 in

LITTLE GIRAFFE™

Design: Arne Jacobsen, 1959

The Giraffe chair was designed by Arne Jacobsen in 1959, specifically for the restaurant at the SAS Royal Hotel in Copenhagen. Its high back and padded armrests make for a cosy and comfortable seat. The Little Giraffe™ chair is an evolution of its iconic predecessor – a striking rendition suitable for hospitality, meeting rooms or dining spaces.

Shell: Fully upholstered in textile or leather (fixed or replaceable cover).
Base: Chromed or powder coated steel (select models) and polished or black powder coated aluminium (select models).



Model: 3201 / 3201R
Height: 89.4 cm / 35.2 in
Seat height: 46 cm / 18.1 in
Armrest height: 65.5 cm / 25.7 in
Width: 64 cm / 25.1 in
Depth: 61 cm / 24 in



Model: 3211 / 3211R
Height: 85-96 cm / 33.4-37.7 in
Seat height: 43-54 cm / 16.9-21.2 in
Armrest height: 62.5-73.5 cm / 24.6-28.9 in
Width: 64 cm / 25.1 in
Depth: 61 cm / 24 in



CHAIRS

PK8™

Design: Poul Kjærholm, 1978/2007

For many years, the PK8™ existed only as a prototype in the home of Hanne Kjærholm, the wife of Poul Kjærholm. Today, it's widely recognised as a striking execution of Scandinavian craftsmanship. Its unique three-legged form and sinuous curves give it an expression all its own.

Shell: Plastic (black or white) with front upholstery in leather.
Base: Anodised satin brushed aluminium.



Model: PK8
Height: 77 cm / 30.3 in
Seat height: 44 cm / 17.3 in
Width: 59 cm / 23.2 in
Depth: 51 cm / 20 in

PK9™

Design: Poul Kjærholm, 1960

The PK9's unique shape is characterised by three pieces of satin-brushed stainless spring steel that act as a column, carrying the leather seating element. Poul Kjærholm was inspired by a sand imprint of his wife's behind from a day at the beach. Later, during the design process, Hanne Kjærholm sat in boxes of clay to find the most optimal and comfortable solution.

Shell: Fully upholstered in leather.
Base: Satin brushed stainless spring steel.



Model: PK9
Height: 77 cm / 30.3 in
Seat height: 43 cm / 16.9 in
Width: 58 cm / 22.8 in
Depth: 58 cm / 22.8 in

PK11™

Design: Poul Kjærholm, 1957

Characterised by its three-legged satin brushed stainless steel frame, PK11™ strikes the perfect balance of curves and bold angles. Designed by Poul Kjærholm in 1957, it is a complex yet elegant chair, created as a companion to the PK51™ worktable.

Shell: Armrest in veneer (ash) with a seat upholstered in leather.
Base: Satin brushed stainless steel.



Model: PK11
Height: 69 cm / 27.2 in
Seat height: 43-44 cm / 17-17.3 in
Width: 64 cm / 25.2 in
Depth: 44 cm / 17.3 in



STOOLS

PK33™

Design: Poul Kjærholm, 1959

The iconic PK33™ epitomises Poul Kjærholm's use of assembly techniques, his exploration of materials and his simplification of structure into a type-form. The three-legged matt chromed spring steel stool borrows elements from his other designs, while still maintaining its own unique expression.

Seat: Canvas or leather.
Base: Matt chromed spring steel.



Model: PK33
Height: 34 cm / 13.4 in
Width: 53 cm / 20.9 in
Depth: 53 cm / 20.9 in

PK91™

Design: Poul Kjærholm, 1961

The PK91™, designed by Poul Kjærholm, is an homage to the designer's mentor, Kaare Klint, who made a folding chair in wood in 1930. This folding stool is unmistakably a Kjærholm classic.

Seat: Canvas or leather.
Base: Satin brushed stainless steel.



Model: PK91
Height: 41 cm / 16.1 in
Width: 59 cm / 23.2 in
Depth: 45 cm / 17.7 in

DOT™

Design: Arne Jacobsen, 1955

The Dot™ stool is beautiful, simple seating that can be used as core or extra seating in the office, or at home. Modern, minimal and quiet, this sophisticated design was used by Arne Jacobsen in multiple, important projects.

Seat: Leather (Wild in walnut / Intense in black).
Base: Chromed or powder coated (matt black) steel.



Model: 840100 / 840105
Height: 46 cm / 18.1 in
Width: 34 cm / 13.4 in
Depth: 34 cm / 13.4 in
Note: Accessories assortment

HIGH DOT™

Design: Arne Jacobsen, 1955

The High Dot™ stool is beautiful, simple high seating for counters, bars or high office tables. Modern, minimal and quiet, this sophisticated design by Arne Jacobsen is timeless and practical.

Seat: Leather (Wild in walnut / Intense in black).
Base: Chromed or powder coated (matt black) steel.



Model: 840106 / 840107
Height: 65 cm / 25.6 in
Width: 44 cm / 17.3 in
Depth: 44 cm / 17.3 in
Note: Accessories assortment

SERIES 3300™

Design: Arne Jacobsen, 1956

The Series 3300™ was designed by Arne Jacobsen for the SAS Air Terminal connected to the SAS Royal Hotel. The series exudes Jacobsen's unflinching sense of line and proportion and is proof of his ability to design everlasting classics. The Series 3300™ forms an elegant contrast to the organic shapes of the Egg and Swan chairs, also designed especially for the Royal Hotel.

Shell: Fully upholstered in textile or leather.
Base: Chromed steel.



Model: 3300
Height: 72 cm / 28.4 in
Seat height: 36 cm / 14.2 in
Armrest height: 49-54 cm / 19.3-21.3 in
Width: 73 cm / 28.7 in
Depth: 79 cm / 31.1 in
Features: 2- and 3-seater sofa

SWAN™

Design: Arne Jacobsen, 1958

The beautiful Swan™ chair was designed by Arne Jacobsen in 1958 for the lobby and lounge areas of the SAS Royal Hotel in Copenhagen. The design contains no straight lines, making it look organic and soft despite its simplicity and strong architectural appeal.

Shell: Fully upholstered in textile or leather.
Base: Aluminium/Satin polished steel.



Model: 3320
Height: 77 cm / 30.3 in
Seat height: 40 cm / 15.8 in
Armrest height: 58 cm / 22.8 in
Width: 74 cm / 33.9 in
Depth: 68 cm / 26.8 in
Features: Automatic return, 2-seater sofa

POT™

Design: Arne Jacobsen, 1959

Arne Jacobsen created the Pot™ in 1959 for the SAS Royal Hotel in Copenhagen. Years later, the Pot was relaunched with a fresh take on Jacobsen's signature lounge chair, revitalised for the modern interior. Retaining the striking shape of its predecessor, the modern rendition meets today's demands through improved comfort and quality.

Shell: Fully upholstered in textile or leather.
Base: Chromed or dark brown powder coated steel.



Model: 3318
Height: 70 cm / 27.5 in
Seat height: 42.7 cm / 16.8 in
Width: 75.5 cm / 29.7 in
Depth: 60 cm / 23.6 in



EGG™

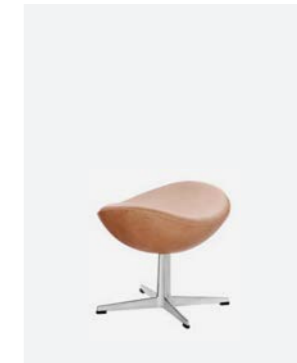
Design: Arne Jacobsen, 1958

The Egg™ chair by Arne Jacobsen is an everlasting Danish design masterpiece. Like a sculptor, Jacobsen strived to shape the shell's perfect form by experimenting with wire and plaster in his garage. Today, it is recognised worldwide as one of the triumphs of Jacobsen's legendary career and a monumental achievement in Scandinavian craftsmanship.

Shell: Fully upholstered in textile or leather.
Base: Aluminium/Satin polished steel.



Model: 3316
Height: 107 cm / 42.1 in
Seat height: 37 cm / 14.6 in
Armrest height: 58 cm / 22.8 in
Width: 86 cm / 33.9 in
Depth: 79-95 cm / 31.1-37.4 in
Features: Automatic return



Model: 3127
Height: 37 cm / 14.6 in
Width: 56 cm / 22 in
Depth: 40 cm / 15.7 in

OKSEN™

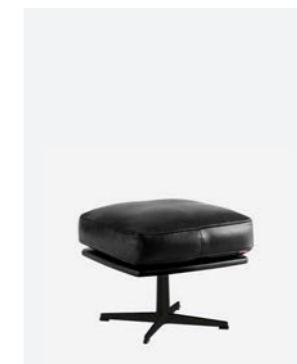
Design: Arne Jacobsen, 1966

The Oksen easy chair takes on a sharp, powerful expression, dominating a room like nothing else. Arne Jacobsen shocked design connoisseurs all over the world when he first introduced Oksen™ in 1966 – after no less than five years of design experimentation. In contrast to many of his earlier pieces characterised by rounded, organic shapes, Oksen is the largest and most controversial chair Arne Jacobsen ever designed.

Shell: Fully upholstered in leather.
Base: Satin polished or black powder coated aluminium.



Model: 4201
Height: 115 cm / 45.2 in
Seat height: 43 cm / 17 in
Armrest height: 58 cm / 22.8 in
Width: 101 cm / 39.8 in
Depth: 87 cm / 34.3 in
Features: Automatic return



Model: 4210
Height: 40 cm / 15.7 in
Width: 52 cm / 20.4 in
Depth: 52 cm / 20.4 in

LOUNGE

RO™

Design: Jaime Hayon, 2013

The Ro™ lounge chair is aptly named after the Danish word for 'tranquility'. Designed by Jaime Hayon, the easy chair creates space for relaxation and reflection, enticing you to immerse in its curves and take a moment for yourself. The four-legged base is made of brushed aluminium or solid oak with a clear lacquer finish.

Shell: Fully upholstered in textile (mix two textiles for shell and cushions) or leather.

Base: Brushed aluminium or solid wood (oak).



Model: JH1
Height: 113 cm / 44.5 in
Seat height: 43 cm / 17 in
Armrest height: 61 cm / 24 in
Width: 80 cm / 31.5 in
Depth: 97 cm / 38.2 in
Features: 2-seater sofa



Model: JH2
Height: 113 cm / 44.5 in
Seat height: 43 cm / 17 in
Armrest height: 61 cm / 24 in
Width: 80 cm / 31.5 in
Depth: 97 cm / 38.2 in
Features: 2-seater sofa



Model: JH11
Height: 40 cm / 15.7 in
Width: 58 cm / 22.8 in
Depth: 49 cm / 19.3 in



Model: JH12
Height: 40 cm / 15.7 in
Width: 58 cm / 22.8 in
Depth: 49 cm / 19.3 in

FRI™

Design: Jaime Hayon, 2015

The Fri™ easy chair adds a striking, sophisticated expression to any interior. Designed by Spanish designer Jaime Hayon, the chair has a soft, sculptured form that is as pleasing to the body as it is to the eye.

Shell: Fully upholstered in textile or leather.

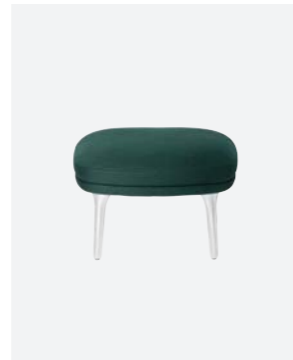
Base: Brushed aluminium or solid wood (oak).



Model: JH4
Height: 90.5 cm / 35.6 in
Seat height: 43 cm / 17 in
Armrest height: 58.5 cm / 23 in
Width: 80 cm / 31.5 in
Depth: 88 cm / 34.6 in
Features: Non-glued upholstery



Model: JH5
Height: 90.5 cm / 35.6 in
Seat height: 43 cm / 17 in
Armrest height: 58.5 cm / 23 in
Width: 80 cm / 31.5 in
Depth: 88 cm / 34.6 in
Features: Non-glued upholstery



Model: JH14
Height: 40 cm / 15.7 in
Width: 58 cm / 22.8 in
Depth: 49 cm / 19.3 in



Model: JH15
Height: 40 cm / 15.7 in
Width: 58 cm / 22.8 in
Depth: 49 cm / 19.3 in

LOUNGE

VIA57™

Design: Bjarke Ingels in collaboration with KiBISI, 2016

The VIA57™ easy chair was designed as part of a collaboration between Bjarke Ingels and Danish design group KiBISI. The collaboration celebrates the completion of Bjarke Ingels Group's first New York City project – the VIA57 WEST building – offering design aficionados around the world the opportunity to experience a piece of the Manhattan skyline in their own homes.

Shell: Fully upholstered in textile.

Base: Solid wood (oak).



Model: BI01
Height: 78 cm / 30.7 in
Seat height: 42 cm / 16.4 in
Width: 98 cm / 38.5 in
Depth: 91 cm / 35.8 in

FRED™

Design: Jaime Hayon, 2019

Elegant from every angle, the Fred™ lounge chair is a nod to calm and comfortable living. Designed by Jaime Hayon, the chair features a low, open silhouette and a sculpted wooden frame, crafted and assembled with care by hand. Wide, flat armrests and upright seating support the neck and arms – ideal for long periods of socialising or reading.

Cushions: Upholstered in textile or leather.

Base: Solid wood (black painted ash, walnut stained oak, clear lacquered oak or oiled oak).



Model: JH97
Height: 85.2 cm / 33.5 in
Seat height: 41 cm / 16.1 in
Armrest height: 55.6 cm / 21.8 in
Width: 77.4 cm / 30.4 in
Depth: 80.5 cm / 31.7 in



PK20™

Design: Poul Kjærholm, 1968

The PK20™ is a laidback and elegant easy chair, designed by Poul Kjærholm. Handcrafted in both wicker and leather, the chair features soft leather upholstery and a reclining headrest, resting on a flexible matt chromed spring steel frame. Over the years, the PK20 has become a Poul Kjærholm classic – as well as a permanent fixture at the Victoria and Albert Museum in London.

Shell: Leather (w. headrest) or wicker.
Base: Matt chromed spring steel.



Model: PK20
Height: 84 cm / 33.1 in
Seat height: 37 cm / 14.6 in
Width: 80 cm / 31.5 in
Depth: 71 cm / 28 in



Model: PK20
Height: 89 cm / 35 in
Seat height: 37 cm / 14.6 in
Width: 80 cm / 31.5 in
Depth: 71 cm / 28 in

PK22™

Design: Poul Kjærholm, 1956

The PK22™ has the subtle silhouette that has become a genuine design classic. The iconic chair exemplifies Poul Kjærholm's vision and quest for the ideal form and dimension. It remains a fundamentally modern chair for design enthusiasts today.

Shell: Canvas, leather or wicker.
Base: Satin brushed stainless spring steel.



Model: PK22
Height: 71 cm / 28 in
Seat height: 35 cm / 13.8 in
Width: 63 cm / 24.8 in
Depth: 63 cm / 24.8 in

PK25™

Design: Poul Kjærholm, 1951

The PK25™ was designed by Poul Kjærholm for his final graduation project at the School of Arts and Crafts in 1952. Also known as the 'Element' chair, the PK25 is a striking example of Kjærholm's eagerness to transform common, industrial materials into striking works of art. Kjærholm was determined to reduce the chair to a single piece of each material, resulting in its overarching hallmark: the continual steel frame that bends through the form without interruption.

Shell: Flag halyard (natural or black)
Base: Matt chromed spring steel.



Model: PK25
Height: 75 cm / 29.5 in
Seat height: 40 cm / 15.7 in
Width: 69 cm / 27.2 in
Depth: 73 cm / 28.7 in

PK24™

Design: Poul Kjærholm, 1965

The PK24™ chaise longue chair stands out as perhaps the most recognisable chair in Fritz Hansen's Poul Kjærholm's collection. Inspired by the Rococo period and the French chaise longue, Kjærholm used steel to support a curvy, flowing form. He labelled it the 'Hammock Chair' to stress that it functions by suspending the body between two points.

Shell: Leather or wicker.
Base: Satin brushed stainless spring steel.



Model: PK24
Height: 85 cm / 34.3 in
Seat height: 14 cm / 5.5 in
Width: 67 cm / 26.4 in
Depth: 155 cm / 61 in
Features: Leather upholstered headrest

PK31™

Design: Poul Kjærholm, 1958

The PK31™ chair and sofa series is a prime example of Poul Kjærholm's ability to work with exquisite materials and minimalism. In the search for the ideal form, Kjærholm created the PK31 – a fusion of elegance, luxury and comfort. The PK31 series is available as an armchair and a 2- or 3-seater sofa and features a matt chromed spring steel frame.

Shell: Fully upholstered in leather.
Base: Matt chromed spring steel.



Model: PK31
Height: 76 cm / 29.9 in
Seat height: 38 cm / 15 in
Armrest height: 48 cm / 18.9 in
Width: 76 cm / 29.9 in
Depth: 76 cm / 29.9 in
Features: 2- and 3-seater sofa

PK80™

Design: Poul Kjærholm, 1957

The PK80™ Daybed is the embodiment of Poul Kjærholm's talent for refining historical models and distilling design down to its very essence. The daybed draws inspiration from a couch designed by Mies van der Rohe and Lilly Reich in 1930. It can be found today in the Museum of Modern Art and around the world as a celebrated illustration of craftsmanship and modern design.

Shell: Canvas or leather.
Base: Satin brushed stainless steel.



Model: PK80
Height: 30 cm / 11.8 in
Width: 190 cm / 74.8 in
Depth: 80 cm / 31.5 in

PK81™

Design: Poul Kjærholm, 1959

PK81™ is a square version of Poul Kjærholm's classic daybed, made to furnish the public area of the new Tårnby town hall by Halldor Gunløgsson and Jørn Nielsen. Today, it graces powerful spaces around the world, including the Museum of Modern Art in New York City.

Shell: Leather.
Base: Satin brushed stainless steel.



Model: PK81
Height: 30 cm / 11.8 in
Width: 140 cm / 55.1 in
Depth: 140 cm / 55.1 in

SERIES 3300™

Design: Arne Jacobsen, 1956

The Series 3300™ was designed by Arne Jacobsen for the SAS Air Terminal connected to the SAS Royal Hotel. The series exudes Jacobsen's unflinching sense of line and proportion and is proof of his ability to design everlasting classics. The Series 3300™ forms an elegant contrast to the organic shapes of the Egg and Swan chairs, also designed especially for the Royal Hotel.

Shell: Fully upholstered in textile or leather.
Base: Chromed steel.



Model: 3302
Height: 72 cm / 28.4 in
Seat height: 36 cm / 14.2 in
Armrest height: 49-54 cm / 19.3-21.3 in
Width: 126 cm / 49.6 in
Depth: 79 cm / 31.1 in
Features: Lounge chair



Model: 3303
Height: 72 cm / 28.4 in
Seat height: 36 cm / 14.2 in
Armrest height: 49-54 cm / 19.3-21.3 in
Width: 182 cm / 71.7 in
Depth: 79 cm / 31.1 in
Features: Extension units, lounge chair

LISSONI SOFA™

Design: Piero Lissoni, 2006

The Lissoni Sofa™ is a sophisticated, modern sofa that adds a healthy dose of comfort and luxury to everyday life. Characterized by clean lines and flawless attention to detail, this sofa by Piero Lissoni has a remarkably pronounced appearance that elevates and adds character to any room.

Shell: Fully upholstered in textile or leather.
Base: Matt polished stainless steel.



Model: PL112
Height: 75 cm / 29.5 in
Seat height: 41 cm / 16.1 in
Armrest height: 53 cm / 20.7 in
Width: 198 cm / 77.9 in
Depth: 92 cm / 36.2 in



Model: PL113
Height: 75 cm / 29.5 in
Seat height: 41 cm / 16.1 in
Armrest height: 53 cm / 20.7 in
Width: 288 cm / 113.4 in
Depth: 92 cm / 36.2 in

SWAN SOFA™

Design: Arne Jacobsen, 1958

The Swan Sofa™ was designed by Arne Jacobsen in 1958 for the SAS Royal Hotel in Copenhagen and reintroduced to Fritz Hansen's collection in 2000. The design contains no straight lines, making it organic and soft to the eye despite its simplicity and strong architectural appeal.

Shell: Fully upholstered in textile or leather.
Base: Satin polished aluminium.



Model: 3321
Height: 79 cm / 31.1 in
Seat height: 40 cm / 15.8 in
Armrest height: 58 cm / 22.8 in
Width: 144 cm / 56.7 in
Depth: 74 cm / 29.1 in
Features: Lounge chair

PK26™

Design: Poul Kjærholm, 1956

The PK26™ is a striking wall-mounted sofa in flat steel with leather-covered back and seat, designed by Poul Kjærholm. The sofa appears to float mid-air with an extraordinary design that is beautiful from every angle.

Shell: Fully upholstered in leather.
Base: Matt chromed spring steel.



Model: PK26
Height: 76 cm / 29.9 in
Seat height: 36 cm / 14.2 in
Width: 152 cm / 59.8 in
Depth: 76 cm / 29.9 in
Features: Extendable

PK31™

Design: Poul Kjærholm, 1958

The PK31™ chair and sofa series is a prime example of Poul Kjærholm's ability to work with exquisite materials and minimalism. In the search for the ideal form, Kjærholm created the PK31 – a fusion of elegance, luxury and comfort. The PK31 series is available as an armchair and a 2- or 3-seater sofa and features a matt chromed spring steel frame.

Shell: Fully upholstered in leather.
Base: Matt chromed spring steel.



Model: PK31/2
Height: 76 cm / 29.9 in
Seat height: 38 cm / 15 in
Armrest height: 48 cm / 18.9 in
Width: 137 cm / 54 in
Depth: 76 cm / 29.9 in
Features: Lounge chair



Model: PK31/3
Height: 76 cm / 29.9 in
Seat height: 38 cm / 15 in
Armrest height: 48 cm / 18.9 in
Width: 198 cm / 78 in
Depth: 76 cm / 29.9 in
Features: Extension units, Lounge chair

FAVN™

Design: Jaime Hayon, 2011

Derived from the Danish term for 'embrace', the Favn™ sofa is a design collaboration between designer Jaime Hayon and Fritz Hansen. Its open and rounded curves are intended to appeal and invite – the perfect setting for relaxation, work and everything in-between.

Shell: Fully upholstered in textile (mix three textiles for shell, cushions and decorative cushions)
 Base: Brushed aluminium legs.



Model: JH3
 Height: 88 cm / 34.6 in
 Seat height: 42 cm / 16.5 in
 Armrest height: 60 cm / 23.6 in
 Width: 221 cm / 87 in
 Depth: 93 cm / 36.6 in
 Features: Buy additional decorative cushions



RO™ SOFA

Design: Jaime Hayon, 2017

The two-seater Ro sofa showcases the curvy form and playful expression that serve as the bedrock of Jaime Hayon's renowned design philosophy. Here, softness is expressed in an intimate yet spacious social setting for two.

Shell: Fully upholstered in textile (mix two textiles for shell and cushions)
 Base: Brushed aluminium or solid wood (oak).



Model: JH110
 Height: 115.5 cm / 45.5 in
 Seat height: 42.5 cm / 16.7 in
 Armrest height: 62.5 cm / 24.6 in
 Width: 150 cm / 59.1 in
 Depth: 97 cm / 38.2 in
 Features: Lounge chair



Model: JH120
 Height: 115.5 cm / 45.5 in
 Seat height: 42.5 cm / 16.7 in
 Armrest height: 62.5 cm / 24.6 in
 Width: 150 cm / 59.1 in
 Depth: 97 cm / 38.2 in
 Features: Lounge chair

ALPHABET SOFA™ SERIES

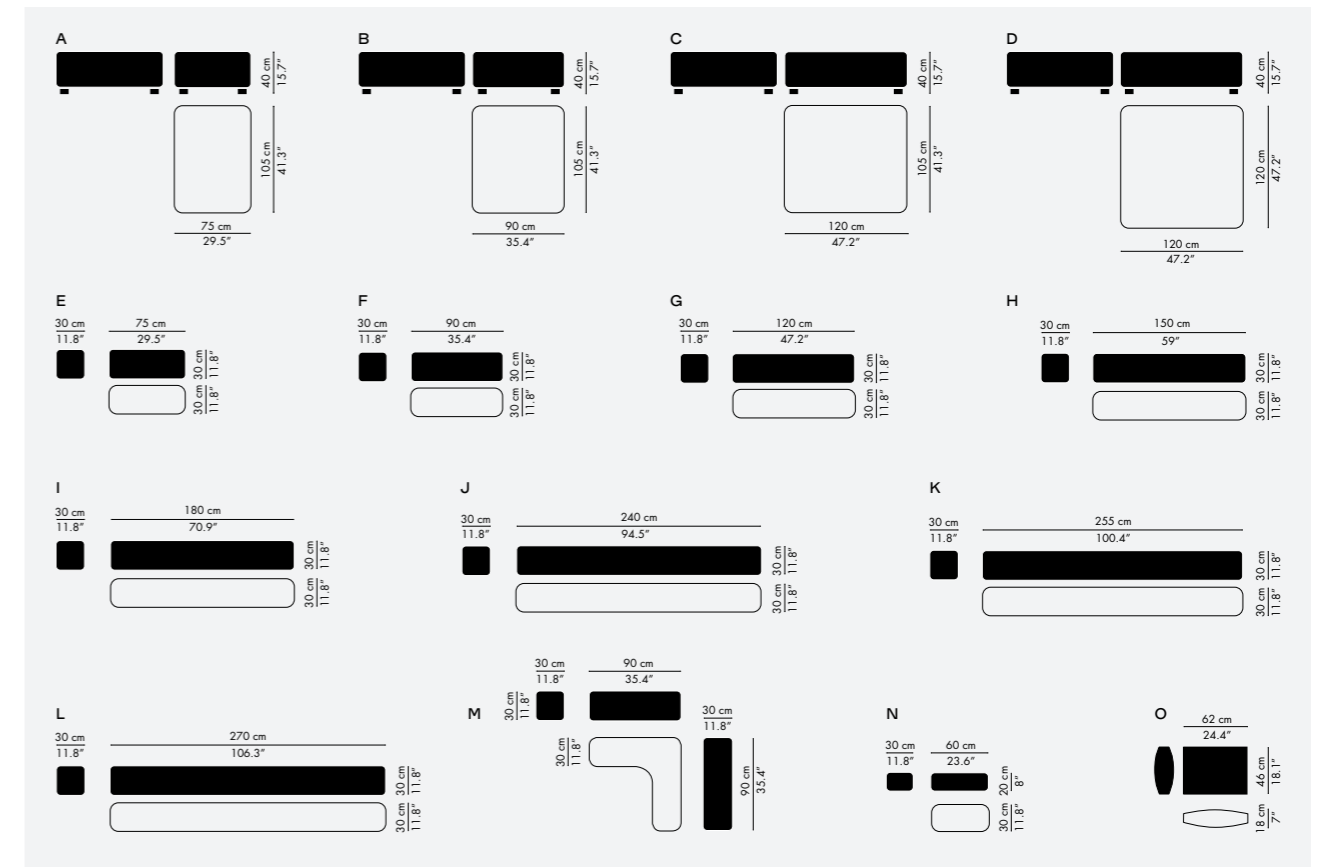
Design: Piero Lissoni, 2008

The Alphabet Sofa™ Series is a flexible modern design by Piero Lissoni, inspired by the look of toy Lego bricks. Its units can be combined in a variety of ways. The fully upholstered seat, back and armrest come in a wide variety of fabrics and can be removed for cleaning or replacement.

Shell: Fully upholstered in textile.
 Accessories: Loose decorative cushions.



Model: PL240-4
 Height: 70 cm / 27.6 in
 Seat height: 40 cm / 15.7 in
 Width: 240 cm / 94.5 in
 Depth: 120 cm / 47.2 in



- A Seat unit
- B Seat unit
- C Seat unit
- D Seat unit
- E Back unit
- F Back unit
- G Back unit
- H Back unit
- I Back unit
- J Back unit
- K Back unit
- L Back unit
- M Back corner unit
- N Armrest unit
- O Decorative cushion

LUNE™

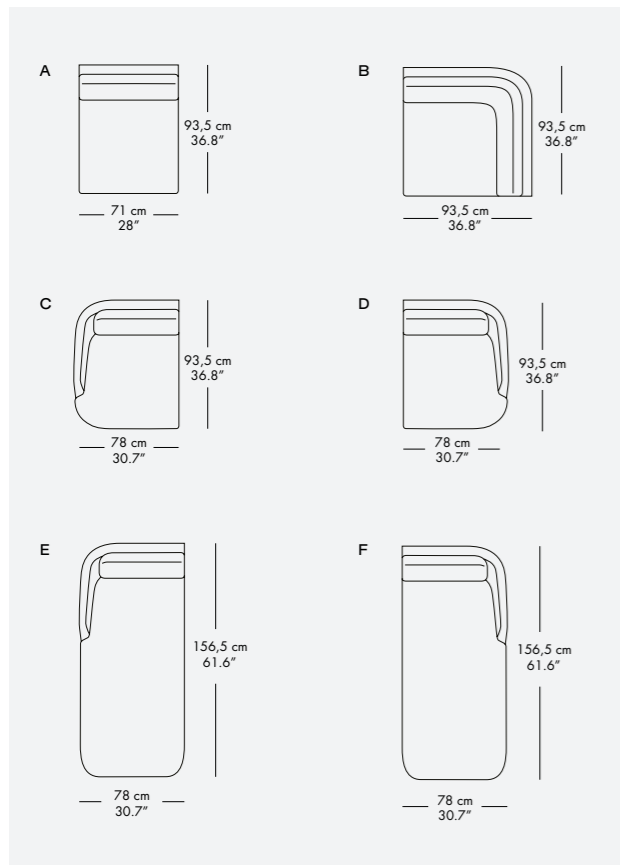
Design: Jaime Hayon, 2017

The sculptural, curvaceous Lune™ sofa is characteristic of designer Jaime Hayon and sits at the intersection of clean Nordic aesthetics and southern elegance. Lune is a functional, modular sofa that offers a myriad of possibilities: from a straight two-seater to larger L-shapes with chaise longue options. The result: a flexible sofa that is not only cosy and comfortable but also inherently beautiful from every angle.

Shell: Fully upholstered in textile or leather.
Base: Brushed aluminium, oak or black coloured oak.



Model: JH200
Height: 81.5 cm / 32 in
Seat height: 40.5 cm / 15.9 in
Armrest height: 60.5 cm / 23.8 in
Width: 155 cm / 61.1 in
Depth: 93.5 cm / 36.8 in



A Central unit
B Corner unit
C Arm unit left
D Arm unit right
E Chaise longue unit left
F Chaise longue unit right



PLENUM™

Design: Jaime Hayon, 2018

Plenum™ pays homage to the modern workspace – the perfect setting for collaboration, concentration or relaxation. Designed by Jaime Hayon, the curved high-back sofa system consists of one, two or three-seater units and features a range of added functionalities such as power plugs, USB ports and mounted or separate tables.

Sofa shell: Fully upholstered in textile.
Table top: Light grey laminate.
Base: Black powder coated steel.



Model: JH1001
Height: 143.4 cm / 56.4 in
Seat height: 46 cm / 18.1 in
Armrest height: 69.4 cm / 27.3 in
Width: 110.5 cm / 43.5 in
Depth: 82.1 cm / 32.3 in
Features: Power unit incl. USB ports*



Model: JH70
Height: 68.1 cm / 26.8 in
Diameter: 30 cm / 11.8 in
Note: To be mounted on sofa units upon order



Model: JH1002
Height: 143.4 cm / 56.4 in
Seat height: 46 cm / 18.1 in
Armrest height: 69.4 cm / 27.3 in
Width: 173.5 cm / 68.3 in
Depth: 82.1 cm / 32.3 in
Features: Power unit incl. USB ports*



Model: JH75
Height: 51.7 cm / 20.3 in
Length: 126 cm / 49.6 in
Width: 75.9 cm / 29.8 in



Model: JH1003
Height: 143.4 cm / 56.4 in
Seat height: 46 cm / 18.1 in
Armrest height: 69.4 cm / 27.3 in
Width: 236.5 cm / 91 in
Depth: 82.1 cm / 32.3 in
Features: Power unit incl. USB ports*



Model: JH80
Height: 72.5 cm / 28.5 in
Length: 126 cm / 49.6 in
Width: 75.9 cm / 29.8 in

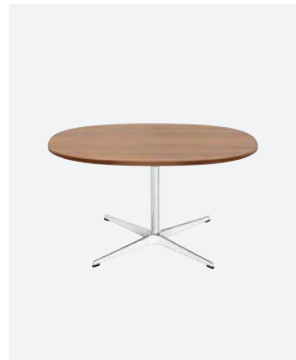
* Available in select countries.

COFFEE TABLE SERIES

Design: Piet Hein/Arne Jacobsen, 1968

Fritz Hansen offers a wide range of coffee tables assembled from legendary design components, in keeping with the Table Series design DNA. Elegant coffee tables can be created to complement any interior design.

Table top: Laminate or veneer (walnut).
Base: Satin polished aluminium/chromed steel.



Model: A202 (Super-Circular™)
Height: 47 cm / 18.5 in
Length: 75 cm / 29.5 in
Width: 75 cm / 29.5 in



Model: A203 (Super-Circular™)
Height: 47 cm / 18.5 in
Length: 100 cm / 39.4 in
Width: 100 cm / 39.4 in



Model: A222 (Circular)
Height: 47 cm / 18.5 in
Diameter: 75 cm / 29.5 in



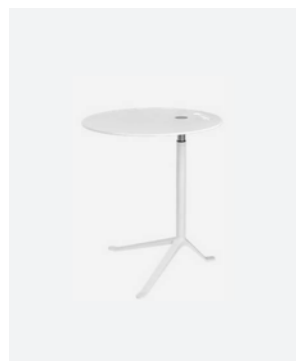
Model: A223 (Circular)
Height: 47 cm / 18.5 in
Diameter: 90 cm / 35.4 in

LITTLE FRIEND™

Design: Kasper Salto, 2005

Little Friend™ by Kasper Salto is a flexible, multifunctional and portable solution to the challenges of modern minimalistic working and living. It is perfect for a laptop as well as morning coffee.

Table top: Compact laminate (black or white) or veneer (oak or walnut).
Base: Chromed steel/Polished aluminium or lacquered steel.



Model: KS11
Height: 50-73 cm / 19.7-28.7 in
Diameter: 45 cm / 17.7 in
Features: Height adjustable



Model: KS12
Height: 60 cm / 23.6 in
Diameter: 45 cm / 17.7 in



Model: 840120 / 840121
Height: 42 cm / 16.5 in
Diameter: 45 cm / 17.7 in
Features: Foldable
Note: Accessories assortment



Model: 840122
Height: 39 cm / 15.4 in
Diameter: 60 cm / 23.6 in
Features: Foldable
Note: Accessories assortment

PLANNER™ COFFEE TABLES

Design: Paul McCobb, 1952

The Planner™ coffee tables are part of a relaunched Fritz Hansen collection by Paul McCobb, a legendary designer known for creating slender designs where form follows function. Featuring a structured marble surface and a powder-coated steel base, the coffee table is an illustration of raw, tactile simplicity.

Table top: Marble (cream or charcoal).
Base: Black powder coated steel.



Model: MC300
Height: 40 cm / 15.7 in
Diameter: 80 cm / 31.5 in



Model: MC310
Height: 40 cm / 15.7 in
Length: 75 cm / 29.5 in
Width: 45 cm / 17.7 in



Model: MC320
Height: 40 cm / 15.7 in
Length: 80 cm / 31.5 in
Width: 80 cm / 31.5 in

JOIN™

Design: Fritz Hansen, 2014

The Join™ series was born out of a desire to create a flexible, light coffee table that could bring people and furniture together in one seamless union. The series has a subtle, understated expression and comes in three distinct shapes: a classic round table and two sizes of ovals.

Table top: Solid wood (oak or black coloured oak).
Base: Black powder coated steel.



Model: FH21
Height: 37 cm / 14.6 in
Length: 76 cm / 29.9 in
Width: 47 cm / 18.5 in



Model: FH41
Height: 37 cm / 14.6 in
Diameter: 80 cm / 31.5 in



Model: FH61
Height: 37 cm / 14.6 in
Length: 130 cm / 51.2 in
Width: 50 cm / 19.7 in

AJ TROLLEY

Design: Arne Jacobsen, 1955

As a stainless steel bar cart, serving trolley or side table, this mobile design is versatile with a sophisticated, architectural edge. Arne Jacobsen originally designed this elegant trolley for his tea, and the design has remained 'modern' – and very useful.

Table top: Black coloured ash.
Base: Stainless steel hairline.



Model: 840410
Height: 54.7 cm / 21.5 in
Length: 67 cm / 26.5 in
Width: 59 cm / 23 in
Note: Accessories assortment

PK62™

Design: Poul Kjærholm, 1968

In 1968, Poul Kjærholm set out to design a series of tables that could be combined with his collection of lounge chairs and sofas. The resulting PK62™ was created in connection with the development of two other chairs: the PK20™ and PK24™. A design favourite, the statement side table features a satin-brushed stainless steel base and a tabletop made of slate, marble or granite.

Table top: Slate, marble or granite.
Base: Satin brushed stainless steel.



Model: PK62
Height: 17 cm / 6.7 in
Length: 80 cm / 31.5 in
Width: 27 cm / 10.6 in

PK63™

Design: Poul Kjærholm, 1968

In 1968, Poul Kjærholm set out to design a series of tables that could be combined with his collection of lounge chairs and sofas. The resulting PK63™ was created in connection with the PK31™ 2-seater and 3-seater sofas. The iconic coffee table features a satin-brushed stainless steel base and a tabletop made of slate, marble or granite.

Table top: Slate, marble or granite.
Base: Satin brushed stainless steel.



Model: PK63
Height: 31 cm / 12.2 in
Length: 180 cm / 70.9 in
Width: 60 cm / 23.6 in

PK63A™

Design: Poul Kjærholm, 1968

In 1968, Poul Kjærholm set out to design a series of tables that could be combined with his collection of lounge chairs and sofas. The resulting PK63A™ was created in connection with the PK31™ 2-seater and 3-seater sofas. The iconic coffee table features a satin-brushed stainless steel base and a tabletop made of slate, marble or granite.

Table top: Slate, marble or granite.
Base: Satin brushed stainless steel.



Model: PK63A
Height: 31 cm / 12.2 in
Length: 120 cm / 47.2 in
Width: 60 cm / 23.6 in

PK61™

Design: Poul Kjærholm, 1956

The PK61™ coffee table is as minimalistic as it gets from the hand of Poul Kjærholm. The square, aesthetic design serves as a powerful manifesto and shows Kjærholm's development from industrial designer to noteworthy furniture architect.

Table top: Slate, marble, granite or glass.
Base: Satin brushed stainless steel.



Model: PK61
Height: 32 cm / 12.6 in
Length: 80 cm / 31.5 in
Width: 80 cm / 31.5 in

PK61A™

Design: Poul Kjærholm, 1956

The PK61A™ is an enlarged version of Poul Kjærholm's PK61™ coffee table. Four base elements are joined with industrial screws to create a unique, distinguished look. The removable tabletop demonstrates Kjærholm's recurring principle of using gravity to keep the elements in place.

Table top: Marble, granite or glass.
Base: Satin brushed stainless steel.



Model: PK61A
Height: 32 cm / 12.6 in
Length: 120 cm / 47.2 in
Width: 120 cm / 47.2 in

PK65™

Design: Poul Kjærholm, 1979

This unique coffee table refers back to the best traditions of Scandinavian craftsmanship. As with several of his tables, Kjærholm created PK65™ to complement one or more of his many chairs and sofas; in this case, the PK20™ lounge chair.

Table top: Slate, marble, granite or glass.
Base: Satin brushed stainless steel.



Model: PK65
Height: 38 cm / 15 in
Length: 100 cm / 39.4 in
Width: 100 cm / 39.4 in

PK71™

Design: Poul Kjærholm, 1957

The PK71™ comprises of a series of three nesting tables, designed to be stored and stacked under each other. With their toy-like appearance, the small, abstract tables were designed to be shuffled around and used together or separate. Today, the PK71 are displayed in a permanent collection at the Museum of Modern Art in New York.

Table top: Acrylic (black or white).
Base: Satin brushed stainless steel.



Model: PK71
Height: 25.5, 27, 28.5 cm / 10, 10.6, 11.2 in
Length: 25, 26.5, 28 cm / 9.8, 10.4, 11 in
Width: 25, 26.5, 28 cm / 9.8, 10.4, 11 in

TABLE SERIES

Design: Piet Hein/Bruno Mathsson/Arne Jacobsen, 1968

Fritz Hansen offers a wide range of tables assembled from legendary design components. Elegant tables can be created to complement any interior design.

Table top: Laminate or veneer (walnut).
 Base (column): Satin polished aluminium/chromed steel.
 Base (span legs): Chromed or powder coated steel.



Model: B612 (Super-Elliptical™)
 Height: 72 cm / 28.3 in
 Length: 150 cm / 59.1 in
 Length between legs: 92 cm / 36.2 in
 Width: 100 cm / 39.4 in
 Features: Detachable legs
 Available in additional 5 sizes.



Model: B620 (Super-Elliptical™)
 Height: 72 cm / 28.3 in
 Length: 170-270 cm / 66.9-106 in
 Width: 100 cm / 39.4 in
 Features: Extendable, Detachable legs
 Available in additional 1 size.



Model: A622 (Circular)
 Height: 72 cm / 28.3 in
 Diameter: 75 cm / 29.5 in
 Available in additional 1 size.



Model: A826 (Circular)
 Height: 72 cm / 28.3 in
 Diameter: 145 cm / 57.1 in
 Available in additional 1 size.



Model: A602 (Super-Circular™)
 Height: 72 cm / 28.3 in
 Length: 75 cm / 29.5 in
 Width: 75 cm / 29.5 in
 Available in additional 1 size.



Model: B637 (Rectangular)
 Height: 72 cm / 28.3 in
 Length: 140 cm / 55.1 in
 Length between legs: 112 cm / 44.1 in
 Width: 80 cm / 31.5 in
 Features: Detachable legs
 Available in additional 1 size.

FH125

Design: Fritz Hansen, 2019

The FH125 is a small, sophisticated dining table. Its rounded rectangular shape seats 4-6 and features a modern, white laminate top and elegant, aluminium edge.

Table top: Laminate (white).
 Base: Chromed steel.



Model: FH125
 Height: 72 cm / 28.3 in
 Length: 125 cm / 49.2 in
 Length between legs: 87 cm / 34.3 in
 Width: 90 cm / 35.4 in
 Features: Detachable legs

ANALOG™

Design: Jaime Hayon, 2014

Analog™ is not a square, not a circle, not an oval. Instead, designer Jaime Hayon fuses the best of all three classic shapes to create an entirely new and organic form. The result is a beautiful, wood-based platform for sharing meals and conversations.

Table top: Laminate (white) or veneer (oak or walnut).
 Base: Solid wood (black lacquered oak, oak or walnut).



Model: JH43
 Height: 72 cm / 28.3 in
 Length: 130 cm / 51.2 in
 Length between legs: 66 cm / 26 in
 Width: 105 cm / 41.3 in



Model: JH63
 Height: 72 cm / 28.3 in
 Length: 185 cm / 72.8 in
 Length between legs: 117 cm / 46.1 in
 Width: 105 cm / 41.3 in



Model: JH83
 Height: 72 cm / 28.3 in
 Length: 245 cm / 96.5 in
 Length between legs: 177 cm / 69.7 in
 Width: 105 cm / 41.3 in



ESSAY™

Design: Cecilie Manz, 2009

Essay™ is an exclusive table series in solid wood, created by Danish designer Cecilie Manz. The table consists of three elements - a tabletop and two bases - crafted in a simple, natural form. With its elegant look and flexible functionality, the table serves as the ideal gathering point in contemporary spaces.

Table top: White pigmented oak (solid wood).
Base: White pigmented oak (solid wood).
Extension leaf: Black laminate
 (Length 48 cm/18.9 in, Width: 100 cm/39.4 in).



Model: CM12
 Height: 72 cm / 28.3 in
 Length: 190 cm / 74.8 in
 Length between legs: 123 cm / 48.4 in
 Width: 100 cm / 39.4 in
 Features: Extendable



Model: CM22
 Height: 72 cm / 28.3 in
 Length: 230 cm / 90.5 in
 Length between legs: 112 cm / 44.1 in
 Width: 100 cm / 39.4 in
 Features: Extendable



Model: CM32
 Height: 72 cm / 28.3 in
 Length: 265 cm / 104.3 in
 Length between legs: 128 cm / 50.4 in
 Width: 100 cm / 39.4 in
 Features: Extendable



Model: CM42
 Height: 72 cm / 28.3 in
 Length: 295 cm / 116 in
 Length between legs: 176 cm / 69.3 in
 Width: 100 cm / 39.4 in
 Features: Extendable

PK54™

Design: Poul Kjærholm, 1963

The PK54™ dining table represents an exploration of contrasting materials and forms by Poul Kjærholm. Circle meets square, marble meets mineral - every time you look at it, new details emerge. Featuring Italian marble or granite and a satin-polished steel frame, the table's delicate unevenness makes it the natural focal point in any room.

Table top: Marble or granite.
Base: Satin brushed stainless steel.



Model: PK54
 Height: 69 cm / 27.2 in
 Diameter: 140 cm / 55.1 in
 Features: Extendable (w. PK54A™)

PK54A™

Design: Poul Kjærholm, 1963

The PK54A™ extension ring provides a unique solution for those looking to extend the original PK54™ round dining table. Stone meets wood, hard meets soft - the table completely transforms appearance when the wooden extension ring is added. Perfect for plates around the table and a beautiful addition to the design.

Expansion ring: Solid wood (maple).
Storage unit: Solid wood (maple).



Model: PK54 + PK54A
 Height: 70 cm / 27.6 in
 Diameter: 210 cm / 82.7 in
 Features: Storage unit

PK58™

Design: Poul Kjærholm, 1963/2007

PK58™ is a minimalist table inspired by PK54™ although the table is slightly taller with different materials. The proportions are still carefully considered and beautifully executed, with a blend of circular tabletop and a cube base with sharp angles.

Table top: Polyester composite (white).
Base: Anodised satin brushed aluminium.



Model: PK58
 Height: 71 cm / 28 in
 Diameter: 130 cm / 51.2 in

PK40™

Design: Poul Kjærholm, 1980

PK40™ is a unique version of Poul Kjærholm's square conference table with a leather-covered tabletop and a stainless steel base. The juxtaposition of materials is remarkable, a truly luxury design executed with full attention to detail.

Table top: Leather.
Base: Satin brushed stainless steel.



Model: PK40
 Height: 70 cm / 27.6 in
 Length: 140 cm / 55.1 in
 Width: 140 cm / 55.1 in

PLURALIS™

Design: Kasper Salto, 2016

As inferred by its name, the Pluralis™ table by Kasper Salto offers a myriad of possibilities. Characterised by its understated design, elegance and uncompromising quality, it brings a whole new level of functionality to the workspace.

Table top: Laminate, linoleum or veneer.
Base: Polished or black powder coated aluminium.
Accessories: Cable management.



Model: KS410
Height: 72 cm / 28.3 in
Length: 180 cm / 70.8 in
Length between legs: 163 cm / 64.2 in
Width: 90 cm / 35.4 in



Model: KS411
Height: 72 cm / 28.3 in
Length: 200 cm / 78.7 in
Length between legs: 163 cm / 64.2 in
Width: 100 cm / 39.4 in



Model: KS412A
Height: 72 cm / 28.3 in
Length: 240 cm / 94.5 in
Length between legs: 225 cm / 88.9 in
Width: 120 cm / 47.2 in



Model: KS412B
Height: 72 cm / 28.3 in
Length: 240 cm / 94.5 in
Length between legs: 163 cm / 64.2 in
Width: 120 cm / 47.2 in

PK51™

Design: Poul Kjærholm, 1957

The PK51™ is an iconic rectangular worktable handcrafted in 1957 by Poul Kjærholm. Characterised by an ash veneer tabletop and a satin-brushed stainless steel frame, the table was originally launched together with PK11™ as a matching set.

Table top: Ash veneer.
Base: Satin brushed stainless steel.



Model: PK51
Height: 72 cm / 28.3 in
Length: 204 cm / 80.3 in
Width: 102 cm / 40.2 in

PK55™

Design: Poul Kjærholm, 1957

The PK55™ is an iconic rectangular worktable handcrafted in 1957 by Poul Kjærholm. Characterised by an ash veneer tabletop and a satin-brushed stainless steel frame, the PK55 was launched as a smaller version of the PK51™.

Table top: Ash veneer.
Base: Satin brushed stainless steel.



Model: PK55
Height: 72 cm / 28.3 in
Length: 180 cm / 70.9 in
Width: 90 cm / 35.4 in

BAR TABLE SERIES

Design: Piet Hein/Arne Jacobsen, 1968

Fritz Hansen offers a wide range of bar tables assembled from legendary design components, in keeping with the Table Series design DNA. Elegant bar tables can be created to complement any interior design.

Table top: Laminate or veneer (walnut).
Base: Satin polished aluminium/satin chromed steel.



Model: A902 (Super-Circular™)
Height: 108 cm / 42.5 in
Length: 75 cm / 29.5 in
Width: 75 cm / 29.5 in



Model: A922 (Circular)
Height: 108 cm / 42.5 in
Diameter: 75 cm / 29.5 in

PLANNER™ SHELVING

Design: Paul McCobb, 1952

Designed by the late Paul McCobb, a pioneer of contemporary democratic design, the Planner™ Shelving series combines his signature graphic aesthetic with elegant expression. Named after its ability to help shape the design of a room, the simple yet striking shelving is available in three versions, each in varying heights and configurations.

Shelves: Oak veneer.
Base: Black powder coated steel.



Model: MC500
Height: 84.4 cm / 33.2 in
Width: 120.7 cm / 47.5 in
Depth: 38.1 cm / 15 in



Model: MC510
Height: 123.2 cm / 48.5 in
Width: 120.7 cm / 47.5 in
Depth: 38.1 cm / 15 in



Model: MC520
Height: 165 cm / 65 in
Width: 120.7 cm / 47.5 in
Depth: 38.1 cm / 15 in



RUGS

Design: Cecilie Manz, 2020

Handmade rugs add colour and sophisticated dimension at floor level. Various tufting heights within each design make them subtly three-dimensional and tactically interesting.

Material: 100% wool, handtufted.



Name: Balance
Model: 840401
Length: 130 cm / 51.1 in
Width: 103 cm / 40.5 in



Name: Ochre
Model: 840403
Length: 130 cm / 51.1 in
Width: 103 cm / 40.5 in



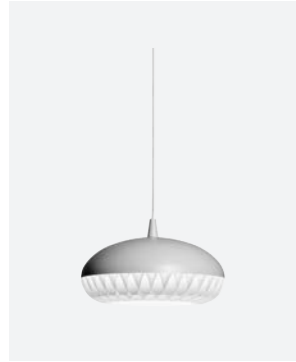
Name: Dotted Balance
Model: 840402
Length: 130 cm / 51.1 in
Width: 103 cm / 40.5 in



Name: Dots
Model: 840400
Length: 190 cm / 75 in
Width: 150 cm / 59 in

AEON ROCKET™

Design: Morten Voss, 2012



Category: Pendant
Model: P1
Height: 23.6 cm / 9.2 in
Diameter: 40 cm / 15.7 in
Colour: Aeon-Grey, Aeon-Black



Category: Pendant
Model: P3
Height: 33.2 cm / 12.9 in
Diameter: 60 cm / 23.6 in
Colour: Aeon-Grey, Aeon-Black

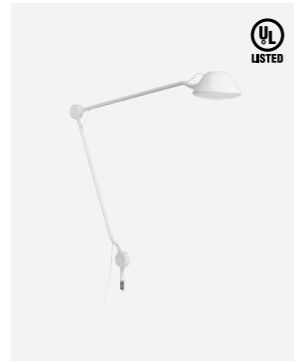


AQ01™

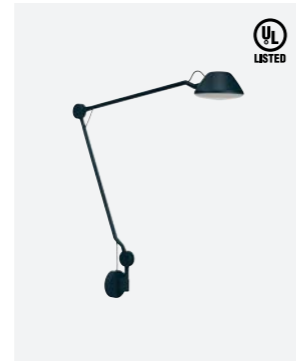
Design: Anne Qvist, 2017



Category: Table lamp
Height: 44 cm / 17.3 in
Width: 45 cm / 17.7 in
Colour: White, Black, Blue
Features: Tilttable, Swivel, Dimmable



Category: Table lamp (Plug-in)
Height: 45.3 cm / 17.8 in
Width: 45 cm / 17.7 in
Colour: White, Black, Blue
Features: Tilttable, Swivel, Dimmable



Category: Wall lamp
Height: 48.3 cm / 17.8 in
Width: 45 cm / 17.7 in
Colour: White, Black, Blue
Features: Tilttable, Swivel, Dimmable

AVION™

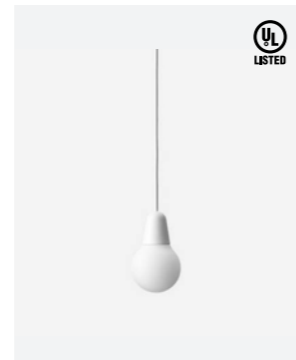
Design: Iskos-Berlin, 2012



Category: Pendant
Height: 34.2 cm / 13.5 in
Width: 85 cm / 33.5 in
Colour: White

BULB FICTION™

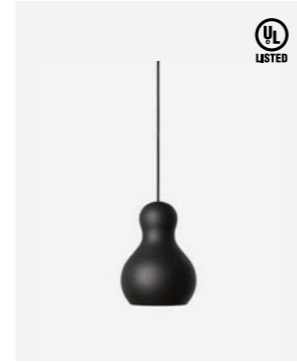
Design: KiBiSi, 2012



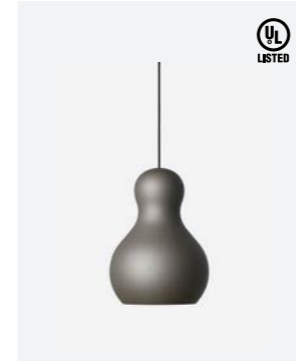
Category: Pendant
Model: P1
Height: 21 cm / 8.3 in
Diameter: 12.8 cm / 5 in
Colour: White

CALABASH™

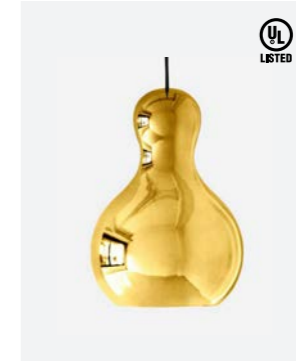
Design: Komplot Design, 2010



Category: Pendant
Model: P1
Height: 21 cm / 8.3 in
Diameter: 15.8 cm / 6.2 in
Colour: Gold, Silver, Grey Meteor, Black Meteor



Category: Pendant
Model: P2
Height: 30.5 cm / 12 in
Diameter: 22.4 cm / 8.8 in
Colour: Gold, Silver, Grey Meteor, Black Meteor



Category: Pendant
Model: P3
Height: 48.4 cm / 19 in
Diameter: 34 cm / 13.4 in
Colour: Gold, Silver

CARAVAGGIO™

Design: Cecilie Manz, 2005



Category: Pendant
Model: P0
Height: 14.5 cm / 5.7 in
Diameter: 11 cm / 4.3 in
Colour: BlackBlack, Opal



Category: Pendant
Model: P1
Height: 21.6 cm / 8.5 in
Diameter: 16.5 cm / 6.4 in
Colour: White, Black, BlackBlack, White (matt), Grey25, Grey45, Black (matt) Warm Silk, Archipelago Stone, Dark Sienna, Dark Ultramarine, Opal



Category: Pendant
Model: P2
Height: 33.7 cm / 13.2 in
Diameter: 25.8 cm / 10.1 in
Colour: White, Black, BlackBlack, White (matt), Grey25, Grey45, Black (matt) Warm Silk, Archipelago Stone, Dark Sienna, Dark Ultramarine, Opal



Category: Pendant
Model: P3
Height: 51.6 cm / 20.3 in
Diameter: 40 cm / 15.7 in
Colour: White, Black, BlackBlack, White (matt), Grey25, Grey45, Black (matt) Warm Silk, Archipelago Stone, Dark Sienna, Dark Ultramarine, Opal



Category: Pendant
Model: P4
Height: 70.2 cm / 27.6 in
Diameter: 55 cm / 21.6 in
Colour: White, Black, BlackBlack, White (matt), Grey25, Grey45, Black (matt)



CARAVAGGIO™ READ

Design: Cecilie Manz, 2005



Category: Table lamp
Model: 6502-P
Height: 50 cm / 19.6 in
Width: 31.4 cm / 12.3 in
Colour: White, Grey25, Black, Opal
Features: Tilttable, Swivel



Category: Floor lamp
Model: 6503-P
Height: 110 cm / 43.3 in
Width: 36.2 cm / 14.2 in
Colour: White, Grey25, Black, Opal
Features: Tilttable, Swivel



Category: Wall lamp
Model: 6504-P
Height: 20.6 cm / 8.1 in
Width: 35 cm / 13.7 in
Colour: White, Grey25, Black, Opal
Features: Tilttable, Swivel

CONCERT™

Design: Jørn Utzon, 2005



Category: Pendant
Model: P1
Height: 16.6 cm / 6.4 in
Diameter: 32 cm / 12.5 in
Colour: White



Category: Pendant
Model: P3
Height: 32 cm / 12.5 in
Diameter: 55 cm / 21.6 in
Colour: White

CROSS-PLEX™

Design: Bodil Kjær, 1961



Category: Table lamp
Model: T-300
Height: 30 cm / 11.8 in
Width: 40 cm / 15.8 in
Colour: Opal/Clear



Category: Table lamp
Model: T-500
Height: 50 cm / 19.7 in
Width: 20 cm / 7.9 in
Colour: Opal/Clear

DOGU™

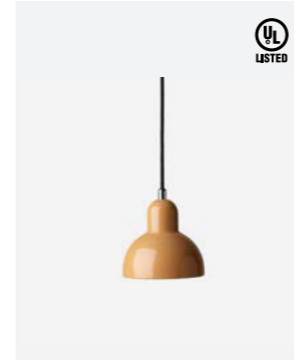
Design: Michael Geertsen, 2016



Category: Pendant
Model: P1
Height: 32.9 cm / 13 in
Diameter: 24 cm / 9.5 in
Material/Colour: Bone china/Gold, Bone china/Silver

KAISER idell™

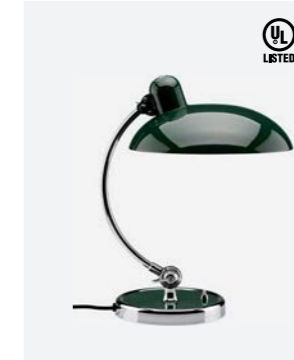
Design: Christian Dell, 1931



Category: Pendant
Model: 6722-P
Height: 15.5 cm / 6.1 in
Diameter: 14.5 cm / 5.7 in
Colour: Black, Russet red, Soft ochre, Smooth slate



Category: Pendant
Model: 6631-P
Height: 13.5 cm / 5.3 in
Diameter: 23.5 cm / 11.2 in
Colour: White, Black, Matt black, Ruby red



Category: Table lamp
Model: 6631-T Luxus
Height: 42.5 cm / 16.7 in
Diameter (shade): 23.5 cm / 11.2 in
Diameter (base): 19.4 cm / 7.6 in
Colour: White, Black, Matt black, Ruby red, Dark green, Matt black/Brass
Features: Tilttable



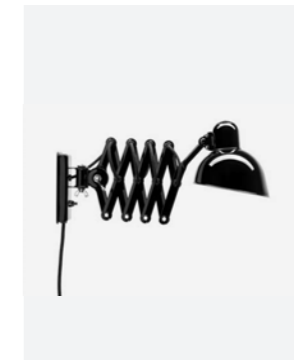
Category: Table lamp
Model: 6556-T
Height: 47 cm / 18.5 in
Diameter (shade): 21.5 cm / 8.5 in
Diameter (base): 18.5 cm / 7.3 in
Colour: White, Black, Matt black
Features: Tilttable



Category: Floor lamp
Model: 6580-F Luxus
Height: 125-135 cm / 49.2-53.1 in
Diameter (shade): 21.5 cm / 8.5 in
Diameter (base): 22.5 cm / 8.9 in
Colour: White, Black, Matt black
Features: Height adjustable, Swivel



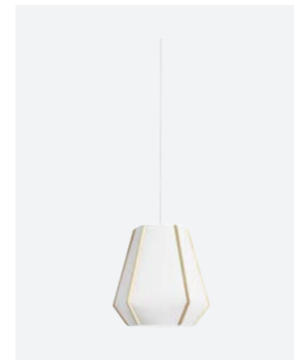
Category: Floor lamp
Model: 6556-F
Height: 125 cm / 49.2 in
Diameter (shade): 21.5 cm / 8.5 in
Diameter (base): 22.5 cm / 8.9 in
Colour: White, Black, Matt black
Features: Tilttable



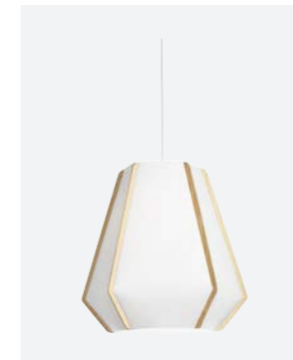
Category: Wall lamp
Model: 6718-W
Height (base): 14.8 cm / 5.8 in
Diameter (shade): 16.4 cm / 6.5 in
Width: 47-89 cm / 18.5-35 in
Colour: White, Black, Matt black
Features: Stretchable, Swivel

LULLABY™

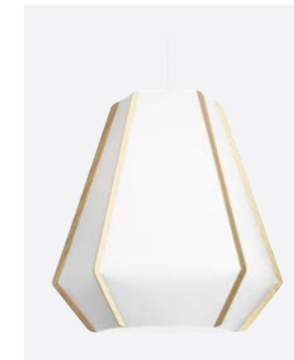
Design: Monica Förster, 2014



Category: Pendant
Model: P1
Height: 22.6 cm / 8.8 in
Diameter: 24 cm / 9.4 in
Material: Translucent (PE)/Ash



Category: Pendant
Model: P2
Height: 39.6 cm / 15.5 in
Diameter: 43 cm / 16.9 in
Material: Translucent (PE)/Ash



Category: Pendant
Model: P3
Height: 56 cm / 22 in
Diameter: 58.8 cm / 23.1 in
Material: Translucent (PE)/Ash

MINGUS™

Design: Cecilie Manz, 2011



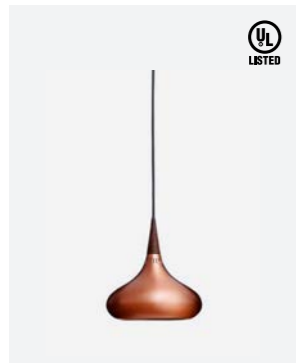
Category: Pendant
Model: P1
Height: 21.3 cm / 8.3 in
Diameter: 22 cm / 8.6 in
Colour: White, Dusty limestone, Nearly black, Very grey, Pale moss, Light celadon



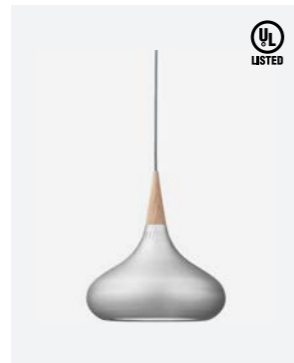
Category: Pendant
Model: P2
Height: 32 cm / 12.5 in
Diameter: 34 cm / 13.3 in
Colour: White, Dusty limestone, Nearly black, Very grey, Pale moss, Light celadon

ORIENT™

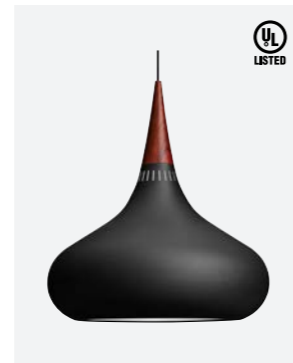
Design: Jo Hammerborg, 1963



Category: Pendant
Model: P1
Height: 24.5 cm / 9.6 in
Diameter: 22.5 cm / 8.8 in
Material/Colour: Aluminium/Oak, Black/Rosewood, Copper/Rosewood



Category: Pendant
Model: P2
Height: 37 cm / 14.5 in
Diameter: 34 cm / 13.3 in
Material/Colour: Aluminium/Oak, Black/Rosewood, Copper/Rosewood



Category: Pendant
Model: P3
Height: 54 cm / 21.2 in
Diameter: 50 cm / 19.6 in
Material/Colour: Aluminium/Oak, Black/Rosewood

PM-02

Design: Paul McCobb, 1950

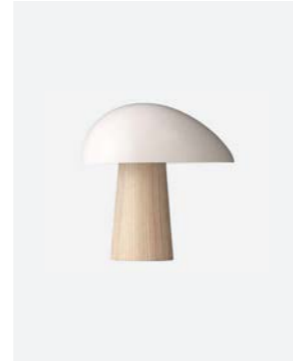


Category: Table lamp
Height: 31.4 cm / 12.3 in
Diameter: 13.6 cm / 5.3 in
Colour: Opal/Black, Opal/Brass



NIGHT OWL™

Design: Nikolai Wiig Hansen, 2015



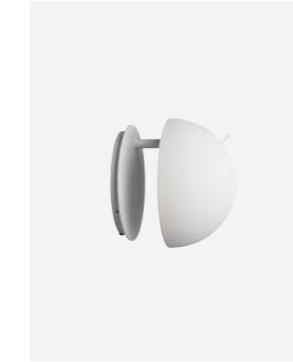
Category: Table lamp
Height: 23.9 cm / 9.4 in
Diameter: 23.5 cm / 9.2 in
Colour: Midnight blue, Smokey white, Midnight blue/Ash, Smokey white/Ash



Category: Table lamp
Height: 52 cm / 20.4 in
Width: 32 cm / 12.5 in
Colour: Alba, Nigra
Features: Tilttable, Swivel



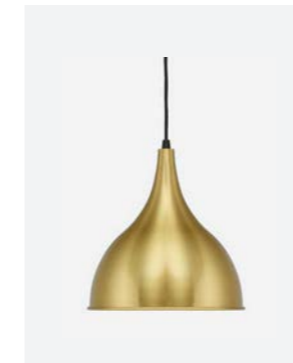
Category: Floor lamp
Height: 120 cm / 47.2 in
Width: 47 cm / 18.5 in
Colour: Nigra
Features: Tilttable, Swivel



Category: Wall lamp
Height: 21-29.5 cm / 8.2-11.6 in
Width: 21 cm / 8.2 in
Colour: Alba, Nigra
Features: Tilttable

SILHUET™

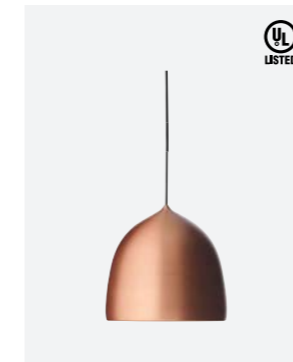
Design: Jo Hammerborg, 1977



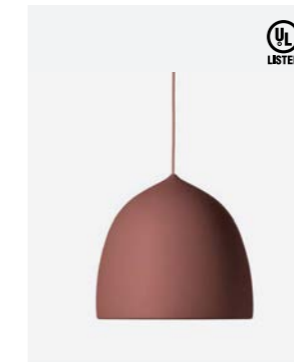
Category: Pendant
Model: P2
Height: 32.8 cm / 12.9 in
Diameter: 29.5 cm / 11.6 in
Colour: Brushed brass, Polished brass

SUSPENCE™

Design: GamFratesi, 2013



Category: Pendant
Model: P1
Height: 22.5 cm / 8.8 in
Diameter: 24 cm / 9.4 in
Colour: White, Light grey, Black, Copper



Category: Pendant
Model: P1.5
Height: 29.8 cm / 11.7 in
Diameter: 32 cm / 12.6 in
Colour: Light grey, Powder burgundy, Pale yellow

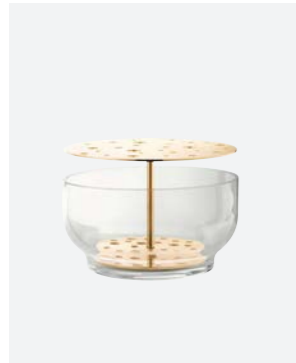


Category: Pendant
Model: P2
Height: 36 cm / 14.2 in
Diameter: 38.5 cm / 15.1 in
Colour: White, Light grey, Black, Copper

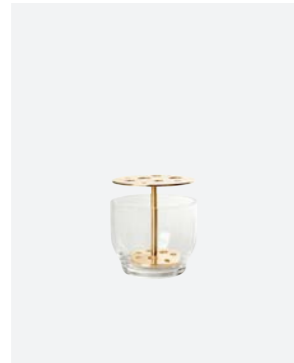


Category: Floor lamp
Model: Nomad
Height: 42.6 cm / 16.7 in
Diameter: 38.5 cm / 15.1 in
Colour: Opal/Grey, Opal/Red

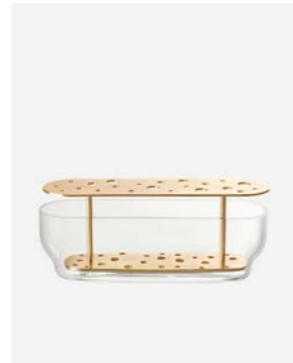
VASES



Model: Ikebana Vase
Designer: Jaime Hayon
Height: 15.5 cm / 6.1 in
Diameter: 24 cm / 9.4 in
Material: Glass/Brass



Model: Ikebana Vase Small
Designer: Jaime Hayon
Height: 13 cm / 5.1 in
Diameter: 12 cm / 4.7 in
Material: Glass/Brass



Model: Ikebana Vase Long
Designer: Jaime Hayon
Height: 13 cm / 5.1 in
Length: 33.5 cm / 13.2 in
Width: 9.5 cm / 3.7 in
Material: Glass/Brass



Model: Moon Eye Vase
Designer: Grethe Meyer
Height: 23 cm/9.1 in, 16 cm/6.3 in
Width: 16 cm/6.3 in, 13.5 cm/5.3 in
Depth: 8 cm/3.1 in, 8 cm/3.1 in
Colour: Clear and Smoked/Clear glass



Model: Ikeru Vase High
Designer: Jaime Hayon
Height: 23.9 cm / 9.4 in
Diameter: 16 cm / 6.3 in
Material: Forest green glass/Aluminium



Model: Ikeru Vase Low
Designer: Jaime Hayon
Height: 13.1 cm / 5.1 in
Diameter: 19 cm / 7.4 in
Material: Forest green glass/Aluminium

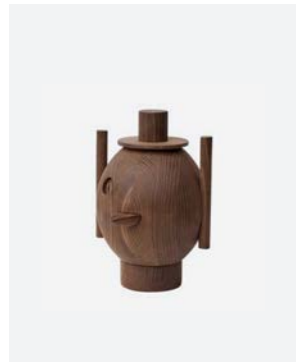


Model: High Vase
Designer: Jaime Hayon
Height: 30 cm / 11.8 in
Diameter: 16 cm / 6.2 in
Material: Glass/Cedar wood

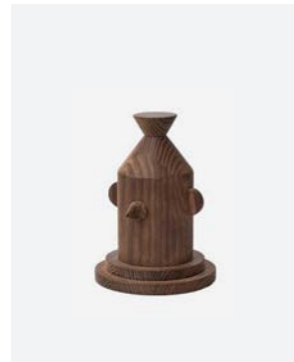


Model: Low Vase
Designer: Jaime Hayon
Height: 18.5 cm / 7.2 in
Diameter: 16 cm / 6.2 in
Material: Glass/Cedar wood

SCULPTURES



Model: Geo #1
Designer: Jaime Hayon
Height: 18.4 cm / 7.2 in
Diameter: 12.9 cm / 5 in
Material: Thermo darkened ash



Model: Geo #2
Designer: Jaime Hayon
Height: 15 cm / 5.9 in
Diameter: 10.3 cm / 4 in
Material: Thermo darkened ash

EARTHENWARE



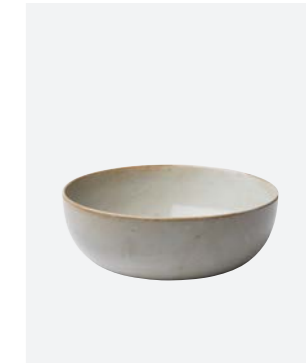
Model: Vase
Designer: Cecilie Manz
Height: 17.5 cm / 6.9 in
Diameter: 12 cm / 4.7 in
Colour: Moss grey, Tenmoku



Model: Jar Vase
Designer: Cecilie Manz
Height: 21 cm / 8.3 in
Diameter: 17.5 cm / 6.9 in
Colour: Pale grey



Model: Round Vase
Designer: Cecilie Manz
Height: 12 cm / 4.8 in
Diameter: 20 cm / 7.8 in
Colour: Pale grey



Model: Bowl
Designer: Cecilie Manz
Height: 10 cm / 3.9 in
Diameter: 26.5 cm / 10.4 in
Colour: Stone grey



Model: Light Tray
Designer: Cecilie Manz
Height: 6.5 cm / 2.6 in
Diameter: 30 cm / 11.8 in
Colour: Pale sakura

CANDLEHOLDERS



Model: Louise Candleholder
Designer: Grethe Meyer
Height: 2.1 cm / 0.8 in
Diameter: 6.9 cm / 2.7 in
Material: Silver plated stainless steel

CANDLEHOLDERS



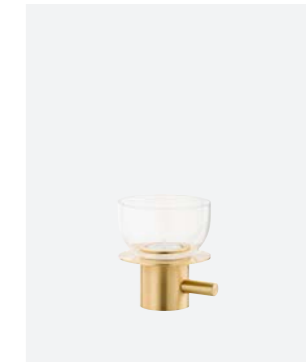
Model: Candleholder Single #1
Designer: Jaime Hayon
Height: 10.5 cm / 4.1 in
Diameter: 5 cm / 2 in
Colours: Brass, Terracotta



Model: Candleholder Single #2
Designer: Jaime Hayon
Height: 13 cm / 5.1 in
Diameter: 4 cm / 1.6 in
Colours: Brass, Terracotta



Model: Candleholder Large
Designer: Jaime Hayon
Height: 20 cm / 7.9 in
Diameter: 16 cm / 6.3 in
Material: Brass



Model: Tea Light
Designer: Jaime Hayon
Height: 15.5 cm / 6.1 in
Diameter: 10 cm / 3.9 in
Material: Brass/Glass

CUSHIONS



Model: Cushion
Designer: Jaime Hayon
Height: 37 cm / 14.6 in
Width: 58 cm / 22.8 in
Colour: Blue/Yellow



Model: Cushion
Designer: Aiayu
Height: 40 cm / 15.7 in
Width: 60 cm / 23.6 in
Colours: Anthracite, Oat



Model: Cushion Vertigo
Designer: Arne Jacobsen
Height: 50 cm / 19.7 in
Width: 50 cm / 19.7 in
Colour: Light grey



Model: Cushion Vertigo
Designer: Arne Jacobsen
Height: 40 cm / 15.7 in
Width: 60 cm / 23.6 in
Colour: Light grey



Model: Cushion Trapez
Designer: Arne Jacobsen
Height: 50 cm / 19.7 in
Width: 50 cm / 19.7 in
Colours: Dark grey, Midnight blue



Model: Cushion Trapez
Designer: Arne Jacobsen
Height: 40 cm / 15.7 in
Width: 60 cm / 23.6 in
Colours: Dark grey, Midnight blue

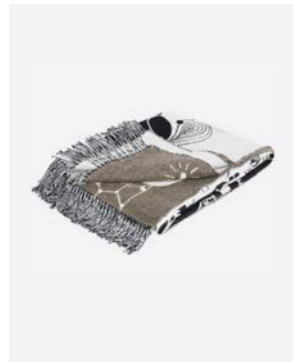


Model: Cushion Tassel
Designer: Arne Jacobsen
Height: 45 cm / 17.7 in
Width: 45 cm / 17.7 in
Colour: Ochre yellow



Model: Cushion Tassel
Designer: Arne Jacobsen
Height: 36 cm / 14.1 in
Width: 56 cm / 22 in
Colour: Ochre yellow

THROWS



Model: Throw
Designer: Jaime Hayon
Length: 200 cm / 78.7 in
Width: 130 cm / 51.2 in
Colour: Gold



Model: Throw
Designer: Jaime Hayon
Length: 205 cm / 80.7 in
Width: 130 cm / 51.2 in
Colour: Blue



Model: Throw Cashmere
Designer: Fritz Hansen
Length: 190 cm / 74.8 in
Width: 120 cm / 47.2 in
Colour: Natural brown



Model: Classic Throw
Designer: Fritz Hansen
Length: 160 cm / 70.9 in
Width: 130 cm / 51.2 in
Colour: Grey

COAT RACKS



Model: Coat Tree™ Wall
Designer: Sidse Werner
Height: 104 cm / 40.9 in
Width: 46 cm / 18.1 in
Depth: 30 cm / 11.8 in
Colours: Light grey, Dark blue



Model: Coat Tree™
Designer: Sidse Werner
Height: 193 cm / 76 in
Diameter: 65 cm / 25.6 in
Depth: 30 cm / 11.8 in
Colour: Chrome
Note: Furniture assortment

TRAY



Model: Tray Stack #4
Designer: Wednesday Architecture
Height: 6 cm / 2.3 in
Diameter: 35 cm / 13.8 in
Material: Ash veneer

BOXES



Model: Leather Box Large
Designer: August Sandgren
Height: 8.5 cm / 3.3 in
Length: 36 cm / 14.1 in
Width: 26 cm / 10.2 in
Material: Pure leather/Linen



Model: Leather Box Small
Designer: August Sandgren
Height: 6.5 cm / 2.5 in
Length: 26 cm / 10.2 in
Width: 20.5 cm / 8 in
Material: Pure leather/Linen

DESK



Model: Wave
Designer: Hiromichi Konno
Height: 12 cm / 4.7 in
Width: 18 cm / 7.1 in
Depth: 16 cm / 6.3 in
Material: Soft coated steel/Leather
Colour: Black

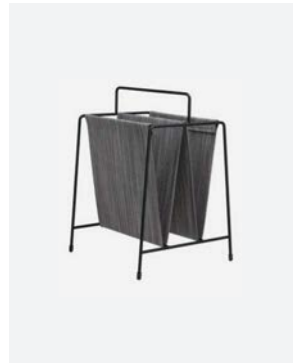


Model: Buckets
Designer: Mia Lagerman
Height: 12 cm / 4.7 in
Width: 30 cm / 11.8 in
Depth: 10.5 cm / 4.1 in
Material: Harness leather
Colour: Brown



Model: Desk Pad
Designer: Hiromichi Konno
Width: 55 cm / 21.7 in
Depth: 40 cm / 15.7 in
Material: Royal Nubuck leather
Colour: Lava grey

MAGAZINE HOLDER



Model: Magazine Holder
 Designer: Paul McCobb
 Height: 45 cm / 17.7 in
 Width: 33 cm / 13 in
 Depth: 33 cm / 13 in
 Material: Black powder coated steel/
 Black-white textile

POUFS



Model: Pouf Large
 Designer: Cecilie Manz
 Height: 29 cm / 11.4 in
 Diameter: 60 cm / 23.6 in
 Colours: Concrete, Rust, Dusty rose



Model: Pouf Small
 Designer: Cecilie Manz
 Height: 24 cm / 9.5 in
 Diameter: 50 cm / 19.7 in
 Colours: Slate, Yellow

SIDE TABLES



Model: Tray Table
 Designer: Fritz Hansen
 Height: 42 cm / 16.5 in
 Diameter: 45 cm / 17.7 in
 Materials: Oak, Black lacquered oak



Model: Tray Table Large
 Designer: Fritz Hansen
 Height: 39 cm / 16.5 in
 Diameter: 60 cm / 17.7 in
 Materials: Black lacquered oak



Model: AJ Trolley
 Designer: Arne Jacobsen
 Height: 54.7 cm / 21.5 in
 Width: 67 cm / 26.5 in
 Depth: 59 cm / 23 in
 Material: Black coloured ash/
 Stainless steel

MIRRORS



Model: Table Mirror
 Designer: Paul McCobb
 Height: 51 cm / 20.1 in
 Width: 32 cm / 12.6 in
 Depth: 25 cm / 9.8 in
 Materials: Black powder coated steel/
 White Carrara marble



Model: Wall Mirror
 Designer: Paul McCobb
 Height: 157 cm / 61.8 in
 Width: 39-75 cm / 15.3-29.5 in
 Depth: 22 cm / 8.7 in
 Materials: Black powder coated steel/
 White Carrara marble or Green Forest
 Marble

CLOCK



Model: Wall Clock
 Designer: Mia Lagerman
 Height: 48 cm / 18.9 in
 Width: 48 cm / 18.9 in
 Material: White paper

STOOLS



Model: Dot™
 Designer: Arne Jacobsen
 Height: 46 cm / 18.1 in
 Width: 34 cm / 13.4 in
 Depth: 34 cm / 13.4 in
 Colours: Black/Powder coated black,
 Walnut/Chrome



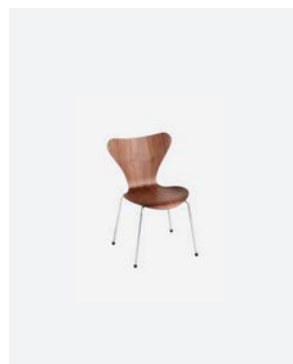
Model: High Dot™
 Designer: Arne Jacobsen
 Height: 65 cm / 25.6 in
 Width: 44 cm / 17.3 in
 Depth: 44 cm / 17.3 in
 Colours: Black/Powder coated black,
 Walnut/Chrome

BASKET

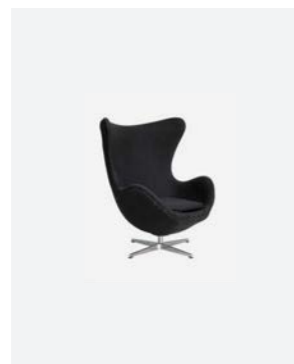


Model: Basket
 Designer: Benjamin Hubert
 Height: 36.5 cm / 14.4 in
 Length: 53 cm / 20.8 in
 Width: 37 cm / 14.6 in
 Material: Ash veneer

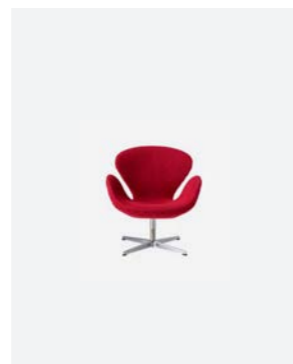
MINIATURES



Model: Miniature Series 7™
 Designer: Arne Jacobsen
 Height: 13 cm / 5.1 in
 Width: 8.5 cm / 3.3 in
 Colours: Black, Opium red, Walnut

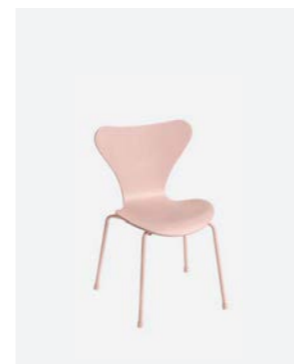


Model: Miniature Egg™
 Designer: Arne Jacobsen
 Height: 16.5 cm / 6.4 in
 Width: 13.5 cm / 5.3 in
 Colours: Black, Red



Model: Miniature Swan™
 Designer: Arne Jacobsen
 Height: 9 cm / 3.5 in
 Width: 13.5 cm / 5.3 in
 Colours: Black, Red

CHILDREN'S CHAIRS



Model: Series 7™ Children's Chair
 Designer: Arne Jacobsen
 Height: 60 cm / 23.6 in
 Seat height: 34 cm / 13.3 in
 Width: 40 cm / 15.7 in
 Depth: 42 cm / 16.5 in
 Colours: Ai blue, White, Rose



Model: Series 7™ Junior
 Designer: Arne Jacobsen
 Height: 79 cm / 31.1 in
 Seat height: 52 cm / 20.4 in
 Width: 42 cm / 16.5 in
 Depth: 44 cm / 17.3 in
 Colour: Black

PRODUCT LOCATOR

FURNITURE:

Alphabet Sofa™ Series (46, 47, 68, 99)
 Analog™ (107)
 Ant™ (28, 29, 50, 51, 81)
 Bar Table Series (111)
 China Chair™ (17, 82)
 Coffee Table Series (71, 102)
 Drop™ (24, 25, 72, 81)
 Egg™ (10, 11, 38, 39, 91)
 Essay™ (26, 27, 32, 33, 54, 108)
 Favn™ (62, 76, 98)
 FH125 (50, 51, 107)
 Fred™ (18, 19, 93)
 Fri™ (48, 49, 76, 92)
 Grand Prix™ (45, 68, 74, 81)
 Join™ (34, 103)
 Lily™ (4, 20, 819)
 Lissoni Sofa™ (44, 96)
 Little Friend™ (57, 63, 102)
 Little Giraffe™ (32, 33, 54, 87)
 Lune™ (18, 48, 100)
 NAP™ (85)
 NO1™ (36, 37, 82)
 NO2™ Recycle (58, 59, 83)
 Oksen™ (44, 91)
 Oxford™ Classic (86)
 Oxford™ Premium (55, 70, 87)
 PAIR™ (84)
 PK8™ (88)
 PK9™ (21, 88)
 PK11™ (88)
 PK20™ (94)
 PK22™ (23, 94)
 PK24™ (95)
 PK25™ (8, 9, 94)
 PK26™ (97)
 PK31™ (95, 97)
 PK33™ (89)
 PK40™ (109)
 PK51™ (111)
 PK54™ (21, 28, 29, 109)
 PK54A™ (28, 29, 109)
 PK55™ (111)
 PK58™ (109)
 PK61™ (8, 9, 44, 48, 105)
 PK61A™ (105)
 PK62™ (16, 104)
 PK63™ (11, 52, 61, 104)
 PK63A™ (104)
 PK65™ (105)
 PK71™ (105)
 PK80™ (8, 9, 95)
 PK81™ (22, 95)
 PK91™ (9, 89)
 Planner™ Coffee Tables (19, 44, 46, 62, 103)
 Planner™ Shelving (6, 7, 9, 36, 39, 58, 112)
 Plenum™ (60, 61, 75, 101)
 Pluralis™ (6, 55, 110)
 Pot™ (77, 90)
 Ro™ (42, 43, 76, 92)
 Ro™ Sofa (98)
 Sammen™ (62, 68, 82)
 Series 7™ (6, 14, 15, 26, 27, 63, 66, 73, 76, 77, 80)
 Series 3300™ (90, 96)
 Swan™ (10, 21, 31, 34, 71, 90)
 Swan Sofa™ (35, 97)
 Table Series (4, 14, 15, 25, 37, 64, 65, 106)
 VIA57™ (56, 57, 69, 93)
 Vico Duo (64, 65, 82)

LIGHTING:

Aeon Rocket™ (114)
 AQ01™ (58, 114)
 Avion™ (22, 114)
 Bulb Fiction™ (114)
 Calabash™ (45, 115)
 Caravaggio™ (15, 69, 77, 115)
 Caravaggio™ Read (31, 38, 68, 116)
 Concert™ (29, 116)
 Cross-Plex™ (34, 40, 44, 116)
 Dogu™ (116)
 KAISER idell™ (6, 9, 11, 13, 43, 48, 54, 57, 63, 68, 117)
 Lullaby™ (117)
 Mingus™ (118)
 Night Owl™ (118)
 Orient™ (21, 27, 74, 118)
 PM-02 (30, 118)
 Radon™ (119)
 Silhuet (41, 119)
 Suspence™ (37, 119)

ACCESSORIES:

AJ Trolley (842, 125)
 Basket (125)
 Buckets (55, 123)
 Candleholder Large (44, 52, 121)
 Candleholder Single #1 (15, 121)
 Candleholder Single #2 (15, 42, 121)
 Classic Throw (122)
 Coat Tree™ (123)
 Coat Tree™ Wall (30, 123)
 Cushion (Aiayu) (122)
 Cushion (Jaime Hayon) (122)
 Cushion Tassel (122)
 Cushion Trapez (18, 122)
 Cushion Vertigo (122)
 Desk Pad (123)
 Dot™ (89, 125)
 Earthenware (20, 32, 33, 42, 45, 47, 51, 54, 63, 121)
 Geo #1 (52, 120)
 Geo #2 (52, 54, 120)
 Happy Hook (123)
 High Dot™ (53, 63, 89, 125)
 High Vase (120)
 Ikebana (16, 21, 22, 120)
 Ikebana Long (16, 120)
 Ikebana Small (8, 9, 16, 120)
 Ikeru High (30, 120)
 Ikeru Low (26, 35, 120)
 Leather Box Large (123)
 Leather Box Small (123)
 Louise Candleholder (15, 27, 50, 120)
 Low Vase (120)
 Magazine Holder (31, 124)
 Miniature Egg™ (124)
 Miniature Series 7™ (44, 124)
 Miniature Swan™ (124)
 Moon Eye Vase (36, 120)
 Wall Mirror (31, 124)
 Pouf Large (53, 124)
 Pouf Small (34, 61, 62, 124)
 Rugs (38, 39, 42, 43, 113)
 Series 7™ Children's Chair (125)
 Series 7™ Junior (125)
 Table Mirror (124)
 Tea Light (121)
 Throw (Blue) (122)
 Throw (Gold) (122)
 Throw Cashmere (122)
 Tray Stack #4 (53, 123)
 Tray Table (19, 38, 39, 102, 125)
 Tray Table Large (57, 102, 125)
 Wall Clock (124)
 Wave (30, 123)

HEADQUARTERS

FRITZ HANSEN A/S
 Allersøvej 8
 3450 Allersø
 Denmark
 Tel: +45 48 17 23 00

GET IN TOUCH

SALES - ASIA & OCEANIA
 customerserviceasia@fritzhanzen.com
 Tel: +81 3 5778 3100

SALES - EUROPE
 salesupport@fritzhanzen.com
 Tel: +45 70 80 70 90

SALES - NORTH AMERICA
 info@fritzhanzen.com
 Tel: +001 212 219 3226

PRESS - GLOBAL
 press@fritzhanzen.com
 Tel: +45 25 19 07 03

LEARN MORE

NEWSLETTER
 Sign up at:
 fritzhanzen.com/newsletter

DOWNLOADS
 Find 2D & 3D files, imagery,
 product facts and much more at:
 downloads.fritzhanzen.com

INSTAGRAM
 @fritzhanzen

PINTEREST
 Fritz Hansen™

FACEBOOK
 Fritz Hansen

LINKEDIN
 Fritz Hansen

THANKS TO

A_Design, vahl+nikolaisen,
 Dansk form, Boho habits, Sunday-s
 gallery, gallery pi, Fil de fer, Beau
 march, Jacob grønbech, V1, Etage
 projects, Emil Alenius Boserup,
 studio X viaduct, Adorno, Anders
 Scrmn Meisner/Hans Alf Gallery,
 Anne Black, Atelier Plateau, Birgitte
 Due Madsen, Cappelen Dimyr,
 Durup, File Under Pop, Hein Studio,
 Helle Mardahl, Helle Thygesen Art
 & Antiques, Jesper Packness, Julie
 Lænkholm, Karakter Copenhagen,
 Kusiner, Kvadrat, Les Gens Heureux,
 Matias Moellenbach, Nina Nørgaard,
 Nordic Modern, Paustian, Sacre
 Coeur, Skagerak, Stelton, Tilde
 Grynnerup, Tina Marie Cph, Yume

FRITZ HANSEN

FURNITURE LIGHTING
NG ACCESSORIES F
FURNITURE LIGHTING
G ACCESSORIES FU
URNITURE LIGHTING