

Cat. A

Cat. A

Marluch

Snob

Matala

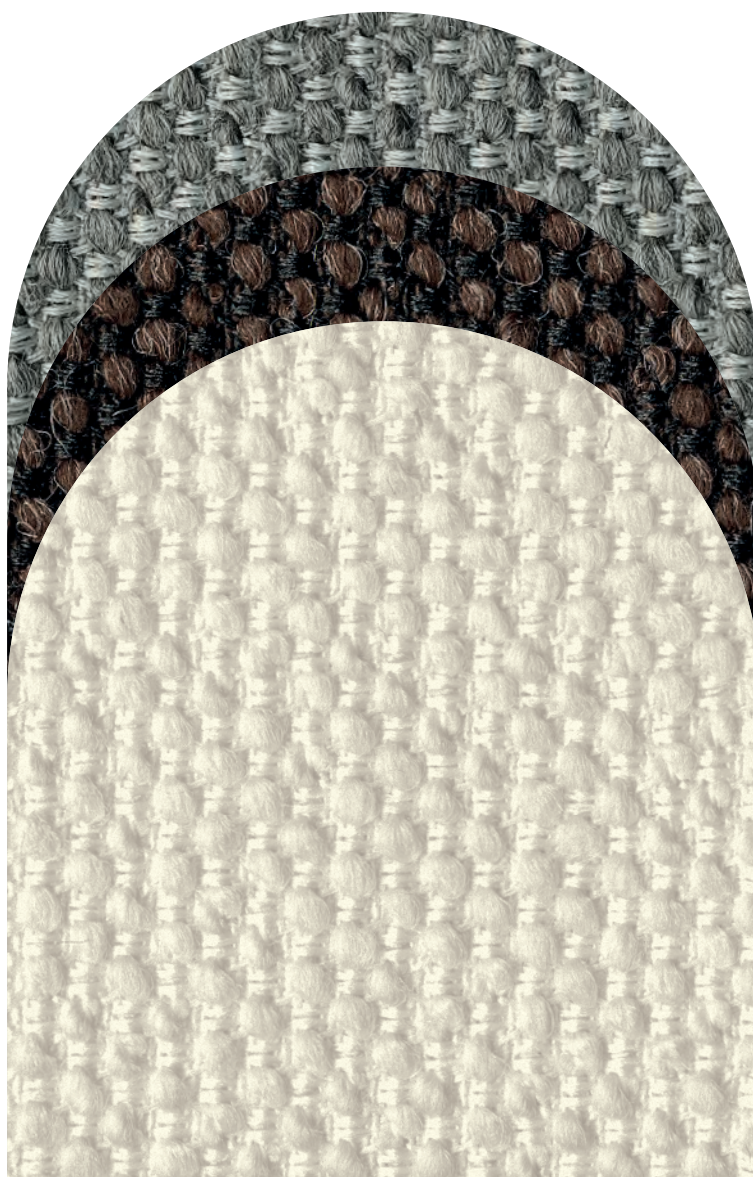
Bull

bolzan

cat. **A**

bolzan

MARLUCH



COMPOSITION

38% acrylic
28% polyester
20% cotton
14% wool

**COLOUR FASTNESS
TO LIGHT**

Note 5-6
UNI EN ISO 105-B02

PILLING

Note 5
UNI EN ISO 12945-2

MARTINDALE

100.000 rubs
UNI EN ISO 12947-2

FIRETEST

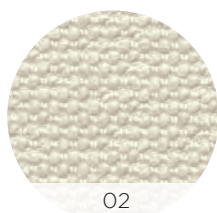
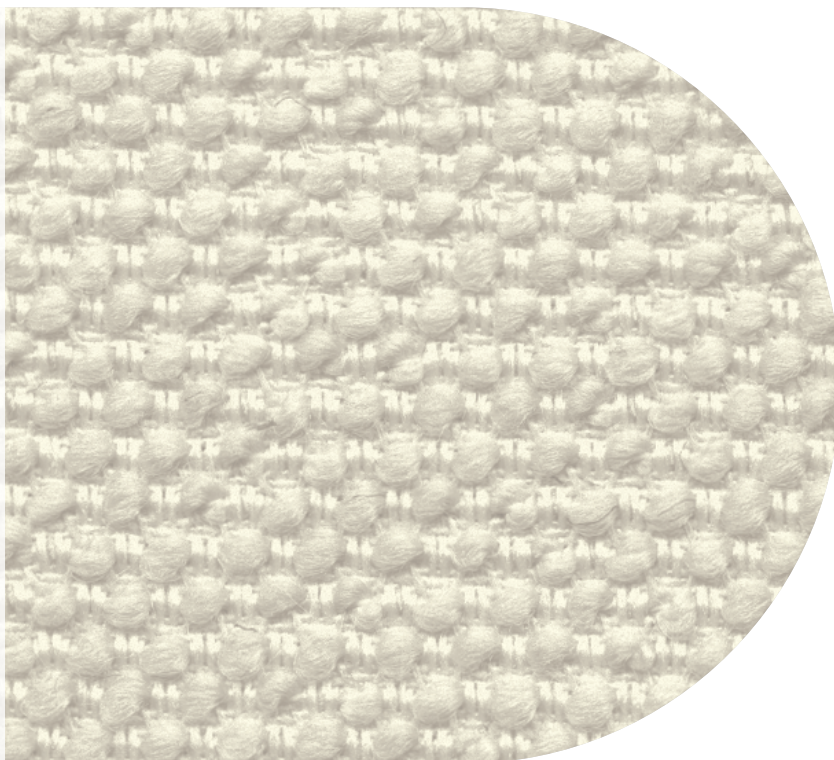
EN 1021 part 1-2
UNI 9175 classe 11M
BS5852 source 0 and 1

CARE

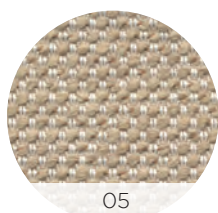


NOTES

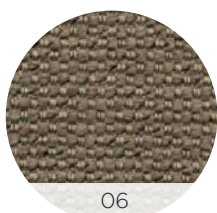
Slight differences in colour may occur



02



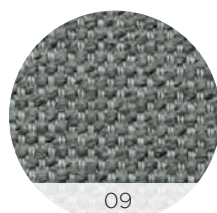
05



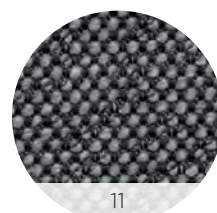
06



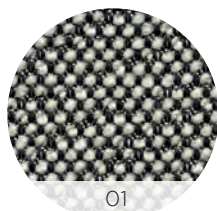
07



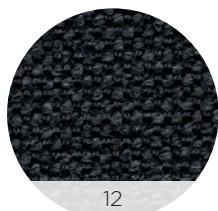
09



11



01



12

SNOB



COMPOSITION

50% polyester
50% cotton

**COLOUR FASTNESS
TO LIGHT**

Note 5-6
UNI EN ISO 105-B02

PILLING

Note 5
UNI EN ISO 12945-2

MARTINDALE

100.000 rubs
UNI EN ISO 12947-2

FIRETEST

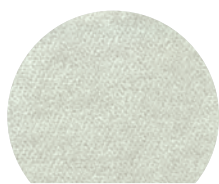
EN 1021 part 1-2
UNI 9175 classe 1IM
BS5852 source 0 and 1

CARE



NOTES

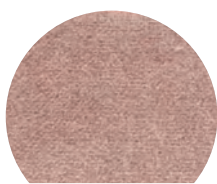
Slight differences in colour may occur



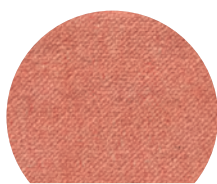
1035



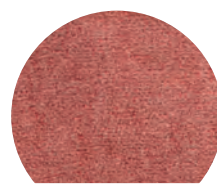
1033



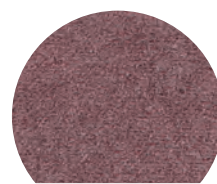
1012



1013



1014



1015



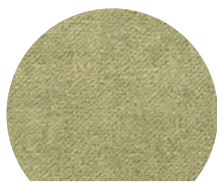
1022



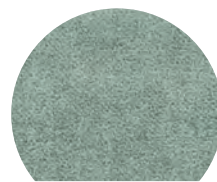
1029



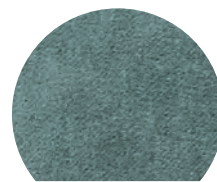
1003



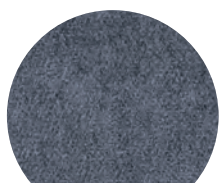
1002



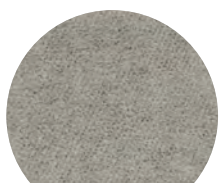
1019



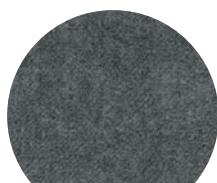
1020



1009

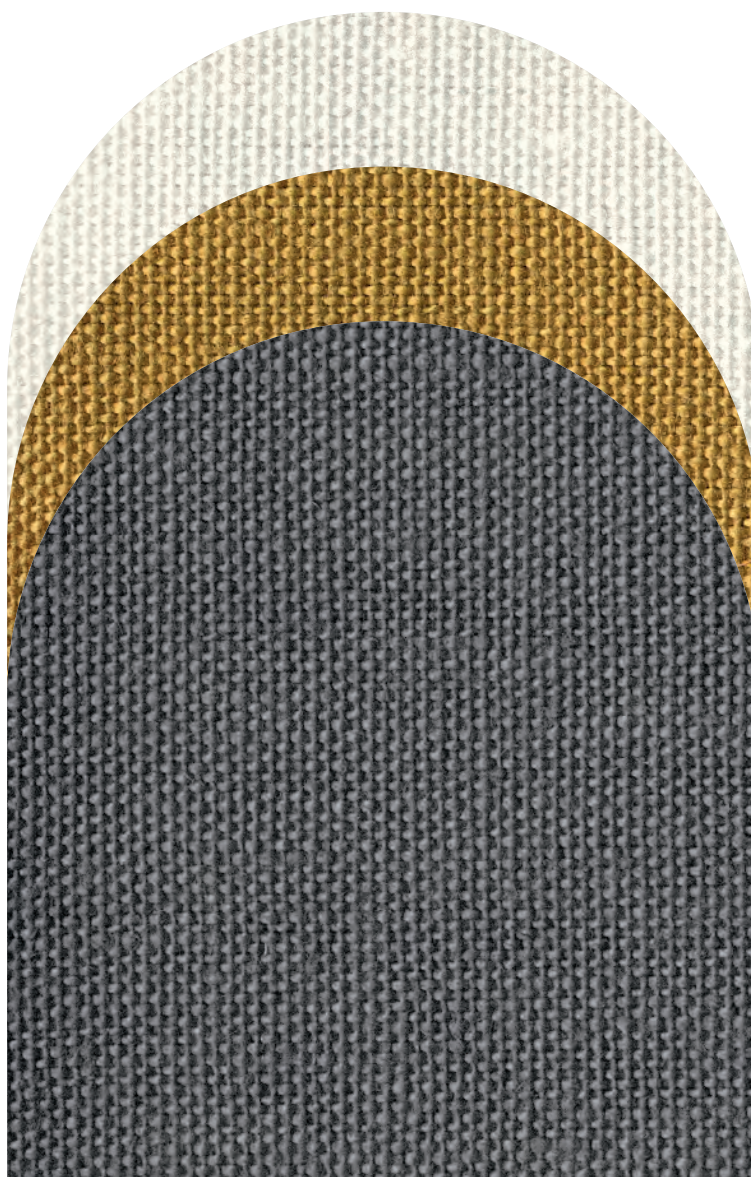


1036



1038

MATALA



COMPOSITION

82% linen
18% cotton

**COLOUR FASTNESS
TO LIGHT**

Note 4
UNI EN ISO 105-B02

PILLING

Note 4 @ 2.000
UNI EN ISO 12945-2

MARTINDALE

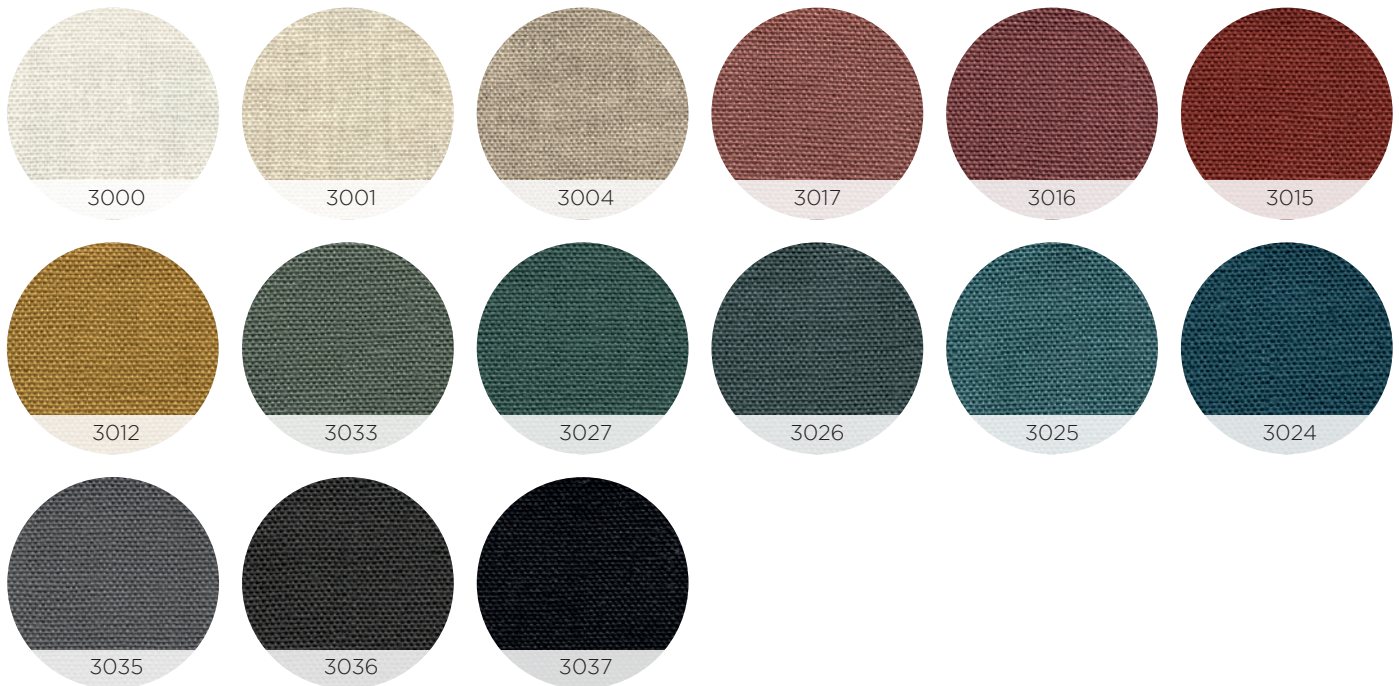
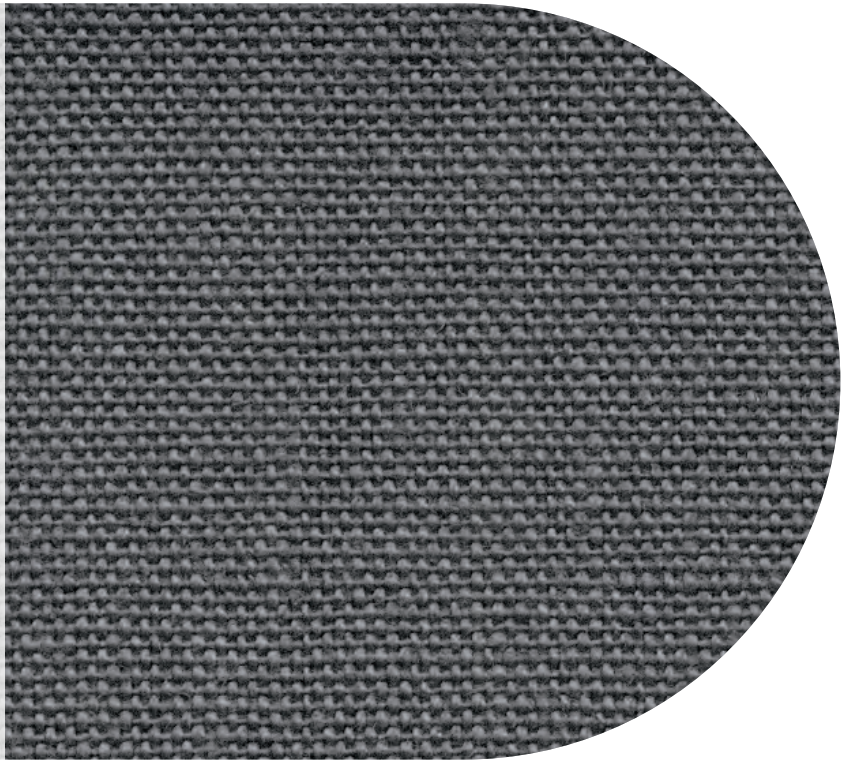
35.000 rubs
UNI EN ISO 12947-2

CARE



NOTES

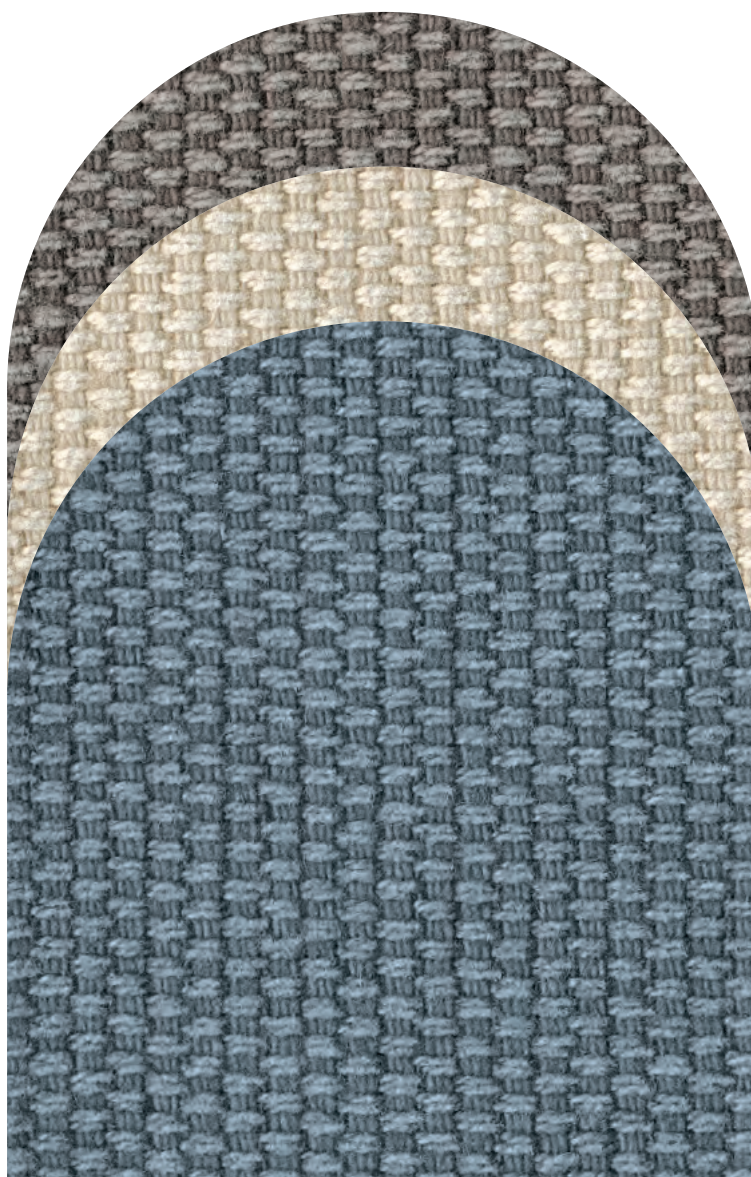
Slight differences in colour may occur



cat. **A**

bolzan

BULL



COMPOSITION

100% cotton

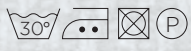
PILLING

Note 5 @ 2.000
UNI ENI ISO 12945-2

MARTINDALE

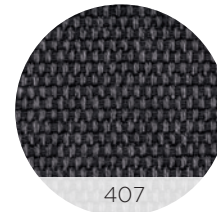
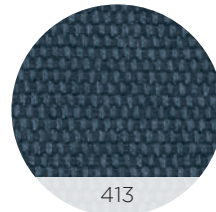
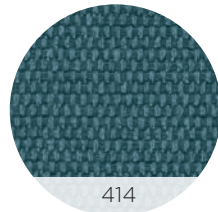
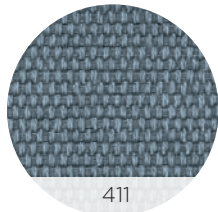
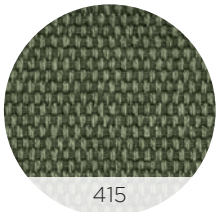
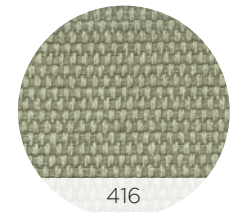
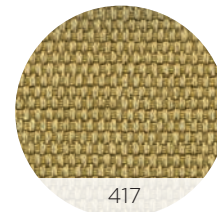
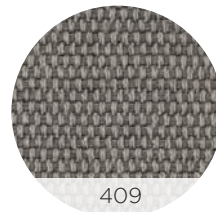
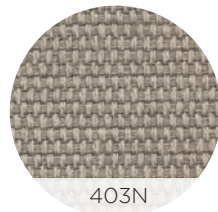
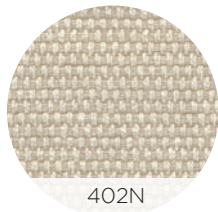
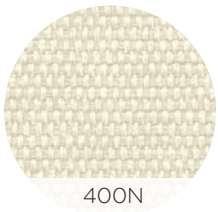
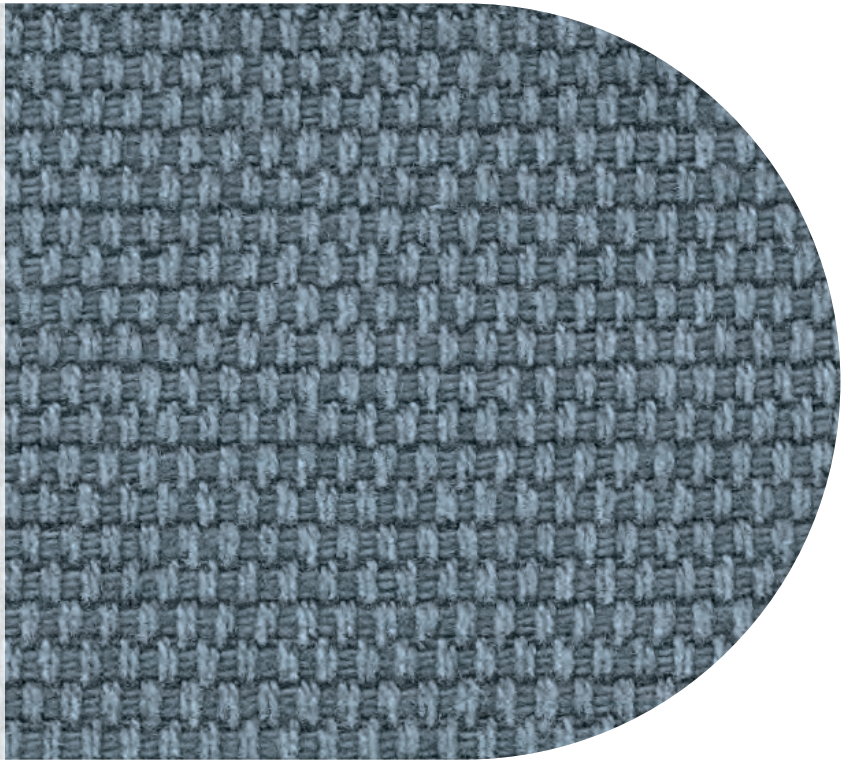
30.000 rubs
UNI ENI ISO 12947-2

CARE



NOTES

Slight differences in colour may occur





bolzan