

O

Textile Category 0

MENU Bouclé

Textile

Price category 0
Manufacturer Dolce Vita
Materials 78% Acrylic,
20% Polyester, 2% Viscose
Martindale 60.000
Lightfastness 5-7
Pilling 4



MENU Bouclé

Textile

Price category 0
Manufacturer Dolce Vita
Materials 78% Acrylic,
20% Polyester, 2% Viscose
Martindale 60.000
Lightfastness 5-7
Pilling 4



02



06



08



16

1

Textile Category 1

Champion

Textile

Price category 1
Manufacturer JAB
Materials 100% Polyester
Martindale 70.000
Lightfastness 5



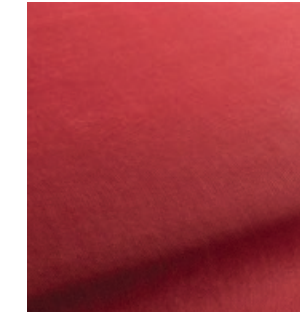
Champion

Textile

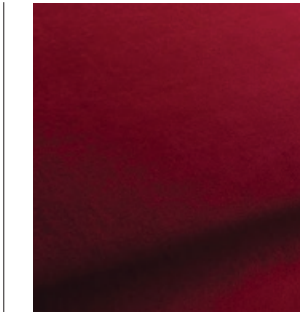
Price category 1
Manufacturer JAB
Materials 100% Polyester
Martindale 70.000
Lightfastness 5



1-3114-010



1-3114-011



1-3114-012



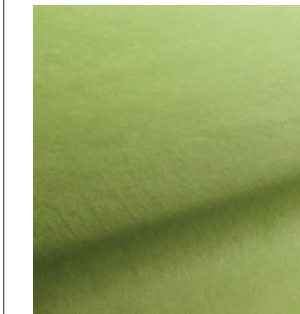
1-3114-020



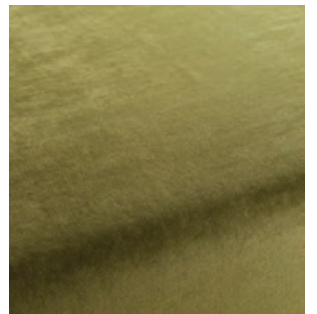
1-3114-021



1-3114-022



1-3114-031



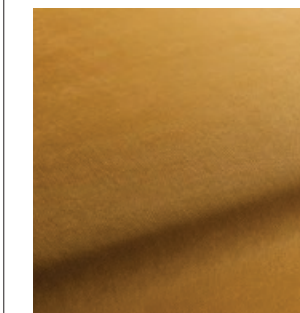
1-3114-032



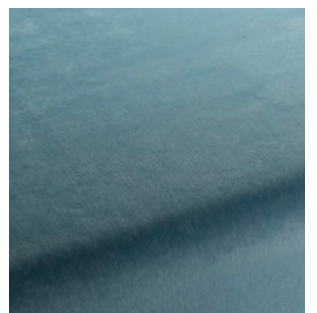
1-3114-035



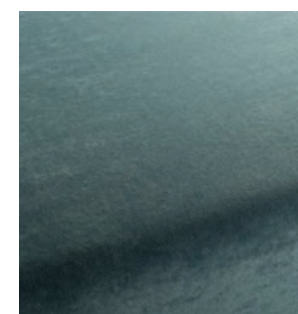
1-3114-040



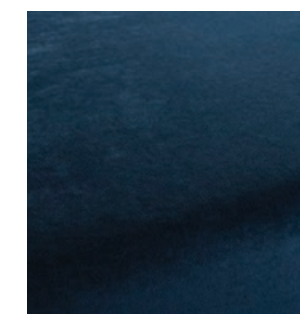
1-3114-041



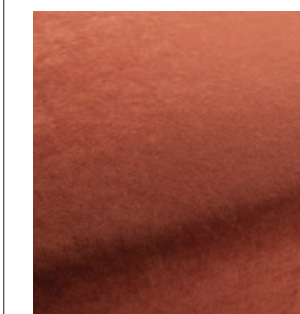
1-3114-050



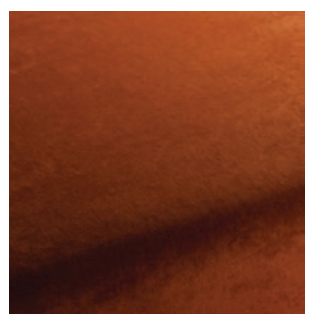
1-3114-051



1-3114-055



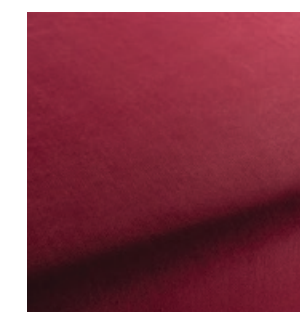
1-3114-060



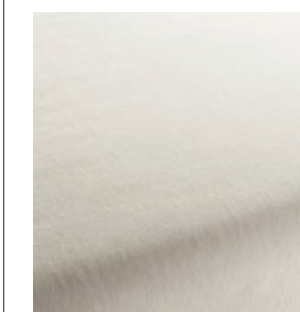
1-3114-061



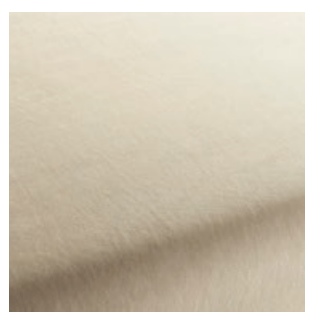
1-3114-062



1-3114-064



1-3114-070

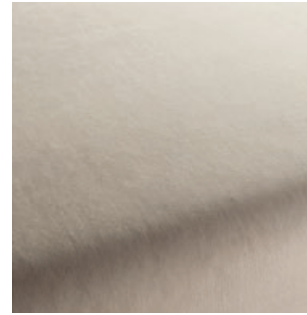


1-3114-071

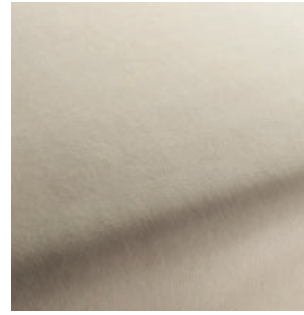
Champion

Textile

Price category 1
Manufacturer JAB
Materials 100% Polyester
Martindale 70.000
Lightfastness 5



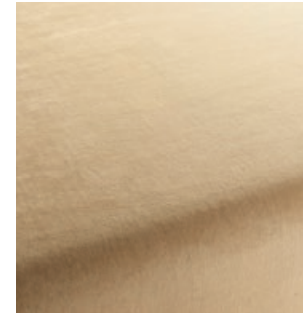
1-3114-072



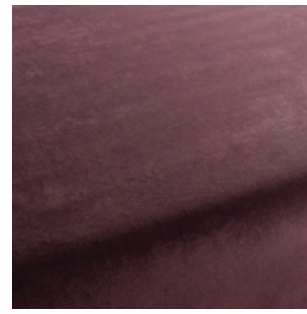
1-3114-073



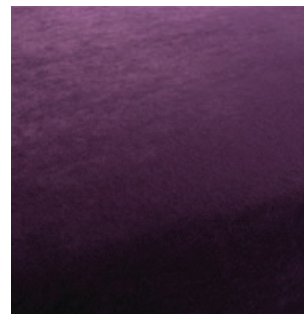
1-3114-074



1-3114-075



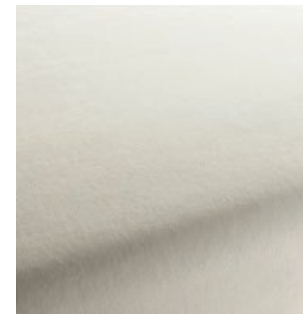
1-3114-080



1-3114-081



1-3114-082



1-3114-090



1-3114-092

Champion

Textile

Price category 1
Manufacturer JAB
Materials 100% Polyester
Martindale 70.000
Lightfastness 5



Champion

Textile

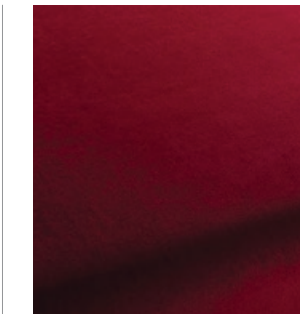
Price category 1
Manufacturer JAB
Materials 100% Polyester
Martindale 70.000
Lightfastness 5



1-3114-010



1-3114-011



1-3114-012



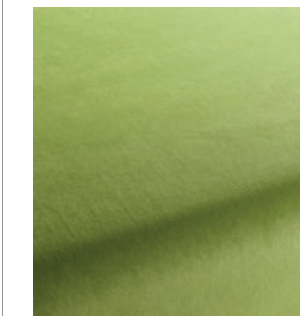
1-3114-020



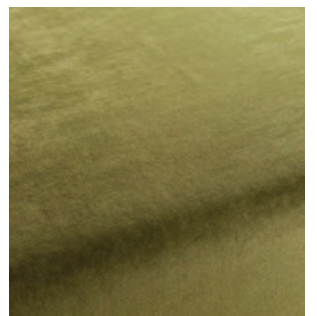
1-3114-021



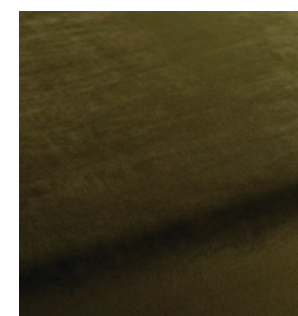
1-3114-022



1-3114-031



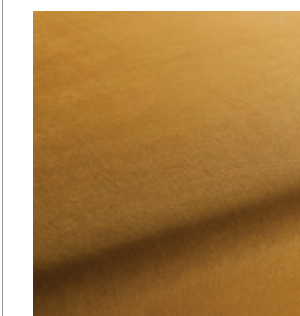
1-3114-032



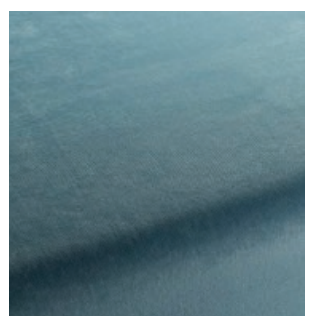
1-3114-035



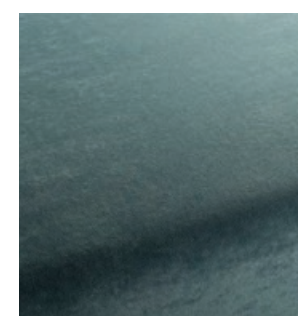
1-3114-040



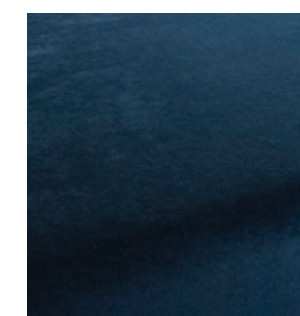
1-3114-041



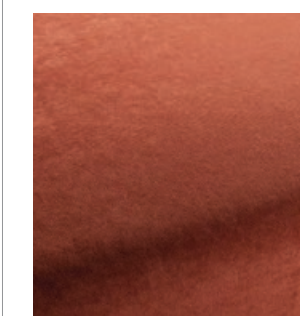
1-3114-050



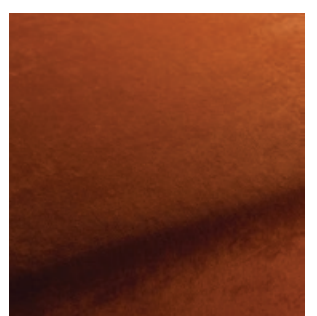
1-3114-051



1-3114-055



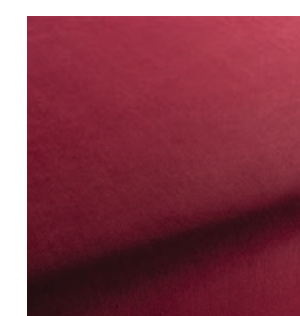
1-3114-060



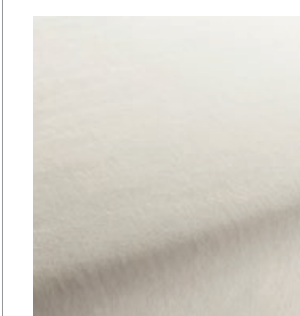
1-3114-061



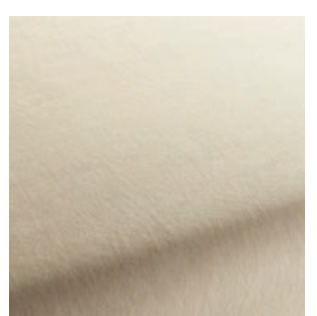
1-3114-062



1-3114-064



1-3114-070

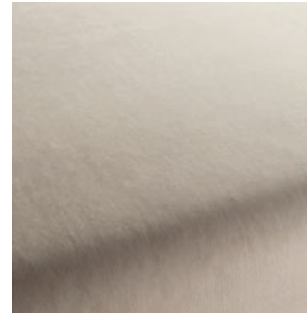


1-3114-071

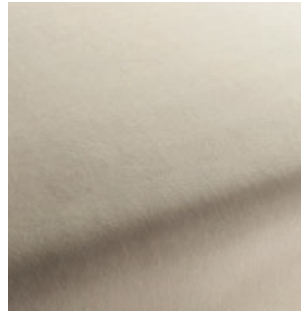
Champion

Textile

Price category 1
Manufacturer JAB
Materials 100% Polyester
Martindale 70.000
Lightfastness 5



1-3114-072



1-3114-073



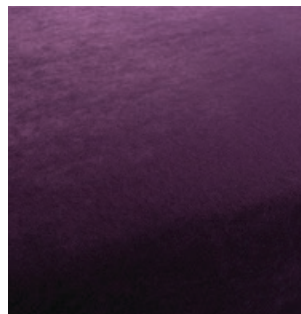
1-3114-074



1-3114-075



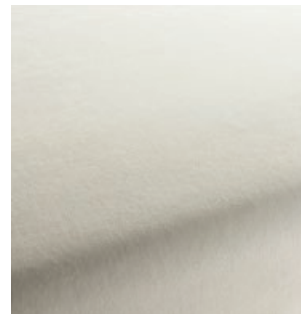
1-3114-080



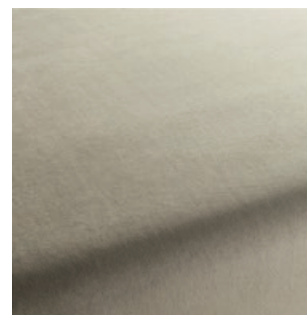
1-3114-081



1-3114-082



1-3114-090



1-3114-092

Hot Madison Reboot

Textile

Price category 1
Manufacturer JAB
Materials 63% Cotton, 37% Linen
Martindale 55.000
Lightfastness 4-5
Pilling 4-5



Hot Madison Reboot

Textile

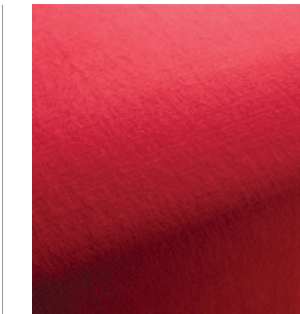
Price category 1
Manufacturer JAB
Materials 63% Cotton, 37% Linen
Martindale 55.000
Lightfastness 4-5
Pilling 4-5



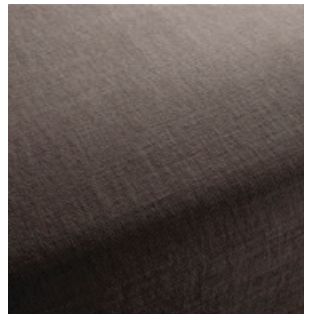
CH1249-011



CH1249-012



CH1249-013



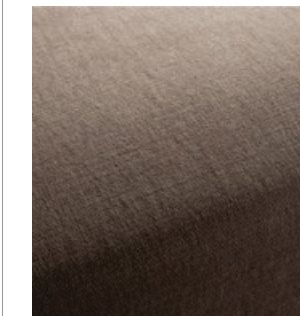
CH1249-020



CH1249-021



CH1249-022



CH1249-023



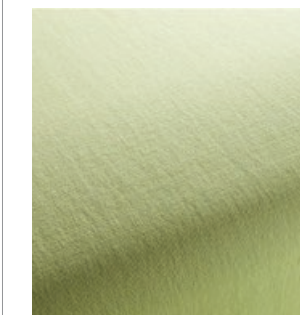
CH1249-037



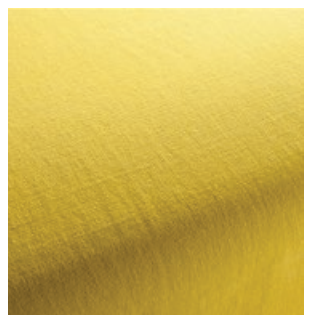
CH1249-038



CH1249-039



CH1249-043



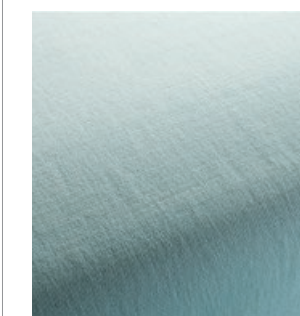
CH1249-045



CH1249-046



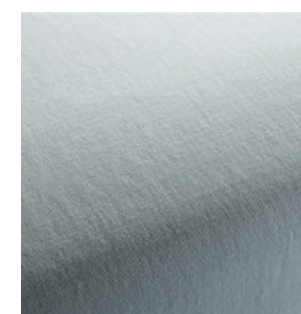
CH1249-046



CH1249-050



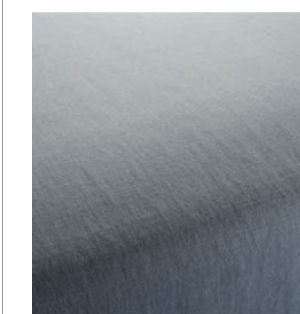
CH1249-052



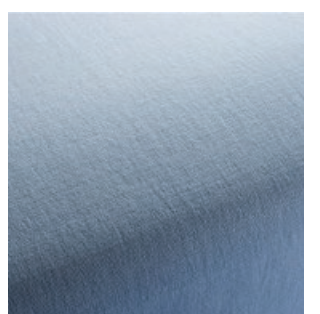
CH1249-053



CH1249-055



CH1249-056



CH1249-059

Hot Madison Reboot

Textile

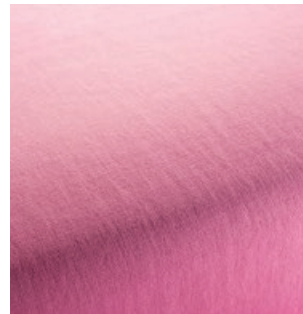
Price category 1
Manufacturer JAB
Materials 63% Cotton, 37% Linen
Martindale 55.000
Lightfastness 4-5
Pilling 4-5



CH1249-062



CH1249-063



CH1249-064



CH1249-070



CH1249-071



CH1249-072



CH1249-073



CH1249-074



CH1249-075



CH1249-076



CH1249-077



CH1249-078



CH1249-079



CH1249-080



CH1249-081



CH1249-082



CH1249-083



CH1249-084



CH1249-085



CH1249-086

Hot Madison Reboot

Textile

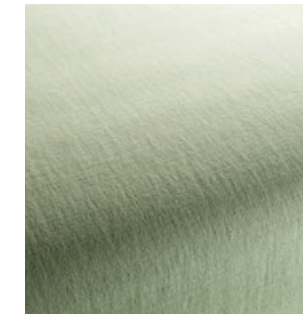
Price category 1
Manufacturer JAB
Materials 63% Cotton, 37% Linen
Martindale 55.000
Lightfastness 4-5
Pilling 4-5



CH1249-087



CH1249-088



CH1249-089



CH1249-091



CH1249-092



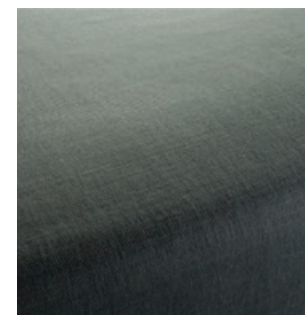
CH1249-093



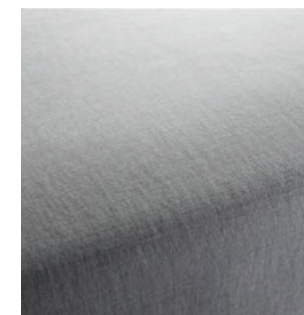
CH1249-094



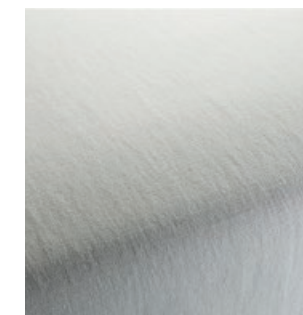
CH1249-095



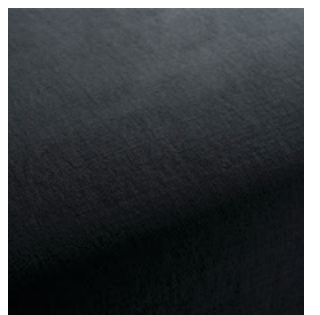
CH1249-096



CH1249-097



CH1249-098



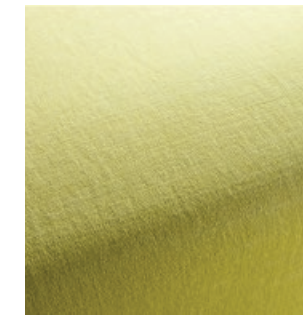
CH1249-099



CH1249-126



CH1249-127



CH1249-130



CH1249-131



CH1249-133



CH1249-134



CH1249-135



CH1249-139

Hot Madison Reboot

Textile

Price category 1
Manufacturer JAB
Materials 63% Cotton, 37% Linen
Martindale 55.000
Lightfastness 4-5
Pilling 4-5



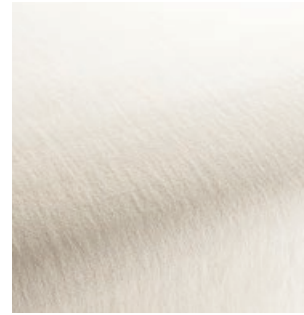
CH1249-155



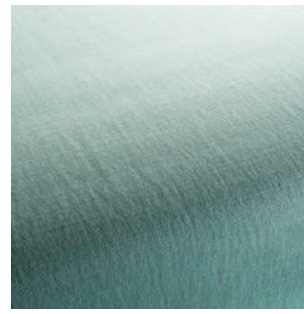
CH1249-170



CH1249-171



CH1249-172



CH1249-180



CH1249-181



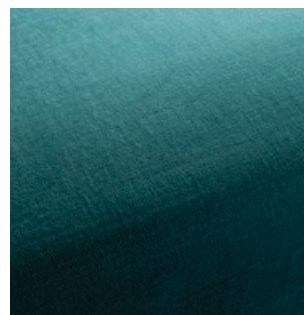
CH1249-182



CH1249-183



CH1249-184



CH1249-185



CH1249-186



CH1249-191



CH1249-192



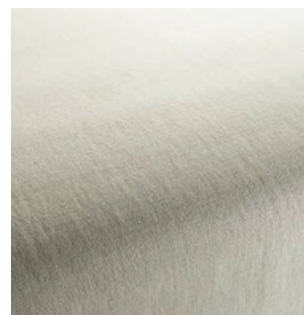
CH1249-193



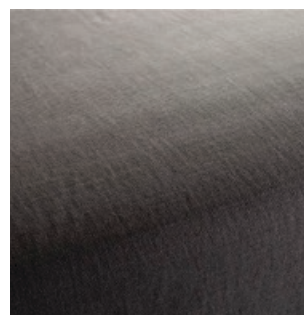
CH1249-194



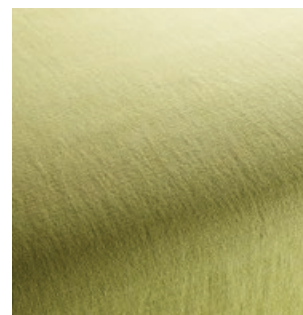
CH1249-195



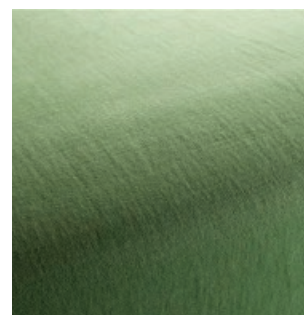
CH1249-196



CH1249-197



CH1249-230

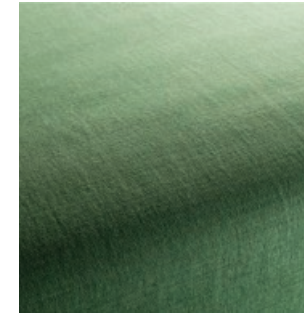


CH1249-231

Hot Madison Reboot

Textile

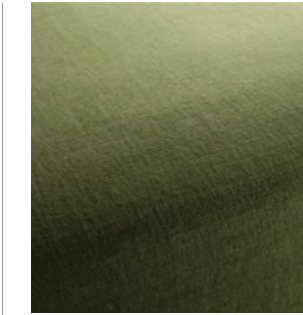
Price category 1
Manufacturer JAB
Materials 63% Cotton, 37% Linen
Martindale 55.000
Lightfastness 4-5
Pilling 4-5



CH1249-232



CH1249-233



CH1249-234



CH1249-245



CH1249-248



CH1249-404



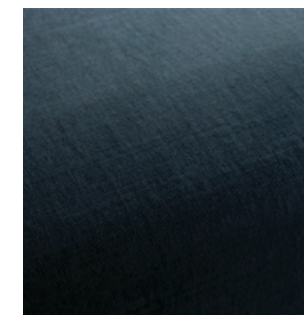
CH1249-410



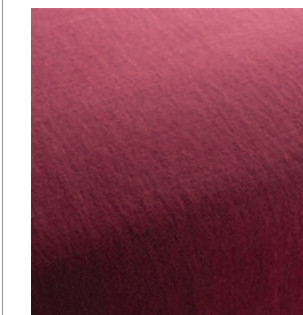
CH1249-419



CH1249-420



CH1249-424



CH1249-459



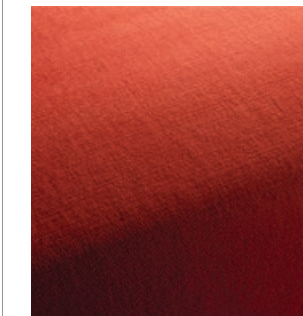
CH1249-469



CH1249-471



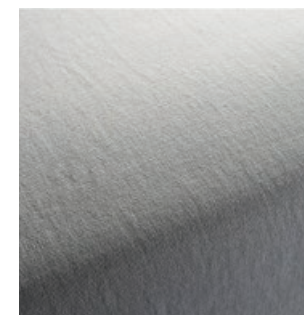
CH1249-476



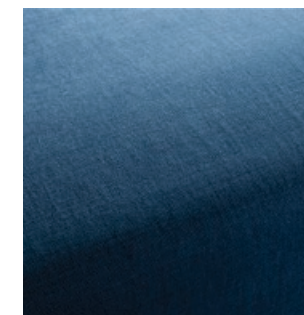
CH1249-490



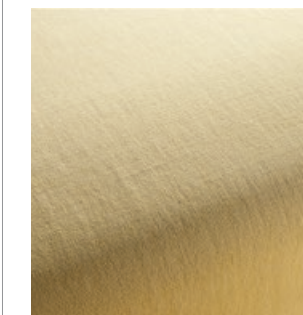
CH1249-495



CH1249-497



CH1249-499



CH1249-509



CH1249-517

Hot Madison Reboot

Textile

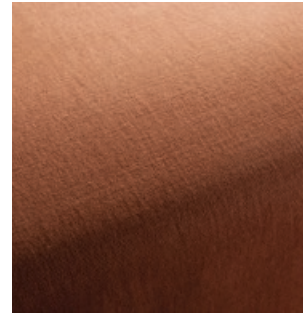
Price category 1
Manufacturer JAB
Materials 63% Cotton, 37% Linen
Martindale 55.000
Lightfastness 4-5
Pilling 4-5



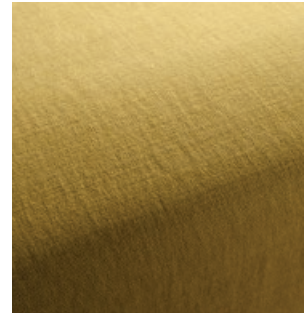
CH1249-521



CH1249-524



CH1249-525



CH1249-528



CH1249-694-



CH1249-695



CH1249-696



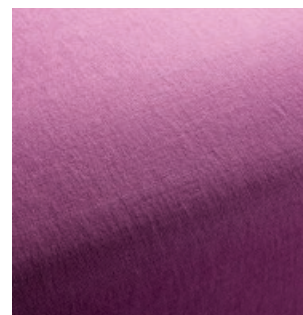
CH1249-697



CH1249-698



CH1249-699



CH1249-700



CH1249-701



CH1249-702



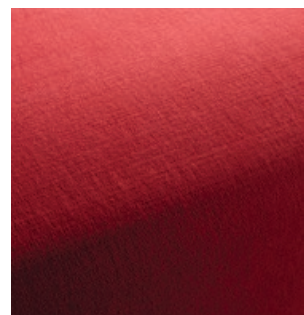
CH1249-703



CH1249-704



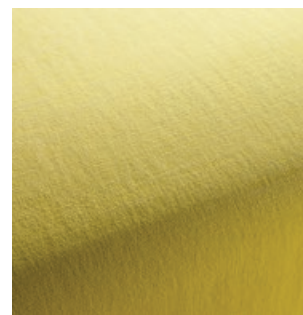
CH1249-705



CH1249-706



CH1249-707



CH1249-708

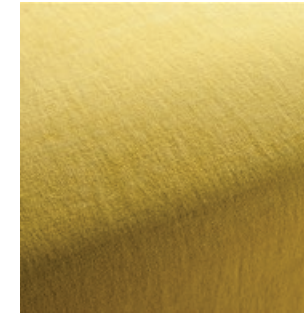


CH1249-709

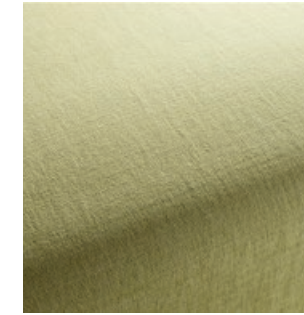
Hot Madison Reboot

Textile

Price category 1
Manufacturer JAB
Materials 63% Cotton, 37% Linen
Martindale 55.000
Lightfastness 4-5
Pilling 4-5



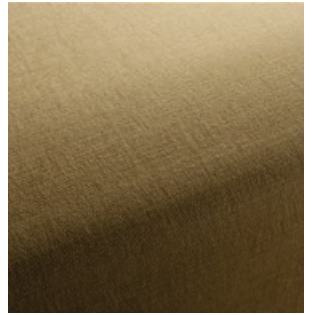
CH1249-710



CH1249-711



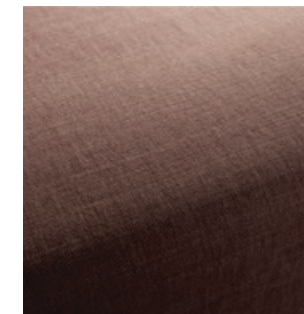
CH1249-712



CH1249-713



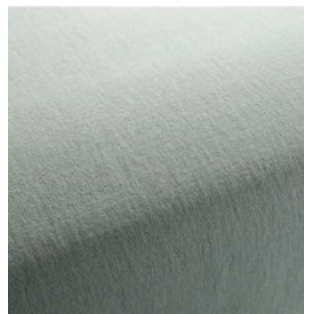
CH1249-714



CH1249-715



CH1249-716



CH1249-717



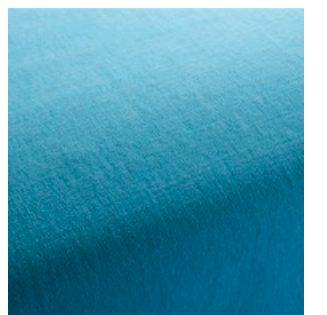
CH1249-718



CH1249-719



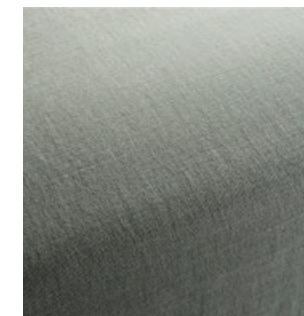
CH1249-720



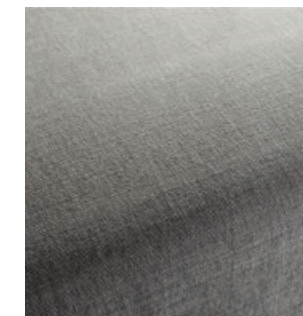
CH1249-721



CH1249-722



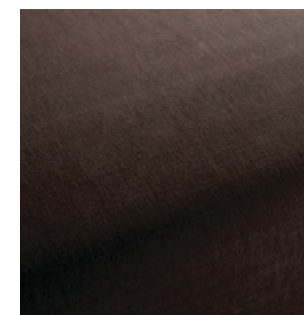
CH1249-723



CH1249-724



CH1249-725



CH1249-884



CH1249-893



CH1249-894

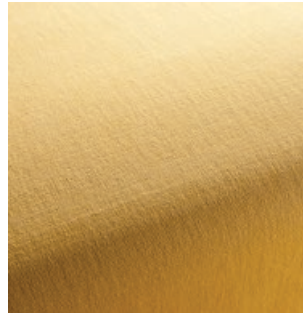


CH1249-896

Hot Madison Reboot

Textile

Price category 1
Manufacturer JAB
Materials 63% Cotton, 37% Linen
Martindale 55.000
Lightfastness 4-5
Pilling 4-5



CH1249-897



CH1249-898



CH1249-934



CH1249-987



CH1249-988



CH1249-989



CH1249-990



CH1249-991



CH1249-992



CH1249-993



CH1249-994

Maple

Textile

Price category 1
Manufacturer Kvadrat
Materials 81% Viscose, 15% Linen,
4% Non-woven Polyester backing
Martindale 30.000
Lightfastness 5-7
Pilling 5



Maple

Textile

Price category 1
Manufacturer Kvadrat
Materials 81% Viscose, 15% Linen,
4% Non-woven Polyester backing
Martindale 30.000
Lightfastness 5-7
Pilling 5



Maple

Textile

Price category 1
Manufacturer Kvadrat
Materials 81% Viscose, 15% Linen,
4% Non-woven Polyester backing
Martindale 30.000
Lightfastness 5-7
Pilling 5



0732



0742



0762



0792



0832



0862

Remix 3

Textile

Price category 1
Manufacturer Kvadrat
Materials 90% New wool, 10% Nylon
Martindale 100.000
Lightfastness 5-7
Pilling 4



Remix 3

Textile

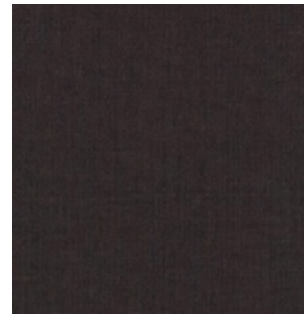
Price category 1
Manufacturer Kvadrat
Materials 90% New wool, 10% Nylon
Martindale 100.000
Lightfastness 5-7
Pilling 4



Remix 3

Textile

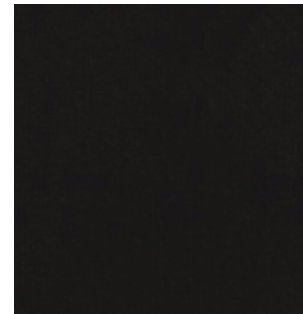
Price category 1
Manufacturer Kvadrat
Materials 90% New wool, 10% Nylon
Martindale 100.000
Lightfastness 5-7
Pilling 4



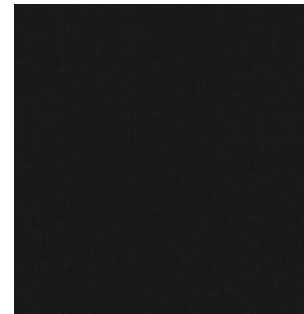
0356



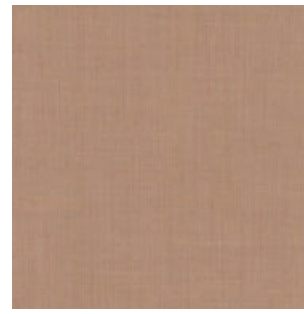
0362



0373



0383



0406



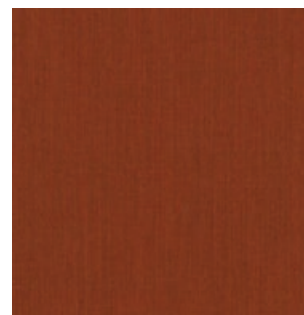
0412



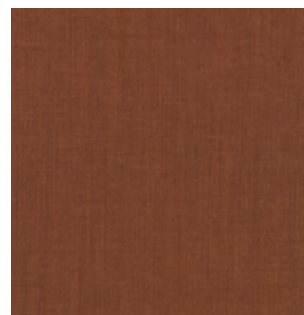
0422



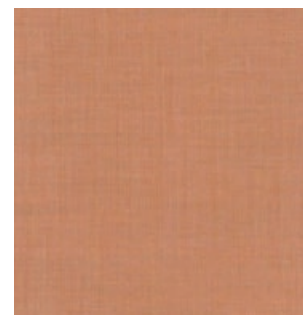
0433



0443



0452



0516



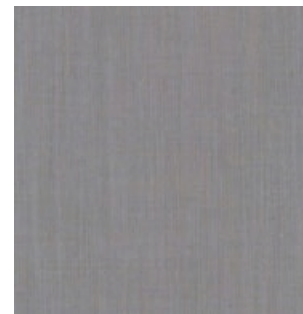
0536



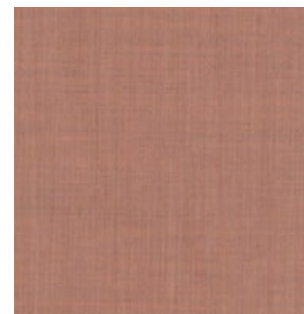
0543



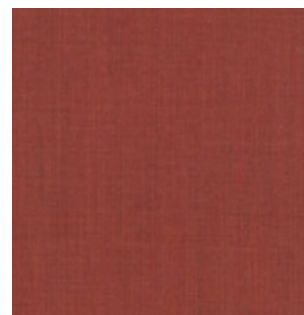
0566



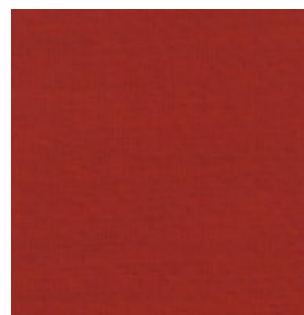
0606



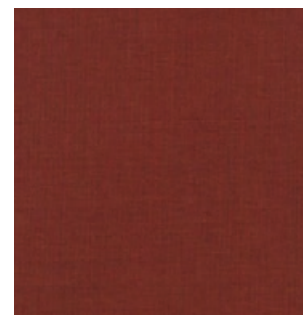
0612



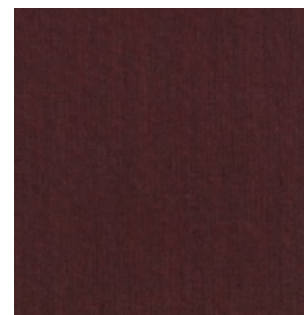
0632



0643



0653

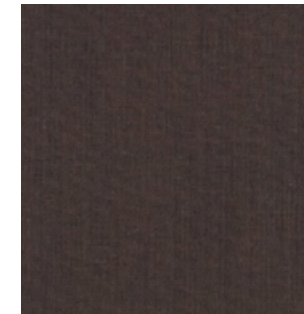


0662

Remix 3

Textile

Price category 1
Manufacturer Kvadrat
Materials 90% New wool, 10% Nylon
Martindale 100.000
Lightfastness 5-7
Pilling 4



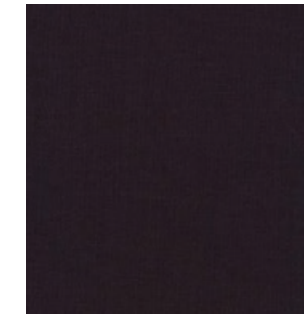
0672



0682



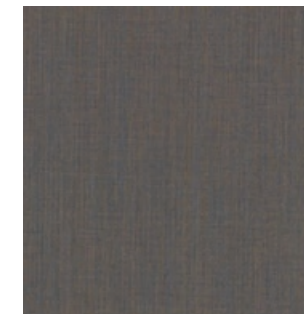
0686



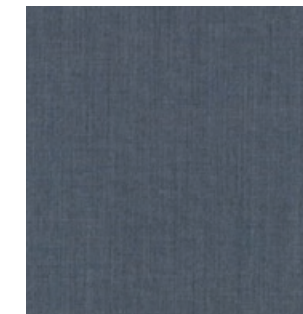
0692



0716



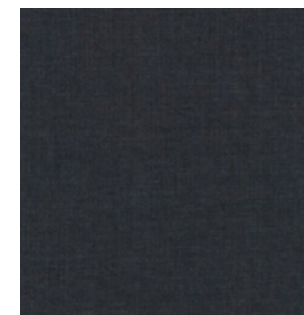
0722



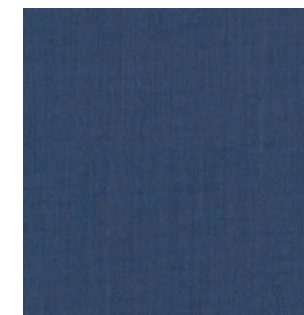
0733



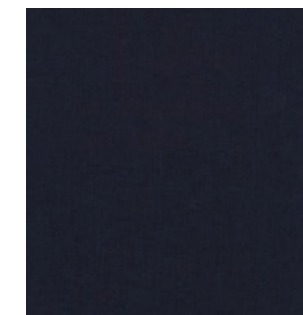
0743



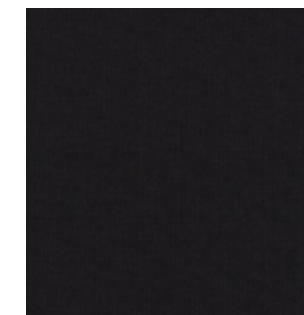
0753



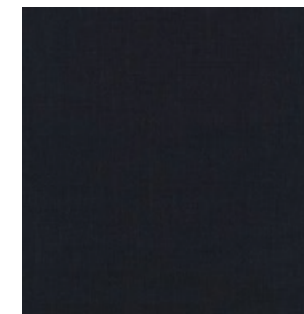
0762



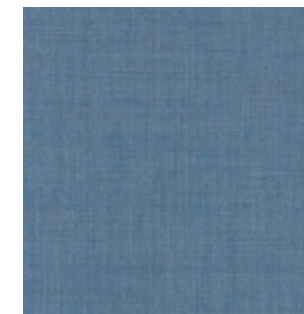
0773



0783



0796



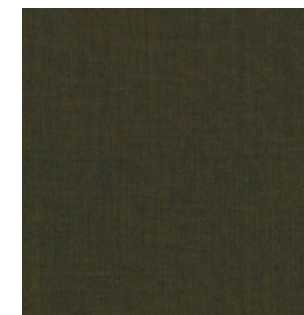
0816



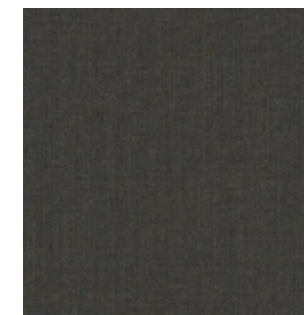
0823



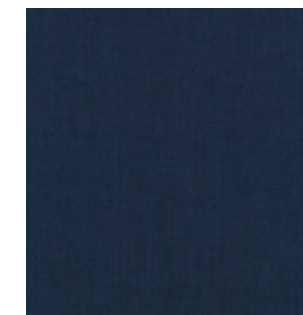
0836



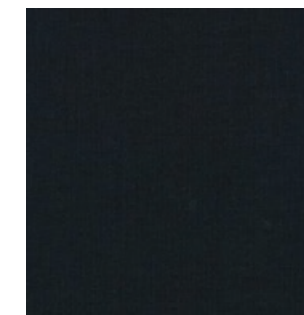
0842



0852



0866



0873

Remix 3

Textile

Price category 1
Manufacturer Kvadrat
Materials 90% New wool, 10% Nylon
Martindale 100.000
Lightfastness 5-7
Pilling 4



0906



0912



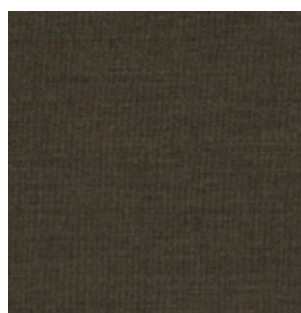
0923



0933



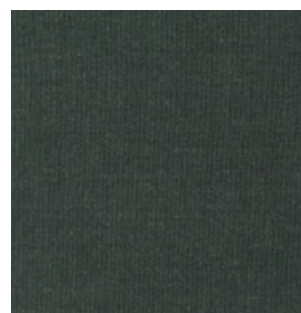
0942



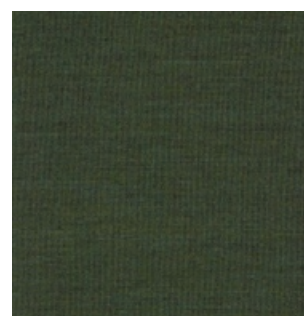
0954



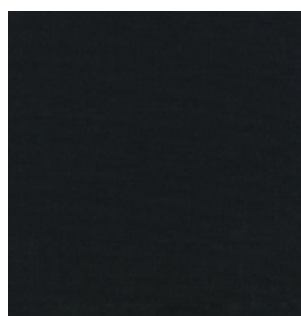
0962



0973



0982



0996

Illusion

Artificial leather

Price category 1
Manufacturer Nevotex
Materials Artificial leather
Thickness 1 mm

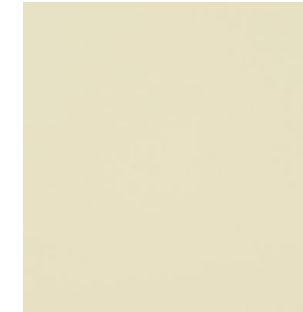


*Please note Instill is an artificial leather

Illusion

Artificial leather

Price category 1
Manufacturer Kvadrat
Materials Artificial leather
Thickness 1 mm



82417



93086



53593



22427



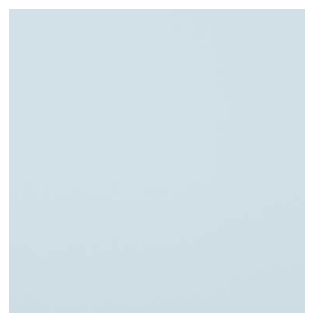
65072



72133



63174



61602



65307



74007



76236



00800



84176



85352



87241



36519



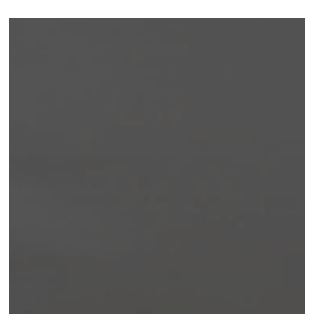
44184



24784



45633

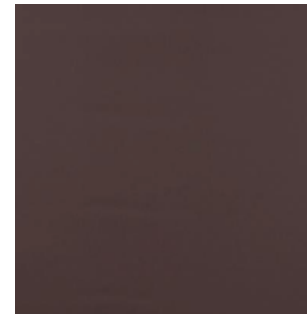


57841

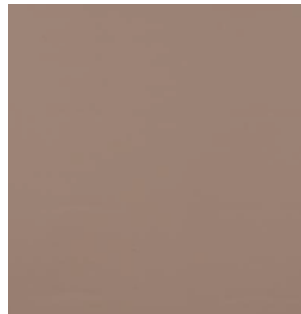
Illusion

Artificial leather

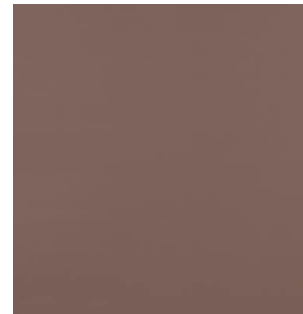
Price category 1
Manufacturer Kvadrat
Materials Artificial leather
Thickness 1 mm



48013



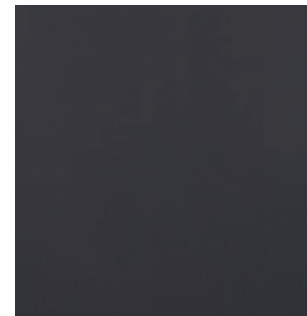
46508



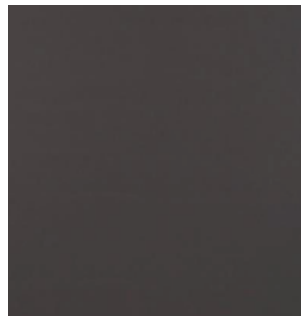
47124



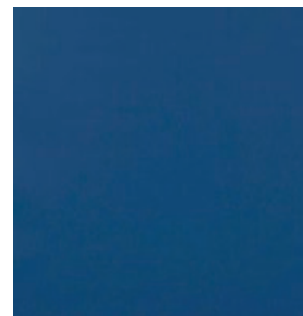
67403



68523



58290



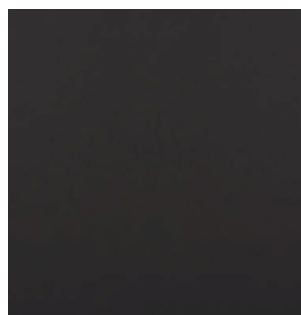
68746



65066



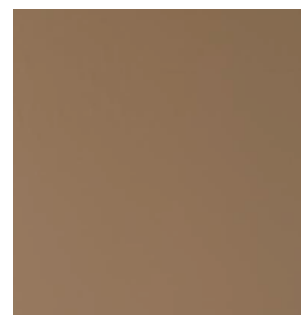
67382



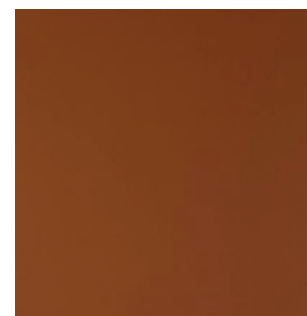
00110



83430



85020



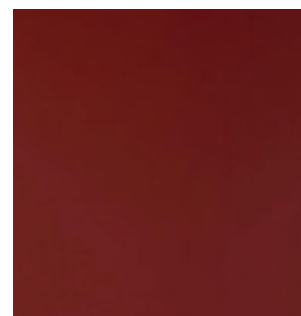
44388



36850



23660



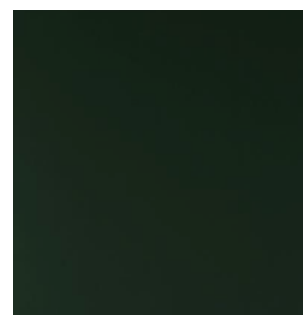
28040



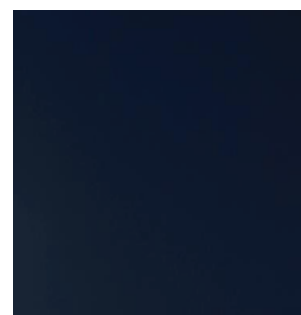
75566



76725



77773

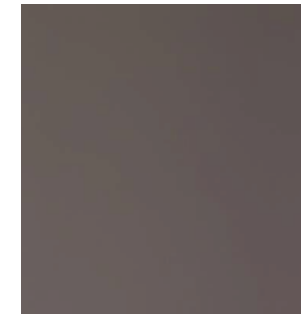


66745

Illusion

Artificial leather

Price category 1
Manufacturer Kvadrat
Materials Artificial leather
Thickness 1 mm



47069

2

Textile Category 2

Canvas 2

Textile

Price category 2
Manufacturer Kvadrat
Materials 90% New wool, 10% Nylon
Martindale 100.000
Lightfastness 5-7
Pilling 4-5



Canvas 2

Textile

Price category 2
Manufacturer Kvadrat
Materials 90% New wool, 10% Nylon
Martindale 100.000
Lightfastness 5-7
Pilling 4-5



Canvas 2

Textile

Price category 2
Manufacturer Kvadrat
Materials 90% New wool, 10% Nylon
Martindale 100.000
Lightfastness 5-7
Pilling 4-5



576



614



644



654



666



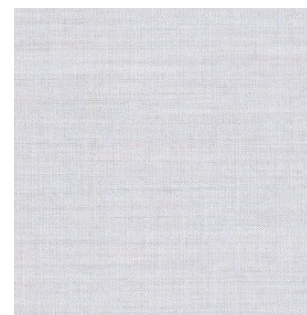
674



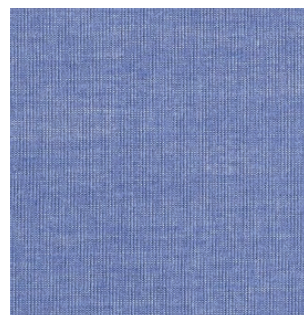
684



694



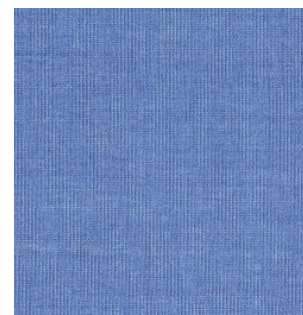
716



726



734



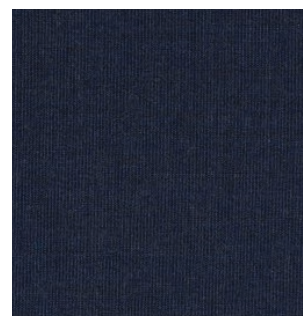
746



764



786



794



836



854



926



936



946

Canvas 2

Textile

Price category 2
Manufacturer Kvadrat
Materials 90% New wool, 10% Nylon
Martindale 100.000
Lightfastness 5-7
Pilling 4-5



954



964



974



984



996

Clay

Textile

Price category 2
Manufacturer Sahco
Materials 76% Linen, 21% Cotton,
3% Polyester
Martindale 45.000
Lightfastness 4-6
Pilling 4



Clay

Textile

Price category 2
Manufacturer Sahco
Materials 76% Linen, 21% Cotton,
3% Polyester
Martindale 45.000
Lightfastness 4-6
Pilling 4



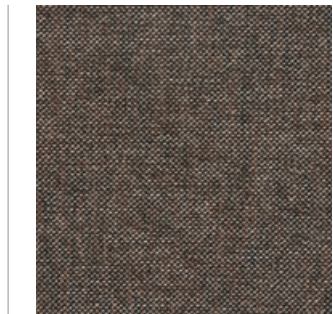
110



120



135



140



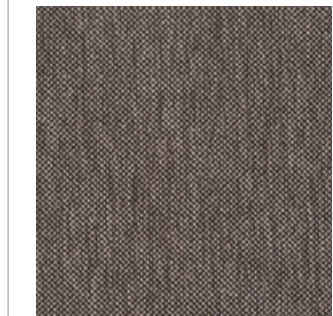
155



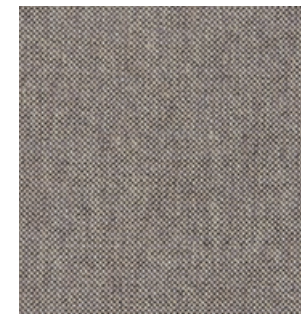
160



180



190



220



240



255



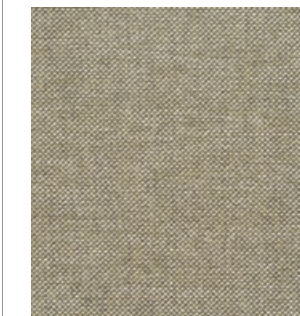
265



365



370



380



435



445

Colline 2

Textile

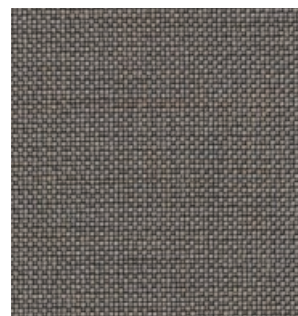
Price category 2
Manufacturer Kvadrat
Materials 75% wool, 17% Acrylic,
8% Nylon
Martindale 100.000
Lightfastness 6
Pilling 4-5



Colline 2

Textile

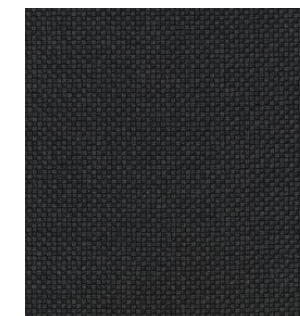
Price category 2
Manufacturer Kvadrat
Materials 75% wool, 17% Acrylic,
8% Nylon
Martindale 100.000
Lightfastness 6
Pilling 4-5



0127



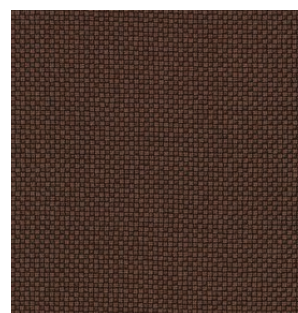
0147



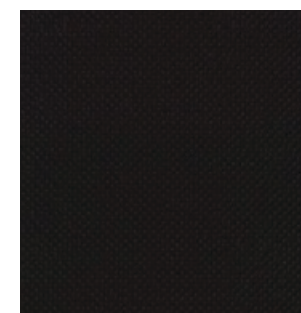
0177



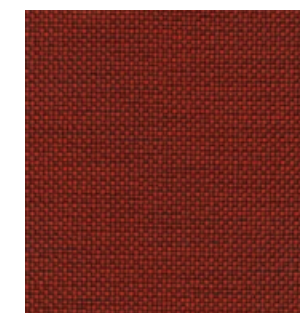
0227



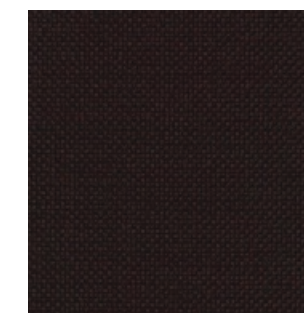
0347



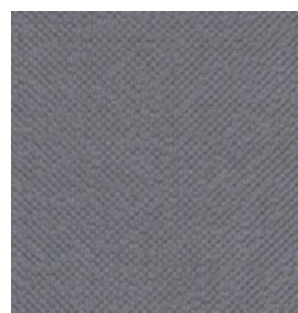
0397



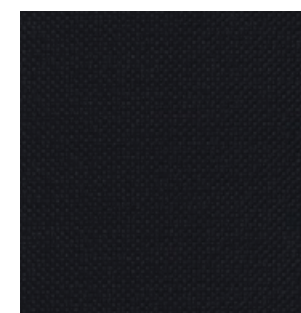
0657



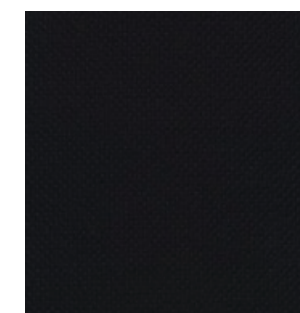
0677



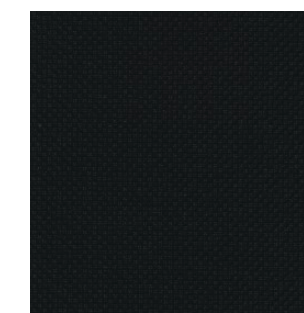
0737



0787



0797

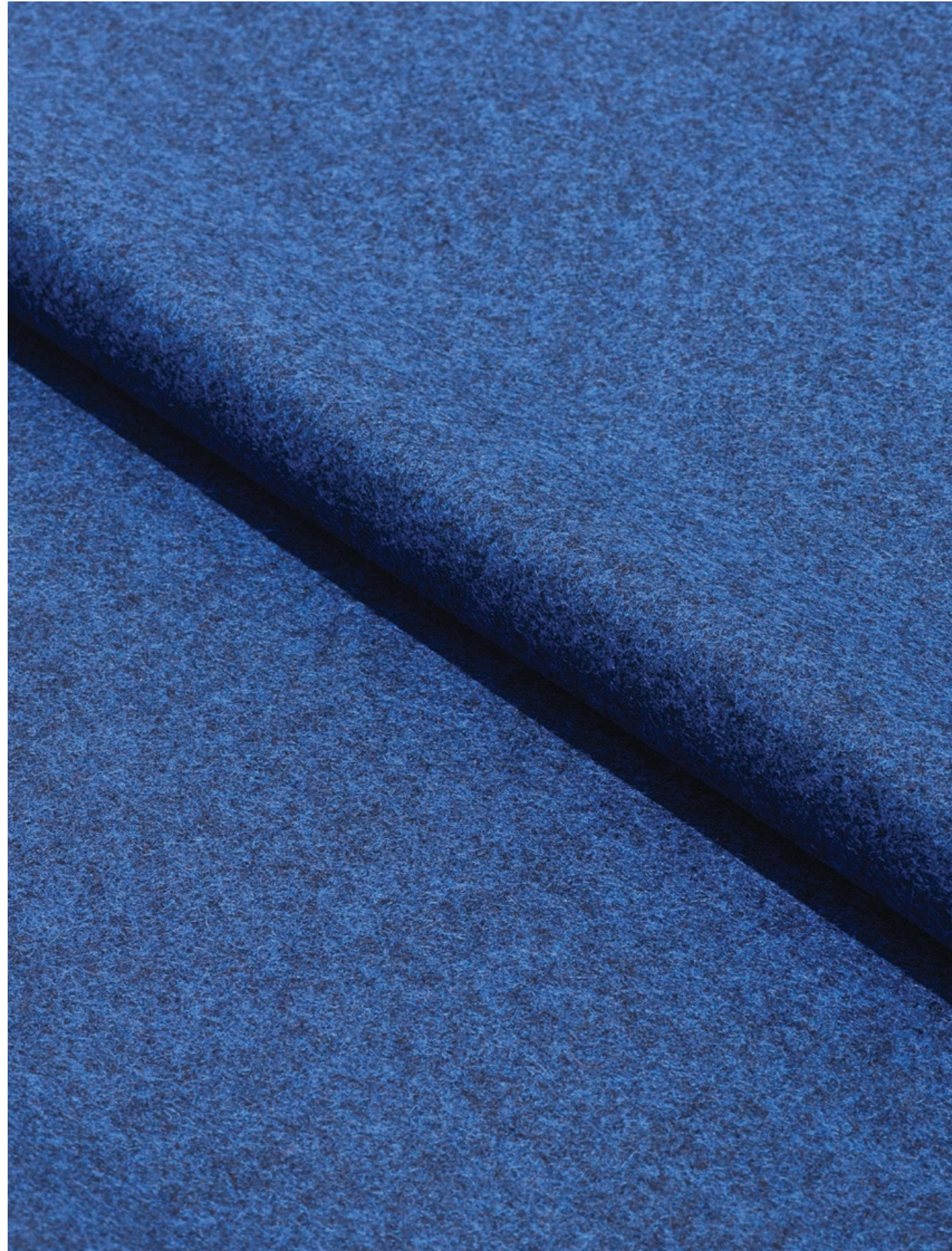


0987

Divina Melange 3

Textile

Price category 2
Manufacturer Kvadrat
Materials 100% new wool
Martindale 45.000
Lightfastness 6-7
Pilling 3



Divina Melange 3

Textile

Price category 2
Manufacturer Kvadrat
Materials 100% new wool
Martindale 45.000
Lightfastness 6-7
Pilling 3



Divina Melange 3

Textile

Price category 2
Manufacturer Kvadrat
Materials 100% new wool
Martindale 45.000
Lightfastness 6-7
Pilling 3



0581



0597



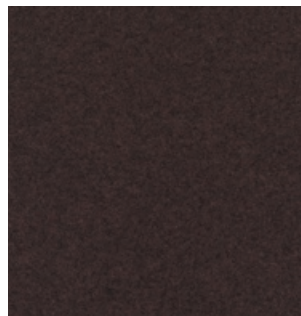
0617



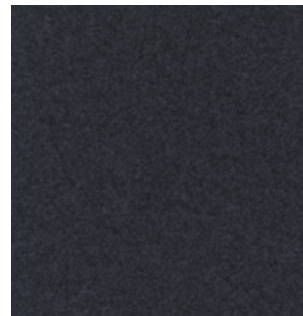
0620



0647



0677



0687



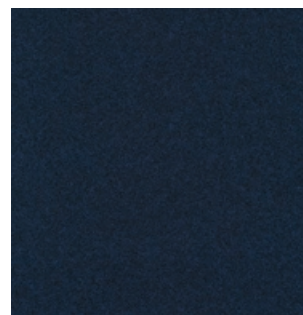
0731



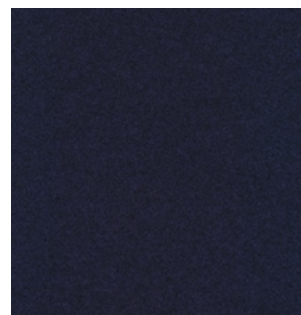
0747



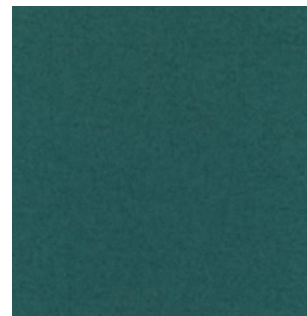
0757



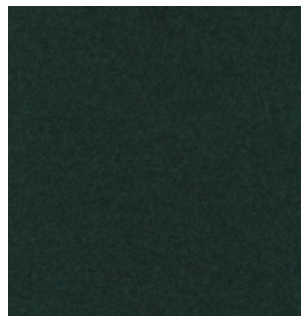
0777



0787



0821



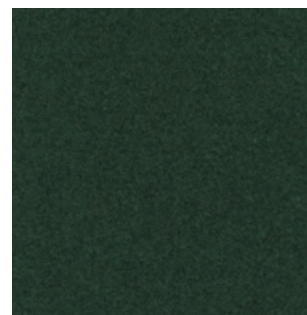
0871



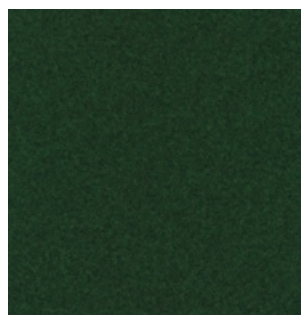
0917



0937



0967

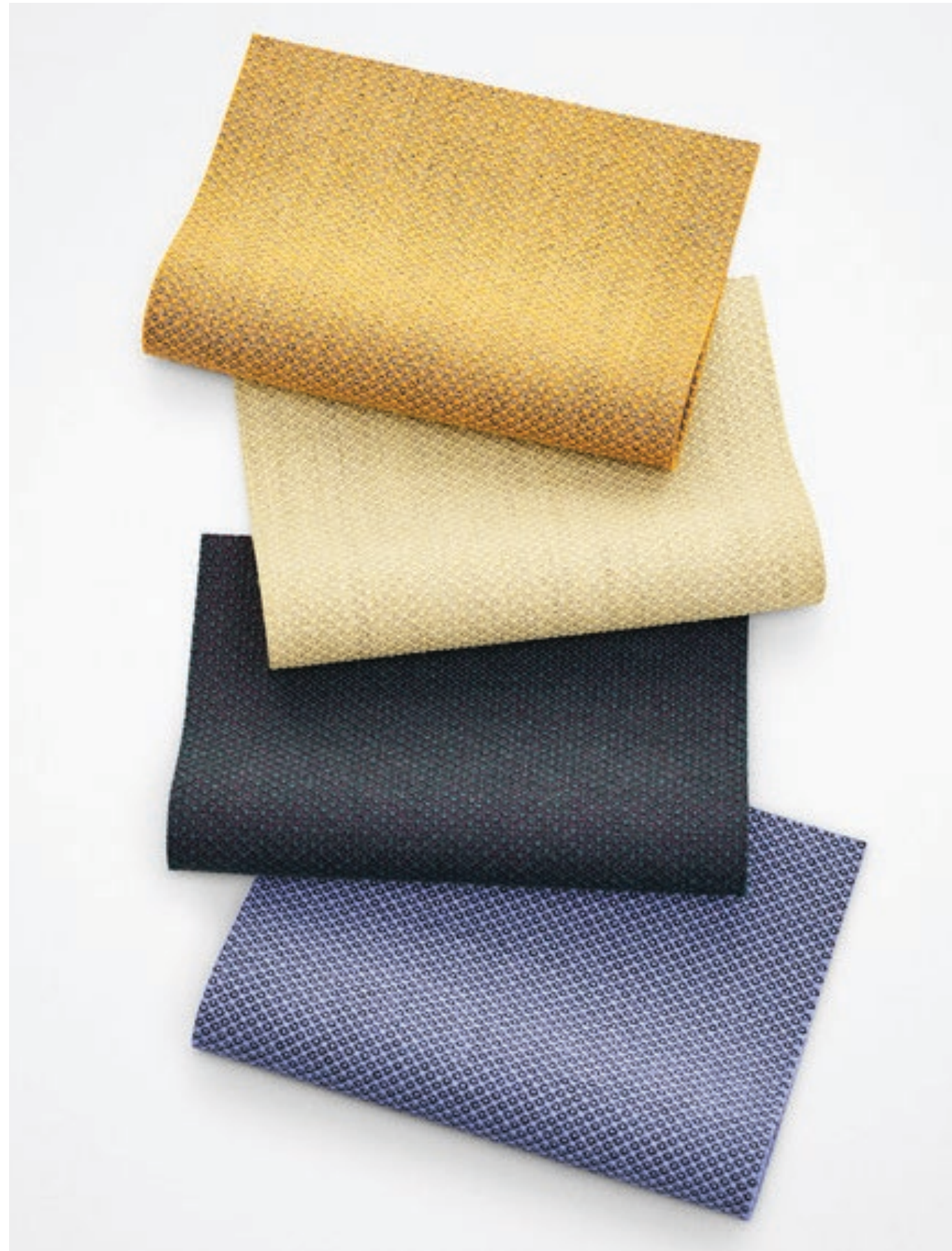


0977

Fiord 2

Textile

Price category 2
Manufacturer Kvadrat
Materials 92% New wool, 8% Nylon
Martindale 60.000
Lightfastness 6
Pilling 4-5



Fiord 2

Textile

Price category 2
Manufacturer Kvadrat
Materials 92% New wool, 8% Nylon
Martindale 60.000
Lightfastness 6
Pilling 4-5



Fiord 2

Textile

Price category 2
Manufacturer Kvadrat
Materials 92% New wool, 8% Nylon
Martindale 60.000
Lightfastness 6
Pilling 4-5



672



721



751



762



771



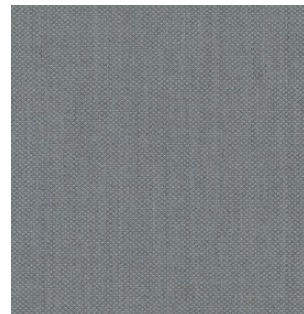
782



791



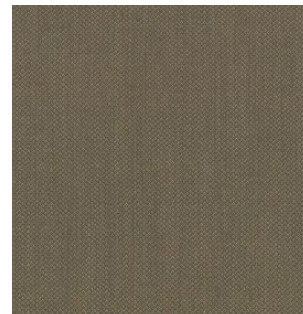
821



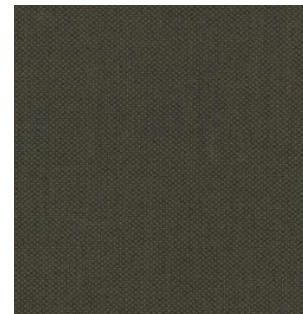
862



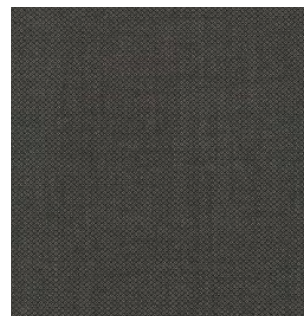
862



951



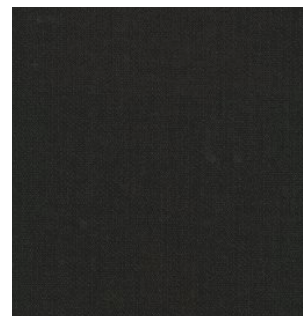
961



971



981



991

Hallingdal 65

Textile

Price category 2
Manufacturer Kvadrat
Materials 70% New wool, 30% Viscose
Martindale 100.000
Lightfastness 5-7
Pilling 3-4



Hallingdal 65

Textile

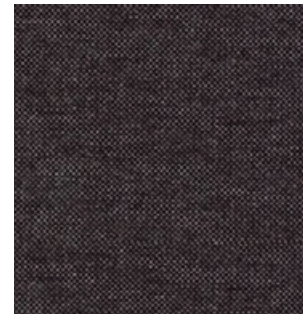
Price category 2
Manufacturer Kvadrat
Materials 70% New wool, 30% Viscose
Martindale 100.000
Lightfastness 5-7
Pilling 3-4



Hallingdal 65

Textile

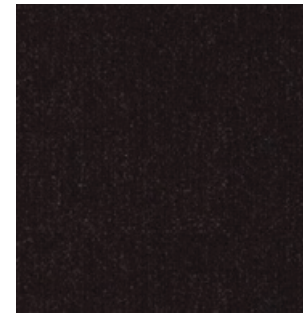
Price category 2
Manufacturer Kvadrat
Materials 70% New wool, 30% Viscose
Martindale 100.000
Lightfastness 5- 7
Pilling 3-4



0368



0370



0376



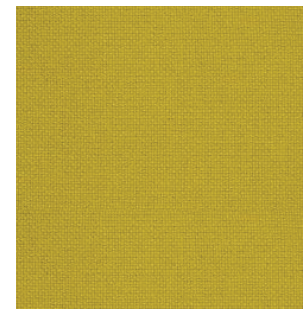
0390



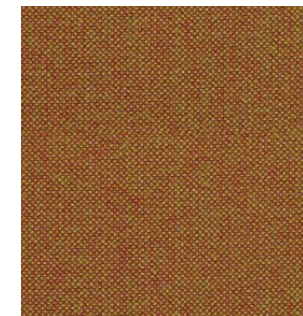
0407



0420



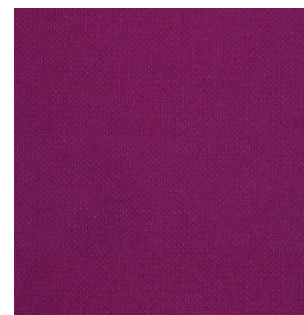
0457



0526



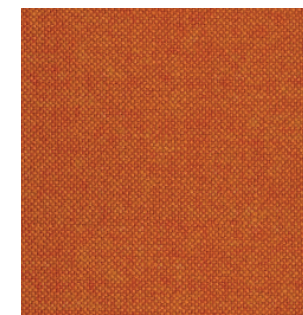
0547



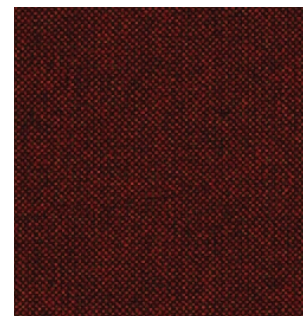
0563



0573



0590



0596



0600



0657



0660



0674



0680



0687



0694

Hallingdal 65

Textile

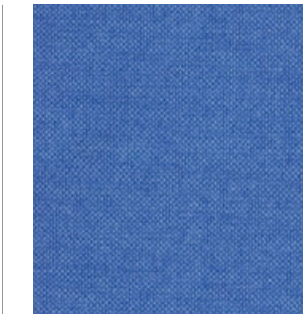
Price category 2
Manufacturer Kvadrat
Materials 70% New wool, 30% Viscose
Martindale 100.000
Lightfastness 5- 7
Pilling 3-4



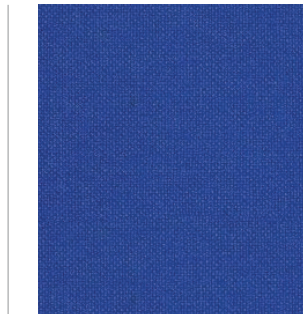
0702



0723



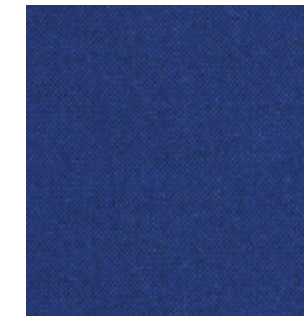
0733



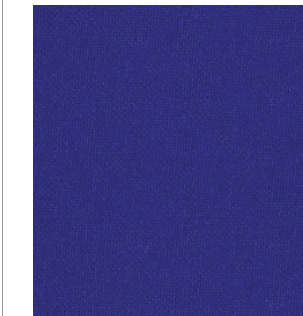
0750



0753



0754



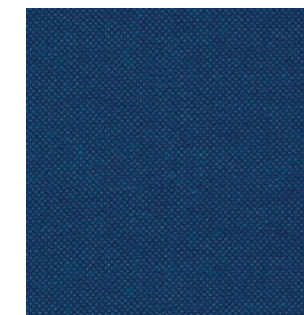
0763



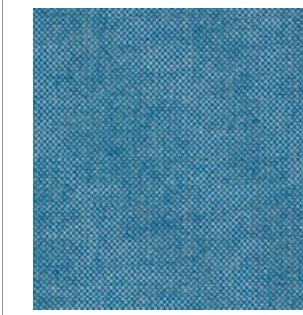
0764



0773



0810



0840



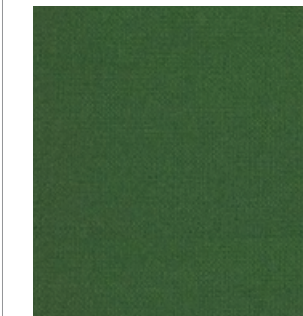
0850



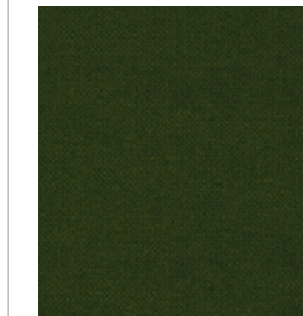
0890



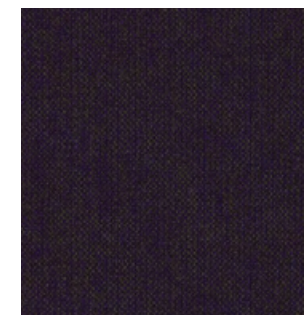
0907



0944



0960



0968



0980

Moss

Textile

Price category 2
Manufacturer Sahco
Materials 52% Cotton, 22% Viscose,
14% Acrylic, 6% Linen, 3% Polyester,
3% Nylon
Martindale 50,000
Lightfastness 7
Pilling 4-5



Moss

Textile

Price category 2
Manufacturer Sahco
Materials 52% Cotton, 22% Viscose,
14% Acrylic, 6% Linen, 3% Polyester,
3% Nylon
Martindale 50,000
Lightfastness 7
Pilling 4-5



Moss

Textile



0021



0022

Price category 2
Manufacturer Sahco
Materials 52% Cotton, 22% Viscose,
14% Acrylic, 6% Linen, 3% Polyester,
3% Nylon
Martindale 50,000
Lightfastness 7
Pilling 4-5

Savanna

Textile

Price category 2
Manufacturer Kvadrat
Materials 34% Polyester, 31% wool,
26% Acrylic, 4% Cotton, 3% Nylon,
2% Linen
Martindale 45.000
Lightfastness 6-7
Pilling 3



Savanna

Textile

Price category 2
Manufacturer Kvadrat
Materials 34% Polyester, 31% wool,
26% Acrylic, 4% Cotton, 3% Nylon,
2% Linen
Martindale 45.000
Lightfastness 6-7
Pilling 3



242



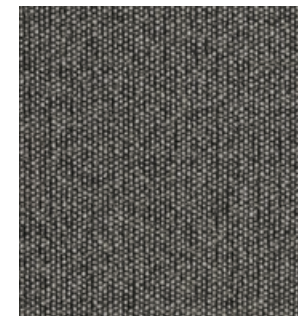
262



622



122



152



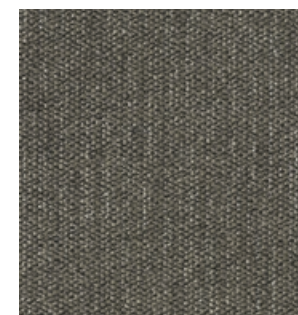
222



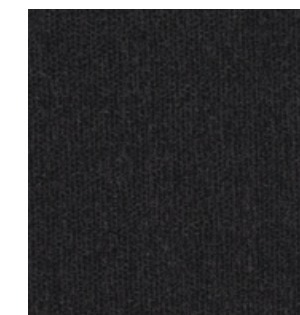
292



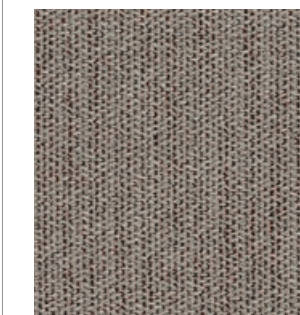
202



952



192



622

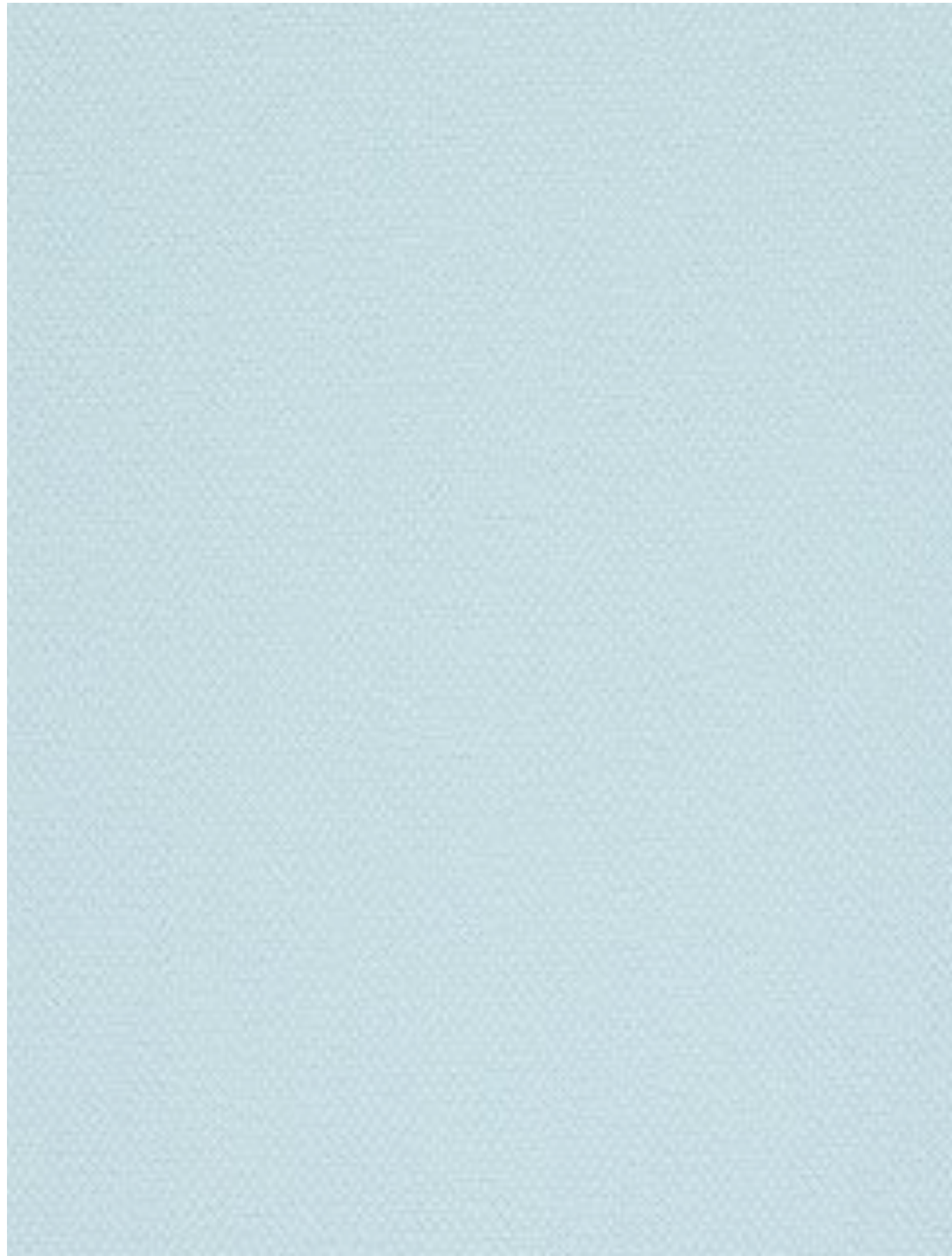


442

Steelcut 2

Textile

Price category 2
Manufacturer Kvadrat
Materials 90% New wool, 10% Nylon
Martindale 100.000
Lightfastness 5-7
Pilling 3-4



Steelcut 2

Textile

Price category 2
Manufacturer Kvadrat
Materials 90% New wool, 10% Nylon
Martindale 100.000
Lightfastness 5-7
Pilling 3-4



Steelcut 2

Textile

Price category 2
Manufacturer Kvadrat
Materials 90% New wool, 10% Nylon
Martindale 100.000
Lightfastness 5-7
Pilling 3-4



605



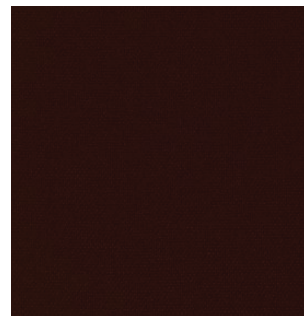
615



625



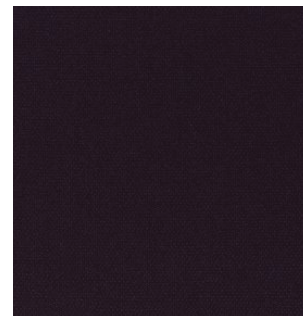
635



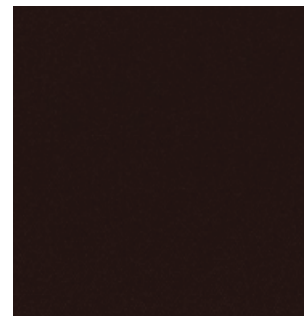
655



660



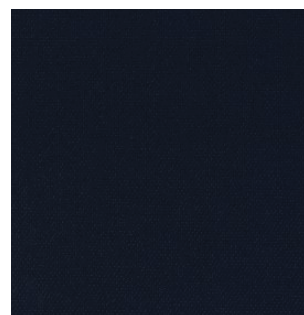
685



695



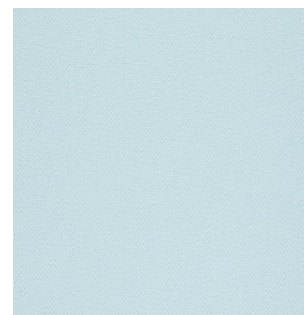
760



775



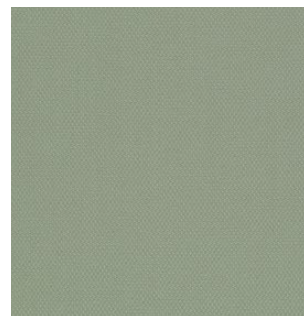
780



820



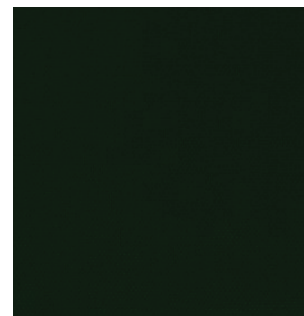
835



935



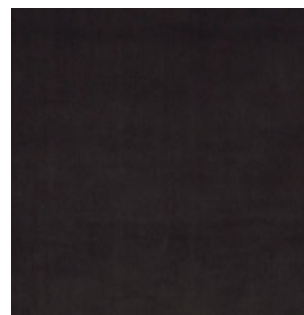
950



975



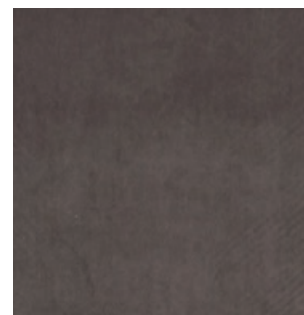
985



1122



0917

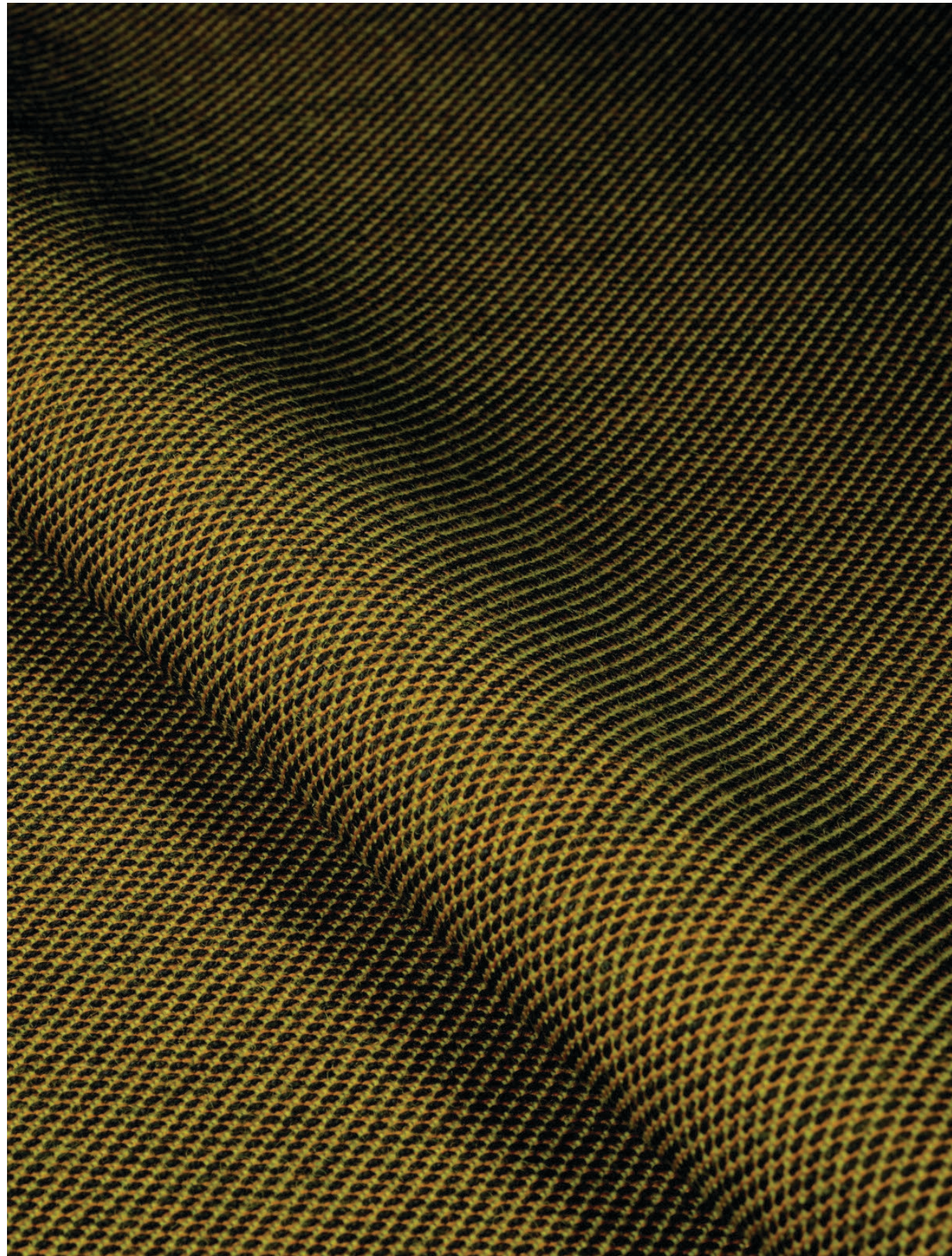


1362

Steelcut Trio 3

Textile

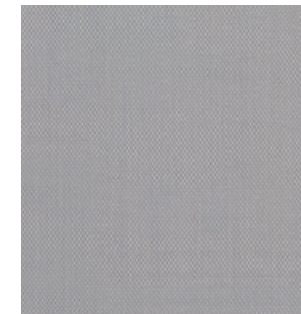
Price category 2
Manufacturer Kvadrat
Materials 90% New wool, 10% Nylon
Martindale 100.000
Lightfastness 5-7
Pilling 4



Steelcut Trio 3

Textile

Price category 2
Manufacturer Kvadrat
Materials 90% New wool, 10% Nylon
Martindale 100.000
Lightfastness 5-7
Pilling 4



105



113



124



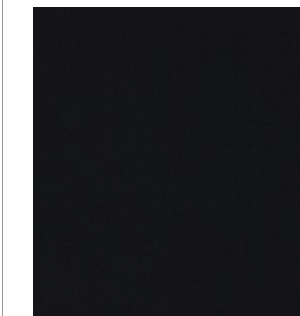
133



153



176



195



205



213



226



236



246



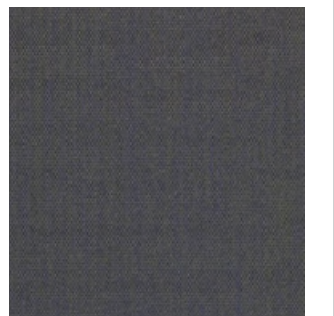
253



266



276



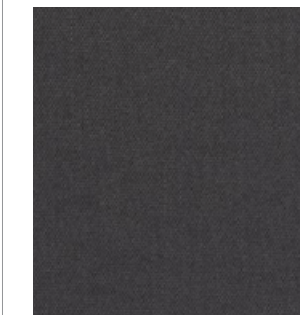
283



336



376



383



416

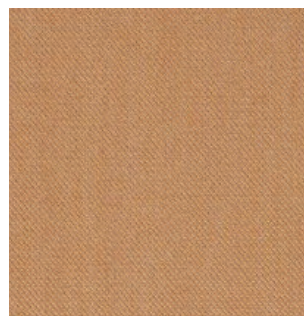
Steelcut Trio 3

Textile

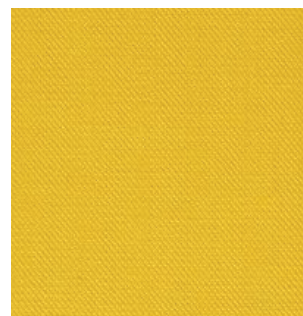
Price category 2
Manufacturer Kvadrat
Materials 90% New wool, 10% Nylon
Martindale 100.000
Lightfastness 5-7
Pilling 4



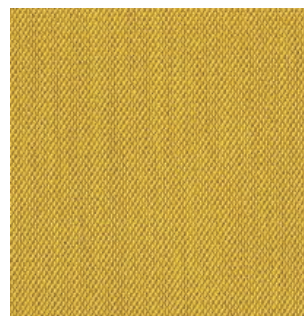
426



436



446



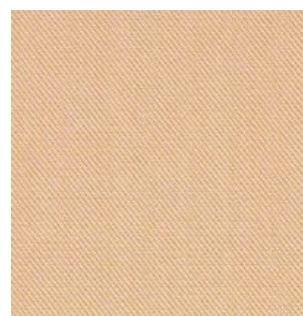
453



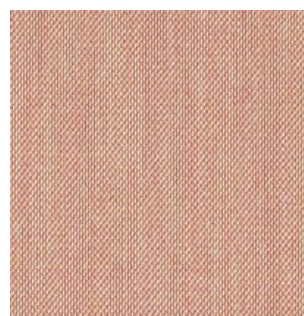
466



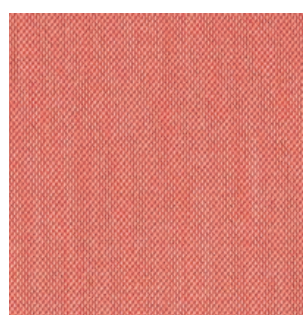
476



506



515



526



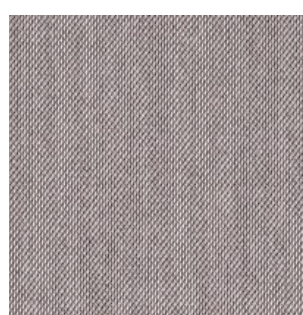
533



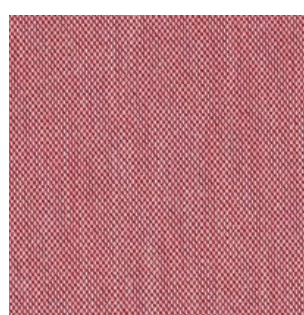
553



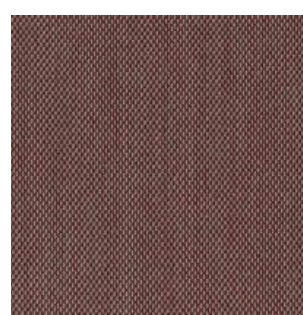
576



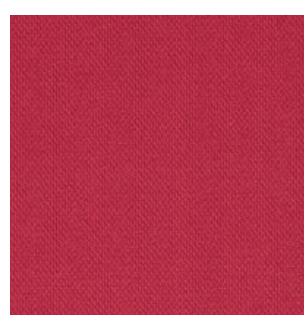
616



636



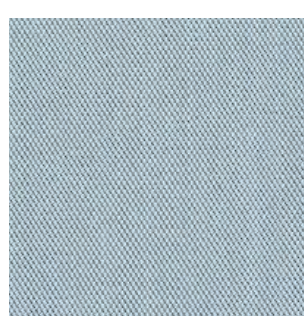
645



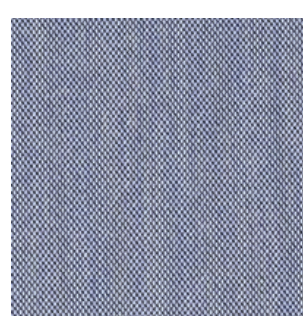
666



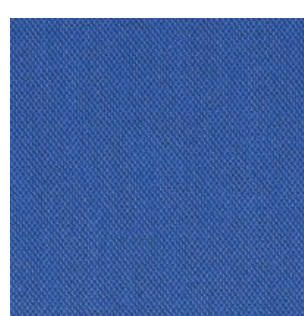
686



713



716

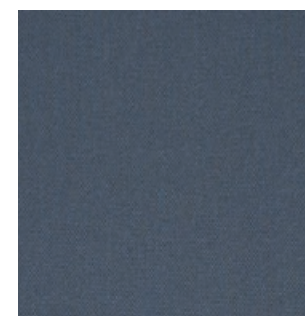


746

Steelcut Trio 3

Textile

Price category 2
Manufacturer Kvadrat
Materials 90% New wool, 10% Nylon
Martindale 100.000
Lightfastness 5-7
Pilling 4



756



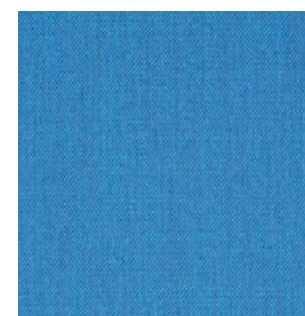
776



796



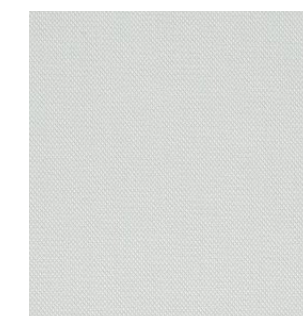
806



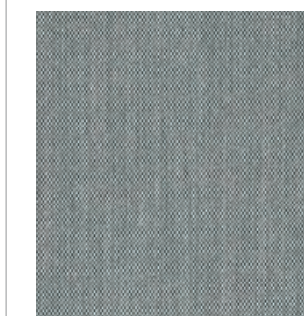
865



883



906



916



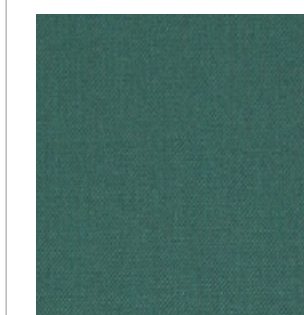
946



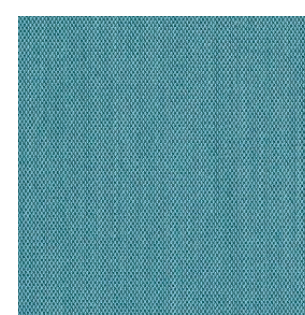
953



966



976



983



996

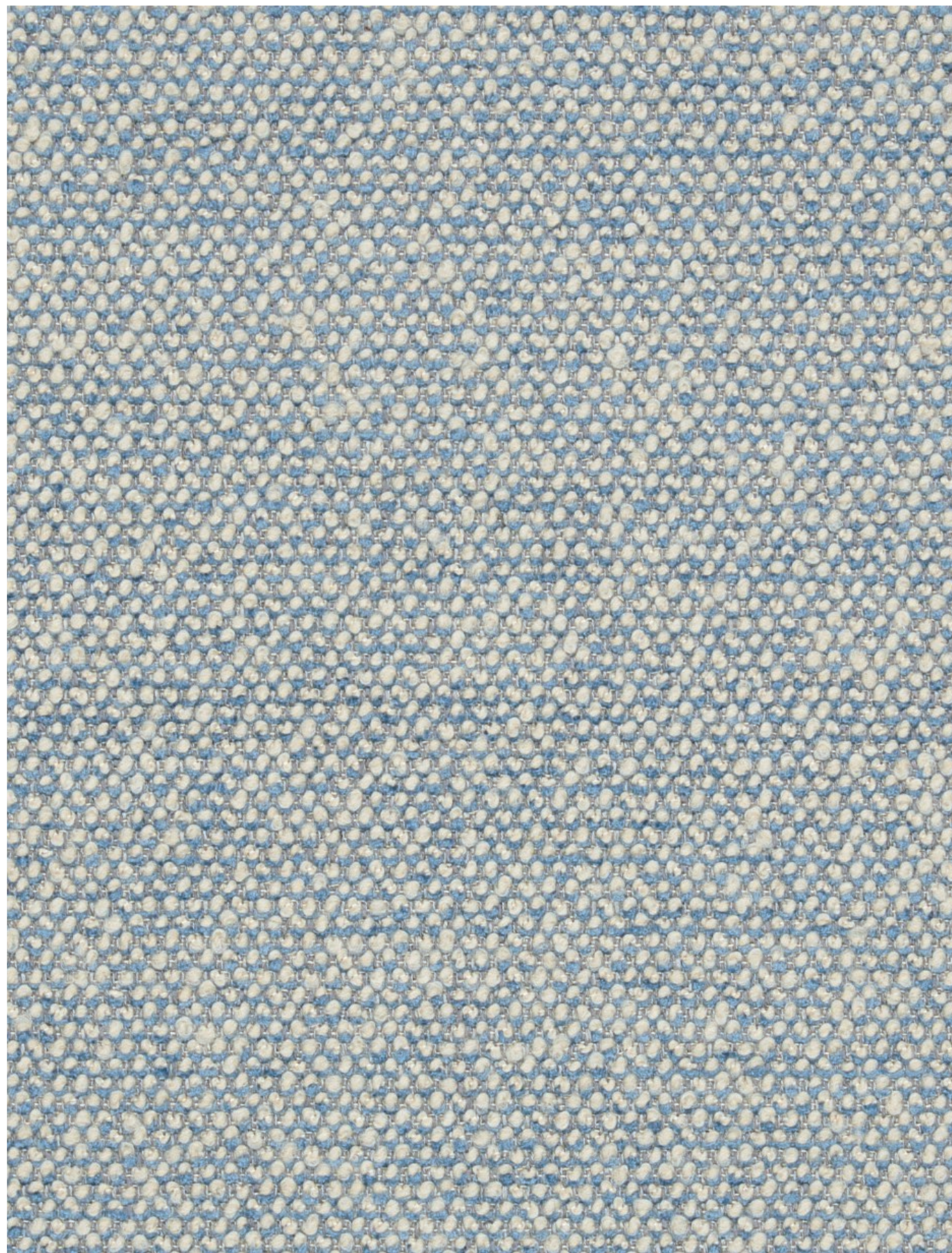
3

Textile Category 3

Safire

Textile

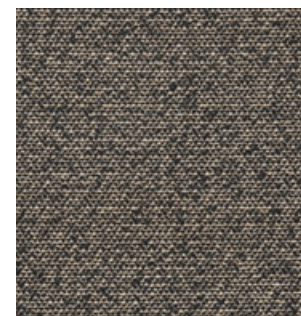
Price category 3
Manufacturer Sahco
Materials 43% Viscose, 17% Polyacrylic,
15% New wool, 9% Cotton, 8% Linen,
8% Polyester
Martindale 40.000
Lightfastness 6
Pilling 3



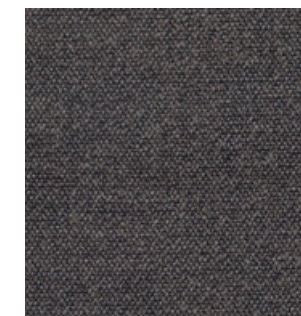
Safire

Textile

Price category 3
Manufacturer Sahco
Materials 43% Viscose, 17% Polyacrylic,
15% New wool, 9% Cotton, 8% Linen, 8%
Polyester
Martindale 40.000
Lightfastness 6
Pilling 3



001



002



003



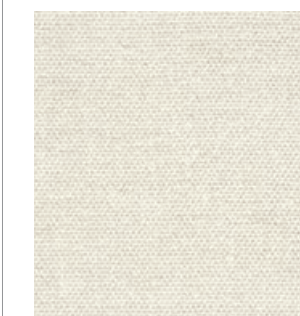
004



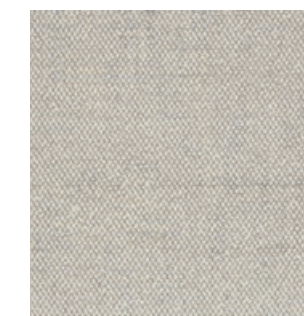
005



006



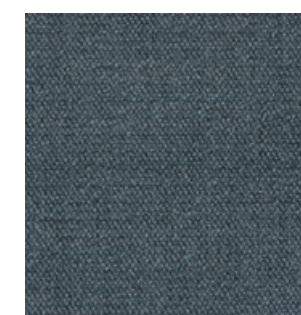
007



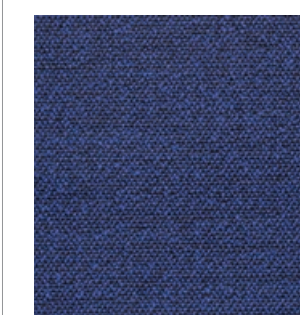
008



009



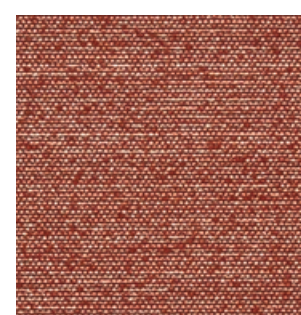
010



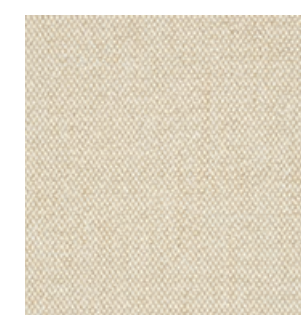
011



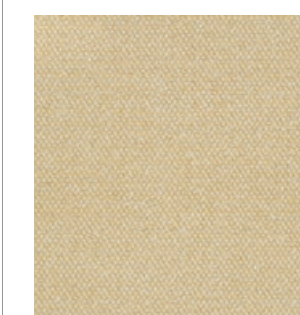
012



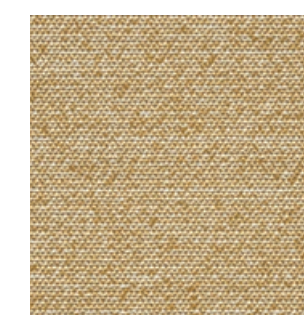
013



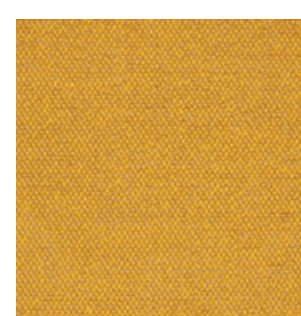
014



015



016



017

4

Textile Category 4

Atlas

Textile

Price category 4
Manufacturer Dedar
Materials 90% new wool worsted,
10% nylon
Martindale 35.000



Atlas

Textile

Price category 4
Manufacturer Dedar
Materials 90% new wool worsted,
10% nylon
Martindale 35.000



Atlas

Textile

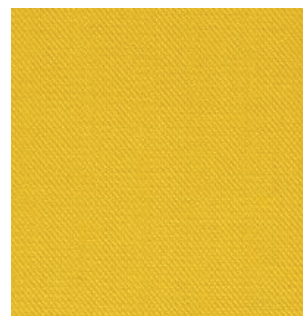
Price category 4
Manufacturer Dedar
Materials 90% new wool worsted,
10% nylon
Martindale 35.000



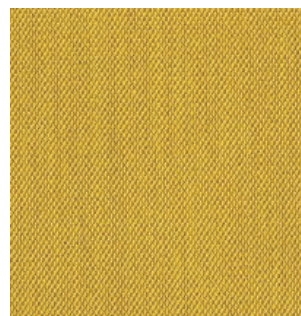
0651



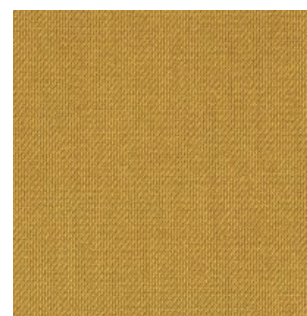
0661



0671



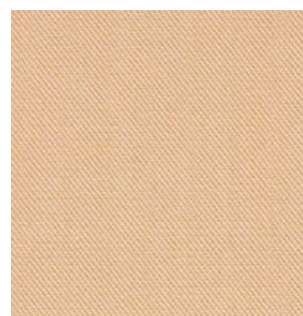
0681



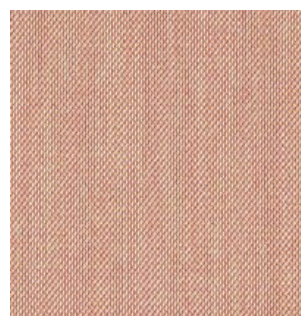
0711



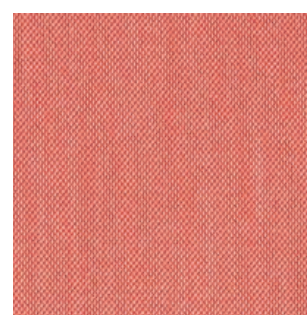
0731



0771



0781



0861



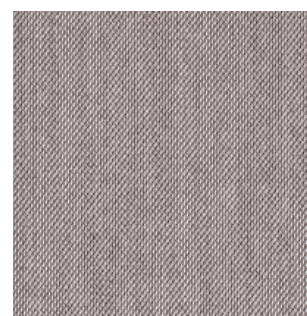
0871



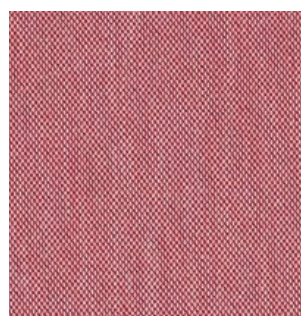
0881



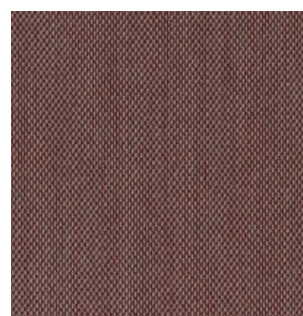
0911



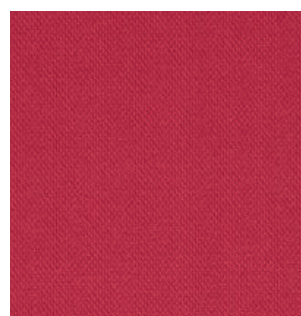
0931



0951



0961



0971

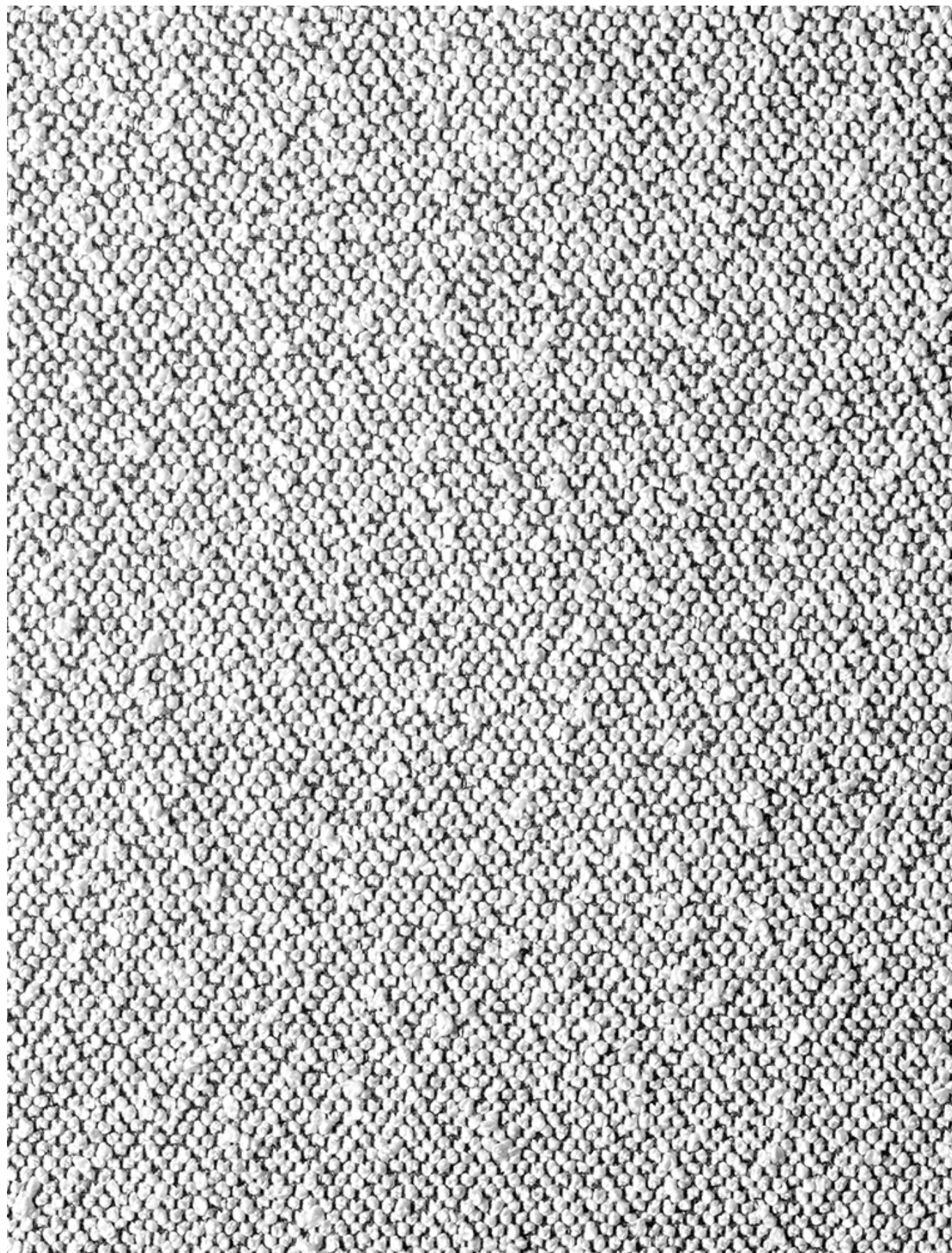


0981

Lupo

Textile

Price category 4
Manufacturer Dedar
Materials 72% Wool, 27% Cotton
1% Polyamide
Martindale 40.000



Lupo

Textile

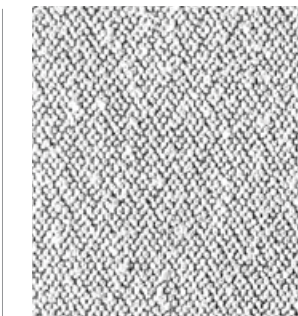
Price category 4
Manufacturer Dedar
Materials 72% Wool, 27% Cotton
1% Polyamide
Martindale 40.000



T19028_001



T19028_002



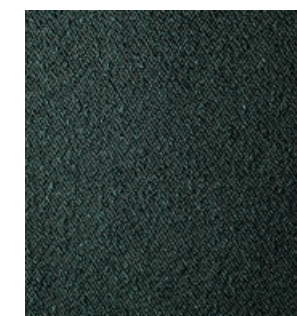
T19028_003



T19028_004



T19028_005



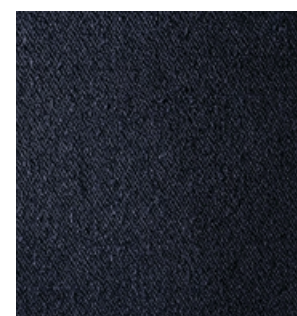
T19028_006



T19028_007



T19028_008



T19028_009

Upholstery Selection & Furniture

The MENU upholstery programme shows an overview of our textile and leather standard programme. All textile and leather collections are available in all colours. Please note that the colour references are only intended as a guide. For further information please see manufacturer websites, or contact your local MENU sales representative.

Selection of textiles or leather outside of our upholstery programme, is subject to final testing and approval. Additional deliverytime may also occur.

sorensenleather.com
kvadrat.com
nevotex.com

Upholstery Selection & Furniture

Use table to determine the upholstery options available for fabric-covered items.

	AFTERROOM COLLECTION	CO CHAIR COLLECTION	EAVE	GODOT	HARBOUR COLLECTION	KNITTING LOUNGE CHAIR	OFFSET	READY DINING CHAIR	TAILOR	TEAROOM
LEATHER										
PRICE CATEGORY 1										
Dakar, Nevotex	•	•			•	•		•	•	
Ultra, Sørensen Leather	•	•			•	•		•	•	
PRICE CATEGORY 2										
Dunes, Sørensen Leather	•	•			•	•		•	•	
Nuance, Sørensen Leather	•	•			•	•		•	•	
Shade, Sørensen Leather	•	•			•	•		•	•	
PRICE CATEGORY 3										
Royal Nubuck, Sørensen Leather	•	•			•	•		•	•	
PRICE CATEGORY 4										
Elegance, Sørensen Leather	•	•								



1

Leather Category 1

Dakar

Leather

Price category 1
Manufacturer Nevotex
Materials Aniline leather
Thickness 0.9 – 1.1 mm

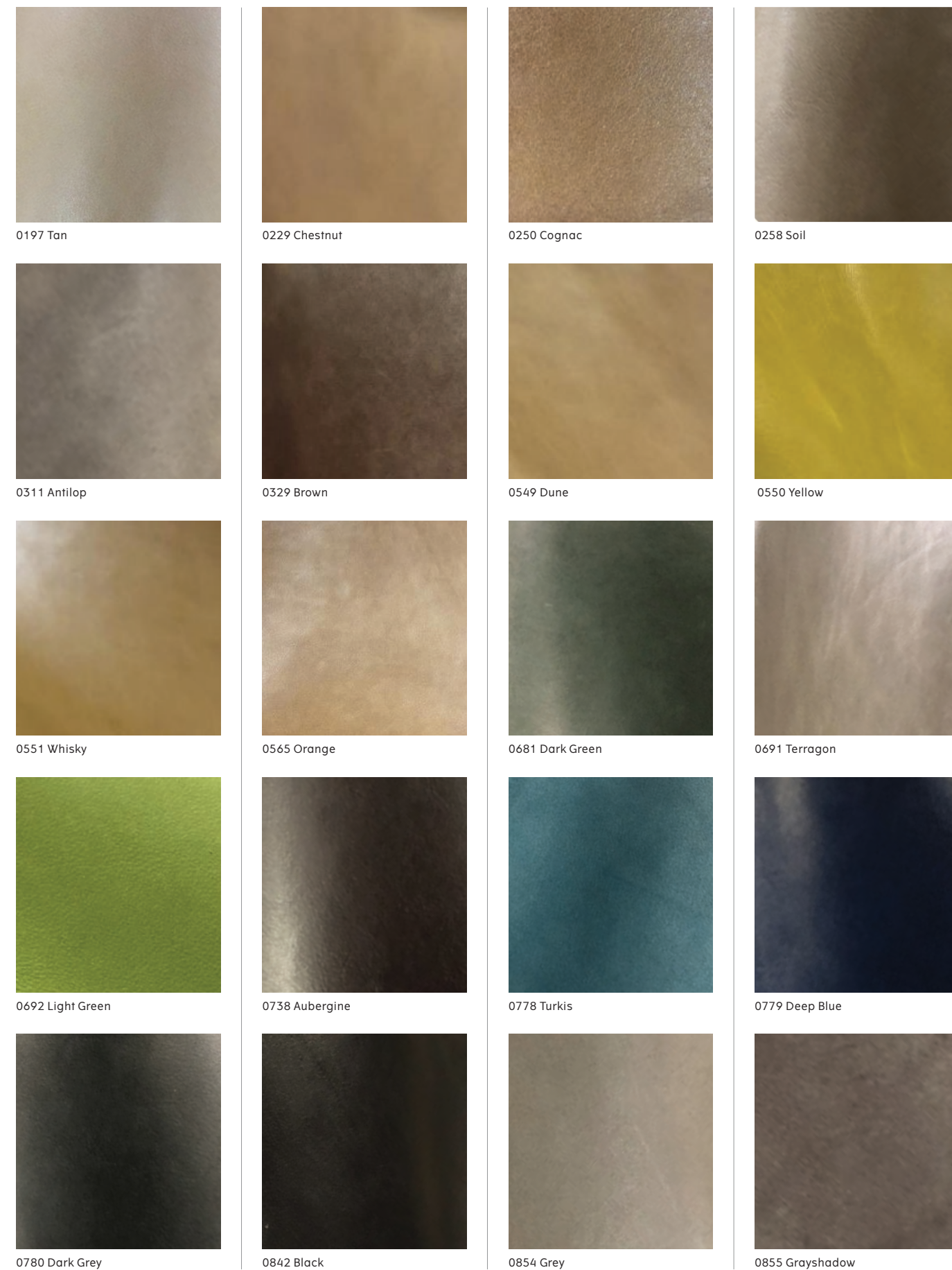


Tailor Sofa, Dark Stained Oak / Dakar 0311, by Rui Alves

Dakar

Leather

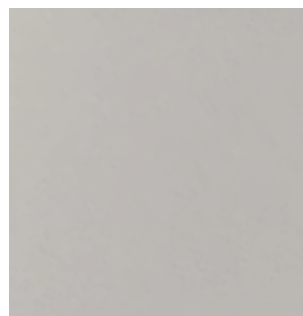
Price category 1
Manufacturer Nevotex
Materials Aniline leather
Thickness 0.9 – 1.1 mm



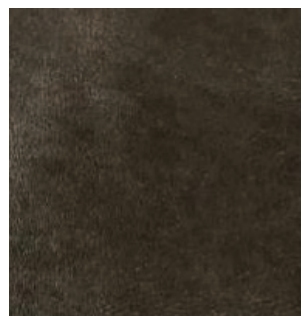
Dakar

Leather

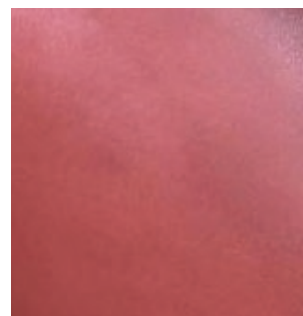
Price category 1
Manufacturer Nevotex
Materials Aniline leather
Thickness 0.9 - 1.1 mm



01015 White



03009 Ciocco



04009 Parrot



04010 Pot-Porry



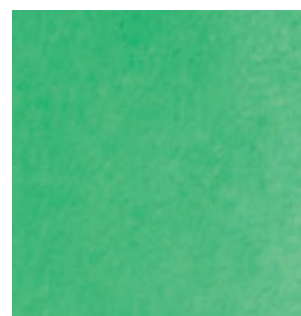
04060 Purple



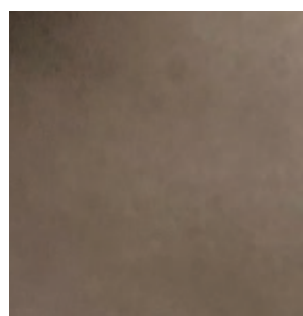
04109 Red



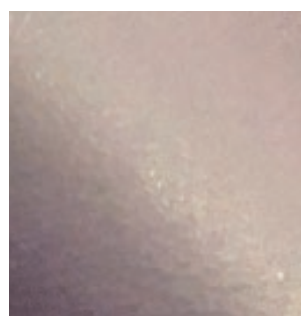
04147 Dark Red



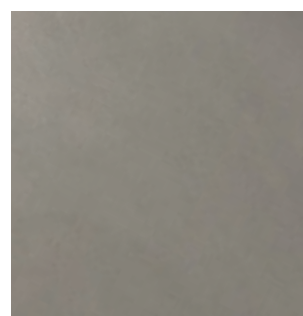
06013 Green



06048 Peatmoos



07008 Dark Purple



08079 Light Grey

Ultra

Leather

Price category 1
Manufacturer Sørensen Leather
Materials Protected leather
Thickness 0.9 - 1.1 mm



Ultra

Leather

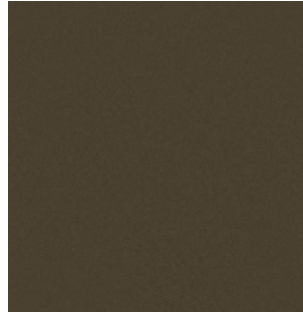
Price category 1
Manufacturer Sørensen Leather
Materials Protected leather
Thickness 0.9 - 1.1 mm



Ultra

Leather

Price category 1
Manufacturer Sørensen Leather
Materials Protected leather
Thickness 0.9 - 1.1 mm



Moss - 41569



Oat - 41568



Smoke - 41567

2

Leather Category 2

Dunes

Leather

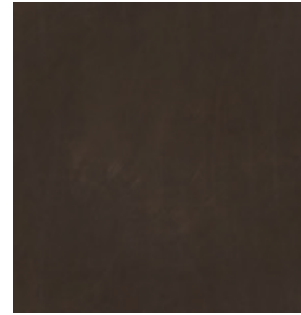
Price category 2
Manufacturer Sørensen Leather
Materials Aniline leather
Thickness 1.1 – 1.3 mm



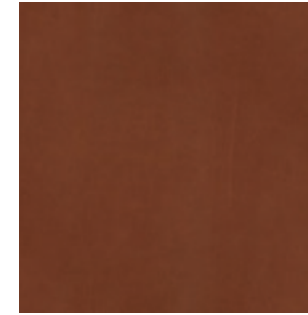
Dunes

Leather

Price category 2
Manufacturer Sørensen Leather
Materials Aniline leather
Thickness 1.1 – 1.3 mm



Dark Brown



Rust



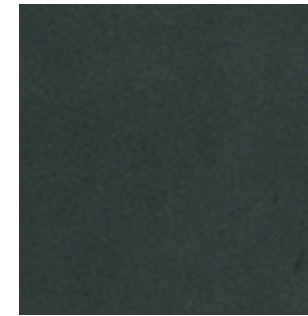
Camel



Anthrazit



Cognac



Racing Green

Nuance

Leather

Price category 2
Manufacturer Sørensen Leather
Materials Protected leather
Thickness 1.1 - 1.3 mm



Nuance

Leather

Price category 2
Manufacturer Sørensen Leather
Materials Protected leather
Thickness 1.1 - 1.3 mm



Shade

Leather

Price category 2
Manufacturer Sorensen Leather
Materials Protected Aniline leather
Thickness 1.1 - 1.3 mm



Shade

Leather

Price category 2
Manufacturer Sorensen Leather
Materials Protected Aniline leather
Thickness 1.1 - 1.3 mm



Instill

Artificial leather

Price category 2
Manufacturer Mahram
Materials Artificial leather
Lightfastness 3-6
Pilling 5



*Please note Instill is an artificial leather

Instill

Artificial leather

Price category 2
Manufacturer Mahram
Materials Artificial leather
Lightfastness 3-6
Pilling 5



3

Leather Category 3

Royal Nubuck

Leather

Price category 3
Manufacturer Sørensen Leather
Materials Aniline leather
Thickness 1.2 – 1.6 mm



Harbour Dining Chair, Dark Stained Oak / Royal Nubuck 30253, by Norm Architects

Royal Nubuck

Leather

Price category 3
Manufacturer Sørensen Leather
Materials Aniline leather
Thickness 1.4 – 1.6 mm



4

Leather Category 4

Elegance

Leather

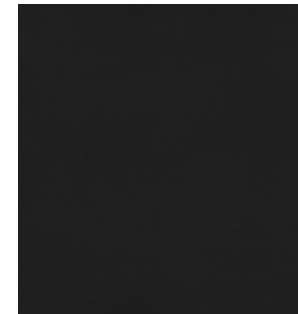
Price category 4
Manufacturer Sørensen Leather
Materials Aniline leather
Thickness 1.2 – 1.4 mm



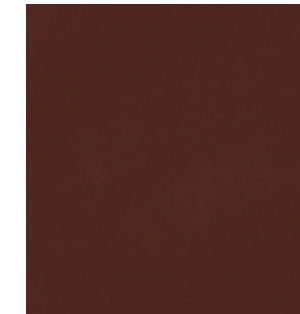
Elegance

Leather

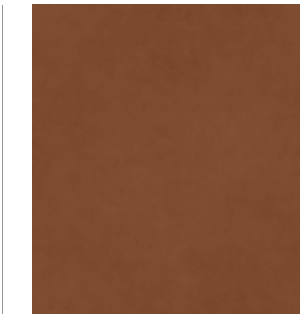
Price category 4
Manufacturer Sørensen Leather
Materials Aniline leather
Thickness 1.2 – 1.4 mm



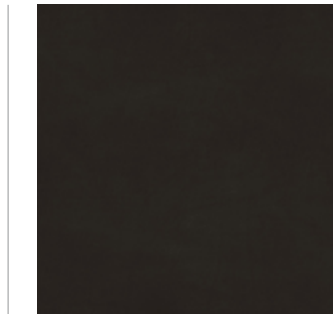
Black - 20198



Indian Red - 20193

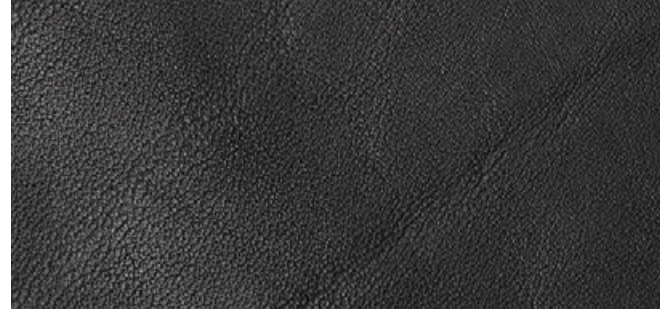


Walnut - 20195



Mocca - 20197

Natural Markings On Leather



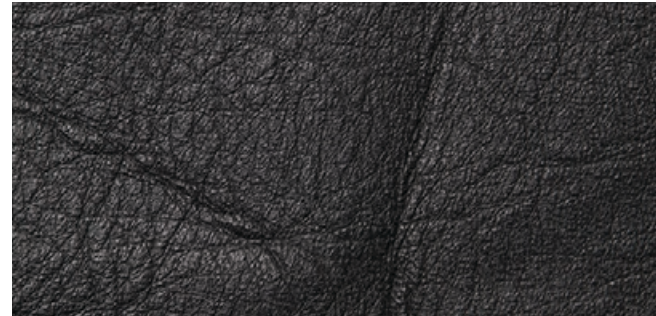
FAT WRINKLE



SCAR / INSECT BITES



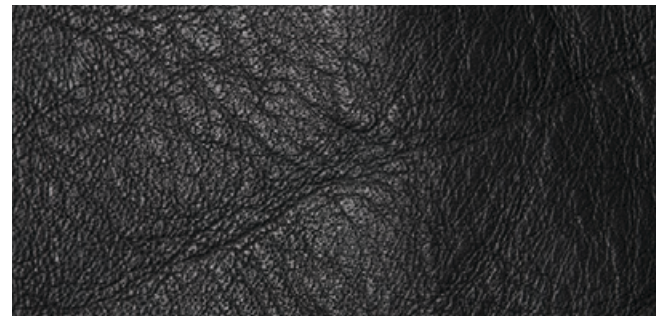
FOLDS



BUTCHING SCAR



HEALED SCARS



FAT WRINKLES

Individual and unique markings may appear on the leather and should not be considered defects.