



- METALLI / METALS
- MAGLIE METALLICHE / STEEL MESHES
- GRES PORCELLANATO / PORCELAIN STONEWARE
- LEGNI / WOODS
- CORDE SINTETICHE / SYNTHETIC ROPES
- HPL
- ABS
- CRISTALLI / GLASSES
- MATTONELLE / TILES
- CINGHIE ELASTICHE / ELASTIC BELTS
- ECO- CUIOIO / ECO-LEATHER
- TESSUTO 3D / 3D FABRICS
- TESSUTO OMBRELLONI / SUNSHADE FABRICS
- TESSUTO POLIETILENE / POLYETHYLENE FABRICS
- TESSUTO STAMPATO / PRINTED FABRICS
- CUSCINI-TEX / TEX-CUSHIONS
- EMU-TEX
- TESSUTI / FABRICS
- TAPPETI / CARPETS

## METALLI / METALS

### Acciaio

Leghe di ferro e carbonio con percentuale di carbonio inferiore al 2% trattata per resistere agli agenti atmosferici con l'esclusivo processo anticorrosione EMU-Coat.

### Steel

Iron and carbon alloy, with carbon content below 2%, treated to withstand the elements with the unique EMU-Coat anti-corrosion process.

### Alluminio

Leghe di alluminio, particolarmente idonee per la lavorazione a freddo e per la pressofusione, trattate opportunamente per resistere agli agenti atmosferici e verniciate a polvere.

### Aluminium

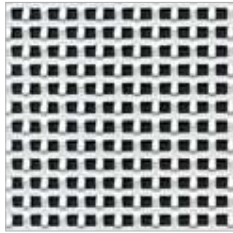
Aluminium alloys, particularly suitable for cold-working and for die-casting, appropriately treated to withstand the elements and powder coated.

<b>16</b>  AZZURRO MARINA / MARINE BLUE	<b>17</b>  VERDE MILITARE / MILITARY GREEN	<b>22</b>  FERRO ANTICO / ANTIQUE IRON	<b>23</b>  BIANCO OPACO / MATT WHITE
<b>24</b>  NERO / BLACK	<b>26</b>  ROSSO ACERO / MAPLE RED	<b>32</b>  BIANCO GHIACCIO / ICE WHITE	<b>37</b>  GRIGIO/VERDE / GREY/GREEN
<b>41</b>  MARRONE D'INDIA / INDIAN BROWN	<b>48</b>  BLU SCURO / DARK BLUE	<b>50</b>  ROSSO SCARLATTO / SCARLET RED	<b>60</b>  VERDE / GREEN
<b>61</b>  BLU / BLUE	<b>62</b>  GIALLO CURRY / CURRY YELLOW	<b>71</b>  TORTORA / TAUPE	<b>72</b>  GRIGIO NUVOVA / CLOUD GREY
<b>73</b>  CEMENTO / CEMENT	<b>75</b>  VERDE SCURO / DARK GREEN	<b>86</b>  CORTEN	<b>95</b>  SABBIA / SAND



LAMIERA INTRECCIATA  
WOVEN WIRE MESH

HEAVEN  
485 - 486 - 487



LAMIERA FINTO INTRECCIO  
SIMULATED WOVEN WIRE MESH

ALA  
150 - 151  
ATHENA  
3413 - 3425 - 3428 - 3416 - 3417 - 3419



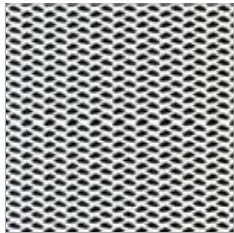
LAMIERA FINTO INTRECCIO  
SIMULATED WOVEN WIRE MESH

SOLE  
3402 - 3403



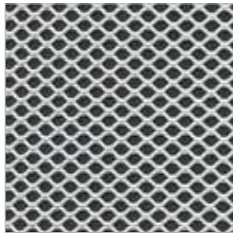
LAMIERA STIRATA  
EXPANDED METAL SHEET

MODERN  
634 - 635 - 636



LAMIERA STIRATA  
EXPANDED METAL SHEET

DARWIN  
521 - 522 - 523 - 524 - 527



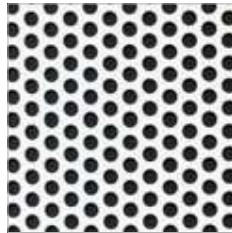
LAMIERA STIRATA  
EXPANDED METAL SHEET

CAMBI  
800 - 801 - 802 - 803 - 804 - 805  
COMO  
1200 - 1201 - 1202 - 1204 - 1205  
FICUS  
1230 - 1231 - 1232 - 1234  
NOVA  
660 - 661 - 662  
RONDA  
111 - 116 - 128  
ROUND  
465 - 466 - 467 - 468 - 469



LAMIERA STIRATA  
EXPANDED METAL SHEET

IVY  
585 - 586 - 589 - 595



LAMIERA FORATA  
PERFORATED METAL SHEET

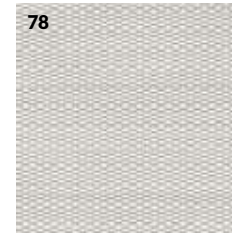
CAMBI  
807 - 808 - 809 - 810

EMU-TEX

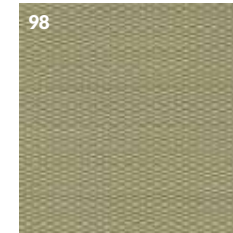
È un tessuto tecnico per esterni realizzato con filo in polivinilcloruro. Ha caratteristiche di eccezionale robustezza a garanzia di una durata nel tempo: massima resistenza ai raggi ultravioletti, agli agenti atmosferici, all'umidità e agli sbalzi di temperatura.

EMU-TEX

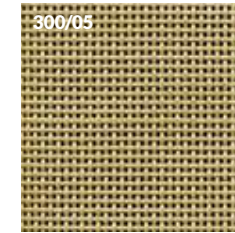
It is a technical fabric for outdoor use made with polyvinyl chloride thread. It features exceptional strength to ensure durability: maximum resistance to UV rays, the elements, humidity and sudden changes in temperature.



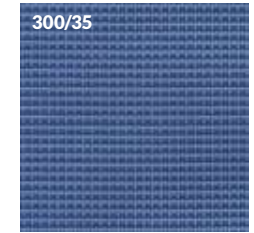
BIANCO / WHITE



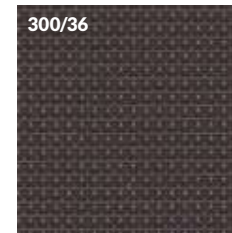
BEIGE



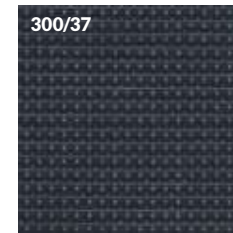
BEIGE



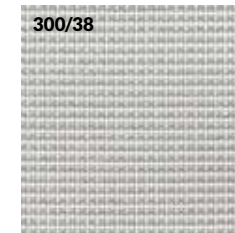
BLU / BLUE



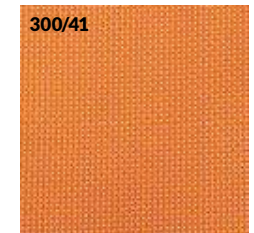
TERRA DI SIENA / DIRT OF SIENA



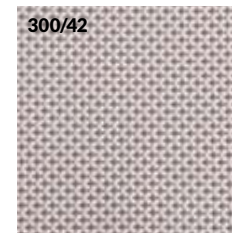
LIQUIRIZIA / LICORICE



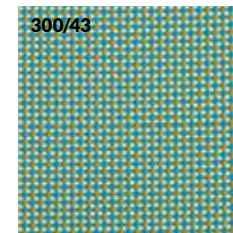
BIANCO INVERNO / WINTER WHITE



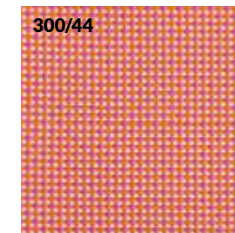
PESCA / PEACH



GHIACCIO / ICE



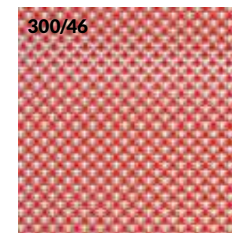
MENTA / MINT



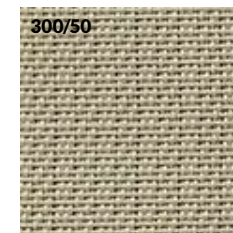
LAMPONE / RASPBERRY



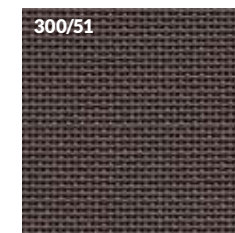
BEIGE



ROSSO / RED



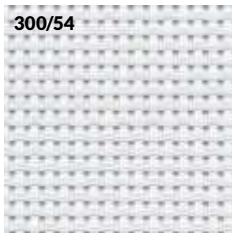
TORTORA / TAUPE



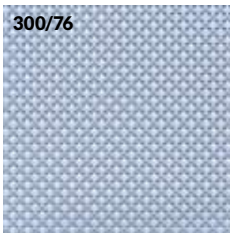
MARRONE / BROWN



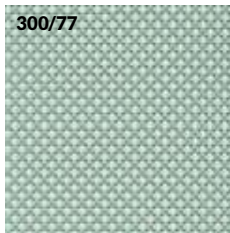
BIANCO / WHITE



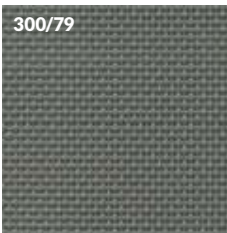
300/54  
BIANCO / WHITE



300/76  
CELESTE / SKY BLUE



300/77  
CITRONELLA / LEMONGRASS



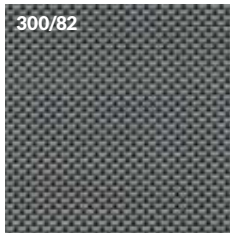
300/79  
GRIGIO/VERDE / GREY/GREEN



300/80  
SABBIA / SAND



300/81  
BLU NAVY / NAVY BLUE



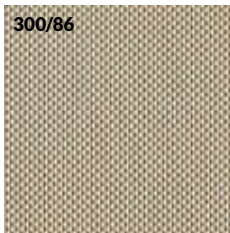
300/82  
GRIGIO/NERO / GREY/BLACK



300/83  
RUGGINE / RUST



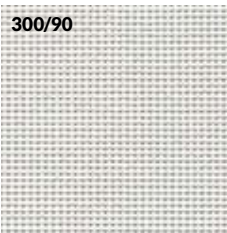
300/84  
GRIGIO CHIARO / LIGHT GREY



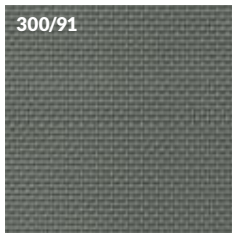
300/86  
NOCCIOLA / HAZEL



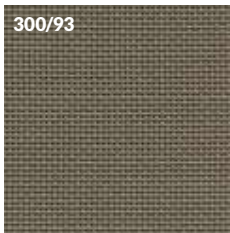
300/87  
VIOLA / PURPLE



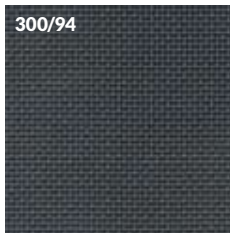
300/90  
BIANCO RUVIDO / ROUGH WHITE



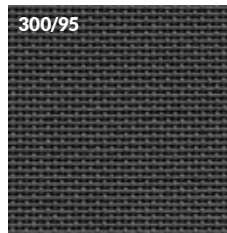
300/91  
GRIGIO/VERDE / GREY/GREEN



300/93  
MARRONE RUVIDO / ROUGH BROWN



300/94  
ANTRACITE / CHARCOAL



300/95  
NERO / BLACK

## ABS

### ABS

L'ABS è un tecnopolimero termoplastico che, una volta stabilizzato, resiste bene alle radiazioni UV e quindi è impiegabile all'esterno. Presenta buone caratteristiche meccaniche anche a basse temperature e possiede un'elevata durezza, resistenza all'urto e alla scalfitura. Tali caratteristiche lo rendono ideale per impieghi in vari settori, fra cui quello dell'arredamento.

### ABS

ABS is a thermoplastic techno-polymer that, once stabilised, resists well even against UV radiation and can therefore be used outside. It has strong mechanical features even at low temperatures and has high strength, impact and scratch resistance. These features make it ideal for use in a range of sectors, including furnishing.



23  
BIANCO / WHITE

CIAK  
974



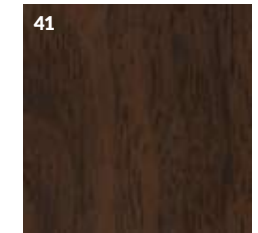
24  
NERO / BLACK

CIAK  
974



37  
GRIGIO/VERDE / GREY/GREEN

CIAK  
974



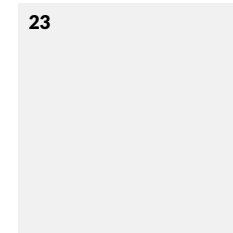
41  
MARRONE / BROWN

CIAK  
974



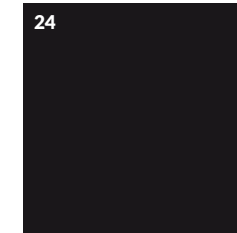
20  
GRIGIO / GREY

LUCIOLE  
2010



23  
BIANCO / WHITE

LUCIOLE  
2010



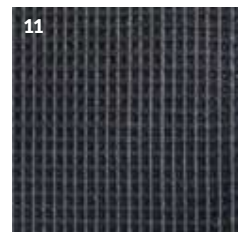
24  
NERO / BLACK

LUCIOLE  
2010

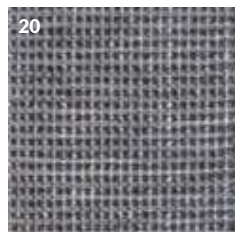
## CINGHIE ELASTICHE / ELASTIC BELTS

### Cinghia elastica

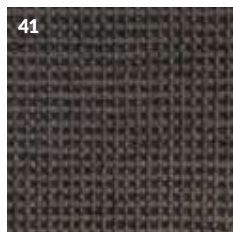
Ottenuta mediante la tessitura di materiali sintetici quali fibre di propilene (71%) e fili di gomma sintetica (29%), permette di essere usata all'esterno.



GRIGIO/NERO / GREY/BLACK



GRIGIO/VERDE / GREY/GREEN



MARRONE / BROWN

### Elastic belt

Obtained by weaving synthetic materials such as propylene fibres (71%) and synthetic rubber thread (29%), enabling it to be used outside.

## CORDE SINTETICHE / SYNTHETIC ROPES

### Corda sintetica

Doppia treccia costruita con anima in poliestere e copertura in propilene multifilamento. La fibra esterna di cui è composta è impermeabile e resistente ai raggi UV.

### Synthetic rope

Double braid with polyester core and multifilament propylene covering. The external fibre is waterproof and resistant to UV rays.

#### CAROUSEL



AVORIO MELANGIATO / MELANGE IVORY



GRIGIO MELANGIATO / MELANGE GREY



MARRONE MELANGIATO / MELANGE BROWN

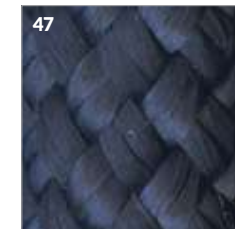
#### CROSS



VERDE / GREEN



MARRONE / BROWN

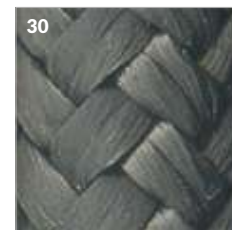


BLU / BLUE

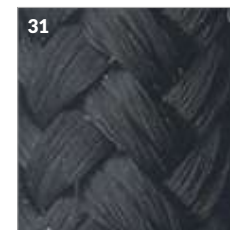


CEMENTO / CEMENT

#### NEF



GRIGIO SCURO / DARK GREY

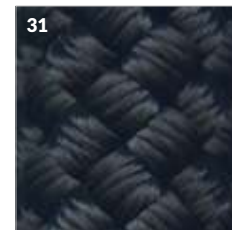


NERO / BLACK



GRIGIO CHIARO / LIGHT GREY

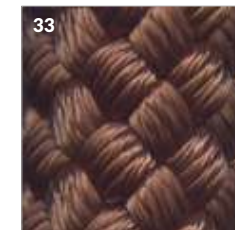
#### VETTA



NERO / BLACK



GRIGIO CHIARO / LIGHT GREY



TABACCO / TOBACCO

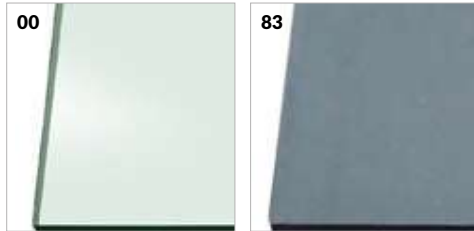
## CRISTALLI / GLASSES

### Cristallo temperato

Cristallo temperato in conformità con le normative internazionali BS 6206 e prodotto nel rispetto della normativa BS 7376.

### Tempered glass

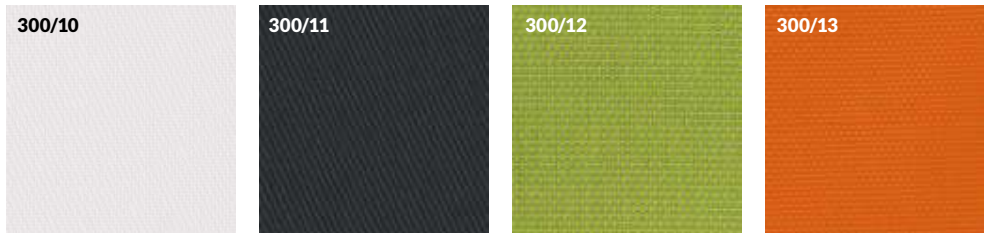
Tempered glass in compliance with international standards BS 6206 and produced in compliance with standard BS 7376.



TRASPARENTE / TRANSPARENT

GRIGIO FUMÉ / SMOKY GREY

## CUSCINI-TEX / TEX-CUSHIONS

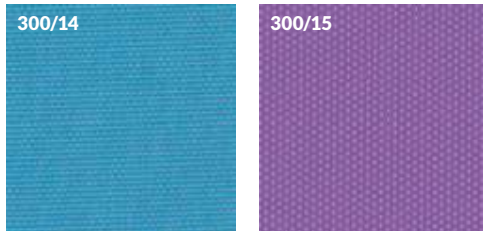


BIANCO / WHITE

ANTRACITE / CHARCOAL

VERDE / GREEN

ARANCIO / ORANGE



ACQUAMARINA / AQUAMARINE

LILLA / LILAC

## ECO-CUOIO / ECO-LEATHER

### Eco-cuoio

L'eco-cuoio è realizzato con microfibra di Nylon compattata in bagno di poliuretano. Successivamente viene spalmata con poliuretano in tinta.

### Eco-leather

The eco-leather is made of compacted Nylon micro-fibre in polyurethane bath. It is then coated with polyurethane of the same colour.



BIANCO / WHITE

MARRONE / BROWN

GRIGIO/VERDE / GREY/GREEN

NERO / BLACK

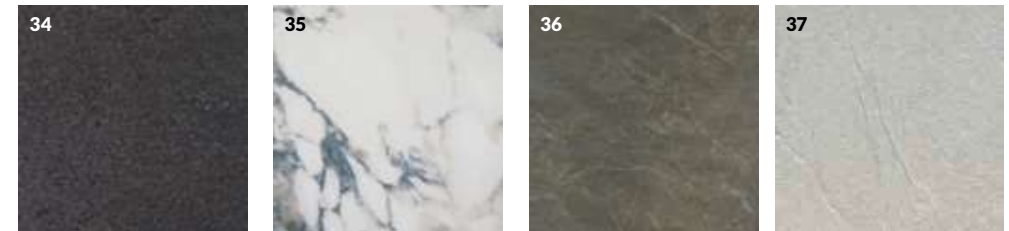
## GRES PORCELLANATO / PORCELAIN STONEWARE

### Gres porcellanato

Il gres porcellanato, grazie alle sue eccellenti proprietà fisiche e meccaniche, è ideale per uso esterno, essendo inattaccabile dagli agenti atmosferici e inalterabile ai raggi UV. Le sue qualità gli permettono di essere idrorepellente ed oleorepellente. Il gres porcellanato è ottenuto tramite il processo di sintetizzazione di argille ceramiche, feldspati, caolini e sabbia. Queste materie prime vengono macinate ed atomizzate fino ad ottenere una granulometria omogenea adatta alla pressatura. La cottura avviene a 1150-1250 °C per circa 25-30 minuti allo scopo di determinare la ceramizzazione dell'impasto attribuendone così le tipiche caratteristiche di resistenza alle abrasioni.

### Porcelain stoneware

Thanks to its excellent physical and mechanical properties, porcelain stoneware is ideal for outdoor use, since it is resistant to atmospheric corrosion and unaffected by UV exposure. Its qualities allow it to be water and oil repellent. Porcelain stoneware is obtained via the synthesizing process of ceramic clay, feldspar, kaolin and sand. These raw materials undergo grinding and atomization until a homogeneous particle size, suitable for pressing, is obtained. Firing takes place at 1150-1250°C for approx. 25-30 minutes in order to determine the ceramization of the mixture, ensuring the typical resistance to abrasion.



BASALTINA

BIANCO STATUARIO / STATUARIO WHITE

EMPERADOR

GREIGE



GRIGIO SCURO / DARK GREY

## HPL

### HPL

Materiale autoportante adatto all'esposizione all'ambiente esterno. È costituito da strati di carta Kraft impregnati con resine fenoliche e da uno strato superficiale decorativo impregnato con resine termoindurenti. Questi strati sono pressati a 9 Mp e ad una temperatura di 150 gradi centigradi.

### HPL

*Self-supporting material suitable for outdoor exposure. It consists of layers of kraft paper impregnated with phenolic resins and of a decorative surface layer impregnated with thermosetting resins. These layers are pressed at 9 Mp and at a temperature of 150 degrees centigrade.*



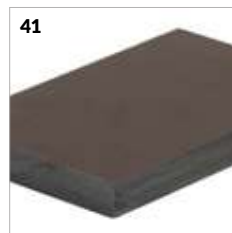
GRIGIO / GREY



BIANCO / WHITE



NERO / BLACK



MARRONE / BROWN



TORTORA / TAUPE



TAMBORA

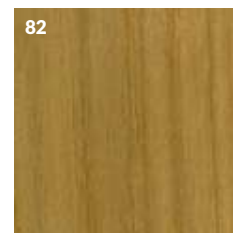
## LEGNI / WOODS

### Teak

Tradizionale legno impiegato nell'arredo da esterni dal fascino esotico intramontabile, il teak è un legno duro ad alto contenuto di olio adatto all'uso esterno senza necessità di trattamento di verniciatura. Se non riceve alcun trattamento protettivo, la superficie prenderà una patina grigio argento, naturale protezione della parte interna del legno, considerata un elemento essenziale del fascino del teak. Il teak utilizzato per i prodotti EMU è certificato FSC®.

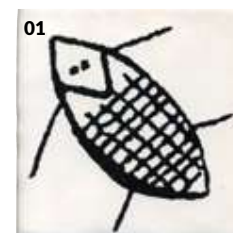
### Teak

*Traditional wood used for outdoor furniture with an exotic and timeless appeal. Teak is a hard wood with a high oil content suitable for outdoor use, without the need for painting. If it does not receive any protective treatment, the surface will weather into a silvery-grey finish, the natural protection of the internal part of the wood, considered an essential part of teak's charm. The teak used for EMU products is FSC® certified.*

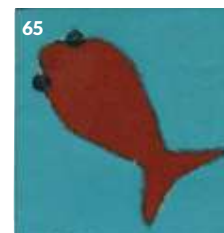


TEAK / TEAK

## MATTONELLE / TILES



MATTONELLE CON SCARABEO  
TILES WITH SCRABBLE



MATTONELLE CON PESCE  
TILES WITH FISH

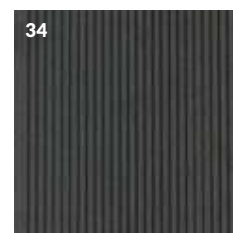
## WPC

### WPC

Il WPC è un materiale composito costituito da fibre di legno e HDPE. I semilavorati sono ottenuti tramite estrusione del composito. È un materiale resistente ai raggi UV, agli agenti atmosferici e all'umidità. Il WPC non si scheggia e non viene danneggiato da batteri o insetti. Si tratta di un materiale dalla facile manutenzione. Non deve essere protetto da verniciature.

### WPC

*WPC is a composite material made from wood fibers and HDPE. Semi-finished products are obtained by extruding the composite. This material is resistant to UV rays, atmospheric agents and humidity. WPC does not chip and is not damaged by bacteria or insects. It is a material that requires little maintenance. It does not need to be painted for protection.*



ANTRACITE / CHARCOAL

## TESSUTO COOL-LÀ / COOL-LÀ FABRICS

900/98



\*BIANCO 3D / 3D WHITE  
\*POLIESTERE / POLYESTER

900/85



FANTASIA / FANTASY

## TESSUTI OMBRELLONI / SUNSHADE FABRICS

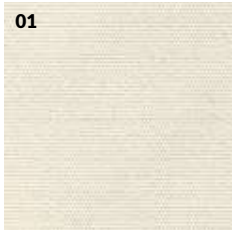
### Tessuto in poliestere

È una fibra formata da macromolecole lineari costituite prevalentemente da polietilentereftalato. Ha elevate caratteristiche meccaniche: resiste alla rottura, alla luce, all'abrasione, non si deforma in modo permanente, ha un ottimo recupero elastico ed è idrorepellente.

### Polyester fabric

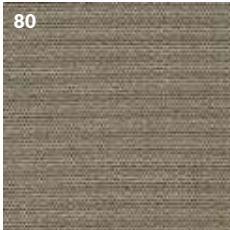
A fibre composed of linear macromolecules consisting mainly of polyethylene terephthalate. It has excellent mechanical properties: it withstands breakage, light and abrasion. It does not deform permanently, it has an excellent elastic recovery and is waterproof.

01



BIANCO / WHITE

80



TORTORA / TAUPE

95



NERO / BLACK

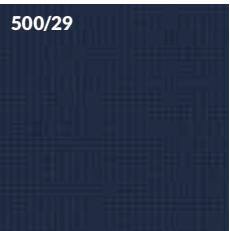
## TESSUTO POLIESTERE / POLYESTER FABRIC

500/28



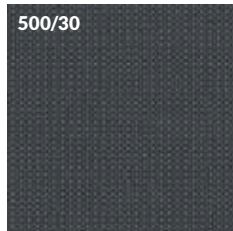
BEIGE

500/29



BLU / BLUE

500/30



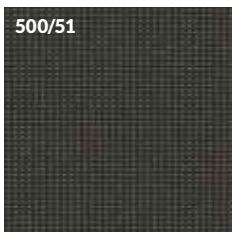
GRIGIO / GREY

500/31



AVORIO / IVORY

500/51



MARRONE / BROWN

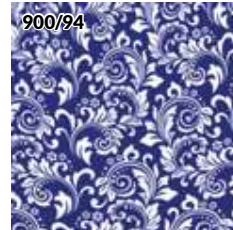
## TESSUTO STAMPATO / PRINTED FABRIC

900/93



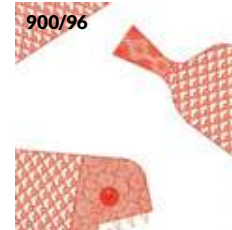
RETE VERDE / GREEN NET

900/94



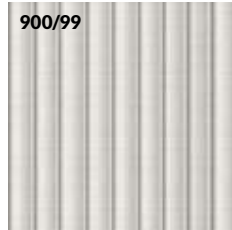
FIORI BLU / BLUE FLOWERS

900/96



PESCI ROSSI / RED FISHES

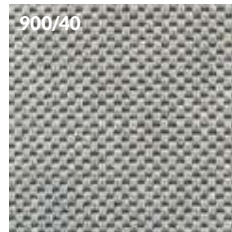
900/99



PLISSETTATO / PLEATED

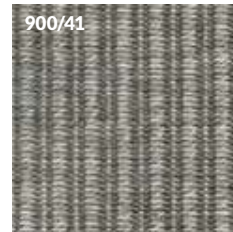
## TESSUTI TAPPETI / RUGS FABRICS

900/40



GRIGIO CHIARO / LIGHT GREY

900/41



GREIGE / GREIGE

900/42



MARRONE / BROWN

900/43

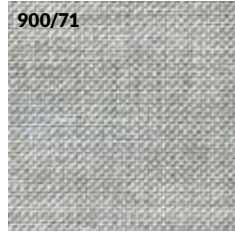


FANTASIA / FANTASY

## TESSUTI TAMI / TAMI-FABRICS



**900/70**  
BIANCO TRAMA LARGA (solo cuscino)  
BIG WEFT WHITE (cushion only)



**900/71**  
BIANCO TRAMA STRETTA (solo struttura)  
SMALL WEFT WHITE (frame only)



**900/72**  
VERDE TRAMA LARGA (solo cuscino)  
BIG WEFT GREEN (cushion only)



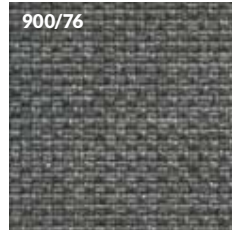
**900/73**  
VERDE TRAMA STRETTA (solo struttura)  
SMALL WEFT GREEN (frame only)



**900/74**  
MARRONE TRAMA LARGA (solo cuscino)  
BIG WEFT BROWN (cushion only)



**900/75**  
MARRONE TRAMA STRETTA (solo struttura)  
SMALL WEFT BROWN (frame only)



**900/76**  
GRIGIO TRAMA LARGA (solo cuscino)  
BIG WEFT GREY (cushion only)



**900/77**  
GRIGIO TRAMA STRETTA (solo struttura)  
SMALL WEFT GREY (frame only)



**900/78**  
BLU TRAMA LARGA (solo cuscino)  
BIG WEFT BLUE (cushion only)



**900/79**  
BLU TRAMA STRETTA (solo struttura)  
SMALL WEFT BLUE (frame only)

## TESSUTI BASIC / BASIC FABRICS

Tessuto acrilico: si intende una fibra il cui elemento di base è una catena di polimeri composta all'85% da acrilonitrile. La fibra acrilica unisce alle qualità estetiche di un tessuto lussuoso, dalla corposità e dal touch assimilabili a quelli della lana, le qualità funzionali di resistenza agli agenti atmosferici: resiste ai raggi UV, non si macchia e non imputridisce all'acqua grazie alla velocità di asciugatura.

*Acrylic fabric: a fibre whose base element is a polymer chain consisting of 85% acrylonitrile. Acrylic fibre combines the aesthetic qualities of a luxurious fabric with the texture and feel of wool with the functional qualities of resistance to the elements: UV resistant, it does not stain and does not rot upon contact with water as it is fast-drying.*



**700/4**  
ECRU



**700/12**  
BIANCO / WHITE



**700/22**  
GRIGIO / GREY

## TESSUTI DECOR / DECOR FABRICS

I nuovi tessuti decorativi EMU, caratterizzati da una texture rigata e dalla vivaci e molteplici colorazioni, vestono con eleganza e carattere i diversi spazi all'aperto. Il tessuto 100% acrilico viene internamente spalmato con poliuretano; tale processo lo rende idrorepellente, altamente resistente ai raggi UV per un'ottima performance nelle aree outdoor.

*EMU's new decorative fabrics feature a striped texture and a wide and lively range of colours to grace a variety of outdoor spaces with elegance and character. The 100% acrylic fabric is combined with a polyurethane internal coating. This step makes it water-repellent, highly resistant to UV rays for excellent outdoor performance.*



**900/61**  
BIANCO / WHITE



**900/62**  
MARRONE / BROWN



**900/63**  
GRIGIO SCURO / DARK GREY





900/64

GRIGIO CHIARO / LIGHT GREY



900/65

HIBISCUS



900/66

TURCHESE / TURQUOISE



900/67

GESSATO / PINSTRIPE



900/68

JEANS



900/69

GREIGE



900/80

MARRONE SCURO / DARK BROWN

## INFORMAZIONI TECNICHE / TECHNICAL INFORMATION

ICONA	DESCRIZIONE	NOTE
	resistente all'esterno <i>resistant to outdoor exposure</i>	
	impilabile <i>stackable</i>	Il numero accanto all'icona indica il numero massimo di sedie impilabili. <i>The number at the top gives the maximum number of chairs that can be stacked.</i>
	cuscino sedile + schienale <i>seat-back cushion</i>	Indica che al prodotto può essere abbinato il cuscino sedile + schienale. <i>Indicates that a seat-back cushion can be combined with the product.</i>
	cuscino sedile <i>seat cushion</i>	Indica che al prodotto può essere abbinato il cuscino sedile. <i>Indicates that a seat cushion can be combined with the product.</i>
	cuscino schienale <i>back cushion</i>	Indica che al prodotto può essere abbinato il cuscino schienale. <i>Indicates that a back cushion can be combined with the product.</i>
	piano in cristallo <i>glass top</i>	Indica che al prodotto può essere abbinato il piano in cristallo. <i>Indicates that a glass top can be combined with the product.</i>
	allungabile <i>extensible</i>	
	pieghevole <i>folding</i>	
	abbattibile <i>collapsible</i>	
	reclinabile <i>reclining</i>	
	cover	Indica che al prodotto può essere abbinato il telo di protezione. <i>Indicates that a matching protective cover can be combined with the product.</i>