

# NORR11

# MATERIAL GUIDE



## WOOD

OAK/BEECH/ASH 3

## CAT 1

BARNUM BOUCLÉ 4

NINA LINEN 7

BRUSSELS VELVET 10

CURA 12

## CAT 2

FAME 16

REMIX 21

RE-WOOL 25

CANVAS 2 27

## CAT 3

HALLINGDAL 65 30

STEELCUT TRIO 3 35

FIORD 2 39

ULTRA 42

## CAT 4

SPECTRUM NOIR 43

DUNES 44

## CAT 5

SHEEPSKIN 46

## OTHER MATERIALS

MARBLE 50

METALS 51

PAPER CORD AND RATTAN 51

PLASTIC SEAT 52

SUNBRELLA NATTE 48



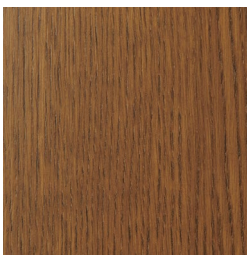
OAK NATURAL



BEECH NATURAL



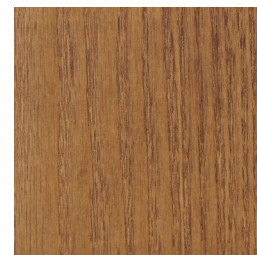
ASH NATURAL



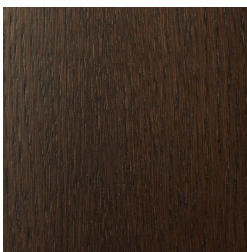
OAK LIGHT SMOKED



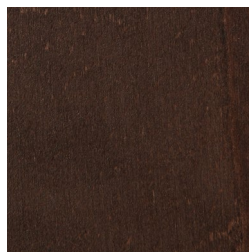
BEECH LIGHT SMOKED



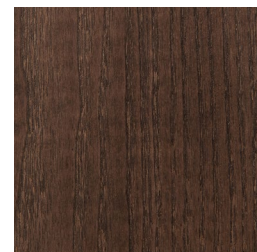
ASH LIGHT SMOKED



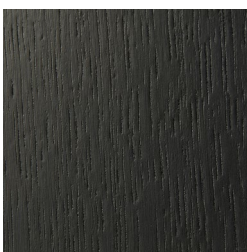
OAK DARK SMOKED



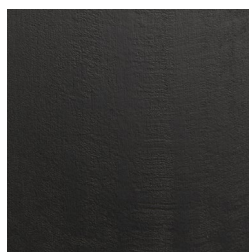
BEECH DARK SMOKED



ASH DARK SMOKED



OAK BLACK



BEECH BLACK



ASH BLACK

Wood is a natural material and may vary from batch to batch. Variations in wood structure and colour are part of the timber characteristics of the wood and applying lacquer will further enhance these characteristics.

All our wood is FSC certified, sourced within the EU and coated with a water based lacquer.

Customised stain colours can be requested and must be approved and priced prior to production.



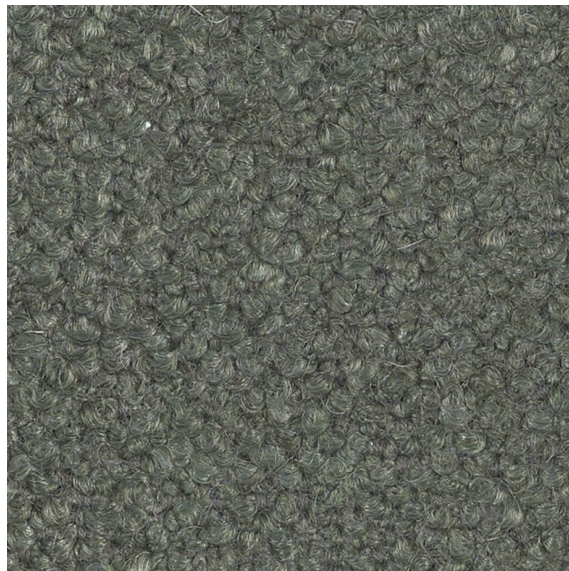
COL 1



COL 24



COL 5



COL 8



COL 2



COL 21



COL 17



COL 4



COL 23



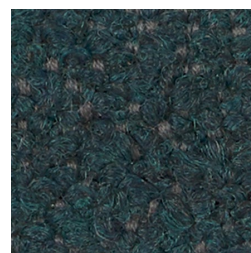
COL 18



COL 9



COL 22



COL 20



COL 7



COL 3



COL 15



COL 10



COL 14



COL 11



COL 6



COL 12



COL 16



COL 13



COL 19

**SCHEDA TECNICA/ TECHNICAL SHEET**

COMPOSIZIONE/ COMPOSITION	CO 45 WO 15 AC 13 VI 19 NY 8
ALTEZZA/ WIDTH	140 CM
PESO/ WEIGHT	950 GR/MTL
COD. NOMENCLATURA/ TARIFF CODE	54078400

VARIAZIONE DIMENSIONE AI LAVAGGI/ DIMENSIONAL STABILITY

LAVAGGIO A SECCO DRY CLEANING	UNI EN ISO 3175-2:2010	ORDITO/WARP -4,8/-4,4 TRAMA/WEFT -3,1/-1,3
----------------------------------	------------------------	---

SOLIDITA' DEL COLORE/ COLOUR FASTNESS

SOLIDITA' ALLO SFREGAMENTO SECCO / DRY RUBBING	UNI EN ISO 105 X 12:2016	WARP 4-5 WEFT 4-5
SOLIDITA' ALLO SFREGAMENTO UMIDO/ WET RUBBING	UNI EN ISO 105 X 12:2016	WARP 4-5 WEFT 4-5
SOLIDITA' COLORI ALLA LUCE LIGHTFASTNESS	UNI EN ISO 105 B02:2014	5

CARATTERISTICHE FISICO-MECCANICHE/ TECHNICAL CHARACTERISTIC

PILLING	UNI EN ISO 12945-2:2002	4
---------	-------------------------	---

RESISTENZA ALLA LACERAZIONE TEAR STRENGTH	UNO EN ISO 13937-3:2002	N.D N: ORDITO / WARP 194,5 N: TRAMA / WEFT
RESISTENZA ALLA TRAZIONE TENSILE STRENGTH	UNI EN ISO 13934-2:2014	540 N: ORDITO / WARP 640 N: TRAMA / WEFT
RESISTENZA DELLE CUCITURE SEAM SLIPPAGE	UNI EN ISO 13936-2:2004	7,1 mm ORDITO / WARP 9,8 mm TRAMA / WEFT
RESISTENZA DEL TESSUTO ALLA ABRASIONE / MARTINDALE	UNI ES ISO 12947-1:2000+UNI EN ISO 12947-2:2017	60.000 GIRI END POINT AT RUBS

RESISTENZA FUOCO FLAME RETARDANT		
*CIGARETTE TEST	BS 5852-1:1979	PASS
*MATCH TEST	BS 5852-1:1979	PASS
*CALIFORNIA	TB 117:2013	PASS

LAVAGGIO/CLEANING INSTRUCTION





COL 37



COL 350



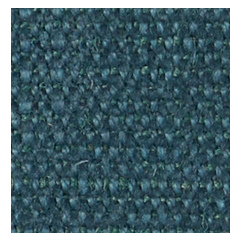
COL 2



COL 64



COL 49



COL 309



COL 53



COL 31



COL 5



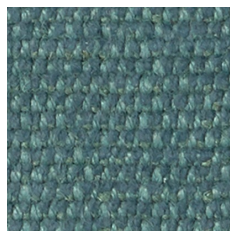
COL 311



COL 140



COL 33



COL 352



COL 27



COL 32



COL 63



COL 23



COL 128



COL 6



COL 58



COL 54



COL 18



COL 51



COL 28



COL 55



COL 21



COL 52



COL 46



COL 40



COL 39



COL 4



**SCHEDA TECNICA/TECHNICAL SHEET**

COMPOSIZIONE/COMPOSITION	39 LI – 27 JU – 24 VI – 10 CO
ALTEZZA/ WIDTH	140 CM
PESO/ WEIGHT	1000 GR/ MTL
COD. NOMENCLATURA/ TARIFF CODE	53092900

**SOLIDITA' DEL COLORE/COLOUR FASTNESS**

SOLIDITA' ALLO SFREGAMENTO SECCO / DRY RUBBING	UNI EN ISO 105 X 12	4 / 5
SOLIDITA' ALLO SFREGAMENTO UMIDO/ WET RUBBING	UNI EN ISO 105 X 12	4
SOLIDITA' COLORI ALLA LUCE LIGHTFASTNESS	ISO 105 B 02	4 / 5

**CARATTERISTICHE FISICO-MECCANICHE / TECHNICAL CHARACTERISTIC**

PILLING	ISO 12945-2	4
---------	-------------	---

RESISTENZA ALLA LACERAZIONE TEAR STRENGTH	EN ISO 13937 - 3	Ordito 72.1 N - warp Trama 58.1 N - weft
RESISTENZA ALLA TRAZIONE TENSILE STRENGTH	EN ISO 13934 – 1	Ordito 621.5 N - warp Trama 1102.4 N - weft
RESISTENZA DELLE CUCITURE SEAM SLIPPAGE	EN ISO 13936 – 2 (18 KG)	2.5 mm - warp 2.0 mm - weft
RESISTENZA DEL TESSUTO ALLA ABRASIONE / MARTINDALE	ISO 12947 – 2	30.000 GIRI END POINT AT RUBS

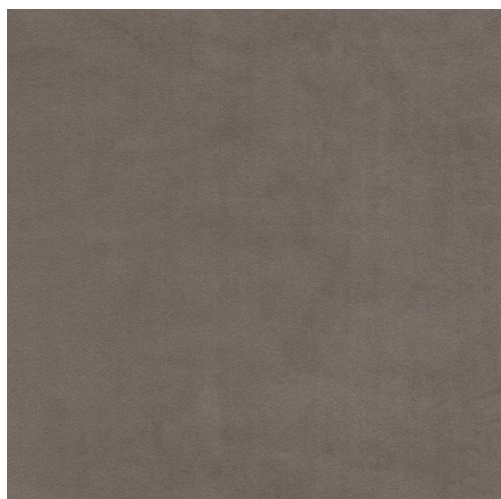
**RESISTENZA FUOCO / FLAME RETARDANT BS 5852**

* CIGARETTE TEST	PART 1	SI / YES
* BUTANE FLAME	SECTION 4	SI / YES

**LAVAGGIO/CLEANING INSTRUCTION**

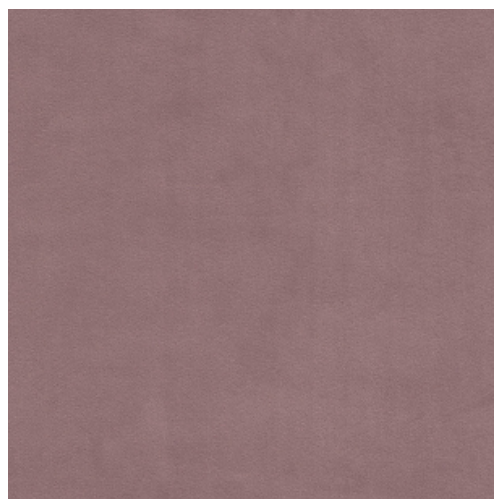


Differenze di tonalità, altezza pelo, pesi, ecc.. sono inevitabili in quanto dovute all'artigianalità della lavorazione. Non costituiscono difetto, ma sono ulteriore indice della qualità artigianale del prodotto.



Taupe

710



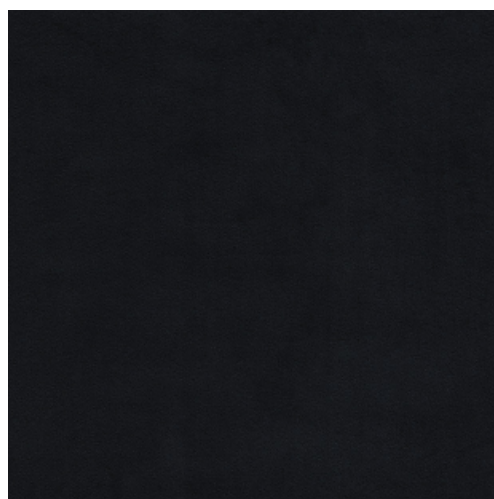
Rose wood

1670



Olive

751



Midnight Blue

1678



# Brussels



product profile for upholstery fabrics in living areas | according to DIN EN 14465:2006

roll length:	~40 m	width:	140 cm +   - 2 cm
useable width:	140 cm +   - 2 cm	weight m DIN EN 12127:	560 g +   - 5 %
material thickness:	1.1 mm +   - 2 %	weight m <sup>2</sup> DIN EN 12127:	398 g +   - 5 %



composition surface | EU 1007/2011: 100% polyester



composition base | EU 1007/2011: 100% polyester



abrasion test | EN ISO 12947-1,2: >50.000 cycles (loss of pile) >100.000 cycles (Martindale)



pilling test | EN ISO 12945-2 (2.000 T): 4-5 category A



tensile strength | EN ISO 13934-1:  
warp: 650 N category A  
weft: 610 N category A



tear growth resistance | EN ISO 13937-3:  
warp: 94 N category A  
weft: 46 N category A



resistance to seam slippage | EN ISO 13936-2:  
warp: 2.0 mm category A  
weft: 2.0 mm category A



fastness to rubbing | EN ISO 105-X12 dry:  
bright colours: 5 category A  
dark colours: 4-5 category A



fastness to rubbing | EN ISO 105-X12 wet:  
bright colours: 5 category A  
dark colours: 4 category A



fastness to light | EN ISO 105-B02-2:  
bright colours: 5 category B  
fastness to light | EN ISO 105-B02-2:  
dark colours: 5 category B



permissible colour tolerance | DIN EN 20105-A02: min. grade 4 passed

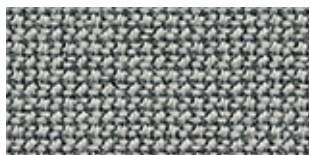


water repellent finishing

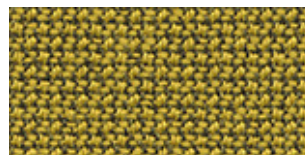


5 years warranty against abrasion

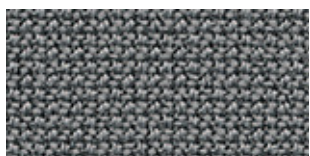
Test results were gathered from various samples and therefore represent average indicative values.



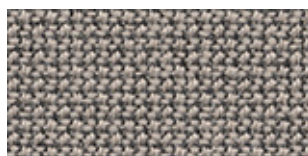
60112



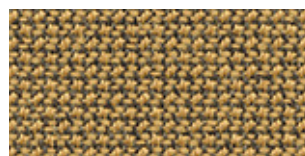
62084



60110



61168



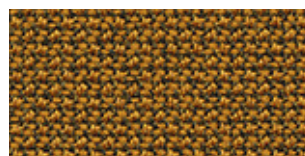
62083



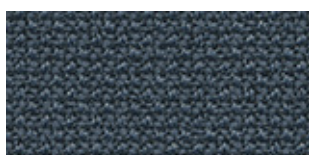
60109



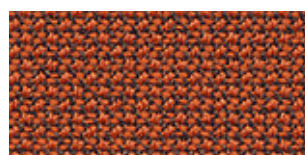
61169



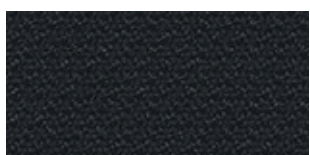
62082



66166



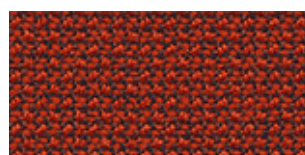
63078



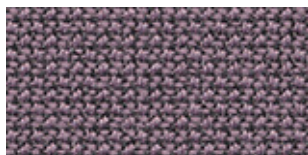
60111



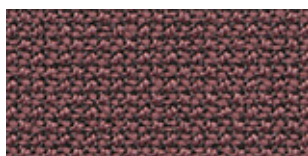
60019



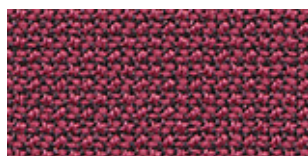
63012



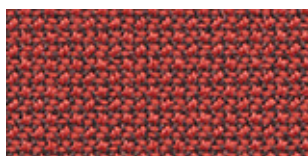
64194



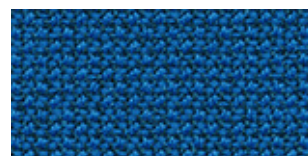
64195



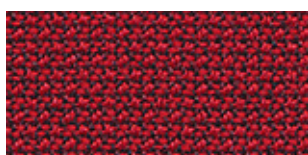
64193



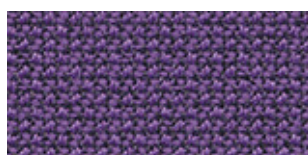
64197



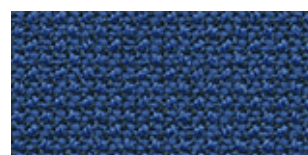
66168



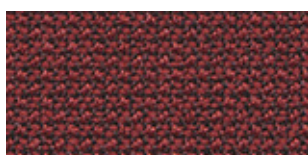
64013



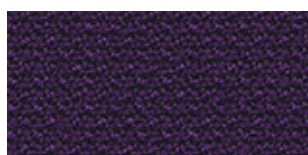
65104



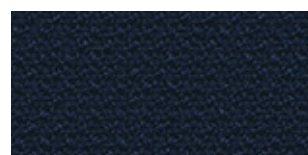
65105



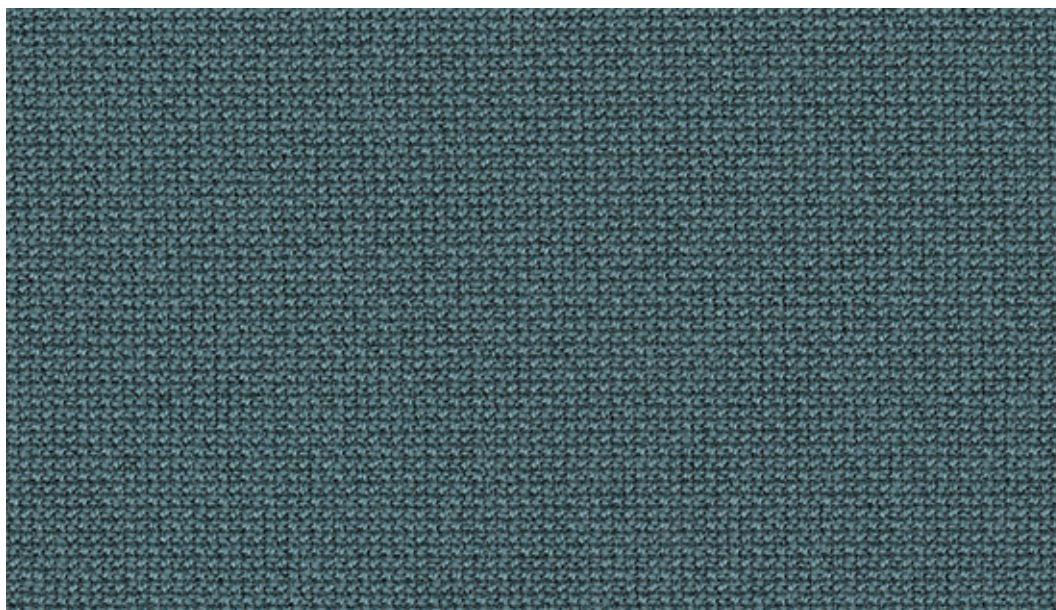
64196



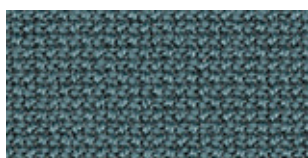
65106



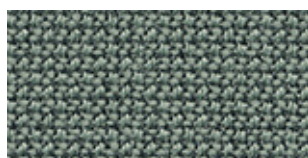
66169



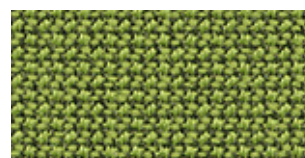
68187



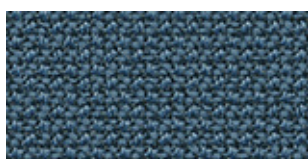
68187



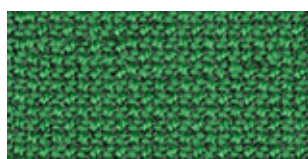
68186



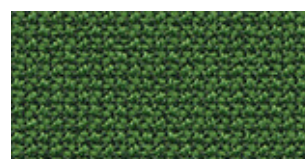
68180



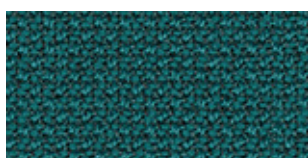
66167



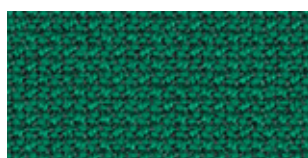
68184



68183



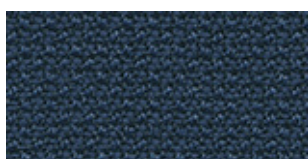
67084



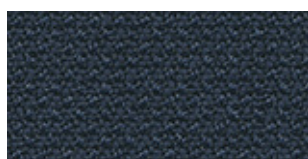
68185



68181



66170



66165



68182

Cura specifications: [www.gabriel.dk](http://www.gabriel.dk)

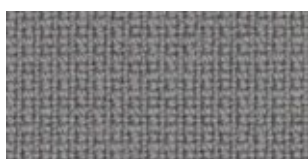
Please be aware that the PDF colour shades can appear different from the real fabric colours.  
We advise you to request actual fabric samples before ordering.



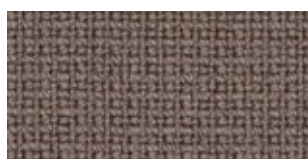
60005



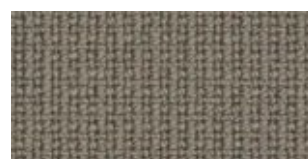
61136



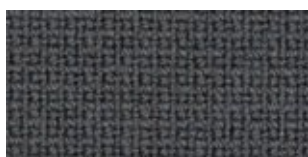
60078



61135



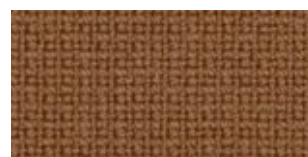
61003



60003



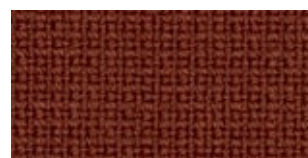
61060



61131



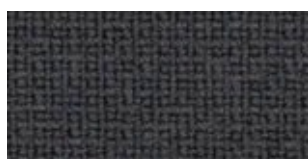
61133



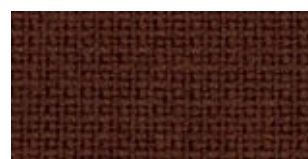
63076



60017



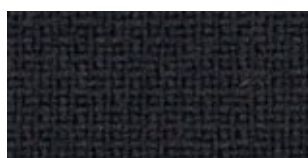
60019



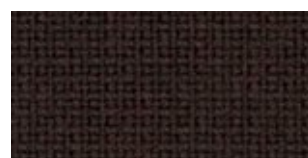
61047



60999



60051



61044

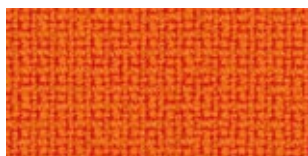




63077



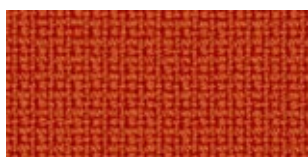
64169



63016



64165



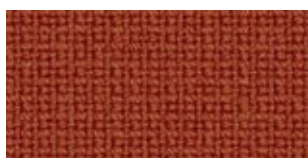
63078



64166



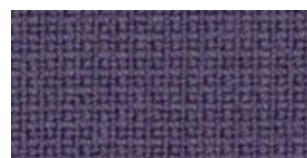
65081



64168



64119



65082



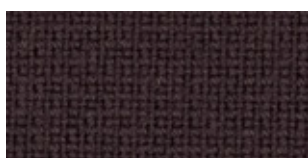
64167



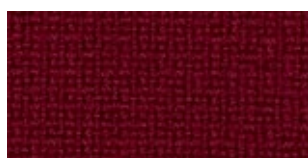
64089



64055



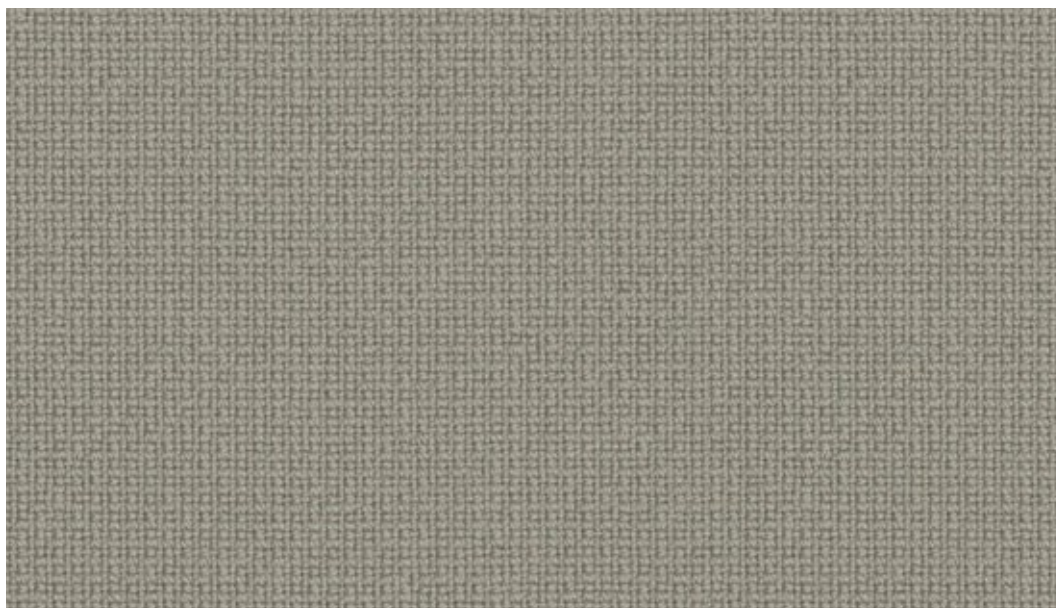
61108



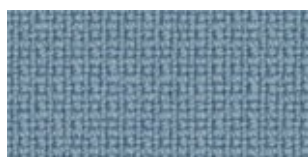
64058



66132



61136



66130



67068



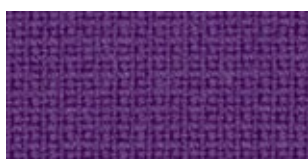
65083



66118



66133



65084



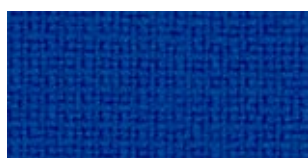
66131



67016



66005



66075



67004



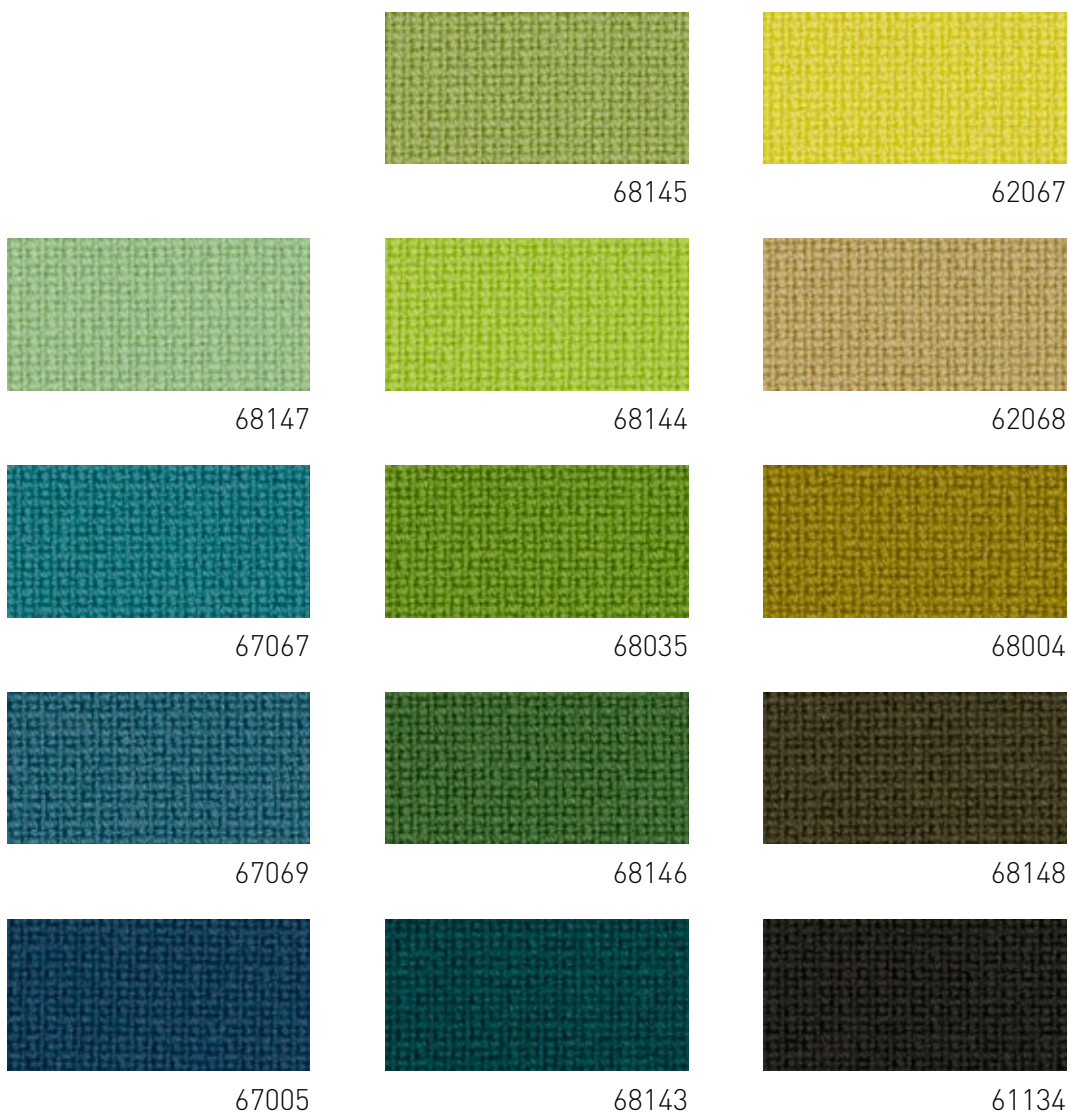
66061



66032

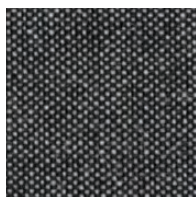


66071

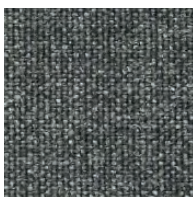


Fame specifications: [www.gabriel.dk](http://www.gabriel.dk)

Please be aware that the PDF colour shades can appear different from the real fabric colours.  
We advise you to request actual fabric samples before ordering.



152



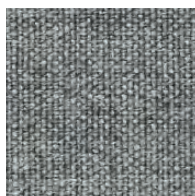
163



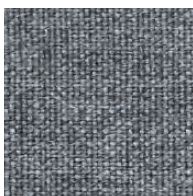
276



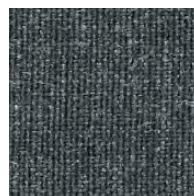
286



133



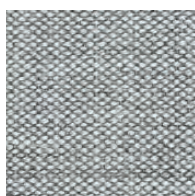
143



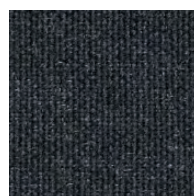
173



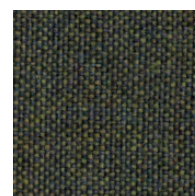
113



123



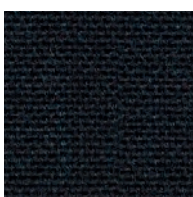
183



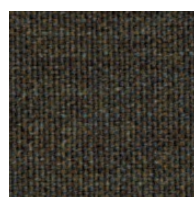
842



906



196



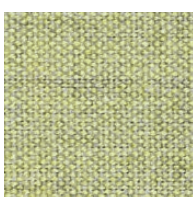
954



962



912



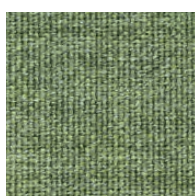
923



412



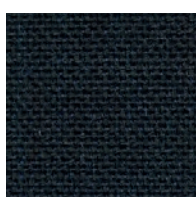
982



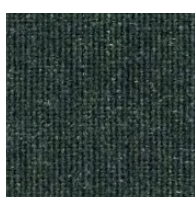
933



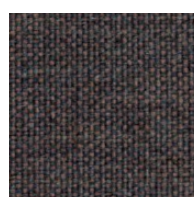
942



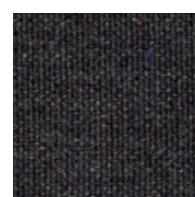
996



973



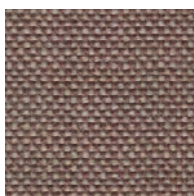
672



362



346



326



242



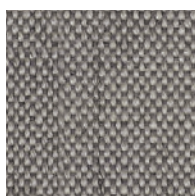
356



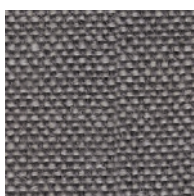
233



223



126



136



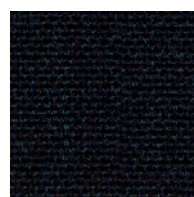
393



682



266



296



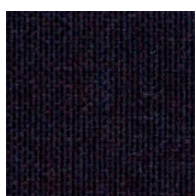
406



686



252



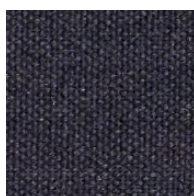
692



606



433



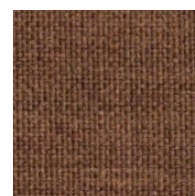
783



383



422



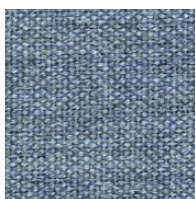
452



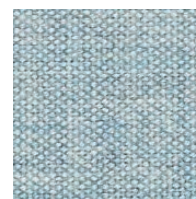
866



836



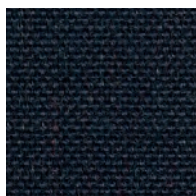
733



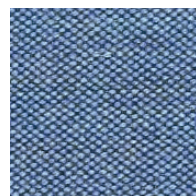
823



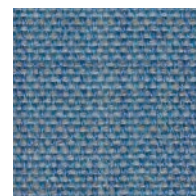
773



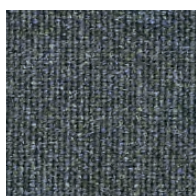
796



743



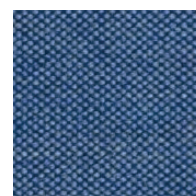
816



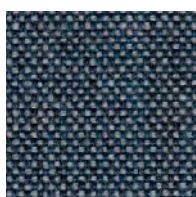
753



722



762



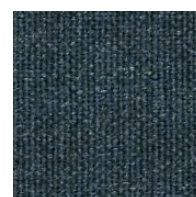
716



516



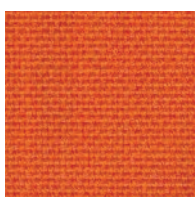
852



873



543



536



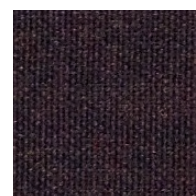
632



443



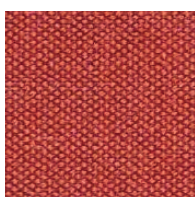
612



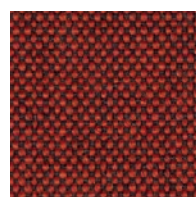
373



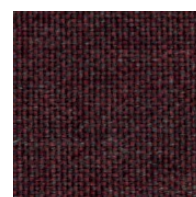
653



643



566



662

## Remix 3

Designed by Giulio Ridolfo

DK

**Anvendelse** Kontorer, hoteller, institutioner, private indretninger. Stor slidstyrke.

**Beskrivelse** 90% ny uld, kamgarn, 10% nylon. Bredde ca. 140 cm. Vægt ca. 420 g/lbm.

Materialefarvet. Nuanceforskel kan forekomme.

**Egkant** ⇄

**Slidstyrke:** Ca. 100.000 slidbevægelser efter Martindale metoden EN ISO 12947. **Lysægthed** (ISO) 5-7. **Pilling** (EN ISO) 4. **Gnidægthed** (ISO) tør 4-5, våd 3-5. **Lydabsorption** (EN ISO 354) 0.55/Class D (fladt), 0.80/Class B (foldet). **Airflow** 465 Pa s/m. **Flammesikring:** AS/NZS 1530.3. AS/NZS 3837 Class 2. ASTM E84 class A. BS 5852 Crib 5 med flammesikring. BS 5852 ignition source 3. BS 5852 part 1. EN 1021-1/2. GB 50222 B1 med flammesikring. IMO FTP Code 2010:Part 7 med flammesikring. IMO FTP Code 2010:Part 8. NF D 60 013. NFPA 260. SN 198 898 5.3 med flammesikring. UNI 9175 11M. US Cal. Bull. 117-2013. ÖNORM B1 / Q1. (Kopi af testrapport kan rekvireres).

**Velegenhed** Se ISO symboler.

UK/US

**Application** Offices, hotels, institutions, domestic use. Great durability.

**Description** 90% new wool, worsted, 10% nylon. Width app. 55 inches (140 cm). Weight app. 13.5 oz/ly (420 g/lin.m). Material dyed. Colour differences may occur.

**Selvedge/Direction** ⇄

**Abrasion:** App. 100,000 rubs acc. to the Martindale method EN ISO 12947. **Lightfastness** (ISO) 5-7. **Pilling** (EN ISO) 4. **Fastness to rubbing** (ISO) dry 4-5, wet 3-5. **Sound absorption** (EN ISO 354) 0.55/Class D (flat), 0.80/Class B (waved). **Airflow** 465 Pa s/m. **Flame resistance:** AS/NZS 1530.3. AS/NZS 3837 Class 2. ASTM E84 class A. BS 5852 Crib 5 with treatment. BS 5852 ignition source 3. BS 5852 part 1. EN 1021-1/2. GB 50222 B1 with treatment. IMO FTP Code 2010:Part 7 with treatment. IMO FTP Code 2010:Part 8. NF D 60 013. NFPA 260. SN 198 898 5.3 with treatment. UNI 9175 11M. US Cal. Bull. 117-2013. ÖNORM B1 / Q1. (Copy of test report available).

**Care** Please see the ISO symbols.

DE

**Anwendungsbereich** Büros, Hotels, Objectbereich, privaten Wohnbereich. Hohe Strapazierfähigkeit.

**Beschreibung** 90% Schurwolle, Kammgarn, 10% Nylon. Breite ca. 140 cm. Gewicht ca. 420 g/lfd.m. Materialgefärbt. Farbunterschiede können vorkommen.

**Webkant** ⇄

**Scheuerfestigkeit:** Ca. 100.000 Scheuerhübe gemäss der Martindale Methode EN ISO 12947. **Lichtechtheit** (ISO) 5-7. **Pilling** (EN ISO) 4. **Reibechtheit** (ISO) trocken 4-5, nass 3-5. **Schallabsorption** (EN ISO 354) 0.55/Class D (glatt), 0.80/Class B (gefaltet). **Airflow** 465 Pa s/m. **Flammschutz:** AS/NZS 1530.3. AS/NZS 3837 Class 2. ASTM E84 class A. BS 5852 Crib 5 mit Ausrüstung. BS 5852 ignition source 3. BS 5852 part 1. EN 1021-1/2. GB 50222 B1 mit Ausrüstung. IMO FTP Code 2010:Part 7 mit Ausrüstung. IMO FTP Code 2010:Part 8. NF D 60 013. NFPA 260. SN 198 898 5.3 mit Ausrüstung. UNI 9175 11M. US Cal. Bull. 117-2013. ÖNORM B1 / Q1. (Kopie von Prüfungsbericht verfügbar).

**Pflege** Siehe ISO Pflegesymbole.

NL

**Toepassing** Kantoren, hotels, instellingen, de privéfeer. Uitstekende slijtvastheid.

**Omschrijving** 90% scheerwol, kamgaren, 10% nylon. Breedte ca. 140 cm. Gewicht ca. 420 g/str. m. Materiaalgeverfd. Kleurverschillen kunnen optreden.

**Zelfkant** ⇄

**Slijtvastheid:** Ca. 100.000 toeren Martindale EN ISO 12947. **Lichtechtheid** (ISO) 5-7. **Pilling** (EN ISO) 4. **Wrijftechtheid** (ISO) droge 4-5, natte 3-5. **Geluidsabsorptie** (EN ISO 354) 0.55/Class D (vlak), 0.80/Class B (geplooid). **Airflow** 465 Pa s/m. **Brandwerendheid:** AS/NZS 1530.3. AS/NZS 3837 Class 2. ASTM E84 class A. BS 5852 Crib 5 met behandeling. BS 5852 ignition source 3. BS 5852 part 1. EN 1021-1/2. GB 50222 B1 with treatment. IMO FTP Code 2010:Part 7 met behandeling. IMO FTP Code 2010:Part 8. NF D 60 013. NFPA 260. SN 198 898 5.3 met behandeling. UNI 9175 11M. US Cal. Bull. 117-2013. ÖNORM B1 / Q1. (Op aanvraag sturen wij U graag een kopie van het testrapport toe).

**Onderhoud** Zie de ISO symbolen.

FR

**Domaine d'utilisation** Tissu d'ameublement pour aménagement privé et public. Grande résistance.

**Description** 90% laine vierge, peignée, 10% nylon. Largeur env. 140 cm. Poids env. 420 g/m lg. Teinture en bourre. Ecart des coloris possibles.

**Lisière** ⇄

**Résistance à l'abrasion:** Env. 100.000 révolutions selon le procédé Martindale EN ISO 12947. **Résistance à la lumière** (ISO) 5-7. **Boulochage** (EN ISO) 4. **Résistance au frottement** (ISO) sec 4-5, mouillé 3-5. **Absorption acoustique** (EN ISO 354) 0.55/Class D (à plat), 0.80/Class B (plié). **Airflow** 465 Pa s/m. **Normes au feu:** AS/NZS 1530.3. AS/NZS 3837 Class 2. ASTM E84 class A. BS 5852 Crib 5 avec traitement. BS 5852 ignition source 3. BS 5852 part 1. EN 1021-1/2. GB 50222 B1 avec traitement. IMO FTP Code 2010:Part 7 avec traitement. IMO FTP Code 2010:Part 8. NF D 60 013. NFPA 260. SN 198 898 5.3 avec traitement. UNI 9175 11M. US Cal. Bull. 117-2013. ÖNORM B1 / Q1. (La copie du compte rendu des tests est disponible sur demande).

**Entretien** Voir les symboles ISO.

IT

**Destinazione d'uso** Rivestimento per imbottiti casa e contract. Alta resistenza all'abrasione.

**Caratteristiche** 90% lana vergine, pettinata, 10% nylon. Altezza circa 140 cm. Peso circa 420 g/ml. Tinto in fiocco. Possibili differenze per colore.

**Cimosa** ⇄

**Abrasion:** Circa 100.000 cicli/metodo Martindale EN ISO 12947. **Resistenza alla luce** (ISO) 5-7. **Pilling** (EN ISO) 4. **Resistenza allo sfregamento** (ISO) condizione a secco 4-5, condizione umido 3-5. **Assorbimento acustico** (EN ISO 354) 0.55/Class D (tenda a pannello (tesa)), 0.80/Class B (tenda arricciata). **Airflow** 465 Pa s/m. **Ignifugazione:** AS/NZS 1530.3. AS/NZS 3837 Class 2. ASTM E84 class A. BS 5852 Crib 5 trattato ignifugo. BS 5852 ignition source 3. BS 5852 part 1. EN 1021-1/2. GB 50222 B1 trattato ignifugo. IMO FTP Code 2010:Part 7 trattato ignifugo. IMO FTP Code 2010:Part 8. NF D 60 013. NFPA 260. SN 198 898 5.3 trattato ignifugo. UNI 9175 11M. US Cal. Bull. 117-2013. ÖNORM B1 / Q1. (Disponibile copia del test).

**Manutenzione** Per favore seguire simboli ISO.

ES

**Aplicación** Adecuado, para el uso en oficinas, hoteles, instituciones y hogares. Gran resistencia al desgaste.

**Descripción** 90% lana virgen, peinada, 10% nilón. Anchura aprox. 140 cm. Peso aprox. 420 gr/ml. Teñido en material. Posibles variaciones de color.

**Filo** ⇄

**Resistencia al desgaste:** Aprox. 100.000 ciclos según el método Martindale EN ISO 12947. **Resistencia a la luz** (ISO) 5-7. **Relleno** (EN ISO) 4. **Solidez al frotamiento** (ISO) seco 4-5, mojado 3-5. **Absorción acústica** (EN ISO 354) 0.55/Class D (estor), 0.80/Class B (cortina). **Airflow** 465 Pa s/m. **Resistencia al fuego:** AS/NZS 1530.3. AS/NZS 3837 Class 2. ASTM E84 class A. BS 5852 Crib 5 con tratamiento. BS 5852 ignition source 3. BS 5852 part 1. EN 1021-1/2. GB 50222 B1 con tratamiento. IMO FTP Code 2010:Part 7 con tratamiento. IMO FTP Code 2010:Part 8. NF D 60 013. NFPA 260. SN 198 898 5.3 con tratamiento. UNI 9175 11M. US Cal. Bull. 117-2013. ÖNORM B1 / Q1. (Copia del informe de ensayos disponible).

**Limpeza** Consulte los símbolos ISO.

JP

**用途** オフィス、ホテル、各種施設、住宅インテリア。耐耗性大。

**詳細** 90% ニューウール ウーステッド、10% ナイロン。幅: 140 cm。重量: 1m あたり約 420 g。布染め。色彩ニュアンスに多少の違いが生じる可能性あり。

**耳、ふち** ⇄

**テスト:**

**磨耗:** マーチンデール法により摩擦約 100,000 回。EN ISO 12947. **色褪せ保証:** (ISO) 5-7. **ピリング** (EN ISO) 4. **摩擦保証:** (ISO) 乾燥状態 4-5、濡れた状態 3-5. **吸音率** (EN ISO 354) 0.55/Class D (パネル状)、0.80/Class B (ドレープ状). **気流:** 465 Pa s/m. **耐炎性:** AS/NZS 1530.3. AS/NZS 3837 Class 2. ASTM E84 class A. 特殊耐炎処理を行うことにより、BS 5852 Crib 5 に到達可能。BS 5852 ignition source 3. BS 5852 part 1. EN 1021-1/2. 特殊耐炎処理を行うことにより、GB 50222 B1 に到達可能。特殊耐炎処理を行うことにより、IMO FTP Code 2010:Part 7 に到達可能。IMO FTP Code 2010:Part 8. NF D 60 013. NFPA 260. 特殊耐炎処理を行うことにより、SN 198 898 5.3 に到達可能。UNI 9175 11M. US Cal. Bull. 117-2013. ÖNORM B1 / Q1. (テストレポートのコピー入手可能。)

**手入れ**

ISO シンボル参照。

CN

**适用范围** 办公室, 宾馆酒店, 公共设施, 居家使用。耐耗性大。

**成分** 90% 新羊毛, 精纺, 10% 尼龙。幅宽约 55 英寸 (140cm)。重量约 420 克/延米。原材料染色面料。颜色可能稍有色差。

**图纹方向** ⇄

**马丁代尔法** 约 100,000 转。EN ISO 12947. **光照色牢度** (ISO) 5-7. **起毛起球** (EN ISO) 4. **磨擦色牢度** (ISO) 干燥 4-5, 湿 3-5. **吸声系数** (EN ISO 354) 0.55/Class D (隔断帘), 0.80/Class B (一般窗帘使用). **气流阻力** 465 Pa s/m. **阻燃性:** AS/NZS 1530.3. AS/NZS 3837 Class 2. ASTM E84 class A. 特别耐火处理时 BS 5852 Crib 5 可以满足。BS 5852 ignition source 3. BS 5852 part 1. EN 1021-1/2. 特别耐火处理时 GB 50222 B1 可以满足。特别耐火处理时 IMO FTP Code 2010:Part 7 可以满足。IMO FTP Code 2010:Part 8. NF D 60 013. NFPA 260. 特别耐火处理时 SN 198 898 5.3 可以满足。UNI 9175 11M. US Cal. Bull. 117-2013. ÖNORM B1 / Q1. (可提供测试报告副本).

**维护** 请参照 ISO 标志。



10 year warranty



Quality and environmental system accreditation according to ISO 9001 and ISO 14001.

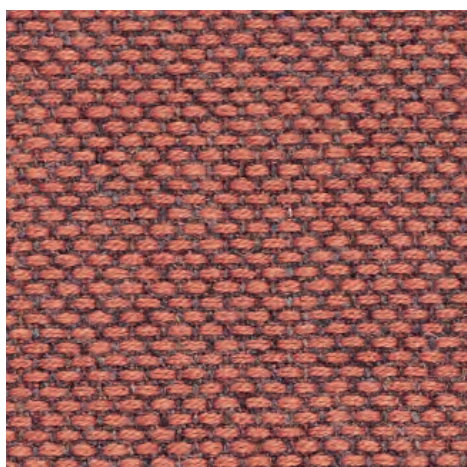
\*ACT® Registered Certification Marks

Encouraging the use of sustainable fibres. Durable and high quality. Hazardous substances restricted.

Contact and further information [www.kvadrat.dk](http://www.kvadrat.dk)

US contact info: 1-800-620-9309





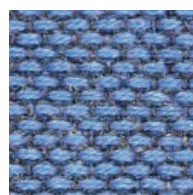
558



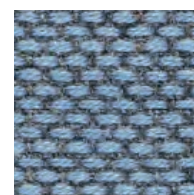
648



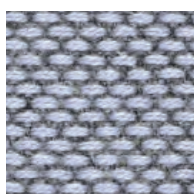
718



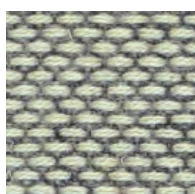
758



768



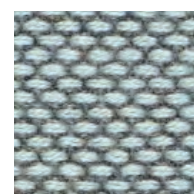
658



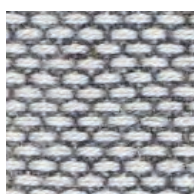
408



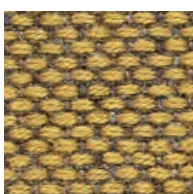
458



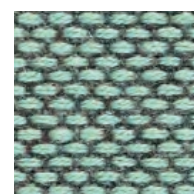
828



108



448



858



158



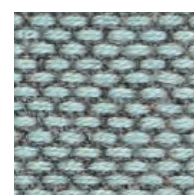
128



218



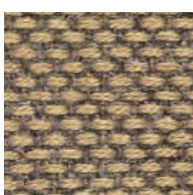
628



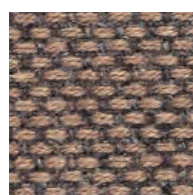
868



198



358



378



568

## Re-wool

Designed by Margrethe Odgaard

## DK

**Anvendelse** Kontorer, hoteller, institutioner, private indretninger. Stor slidstyrke.

**Beskrivelse** 45% recycled uld, 45% ny uld, kamgarn, 10% nylon. Bredde ca. 140 cm. Vægt ca. 540 g/lbm. Garnfarvet. Nuanceforskel vil forekomme.

## Ægkant ↔

**Slidstyrke:** Ca. 100.000 slidbevægelser efter Martindale metoden EN ISO 12947. **Lysægted** (ISO) 5-7. **Pilling** (EN ISO) 4. **Gnidægted** (ISO) tør 4-5, våd 4-5. **Lydborption** (EN ISO 354) 0.50/Class D (fladt), 0.75/Class C (foldet).

**Airflow** 258 Pa s/m. **Flammesikring:** AS/NZS 1530.3. AS/NZS 3837 Class 2. BS 5852 Crib 5 med flammesikring. BS 5852 ignition source 3. BS 5852 part 1. EN 1021-1/2. IMO FTP Code 2010:Part 8. NF D 60 013. SN 198 898 5.3 med flammesikring. UNI 9175 11M. US Cal. Bull. 117-2013. ÖNORM B1 / Q1. (Kopi af testrapport kan rekvireres).

**Vedligeholdelse** Se ISO symboler.

## UK/US

**Application** Offices, hotels, institutions, domestic use. Great durability.

**Description** 45% recycled wool, 45% new wool, worsted, 10% nylon. Width app. 55 inches (140 cm). Weight app. 17.3 oz/ly (540 g/lin.m). Yarn dyed. Colour differences will occur.

## Selvedge/Direction ↔

**Abrasion:** App. 100,000 rubs acc. to the Martindale method EN ISO 12947.

**Lightfastness** (ISO) 5-7. **Pilling** (EN ISO) 4.

**Fastness to rubbing** (ISO) dry 4-5, wet 4-5.

**Sound absorption** (EN ISO 354) 0.50/Class D (flat), 0.75/Class C (waved). **Airflow** 258 Pa s/m. **Flame resistance:** AS/NZS 1530.3. AS/NZS 3837 Class 2. BS 5852 Crib 5 with treatment.

BS 5852 ignition source 3. BS 5852 part 1. EN 1021-1/2. IMO FTP Code 2010:Part 8. NF D 60 013. SN 198 898 5.3 with treatment. UNI 9175 11M. US Cal. Bull. 117-2013. ÖNORM B1 / Q1. (Copy of test report available).

**Care** Please see the ISO symbols.

## DE

**Anwendungsbereich** Büros, Hotels, Objectbereich, privaten Wohnbereich, Hohe Strapazierfähigkeit.

**Beschreibung** 45% recycled Wolle, 45% Schurwolle, Kammgarn. 10% Nylon. Breite ca. 140 cm. Gewicht ca. 540 g/m. Garngefärbt. Farbunterschiede vorkommen.

## Webkant ↔

**Scheuerfestigkeit:** Ca. 100.000 Scheuerhübe nach der Martindale Methode EN ISO 12947.

**Lichtechtheit** (ISO) 5-7. **Pilling** (EN ISO) 4.

**Reibechtheit** (ISO) trocken 4-5, nass 4-5.

**Schallabsorption** (EN ISO 354) 0.50/Class D (glatt), 0.75/Class C (gefaltet). **Airflow** 258 Pa s/m. **Flammschutz:** AS/NZS 1530.3. AS/NZS 3837 Class 2. BS 5852 Crib 5 mit Ausrüstung. BS 5852 ignition source 3. BS 5852 part 1. EN 1021-1/2. IMO FTP Code 2010:Part 8. NF D 60 013. SN 198 898 5.3 mit Ausrüstung. UNI 9175 11M. US Cal. Bull. 117-2013. ÖNORM B1 / Q1. (Testbericht verfügbar).

**Pflege** Siehe ISO Pflegesymbole.

## NL

**Toepassing** Kantoren, hotels, instellingen, de privéfeer. Uitstekende slijtvastheid.

**Omschrijving** 45% gerecycled wool, 45% scheerwol, kamgaren, 10% nylon. Breedte ca. 140 cm. Gewicht ca. 540 gr/str. m. Garengerfvd. Kleurverschillen zullen optreden.

## Zelfkant ↔

**Slijtvastheid:** Ca. 100.000 toeren Martindale EN ISO 12947. **Lichtechtheid** (ISO) 5-7. **Pilling** (EN ISO) 4. **Wrijftechtheid** (ISO) droge 4-5, natte 4-5. **Geluidsabsorptie** (EN ISO 354) 0.50/Class D (vlak), 0.75/Class C (geplooid).

**Airflow** 258 Pa s/m. **Brandwerendheid:** AS/NZS 1530.3. AS/NZS 3837 Class 2. BS 5852 Crib 5 met behandeling. BS 5852 ignition source 3. BS 5852 part 1. EN 1021-1/2. IMO FTP Code 2010:Part 8. NF D 60 013. SN 198 898 5.3 met behandeling. UNI 9175 11M. US Cal. Bull. 117-2013. ÖNORM B1 / Q1. (Op aanvraag sturen wij u graag een kopie van het testrapport toe).

**Onderhoud** Zie de ISO symbolen.

## FR

**Domaine d'utilisation** Tissu d'ameublement pour aménagement privé et public. Grande résistance.

**Description** 45% laine recycle, 45% laine vierge, peigné, 10% nylon. Largeur env. 140 cm. Poids env. 540 g/m lg. Teinture sur fil. Des écarts de colori sont à prévoir.

## Lisière ↔

**Résistance à l'abrasion:** Env. 100.000 révolutions selon le procédé Martindale EN ISO 12947. **Résistance à la lumière** (ISO) 5-7.

**Boulochage** (EN ISO) 4. **Résistance au frottement** (ISO) sec 4-5, mouillé 4-5.

**Absorption acoustique** (EN ISO 354) 0.50/Class D (à plat), 0.75/Class C (plié).

**Airflow** 258 Pa s/m. **Normes au feu:** AS/NZS 1530.3. AS/NZS 3837 Class 2. BS 5852 Crib 5 avec traitement. BS 5852 ignition source 3. BS 5852 part 1. EN 1021-1/2. IMO FTP Code 2010:Part 8. NF D 60 013. SN 198 898 5.3 avec traitement. UNI 9175 11M. US Cal. Bull. 117-2013. ÖNORM B1 / Q1. (La copie du compte rendu des tests est disponible sur demande).

**Entretien** Voir les symboles ISO.

## IT

**Destinazione d'uso** Rivestimenti per imbottiti, casa e contract. Alta resistenza all'abrasione.

**Caratteristiche** 45% lana riciclato, 45% lana vergine, pettinata, 10% nylon. Altezza circa 140 cm. Peso circa 540 gr/mtl. Tinto in filo. Posso verificare differenze colore.

## Cimosa ↔

**Resistenza all'abrasione:** circa 100.000 cicli/metodo Martindale EN ISO 12947. **Resistenza alla luce** (ISO) 5-7. **Pilling** (EN ISO) 4.

**Resistenza allo sfregamento** (ISO) condizione a secco 4-5, condizione umido 4-5.

**Assorbimento acustico** (EN ISO 354) 0.50/Class D (tenda a pannello (tesa)), 0.75/Class C (tenda arricciata). **Airflow** 258 Pa s/m.

**Ignifugazione:** AS/NZS 1530.3. AS/NZS 3837 Class 2. BS 5852 Crib 5 trattato ignifugo. BS 5852 ignition source 3. BS 5852 part 1. EN 1021-1/2. IMO FTP Code 2010:Part 8. NF D 60 013. SN 198 898 5.3 trattato ignifugo. UNI 9175 11M. US Cal. Bull. 117-2013. ÖNORM B1 / Q1. (Disponibile copia del test).

**Manutenzione** Per favore seguire simboli ISO.

## ES

**Aplicación** Adecuado para el uso en oficinas, hoteles, instituciones y hogares. Gran resistencia al desgaste.

**Descripción** 45% lana reciclado, 45% lana virgen, peinada, 10% nilón. Anchura aprox. 140 cm. Peso aprox. 540 gr/ml. Hilo teñido. Existen diferencias de color.

## Filo ↔

**Resistencia al desgaste:** Aprox. 100.000 ciclos según el método Martindale EN ISO 12947.

**Resistencia a la luz** (ISO) 5-7. **Relleno** (EN ISO) 4.

**Solidez al frotamiento** (ISO) seco 4-5, mojado 4-5. **Absorción acústica** (EN ISO 354) 0.50/Class D (estor), 0.75/Class C (cortina).

**Airflow** 258 Pa s/m. **Resistencia al fuego:** AS/NZS 1530.3. AS/NZS 3837 Class 2. BS 5852 Crib 5 con tratamiento. BS 5852 ignition source 3. BS 5852 part 1. EN 1021-1/2. IMO FTP Code 2010:Part 8. NF D 60 013. SN 198 898 5.3 con tratamiento. UNI 9175 11M. US Cal. Bull. 117-2013. ÖNORM B1 / Q1. (Copia del informe de ensayos disponible).

**Limpieza** Consulte los símbolos ISO.

## JP

**用途** オフィス、ホテル、各種施設、住宅インテリア。耐耗性大。

**詳細** 45% リサイクルウール、45% ニューウール (梳毛糸)、10% ナイロン。幅:140cm。重量:1mあたり約540gr。糸染め。明色の場合、異質繊維が混在する場合あり。色味に多少の違いが生じることがございます。

## 耳、ふち、↔

## テスト

**磨耗:** マーチンデール法により摩擦運動約100,000回。EN ISO 12947. **色褪せ保証:** (ISO) 5-7. **ピリング** (EN ISO) 4. **摩擦保証:** (ISO) 乾燥状態 4-5、濡れた状態 4-5. **吸音率** (EN ISO 354) 0.50/Class D (パネル状)、0.75/Class C (ドレープ状). **気流:** 258 Pa s/m. **耐炎性:** AS/NZS 1530.3. AS/NZS 3837 Class 2. 特殊耐炎処理を行うことにより、BS 5852 Crib 5 に到達可能。BS 5852 ignition source 3. BS 5852 part 1. EN 1021-1/2. IMO FTP Code 2010:Part 8. NF D 60 013. 特殊耐炎処理を行うことにより、SN 198 898 5.3 に到達可能。UNI 9175 11M. US Cal. Bull. 117-2013. ÖNORM B1 / Q1. (テストレポートコピー入手可能。)

## 手入れ

ISO シンボル参照。

## CN

**适用范围** 办公室, 宾馆酒店, 公共设施, 居家使用。耐耗性大。

**成分** 45% 再生羊毛, 45% 精纺新羊毛, 10% 尼龙。幅宽约55英寸(140cm)。重量540克/延米, 纱染色面料。不同批次产品存在轻微色差。

## 织边方向 ↔

**马丁代尔法**约100,000转。EN ISO 12947. **光照色牢度** (ISO) 5-7. **起毛起球** (EN ISO) 4. **磨擦色牢度** (ISO) 干燥4-5, 湿4-5. **吸声系数** (EN ISO 354) 0.50/Class D (隔断帘), 0.75/Class C (一般窗帘使用)。 **气流阻力** 258 Pa s/m. **阻燃性:** AS/NZS 1530.3. AS/NZS 3837 Class 2. 特别耐火处理时 BS 5852 Crib 5 可以满足。BS 5852 ignition source 3. BS 5852 part 1. EN 1021-1/2. IMO FTP Code 2010:Part 8. NF D 60 013. 特别耐火处理时 SN 198 898 5.3 可以满足。UNI 9175 11M. US Cal. Bull. 117-2013. ÖNORM B1 / Q1. (可提供测试报告副本)。

**维护** 请参照ISO标志。



10 year warranty



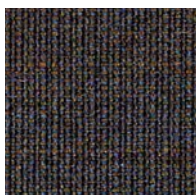
Quality and environmental system accreditation according to ISO 9001 and ISO 14001.

\*ACT® Registered Certification Marks

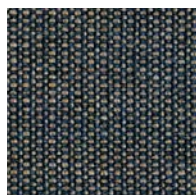
Encouraging the use of sustainable fibres. Durable and high quality. Hazardous substances restricted.

Contact and further information [www.kvadrat.dk](http://www.kvadrat.dk)

US contact info: 1-800-620-9309



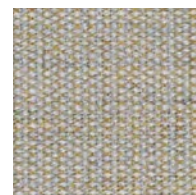
764



854



244



224



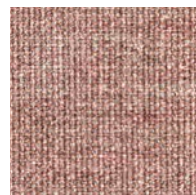
936



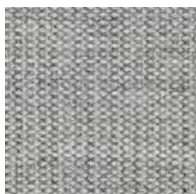
264



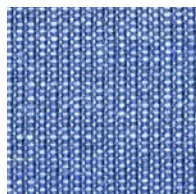
254



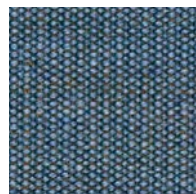
356



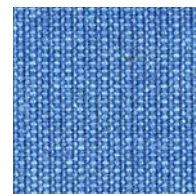
124



726



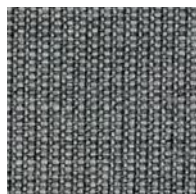
734



746



114



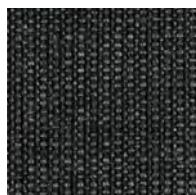
134



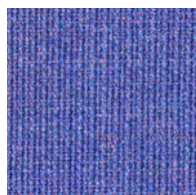
794



786



174



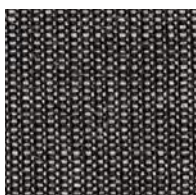
666



716



414



154



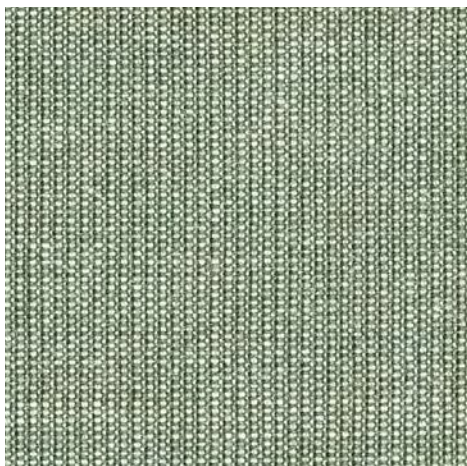
684



424



446



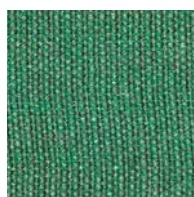
926



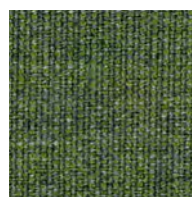
954



996



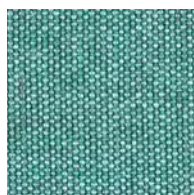
946



974



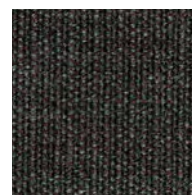
546



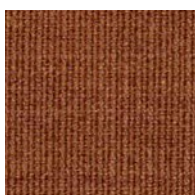
836



984



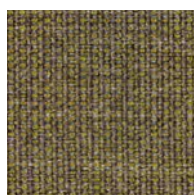
364



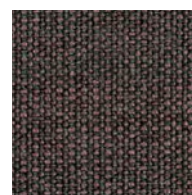
454



556



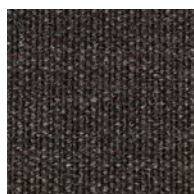
964



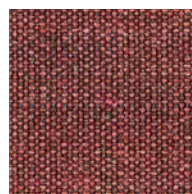
674



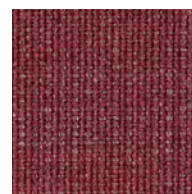
216



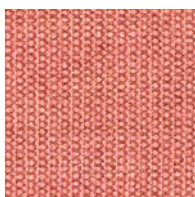
374



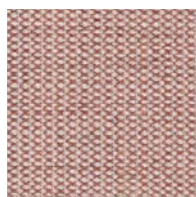
576



654



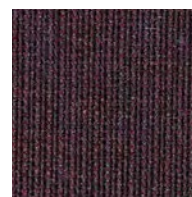
566



614



644



694

## Canvas 2

Designed by Giulio Ridolfo

## DK

**Anvendelse** Kontorer, hoteller, institutioner, private indretninger. Stor slidstyrke.

**Beskrivelse** 90% ny uld, kamgarn, 10% nylon. Bredde ca. 140 cm. Vægt ca. 480 g/lbm.

Materialefarvet. Nuanceforskel kan forekomme.

## Ægkant ⇄

**Slidstyrke:** Ca. 100.000 slidbevægelser efter Martindale metoden EN ISO 12947. **Lysægthed (ISO) 5-6. Pilling (EN ISO) 4. Gnidægthed (ISO) 4-5, våd 4-5. Lydabsorption (EN ISO 354) 0.60/Class C (fladt), 0.80/Class B (foldet).**

**Airflow** 849 Pa s/m. **Flammesikring:** AS/NZS 1530.3. BS 5852 Crib 5 med flammesikring. BS 5852 ignition source 3. BS 5852 Part 1. EN 1021-1/2. GB 50222 med flammesikring. IMO FTP Code 2010:Part 8. NF D 60 013. NFPA 260. SN 198 898 5.3 med flammesikring. UNI 9175 11M. US Cal. Bull. 117-2013. ÖNORM B1 / Q1.

(Kopi af testrapport kan rekvireres).

**Vedligeholdelse** Se ISO symboler.

## UK/US

**Application** Offices, hotels, institutions, domestic use. Great durability.

**Description** 90% new wool, worsted, 10% nylon. Width app. 55 inches (140 cm). Weight app. 15.4 oz/ly (480 g/lin.m). Material dyed. Colour differences may occur.

## Selvedge/Direction ⇄

**Abrasion:** App. 100,000 rubs acc. to the Martindale method EN ISO 12947.

**Lightfastness (ISO) 5-6. Pilling (EN ISO) 4.**

**Fastness to rubbing (ISO) dry 4-5, wet 4-5.**

**Sound absorption (EN ISO 354) 0.60/Class C (flat), 0.80/Class B (waved). Airflow** 849 Pa s/m. **Flame resistance:** AS/NZS 1530.3. BS 5852 Crib 5 with treatment. BS 5852 ignition source 3. BS 5852 Part 1. EN 1021-1/2. GB 50222 B1 with treatment. IMO FTP Code 2010:Part 8. NF D 60 013. NFPA 260. SN 198 898 5.3 with treatment. UNI 9175 11M. US Cal. Bull. 117-2013. ÖNORM B1 / Q1. (Copy of test report available).

**Care** Please see the ISO symbols.

## DE

**Anwendungsbereich** Büros, Hotels, Objektbereich, privater Wohnbereich. Hohe Strapazierfähigkeit.

**Beschreibung** 90% Schurwolle, Kammgarn, 10% Nylon. Breite ca. 140 cm. Gewicht ca. 480 g/m. Materialgefärbt. Farbunterschiede können vorkommen.

## Webkant ⇄

**Scheuerfestigkeit:** Ca. 100.000 Scheuerhübe nach der Martindale Methode EN ISO 12947.

**Lichtechtheit (ISO) 5-6. Pilling (EN ISO) 4.**

**Reibechtheit (ISO) trocken 4-5, nass 4-5.**

**Schallabsorption (EN ISO 354) 0.60/Class C (glatt), 0.80/Class B (gefaltet). Airflow** 849 Pa s/m. **Flammschutz:** AS/NZS 1530.3. BS 5852 Crib 5 mit Ausrüstung. BS 5852 ignition source 3. BS 5852 Part 1. EN 1021-1/2. GB 50222 mit Ausrüstung. IMO FTP Code 2010:Part 8. NF D 60 013. NFPA 260. SN 198 898 5.3 mit Ausrüstung. UNI 9175 11M. US Cal. Bull. 117-2013. ÖNORM B1 / Q1. (Testbericht verfügbar).

**Pflege** Siehe ISO Pflegesymbole.

## NL

**Toepassing** Kantoren, hotels, instellingen, de privéfeer. Uitstekende slijtvastheid.

**Omschrijving** 90% scheerwol, kamgaren, 10% nylon. Breedte ca. 140 cm. Gewicht ca. 480 gr/str. m. Materiaalgeverfd. Kleurverschillen kunnen optreden.

## Zelfkant ⇄

**Slijtvastheid:** Ca. 100.000 toeren Martindale EN ISO 12947. **Lichtechtheid (ISO) 5-6. Pilling (EN ISO) 4. Wrijftechtheid (ISO) droge 4-5, natte 4-5. Geluidsabsorptie (EN ISO 354) 0.60/Class C (vlak), 0.80/Class B (geplooid).**

**Airflow** 849 Pa s/m. **Brandwerendheid:** AS/NZS 1530.3. BS 5852 Crib 5 met behandeling. BS 5852 ignition source 3. BS 5852 Part 1. EN 1021-1/2. GB 50222 met behandeling. IMO FTP Code 2010:Part 8. NF D 60 013. NFPA 260. SN 198 898 5.3 met behandeling. UNI 9175 11M. US Cal. Bull. 117-2013. ÖNORM B1 / Q1. (Op aanvraag sturen wij u graag een kopie van het testrapport toe).

**Onderhoud** Zie de ISO symbolen.

## FR

**Domaine d'utilisation** Tissu d'ameublement pour aménagement privé et public. Grande résistance.

**Description** 90% laine vierge, peigné, 10% nylon. Largeur env. 140 cm. Poids env. 480 g/m lg. Teinture en bourre. Ecart de coloris possibles.

## Lisière ⇄

**Résistance à l'abrasion:** Env. 100.000 révolutions selon le procédé Martindale EN ISO 12947. **Résistance à la lumière (ISO) 5-6.**

**Boulochage (EN ISO) 4. Résistance au frottement (ISO) sec 4-5, mouillé 4-5.**

**Absorption acoustique (EN ISO 354) 0.60/Class C (à plat), 0.80/Class B (plié).**

**Airflow** 849 Pa s/m. **Normes au feu:** AS/NZS 1530.3. BS 5852 Crib 5 avec traitement. BS 5852 ignition source 3. BS 5852 Part 1. EN 1021-1/2. GB 50222 avec traitement. IMO FTP Code 2010:Part 8. NF D 60 013. NFPA 260. SN 198 898 5.3 avec traitement. UNI 9175 11M. US Cal. Bull. 117-2013. ÖNORM B1 / Q1. (La copie du compte rendu des tests est disponible sur demande).

**Entretien** Voir les symboles ISO.

## IT

**Destinazione d'uso** Rivestimento per imbottiti casa e contract. Alta resistenza all'abrasione.

**Caratteristiche** 90% lana vergine, pettinata, 10% nylon. Altezza circa 140 cm. Peso circa 480 gr/mtl. Tinto in fiocco. Possibili differenze per colore.

## Cimosa ⇄

**Abrasion:** Circa 100.000 cicli/metodo Martindale EN ISO 12947. **Resistenza alla luce (ISO) 5-6. Pilling (EN ISO) 4. Resistenza allo sfregamento (ISO) condizione a secco 4-5, condizione umido 4-5. Assorbimento acustico (EN ISO 354) 0.60/Class C (tenda a pannello (tesa)), 0.80/Class B (tenda arricciata).** **Airflow** 849 Pa s/m. **Ignifugazione:** AS/NZS 1530.3. BS 5852 Crib 5 trattato ignifugo. BS 5852 ignition source 3. BS 5852 Part 1. EN 1021-1/2. GB 50222 trattato ignifugo. IMO FTP Code 2010:Part 8. NF D 60 013. NFPA 260. SN 198 898 5.3 trattato ignifugo. UNI 9175 11M. US Cal. Bull. 117-2013. ÖNORM B1 / Q1. (Disponibile copia del test).

**Manutenzione** Per favore seguire simboli ISO.

## ES

**Aplicación** Oficinas, hoteles, instituciones, uso doméstico. Gran resistencia al desgaste.

**Descripción** 90% lana virgen, peinada, 10% nilón. Anchura aprox. 140 cm. Peso aprox. 480 gr/ml. Teñido en material. Posibles variaciones de color.

## Filo ⇄

**Resistencia al desgaste:** Aprox. 100.000 ciclos según el método Martindale EN ISO 12947.

**Resistencia a la luz (ISO) 5-6. Relleno (EN ISO) 4. Solidez al frotamiento (ISO) seco 4-5,**

**mojado 4-5. Absorción acústica (EN ISO 354) 0.60/Class C (estor), 0.80/Class B (cortina).**

**Airflow** 849 Pa s/m. **Resistencia al fuego:**

AS/NZS 1530.3. BS 5852 Crib 5 con tratamiento. BS 5852 ignition source 3. BS 5852 Part 1. EN 1021-1/2. GB 50222 con tratamiento. IMO FTP Code 2010:Part 8. NF D 60 013. NFPA 260. SN 198 898 5.3 con tratamiento. UNI 9175 11M. US Cal. Bull. 117-2013. ÖNORM B1 / Q1. (Copia del informe de ensayos disponible).

**Mantenimiento** Consulte los símbolos ISO.

## JP

**用途** オフィス、ホテル、各種施設、住宅インテリア。耐耗性大。

**詳細** 90% ニューウール、ウーステッド、10% ナイロン。幅：140 cm。重量：1mあたり約480 g。製品染め。色彩ニューアンスに多少の違いが生じる可能性あり。

## 耳、ふち、⇄

## テスト：

**磨耗：**マーチンデール法により摩擦運動約100.000回。EN ISO 12947。 **色あせ保障：**(ISO) 5-6。 **ピリング (EN ISO) 4. 摩擦保証：**(ISO) 乾燥状態4-5、濡れた状態4-5。 **吸音率 (EN ISO 354) 0.60/Class C (パネル状)、0.80/Class B (ドレープ状)。** **気流：**849 Pa s/m。 **耐炎性：**AS/NZS 1530.3。特殊耐炎処理を行うことにより、BS 5852 Crib 5 に到達可能。BS 5852 ignition source 3。BS 5852 Part 1。EN 1021-1/2。特殊耐炎処理を行うことにより、GB 50222 に到達可能。IMO FTP Code 2010:Part 8。NF D 60 013。NFPA 260。特殊耐炎処理を行うことにより、SN 198 898 5.3 に到達可能。UNI 9175 11M。US Cal. Bull. 117-2013。ÖNORM B1 / Q1。(テストレポートのコピー入手可能。)

## 手入れ

ISO シンボル参照。

## CN

**适用范围** 办公室、宾馆酒店、公共设施、居家使用。耐耗性大。

**成分** 90%新羊毛(精纺), 10%尼龙。幅宽约55英寸(140cm)。重量约480克/延米。原材料染色面料。颜色可能稍有色差。

## 图纹方向 ⇄

**马丁代尔法**约100,000转。EN ISO 12947。 **光照色牢度 (ISO) 5-6. 起毛起球 (EN ISO) 4. 磨擦色牢度 (ISO) 干燥4-5, 湿4-5. 吸声系数 (EN ISO 354) 0.60/Class C (隔断帘), 0.80/Class B (一般窗帘使用)。** **气流阻力** 849 Pa s/m。 **阻燃性:** AS/NZS 1530.3。特别耐火处理时BS 5852 Crib 5 可以满足。BS 5852 ignition source 3。BS 5852 Part 1。EN 1021-1/2。特别耐火处理时GB 50222 可以满足。IMO FTP Code 2010:Part 8。NF D 60 013。NFPA 260。特别耐火处理时SN 198 898 5.3 可以满足。UNI 9175, 11M。US Cal. Bull. 117-2013。ÖNORM B1 / Q1。(可提供测试报告副本)。

**维护** 请参照ISO标志。



10 year warranty



Quality and environmental system accreditation according to ISO 9001 and ISO 14001.

\*ACT® Registered Certification Marks

Encouraging the use of sustainable fibres. Durable and high quality. Hazardous substances restricted.

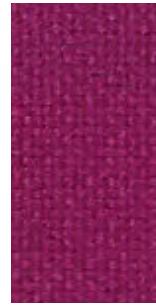
Contact and further information [www.kvadrat.dk](http://www.kvadrat.dk)

US contact info: 1-800-620-9309

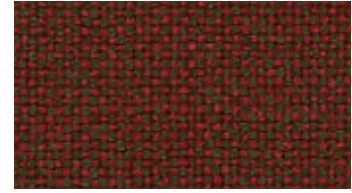
29



573



563



660



694



687



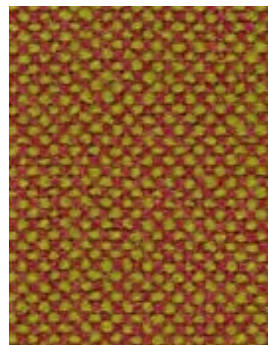
674



590



547



526



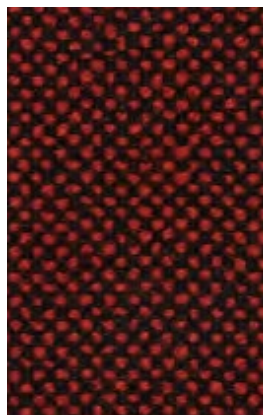
657



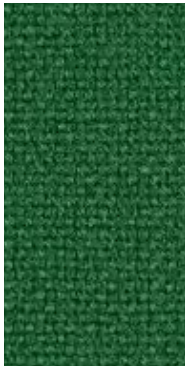
680



600



596



944



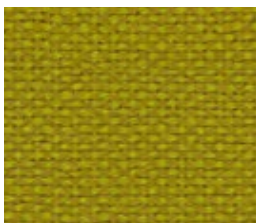
960



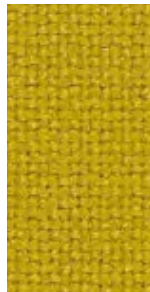
980



907



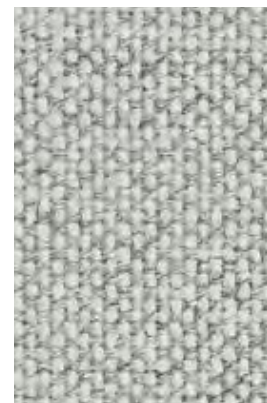
420



457



407



110



103



113



123



190



166



180



173



143



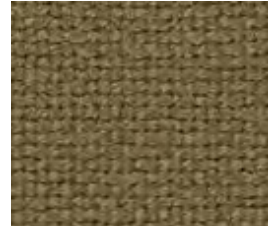
100



200



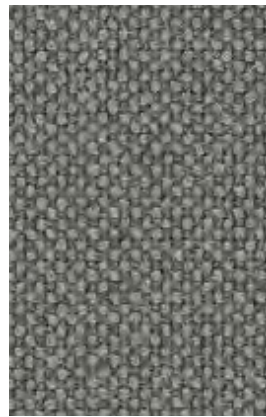
227



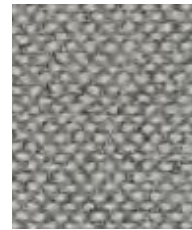
224



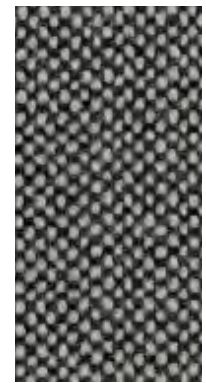
220



153



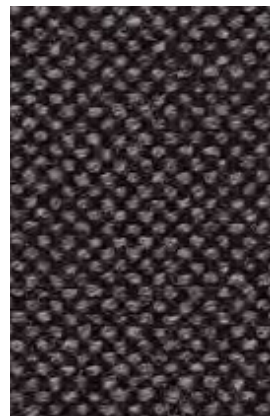
116



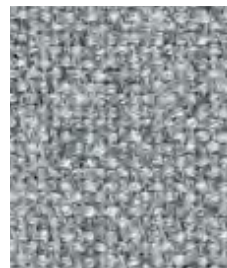
126



376



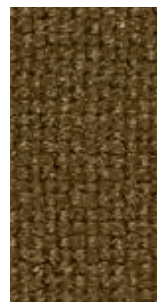
368



130



270



350

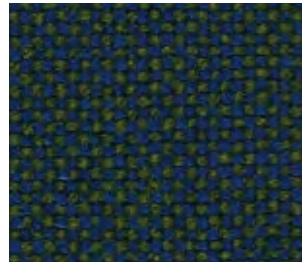


370

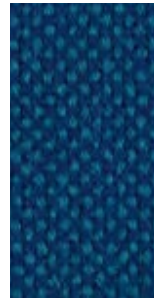


390

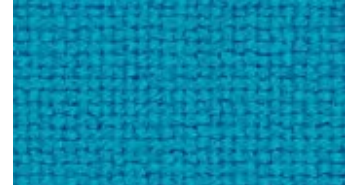




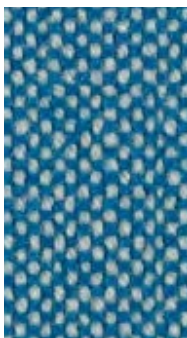
890



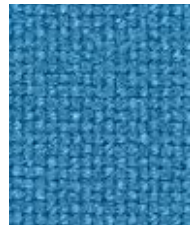
810



850



840



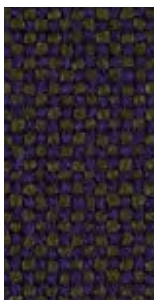
723



733



750



968



702



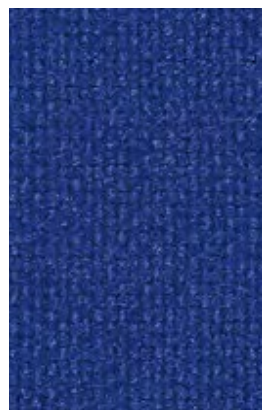
764



754



773



753



763

## Hallingdal 65

Designed by Nanna Ditzel

DK

**Anvendelse** Kontorer, hoteller, institutioner, private indretninger. Stor slidstyrke.

**Beskrivelse** 70% ny uld, 30% viskose. Bredde 130 cm. Vægt ca. 795 g/lbm. Materialefarvet. I lyse farver kan fremmede fibre forekomme.

Nuanceforskkel kan forekomme.

**Ægkant** ⇓

**Slidstyrke:** Ca. 100.000 slidbevægelser efter Martindale metoden EN ISO 12947. **Lysægthed** (ISO) 5-7. **Pilling** (EN ISO) 3-4. **Gnidægthed** (ISO) tør 4-5, våd 3-5. **Lydsabsorption** (EN ISO 354) 0.45/Class D (fladt), 0.70/Class C (foldet). **Airflow** 182 Pa s/m. **Flammesikring:** AS/NZS 1530.3. AS/NZS 3837 Class 2. BS 5852 Crib 5. BS 5852 part 1. EN 1021-1/2. GB 50222 B1 med flammesikring. IMO FTP Code 2010:Part 8. NF D 60 013. NFPA 260. SN 198 898 5.3 med flammesikring. UNI 9175 11M. US Cal. Bull. 117-2013. ÖNORM B1 / Q1. (Kopi af testrapport kan rekvireres).

**Vedligeholdelse** Se ISO symboler.

UK/US

**Application** Offices, hotels, institutions, domestic use. Great durability.

**Description** 70% new wool, 30% viscose. Width 51 inches (130 cm). Weight app. 25.5 oz/ly (795 g/lin.m). Material dyed. Foreign fibre may occur in light colours. Colour differences may occur.

**Selvedge/Direction** ⇓

**Abrasion:** App. 100.000 rubs acc. to the Martindale method EN ISO 12947. **Lightfastness** (ISO) 5-7. **Pilling** (EN ISO) 3-4. **Fastness to rubbing** (ISO) dry 4-5, wet 3-5. **Sound absorption** (EN ISO 354) 0.45/Class D (flat), 0.70/Class C (waved). **Airflow** 182 Pa s/m. **Flame resistance:** AS/NZS 1530.3. AS/NZS 3837 Class 2. BS 5852 Crib 5. BS 5852 part 1. EN 1021-1/2. GB 50222 B1 with treatment. IMO FTP Code 2010:Part 8. NF D 60 013. NFPA 260. SN 198 898 5.3 with treatment. UNI 9175 11M. US Cal. Bull. 117-2013. ÖNORM B1 / Q1. (Copy of test report available).

**Care** Please see the ISO symbols.

DE

**Anwendungsbereich** Büros, Hotels, Objectbereich, privaten Wohnbereich. Hohe Strapazierfähigkeit.

**Beschreibung** 70% Schurwolle, 30% Viskose. Breite 130 cm. Gewicht ca. 795 g/lfd.m. Materialgefärbt. In hellen Farben können Fremdfasern vorkommen. Farbunterschiede können vorkommen.

**Webkant** ⇓

**Scheuerfestigkeit:** Ca. 100.000 Scheuerhübe gemäss der Martindale Methode EN ISO 12947. **Lichtechtheit** (ISO) 5-7. **Pilling** (EN ISO) 3-4. **Reibechtheit** (ISO) trocken 4-5, nass 3-5. **Schallabsorption** (EN ISO 354) 0.45/Class D (glatt), 0.70/Class C (gefaltet). **Airflow** 182 Pa s/m. **Flammschutz:** AS/NZS 1530.3. AS/NZS 3837 Class 2. BS 5852 Crib 5. BS 5852 part 1. EN 1021-1/2. GB 50222 B1 mit Ausrüstung. IMO FTP Code 2010:Part 8. NF D 60 013. NFPA 260. SN 198 898 5.3 mit Ausrüstung. UNI 9175 11M. US Cal. Bull. 117-2013. ÖNORM B1 / Q1. (Kopie von Prüfungsbericht verfügbar).

**Pflege** Siehe ISO Pflegesymbole.

NL

**Toepassing** Kantoren, hotels, instellingen, de privéseer. Uitstekend slijtvastheid.

**Omschrijving** 70% scheerwol, 30% viskose. Breedte 130 cm. Gewicht ca. 795 g/str. m. Garengeverfd. Afwijkende vezels kunnen voorkomen in lichte kleuren. Kleurverschillen kunnen optreden.

**Zelfkant** ⇓

**Slijtvastheid:** Ca. 100.000 toeren Martindale EN ISO 12947. **Lichtechtheid** (ISO) 5-7. **Pilling** (EN ISO) 3-4. **Wrijftechtheid** (ISO) droge 4-5, natte 3-5. **Geluidsabsorptie** (EN ISO 354) 0.45/Class D (vlak), 0.70/Class C (geplooid). **Airflow** 182 Pa s/m. **Brandwerendheid:** AS/NZS 1530.3. AS/NZS 3837 Class 2. BS 5852 Crib 5. BS 5852 part 1. EN 1021-1/2. GB 50222 B1 met behandeling. IMO FTP Code 2010:Part 8. NF D 60 013. NFPA 260. SN 198 898 5.3 met behandeling. UNI 9175 11M. US Cal. Bull. 117-2013. ÖNORM B1 / Q1. (Op aanvraag sturen wij U graag een kopie van het testrapport toe).

**Onderhoud** Zie de ISO symbolen.

FR

**Domaine d'utilisation** Tissu d'ameublement pour aménagement privé et public. Grande résistance.

**Description** 70% laine vierge, 30% viscose. Largeur 130 cm. Poids env. 795 g/m lg. Teinture en bourre. Dans les couleurs claires, présence de fibres étrangères. Ecart de coloris possibles.

**Lisière** ⇓

**Résistance à l'abrasion:** Env. 100.000 révolutions selon le procédé Martindale EN ISO 12947. **Résistance à la lumière** (ISO) 5-7. **Boulochage** (ISO) 3-4. **Résistance au frottement** (ISO) sec 4-5, mouillé 3-5. **Absorption acoustique** (EN ISO 354) 0.45/Class D (à plat), 0.70/Class C (plié). **Airflow** 182 Pa s/m. **Normes au feu:** AS/NZS 1530.3. AS/NZS 3837 Class 2. BS 5852 Crib 5. BS 5852 part 1. EN 1021-1/2. GB 50222 B1 avec traitement. IMO FTP Code 2010:Part 8. NF D 60 013. NFPA 260. SN 198 898 5.3 avec traitement. UNI 9175 11M. US Cal. Bull. 117-2013. ÖNORM B1 / Q1. (La copie du compte rendu des tests est disponible sur demande).

**Entretien** Voir les symboles ISO

IT

**Destinazione d'uso** Rivestimento per imbottiti casa e contract. Alta resistenza all'abrasione. **Caratteristiche** 70% lana vergine, 30% viscosa. Altezza 130 cm. Peso circa 795 g/mtl. Tinto in fiocco. Nei colori chiari possono essere presenti fibre di tonalità scure. Possibili differenze per colore.

**Cimosa** ⇓

**Abrasion:** Circa 100.000 cicli/metodo Martindale EN ISO 12947. **Solidità alla luce** (ISO) 5-7. **Pilling** (EN ISO) 3-4. **Solidità alla sfregamento** (ISO). Condizione a secco 4-5. Condizione umido 3-5. **Assorbimento acustico** (EN ISO 354) 0.45/Class D (tenda a pannello (tesa)), 0.70/Class C (tenda arricciata). **Airflow** 182 Pa s/m. **Ignifugazione:** AS/NZS 1530.3. AS/NZS 3837 Class 2. BS 5852 Crib 5. BS 5852 part 1. EN 1021-1/2. GB 50222 B1 trattato ignifugo. IMO FTP Code 2010:Part 8. NF D 60 013. NFPA 260. SN 198 898 5.3 trattato ignifugo. UNI 9175 11M. US Cal. Bull. 117-2013. ÖNORM B1 / Q1. (Disponibile copia del test).

**Manutenzione** Per favore seguire simboli ISO.

ES

**Aplicación** Adecuado, para el uso en oficinas, hoteles, instituciones y hogares. Gran resistencia al desgaste.

**Descripción** 70% lana virgen, 30% viscosa. Anchura 130 cm. Peso aprox. 795 gr/ml. Teñido en material. En los colores claros puede haber fibras de otro color. Posibles variaciones de color.

**Filo** ⇓

**Resistencia al desgaste:** Aprox. 100.000 ciclos según el método Martindale EN ISO 12947. **Resistencia a la luz** (ISO) 5-7. **Relleno** (EN ISO) 3-4. **Solidez al frotamiento** (ISO) seco 4-5, mojado 3-5. **Absorción acústica** (EN ISO 354) 0.45/Class D (estor), 0.70/Class C (cortina). **Airflow** 182 Pa s/m. **Resistencia al fuego:** AS/NZS 1530.3. AS/NZS 3837 Class 2. BS 5852 Crib 5. BS 5852 part 1. EN 1021-1/2. GB 50222 B1 con tratamiento. IMO FTP Code 2010:Part 8. NF D 60 013. NFPA 260. SN 198 898 5.3 con tratamiento. UNI 9175 11M. US Cal. Bull. 117-2013. ÖNORM B1 / Q1. (Copia del informe de ensayos disponible).

**Mantenimiento** Consulte los símbolos ISO.

JP

**用途** オフィス、ホテル、各種施設、住宅インテリア。磨耗性大。

**詳細** 70% ピュアウール、30% ヴィスコース。幅: 130 cm。重量: 1mあたり約 795 g。布染め。明色の場合異質繊維が混在する場合あり。色彩ニュアンスに多少の違いが生じる可能性あり。

**耳、ふち、** ⇓

**テスト**

**磨耗:** マーチンデール法により摩擦運動約 100.000 回。EN ISO 12947. **色褪せ保証:** (ISO) 5-7. **ピリング** (EN ISO) 3-4. **摩擦保証:** (ISO) 乾燥状態 4-5、濡れた状態 3-5. **吸音率** (EN ISO 354) 0.45/Class D (パネル状)、0.70/Class C (ドレープ状). **気流:** 182 Pa s/m. **耐炎性:** AS/NZS 1530.3. AS/NZS 3837 Class 2. BS 5852 Crib 5. BS 5852 part 1. EN 1021-1/2. 特殊耐炎処理を行うことにより、GB 50222 B1 に到達可能。IMO FTP Code 2010:Part 8. NF D 60 013. NFPA 260. 特殊耐炎処理を行うことにより、SN 198 898 5.3 に到達可能。UNI 9175 11M. US Cal. Bull. 117-2013. ÖNORM B1 / Q1. (テストレポートのコピー入手可能。)

**手入れ**

ISO シンボル参照。

CN

**适用范围** 办公室、宾馆酒店、公共设施、居家使用。耐耗性大。

**成分** 70% 羊毛, 30% 纤维。幅宽 51 英寸 (130 cm)。面料重量约 795 克/延米。原料染色。浅色中可能含杂色纤维经微色差可能发生。

**图纹方向** ⇓

**马丁代尔法** 约 100,000 转。EN ISO 12947. **光照色牢度** (ISO) 5-7. **起毛起球** (EN ISO) 3-4. **磨擦色牢度** (ISO) 干燥 4-5, 湿 3-5. **吸声系数** (EN ISO 354) 0.45/Class D (隔断帘), 0.70/Class C (一般窗帘使用). **气流阻力** 182 Pa s/m. **阻燃性:** AS/NZS 1530.3. AS/NZS 3837 Class 2. BS 5852 Crib 5. BS 5852 part 1. EN 1021-1/2. 特别耐火处理时 GB 50222 B1 可以满足。IMO FTP Code 2010:Part 8. NF D 60 013. NFPA 260. 特别耐火处理时 SN 198 898 5.3 可以满足。UNI 9175 11M. US Cal. Bull. 117-2013. ÖNORM B1 / Q1. (可提供测试报告副本).

**维护** 请参照 ISO 标志。



10 year warranty



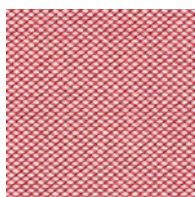
US contact info: 1-800-620-9309

Quality and environmental system accreditation according to ISO 9001 and ISO 14001.

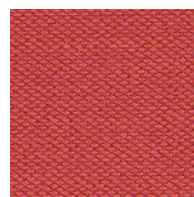
\*ACT® Registered Certification Marks

Encouraging the use of sustainable fibres. Durable and high quality. Hazardous substances restricted.

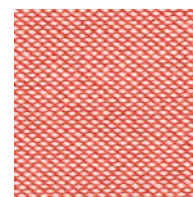
Contact and further information [www.kvadrat.dk](http://www.kvadrat.dk)



636



553



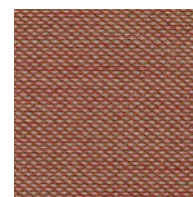
526



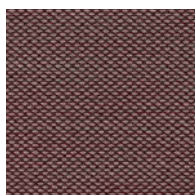
686



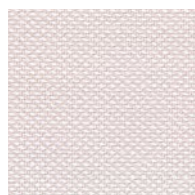
666



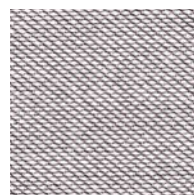
515



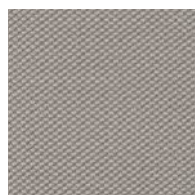
645



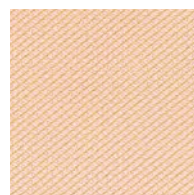
226



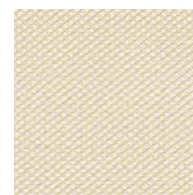
616



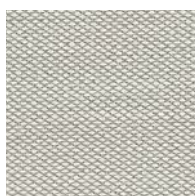
205



506



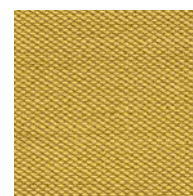
236



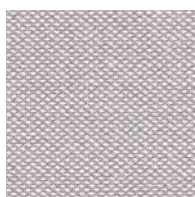
213



446



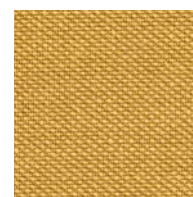
453



246



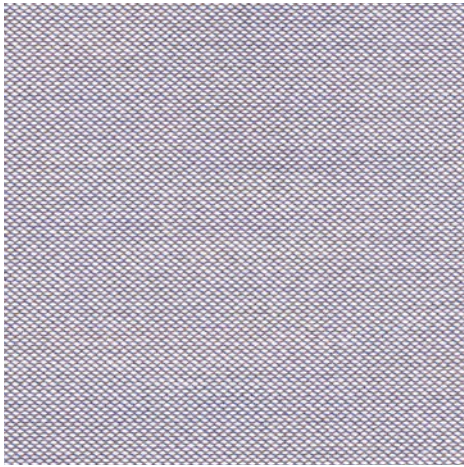
253



466

# STEELCUT TRIO 3

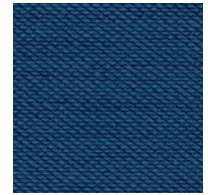
KVADRAT



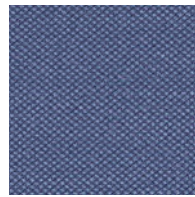
806



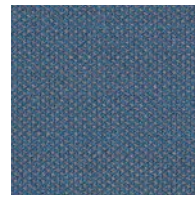
883



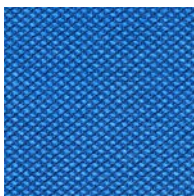
865



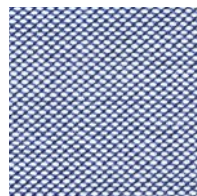
796



756



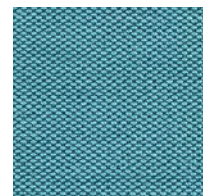
746



716



776



983



533



436



476



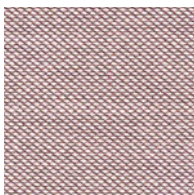
576



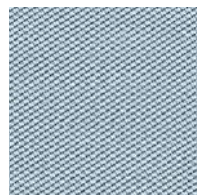
426



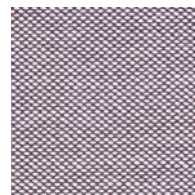
376



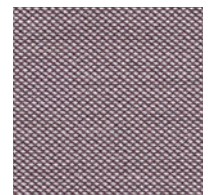
416



713



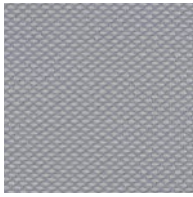
336



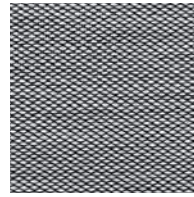
276

# STEELCUT TRIO 3

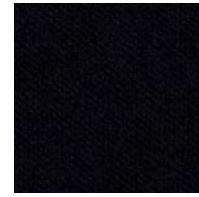
KVADRAT



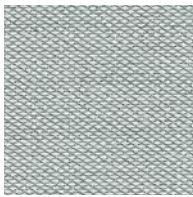
105



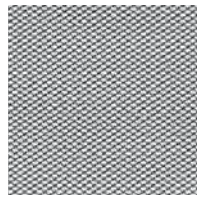
124



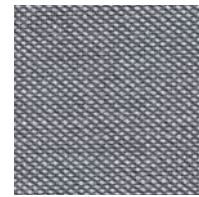
195



113



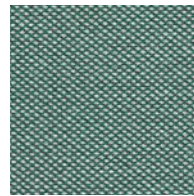
133



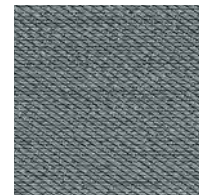
176



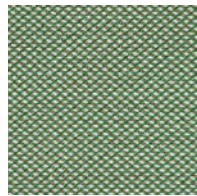
266



966



153



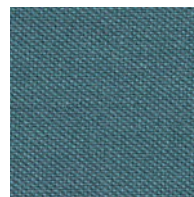
946



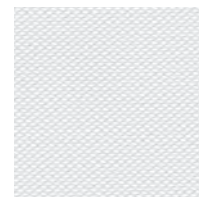
953



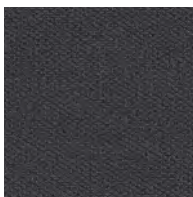
283



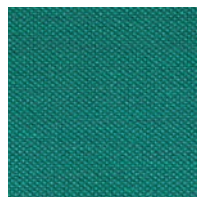
996



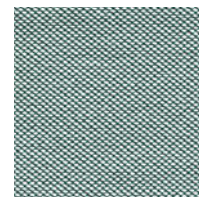
906



383



976



916

## Steelcut Trio 3

Designed by Frans Dijkmeijer and Giulio Ridolfo

## DK

**Anvendelse** Kontorer, hoteller, institutioner, private indretninger. Stor slidstyrke.

**Beskrivelse** 90% ny uld, kamgarn, 10% nylon. Bredder ca. 140 cm. Vægt ca. 770 g/lbm. Garnfarvet. Nuanceforskelle kan forekomme.

## Ægkant ↓

**Slidstyrke:** Ca. 100.000 slidbevægelser efter Martindale metoden EN ISO 12947. **Lysægtighed** (ISO) 5-7. **Pilling** (EN ISO) 4. **Gnidægtighed** (ISO) 4-5, våd 3-5. **Lydsorption** (EN ISO 354) 0.70/Class C (fladt), 0.95/Class A (foldet).

**Airflow** 910 Pa s/m. **Flammesikring:** AS/NZS 1530.3. AS/NZS 3837 Class 2. BS 5852 Crib 5 med flammesikring. BS 5852 ignition source 3. BS 5852 part 1. EN 1021-1/2. GB 50222 B1 med flammesikring. IMO FTP Code 2010:Part 8. NF D 60 013. NFPA 260. SN 198 898 5.3 med flammesikring. UNI 9175 11M. US Cal. Bull. 117-2013. ÖNORM B1 / Q1. (Kopi af testrapport kan rekvireres).

**Vedligeholdelse** Se ISO symboler.

## UK/US

**Application** Offices, hotels, institutions, domestic use. Great durability.

**Description** 90% new wool, worsted, 10% nylon. Width app. 55 inches (140 cm). Weight app. 24.7 oz/ly (770 g/lin.m.). Yarn dyed. Colour differences may occur.

## Selvedge/Direction ↓

**Abrasion:** App. 100,000 rubs acc. to the Martindale method EN ISO 12947. **Lightfastness** (ISO) 5-7. **Pilling** (EN ISO) 4. **Fastness to rubbing** (ISO) dry 4-5, wet 3-5. **Sound absorption** (EN ISO 354) 0.70/Class C (flat), 0.95/Class A (waved). **Airflow** 910 Pa s/m. **Flame resistance:** AS/NZS 1530.3. AS/NZS 3837 Class 2. BS 5852 Crib 5 with treatment. BS 5852 ignition source 3. BS 5852 part 1. EN 1021-1/2. GB 50222 B1 with treatment. IMO FTP Code 2010:Part 8. NF D 60 013. NFPA 260. SN 198 898 5.3 with treatment. UNI 9175 11M. US Cal. Bull. 117-2013. ÖNORM B1 / Q1. (Copy of test report available).

**Care** Please see the ISO symbols.

## DE

**Anwendungsbereich** Büros, Hotels, Objectbereich, privaten Wohnbereich, Hohe Strapazierfähigkeit.

**Beschreibung** 90% Schurwolle, Kammgarn. 10% Nylon. Breite ca. 140 cm. Gewicht ca. 770 g/m. Garngefärbt. Farbunterschiede können vorkommen.

## Webkant ↓

**Scheuerfestigkeit:** Ca. 100.000 Scheuerhübe nach der Martindale Methode EN ISO 12947. **Lichtechtheit** (ISO) 5-7. **Pilling** (EN ISO) 4. **Reibechtheit** (ISO) trocken 4-5, nass 3-5. **Schallabsorption** (EN ISO 354) 0.70/Class C (glatt), 0.95/Class A (gefaltet). **Airflow** 910 Pa s/m. **Flammschutz:** AS/NZS 1530.3. AS/NZS 3837 Class 2. BS 5852 Crib 5 mit Ausrüstung. BS 5852 ignition source 3. BS 5852 part 1. EN 1021-1/2. GB 50222 B1 mit Ausrüstung. IMO FTP Code 2010:Part 8. NF D 60 013. NFPA 260. SN 198 898 5.3 mit Ausrüstung. UNI 9175 11M. US Cal. Bull. 117-2013. ÖNORM B1 / Q1. (Testbericht verfügbar).

**Pflege** Siehe ISO Pflegesymbole.

## NL

**Toepassing** Kantoren, hotels, instellingen, de privésfeer. Uitstekende slijtvastheid.

**Omschrijving** 90% scheerwol, kamgaren, 10% nylon. Breedte ca. 140 cm. Gewicht ca. 770 gr/str. m. Garengerfvd. Kleurverschillen kunnen optreden.

## Zelfkant ↓

**Slijtvastheid:** Ca. 100.000 toeren Martindale EN ISO 12947. **Lichtechtheid** (ISO) 5-7. **Pilling** (EN ISO) 4. **Wrijftechtheid** (ISO) droge 4-5, natte 3-5. **Geluidsabsorptie** (EN ISO 354) 0.70/Class C (vlak), 0.95/Class A (geplooid). **Airflow** 910 Pa s/m. **Brandwerendheid:** AS/NZS 1530.3. AS/NZS 3837 Class 2. BS 5852 Crib 5 met behandeling. BS 5852 ignition source 3. BS 5852 part 1. EN 1021-1/2. GB 50222 B1 met behandeling. IMO FTP Code 2010:Part 8. NF D 60 013. NFPA 260. SN 198 898 5.3 met behandeling. UNI 9175 11M. US Cal. Bull. 117-2013. ÖNORM B1 / Q1. (Op aanvraag sturen wij u graag een kopie van het testrapport toe).

**Onderhoud** Zie de ISO symbolen.

## FR

**Domaine d'utilisation** Tissu d'ameublement pour aménagement privé et public. Grande résistance.

**Description** 90% laine vierge, peigné, 10% nylon. Largeur env. 140 cm. Poids env. 770 g/m lg. Teinture sur fil. Ecart de coloris possibles.

## Lisière ↓

**Résistance à l'abrasion:** Env. 100.000 révolutions selon le procédé Martindale EN ISO 12947. **Résistance à la lumière** (ISO) 5-7. **Boulochage** (EN ISO) 4. **Résistance au frottement** (ISO) sec 4-5, mouillé 3-5. **Absorption acoustique** (EN ISO 354) 0.70/Class C (à plat), 0.95/Class A (plié). **Airflow** 910 Pa s/m. **Normes au feu:** AS/NZS 1530.3. AS/NZS 3837 Class 2. BS 5852 Crib 5 avec traitement. BS 5852 ignition source 3. BS 5852 part 1. EN 1021-1/2. GB 50222 B1 avec traitement. IMO FTP Code 2010:Part 8. NF D 60 013. NFPA 260. SN 198 898 5.3 avec traitement. UNI 9175 11M. US Cal. Bull. 117-2013. ÖNORM B1 / Q1. (La copie du compte rendu des tests est disponible sur demande).

**Entretien** Voir les symboles ISO.

## IT

**Destinazione d'uso** Rivestimenti per imbottiti, casa e contract. Alta resistenza all'abrasione.

**Caratteristiche** 90% lana vergine, pettinata, 10% nylon. Altezza circa 140 cm. Peso circa 770 gr/mtl. Tinto in filo. Possibili differenze per colore.

## Cimosa ↓

**Resistenza all'abrasione:** circa 100.000 cicli/ metodo Martindale EN ISO 12947. **Resistenza alla luce** (ISO) 5-7. **Pilling** (EN ISO) 4. **Resistenza allo sfregamento** (ISO) condizione a secco 4-5, condizione umido 3-5. **Assorbimento acustico** (EN ISO 354) 0.70/Class C (tenda a pannello (tesa)), 0.95/Class A (tenda arricciata). **Airflow** 910 Pa s/m. **Ignifugazione:** AS/NZS 1530.3. AS/NZS 3837 Class 2. BS 5852 Crib 5 trattato ignifugo. BS 5852 ignition source 3. BS 5852 part 1. EN 1021-1/2. GB 50222 B1 trattato ignifugo. IMO FTP Code 2010:Part 8. NF D 60 013. NFPA 260. SN 198 898 5.3 trattato ignifugo. UNI 9175 11M. US Cal. Bull. 117-2013. ÖNORM B1 / Q1. (Disponibile copia del test).

**Manutenzione** Per favore seguire simboli ISO.

## ES

**Aplicación** Adecuada para el uso en oficinas, hoteles, instituciones y hogares. Gran resistencia al desgaste.

**Descripción** 90% lana virgen, peinada, 10% nilón. Anchura aprox. 140 cm. Peso aprox. 770 gr/ml. Hilo teñido. Posibles variaciones de color.

## Filo ↓

**Resistencia al desgaste:** Aprox. 100.000 ciclos según el método Martindale EN ISO 12947. **Resistencia a la luz** (ISO) 5-7. **Relleno** (EN ISO) 4. **Solidez al frotamiento** (ISO) seco 4-5, mojado 3-5. **Absorción acústica** (EN ISO 354) 0.70/Class C (estor), 0.95/Class A (cortina). **Airflow** 910 Pa s/m. **Resistencia al fuego:** AS/NZS 1530.3. AS/NZS 3837 Class 2. BS 5852 Crib 5 con tratamiento. BS 5852 ignition source 3. BS 5852 part 1. EN 1021-1/2. GB 50222 B1 con tratamiento. IMO FTP Code 2010:Part 8. NF D 60 013. NFPA 260. SN 198 898 5.3 con tratamiento. UNI 9175 11M. US Cal. Bull. 117-2013. ÖNORM B1 / Q1. (Copia del informe de ensayos disponible).

**Limpieza** Consulte los símbolos ISO.

## JP

**用途** オフィス、ホテル、各種施設、住宅インテリア。耐耗性大。

**詳細** 90% ニューウール。ウーステッド、10% ナイロン。幅:140cm。重量:1mあたり約770gr。糸染め。白色の場合、異質繊維が混在する場合あり。色彩ニューアンスに多少の違いが生じる可能性あり。

## 耳、ふち、↓

## テスト

**磨耗:** マーチンデール法により摩擦運動約100,000回。EN ISO 12947. **色褪せ保証:** (ISO) 5-7. **ピリング** (EN ISO) 4. **摩擦保証:** (ISO) 乾燥状態 4-5、濡れた状態 3-5. **吸音率** (EN ISO 354) 0.70/Class C (バネル状)、0.95/Class A (ドレープ状). **気流:** 910 Pa s/m. **耐火性:** AS/NZS 1530.3. AS/NZS 3837 Class 2. 特殊耐炎処理を行うことにより、BS 5852 Crib 5 に到達可能。BS 5852 ignition source 3. BS 5852 part 1. EN 1021-1/2. 特殊耐炎処理を行うことにより、GB 50222 B1 に到達可能。IMO FTP Code 2010:Part 8. NF D 60 013. NFPA 260. 特殊耐炎処理を行うことにより、SN 198 898 5.3 に到達可能。UNI 9175 11M. US Cal. Bull. 117-2013. ÖNORM B1 / Q1. (テストレポートコピー入手可能。)

## 手入れ

ISO シンボル参照。

## CN

**适用范围** 办公室, 宾馆酒店, 公共设施, 居家使用。耐耗性大。

**成分** 90%新羊毛, 精纺, 10%尼龙。幅宽约55英寸(140cm)。重量770克/延米, 纱染色面料。颜色可能稍有差异。

## 织边方向 ↓

**马丁代尔法** 约100,000转。EN ISO 12947. **光照色牢度** (ISO) 5-7. **起毛起球** (EN ISO) 4. **磨擦色牢度** (ISO) 干燥4-5, 湿3-5. **吸声系数** (EN ISO 354) 0.70/Class C (隔断帘), 0.95/Class A (一般窗帘使用)。 **气流阻力** 910 Pa s/m. **阻燃性:** AS/NZS 1530.3. AS/NZS 3837 Class 2. 特别耐火处理时BS 5852 Crib 5 可以满足。BS 5852 ignition source 3. BS 5852 part 1. EN 1021-1/2. 特别耐火处理时GB 50222 B1 可以满足。IMO FTP Code 2010:Part 8. NF D 60 013. NFPA 260. 特别耐火处理时SN 198 898 5.3 可以满足。UNI 9175 11M. US Cal. Bull. 117-2013. ÖNORM B1 / Q1. (可提供测试报告副本)。 **维护** 请参照ISO标志。



10 year warranty



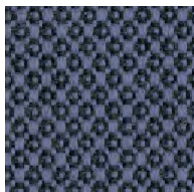
US contact info: 1-800-620-9309

Quality and environmental system accreditation according to ISO 9001 and ISO 14001.

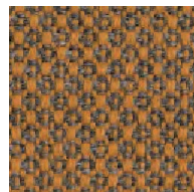
\*ACT® Registered Certification Marks

Encouraging the use of sustainable fibres. Durable and high quality. Hazardous substances restricted.

Contact and further information [www.kvadrat.cz](http://www.kvadrat.cz)



672



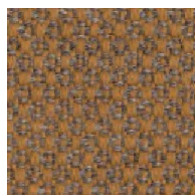
442



422



562



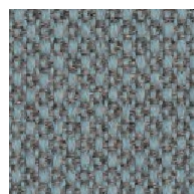
451



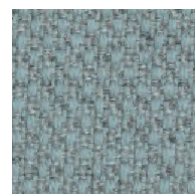
101



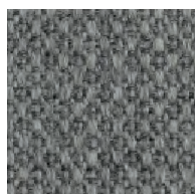
121



821



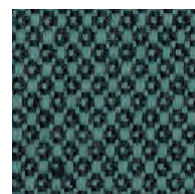
721



151



961



862



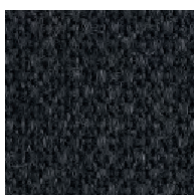
171



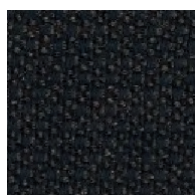
951



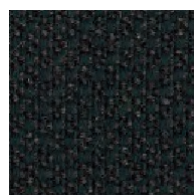
971



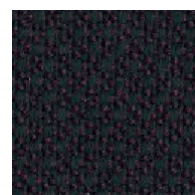
191



382

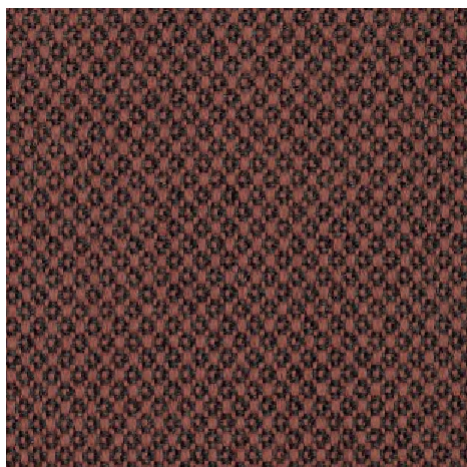


991



981

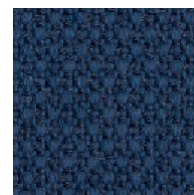
## Fiord 2



642



771



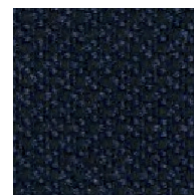
791



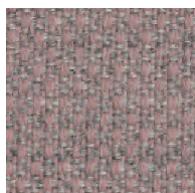
751



762



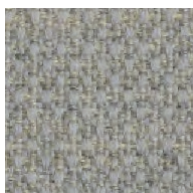
782



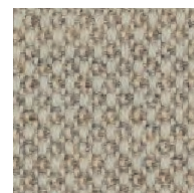
521



551



201



322



571



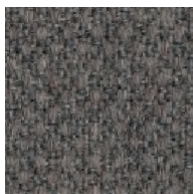
251



262



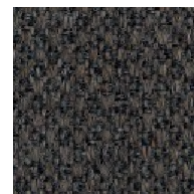
662



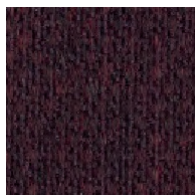
351



271



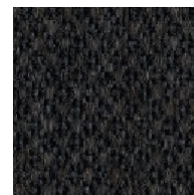
371



591



581



391



## Fiord 2

Designed by Louise Sigvardt &amp; Tone Barnung

## DK

**Anvendelse** Kontorer, hoteller, institutioner, private indretninger. Stor slidstyrke.

**Beskrivelse** 92% ny uld, kamgarn, 8% nylon. Bredde ca. 140 cm. Vægt ca. 500 g/lbm. Garnfarvet. Nuanceforskel kan forekomme.

**Ægkant** ↓

**Slidstyrke:** Ca. 60.000 slidbevægelser efter Martindale metoden EN ISO 12947. **Lysægthed** (ISO) 5-7. **Pilling** (EN ISO) 4-5. **Gnidægthed** (ISO) tør 3-5, våd 3-5. **Flammesikring:** AS/NZS 3837 Class 2. BS 5852 Crib 5 med flammesikring. BS 5852 part 1. EN 1021-1/2. GB 50222 B1 med flammesikring. IMO FTP Code 2010:Part 8. NF D 60 013. NFPA 260. SN 198 898 5.3 med flammesikring. UNI 9175 11M. US Cal. Bull. 117-2013. (Kopi af testrapport kan rekvireres).

**Vedligeholdelse** Se ISO symboler.

## UK/US

**Application** Offices, hotels, institutions, domestic use. Great durability.

**Description** 92% new wool, worsted, 8% nylon. Width app. 55 inches (140 cm). Weight app. 16.0 oz/ly (500 g/lin.m). Yarn dyed. Colour differences may occur.

**Selvedge/Direction** ↓

**Abrasion:** App. 60,000 rubs acc. to the Martindale method EN ISO 12947.

**Lightfastness** (ISO) 5-7. **Pilling** (EN ISO) 4-5.

**Fastness to rubbing** (ISO) dry 3-5, wet 3-5.

**Flame resistance:** AS/NZS 3837 Class 2. BS 5852 Crib 5 with treatment. BS 5852 part 1. EN 1021-1/2. GB 50222 B1 with treatment. IMO FTP Code 2010:Part 8. NF D 60 013. NFPA 260. SN 198 898 5.3 with treatment. UNI 9175 11M. US Cal. Bull. 117-2013. (Copy of test report available).

**Care** Please see the ISO symbols.

## DE

**Anwendungsbereich** Büros, Hotels, Objectbereich, privaten Wohnbereich, Hohe Strapazierfähigkeit.

**Beschreibung** 92% Schurwolle, Kammgarn. 8% Nylon. Breite ca. 140 cm. Gewicht ca. 500 g/m. Garngefärbt. Farbunterschiede können vorkommen.

**Webkant** ↓

**Scheuerfestigkeit:** Ca. 60.000 Scheuerhübe nach der Martindale Methode EN ISO 12947.

**Lichtechtheit** (ISO) 5-7. **Pilling** (EN ISO) 4-5.

**Reibechtheit** (ISO) trocken 3-5, nass 3-5.

**Flammschutz:** AS/NZS 3837 Class 2. BS 5852 Crib 5 mit Ausrüstung. BS 5852 part 1. EN 1021-1/2. GB 50222 B1 mit Ausrüstung. IMO FTP Code 2010:Part 8. NF D 60 013. NFPA 260. SN 198 898 5.3 mit Ausrüstung. UNI 9175 11M. US Cal. Bull. 117-2013. (Testbericht verfügbar).

**Pflege** Siehe ISO Pflegesymbole.

## NL

**Toepassing** Kantoren, hotels, instellingen, de privésector. Uitstekende slijtvastheid.

**Omschrijving** 92% scheerwol, kamgaren, 8% nylon. Breedte ca. 140 cm. Gewicht ca. 500 gr/str. m. Gareengeverfd. Kleurverschillen kunnen optreden.

**Zelfkant** ↓

**Slijtvastheid:** Ca. 60.000 toeren Martindale EN ISO 12947. **Lichtechtheid** (ISO) 5-7. **Pilling** (EN ISO) 4-5. **Wrijftechtheid** (ISO) droge 3-5, natte 3-5. **Brandwerendheid:** AS/NZS 3837 Class 2. BS 5852 Crib 5 met behandeling. BS 5852 part 1. EN 1021-1/2. GB 50222 B1 met behandeling. IMO FTP Code 2010:Part 8. NF D 60 013. NFPA 260. SN 198 898 5.3 met behandeling. UNI 9175 11M. US Cal. Bull. 117-2013. (Op aanvraag sturen wij u graag een kopie van het testrapport toe).

**Onderhoud** Zie de ISO symbolen.

## FR

**Domaine d'utilisation** Tissu d'ameublement pour aménagement privé et public. Grande résistance.

**Description** 92% laine vierge, peigné, 8% nylon. Largeur env. 140 cm. Poids env. 500 g/m lg. Teinture sur fil. Ecart de coloris possibles.

**Lisière** ↓

**Résistance à l'abrasion:** Env. 60.000 révolutions selon le procédé Martindale EN ISO 12947. **Résistance à la lumière** (ISO) 5-7.

**Boulochage** (EN ISO) 4-5. **Résistance au frottement** (ISO) sec 3-5, mouillé 3-5. **Normes au feu:** AS/NZS 3837 Class 2. BS 5852 Crib 5 avec traitement. BS 5852 part 1. EN 1021-1/2. GB 50222 B1 avec traitement. IMO FTP Code 2010:Part 8. NF D 60 013. NFPA 260. SN 198 898 5.3 avec traitement. UNI 9175 11M. US Cal. Bull. 117-2013. (La copie du compte rendu des tests est disponible sur demande).

**Entretien** Voir les symboles ISO.

## IT

**Destinazione d'uso** Rivestimenti per imbottiti, casa e contract. Alta resistenza all'abrasione.

**Caratteristiche** 92% lana vergine, pettinata, 8% nylon. Altezza circa 140 cm. Peso circa 500 gr/mtl. Tinto in filo. Possibili differenze per colore.

**Cimosa** ↓

**Resistenza all'abrasione:** circa 60.000 cicli/metodo Martindale EN ISO 12947. **Resistenza alla luce** (ISO) 5-7. **Pilling** (EN ISO) 4-5. **Resistenza allo sfregamento** (ISO) condizione a secco 3-5, condizione umido 3-5.

**Ignifugazione:** AS/NZS 3837 Class 2. BS 5852 Crib 5 trattato ignifugo. BS 5852 part 1. EN 1021-1/2. GB 50222 B1 trattato ignifugo. IMO FTP Code 2010:Part 8. NF D 60 013. NFPA 260. SN 198 898 5.3 trattato ignifugo. UNI 9175 11M. US Cal. Bull. 117-2013. (Disponibile copia del test).

**Manutenzione** Per favore seguire simboli ISO.

## ES

**Aplicación** Adecuado para el uso en oficinas, hoteles, instituciones y hogares. Gran resistencia al desgaste.

**Descripción** 92% lana virgen, peinada, 8% nilón. Anchura aprox. 140 cm. Peso aprox. 500 gr/ml. Hilo teñido. Posibles variaciones de color.

**Filo** ↓

**Resistencia al desgaste:** Aprox. 60.000 ciclos según el método Martindale EN ISO 12947.

**Resistencia a la luz** (ISO) 5-7. **Relleno** (EN ISO) 4-5.

**Solidez al frotamiento** (ISO) seco 3-5, mojado 3-5. **Resistencia al fuego:** AS/NZS 3837 Class 2. BS 5852 Crib 5 con tratamiento. BS 5852 part 1. EN 1021-1/2. GB 50222 B1 con tratamiento. IMO FTP Code 2010:Part 8. NF D 60 013. NFPA 260. SN 198 898 5.3 con tratamiento. UNI 9175 11M. US Cal. Bull. 117-2013. (Copia del informe de ensayos disponible).

**Limpieza** Consulte los símbolos ISO.

## JP

**用途** オフィス、ホテル、各種施設、住宅インテリア。耐耗性大。

**詳細** 92% ニューウール。ウーステッド、8% ナイロン。幅：140cm。重量：1mあたり約500gr。糸染め。明色の場合、異質繊維が混入する場合があります。色彩ニューアンスに多少の違いが生じる可能性あり。

**耳、ふち、** ↓**テスト**

**磨耗：**マーチンデール法により摩擦運動約60,000回。EN ISO 12947。 **色褪せ保証：**(ISO) 5-7。 **ピリング**(EN ISO) 4-5。 **摩擦保証：**(ISO) 乾燥状態 3-5、濡れた状態 3-5。 **耐炎性：**AS/NZS 3837 Class 2。特殊耐炎処理を行うことにより、BS 5852 Crib 5 に到達可能。BS 5852 part 1。EN 1021-1/2。特殊耐炎処理を行うことにより、GB 50222 B1 に到達可能。IMO FTP Code 2010:Part 8。NF D 60 013。NFPA 260。特殊耐炎処理を行うことにより、SN 198 898 5.3 に到達可能。UNI 9175 11M。US Cal. Bull. 117-2013。(テストレポートコピー入手可能。)

**手入れ**

ISO シンボル参照。

## CN

**适用范围** 办公室, 宾馆酒店, 公共设施, 居家使用。耐耗性大。

**成分** 92%新羊毛, 精纺, 8%尼龙。幅宽约55英寸(140 cm)。重量500克/延米, 纱染色面料。颜色可能稍有色差。

**织边方向** ↓

**马丁代尔法**约60,000转。EN ISO 12947。 **光照色牢度** (ISO) 5-7。 **起毛起球** (EN ISO) 4-5。 **摩擦色牢度** (ISO) 干燥3-5, 湿3-5。 **阻燃性:** AS/NZS 3837 Class 2。特别耐火处理时BS 5852 Crib 5 可以满足。BS 5852 part 1。EN 1021-1/2。特别耐火处理时GB 50222 B1 可以满足。IMO FTP Code 2010:Part 8。NF D 60 013。NFPA 260。特别耐火处理时SN 198 898 5.3 可以满足。UNI 9175 11M。US Cal. Bull. 117-2013。(可提供测试报告副本)。

**维护** 请参照ISO标志。



10 year warranty



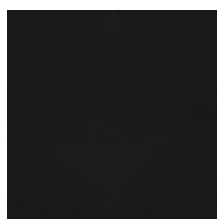
Quality and environmental system accreditation according to ISO 9001 and ISO 14001.

\*ACT® Registered Certification Marks

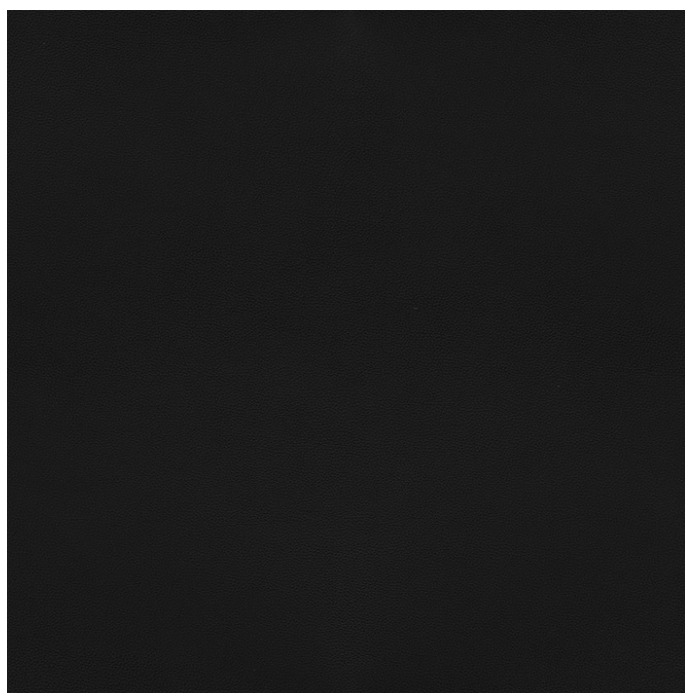
Encouraging the use of sustainable fibres. Durable and high quality. Hazardous substances restricted.

Contact and further information [www.kvadrat.dk](http://www.kvadrat.dk)

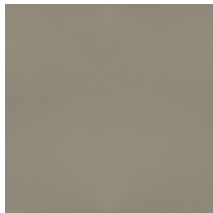
US contact info: 1-800-620-9309



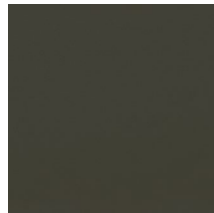
Black 41599



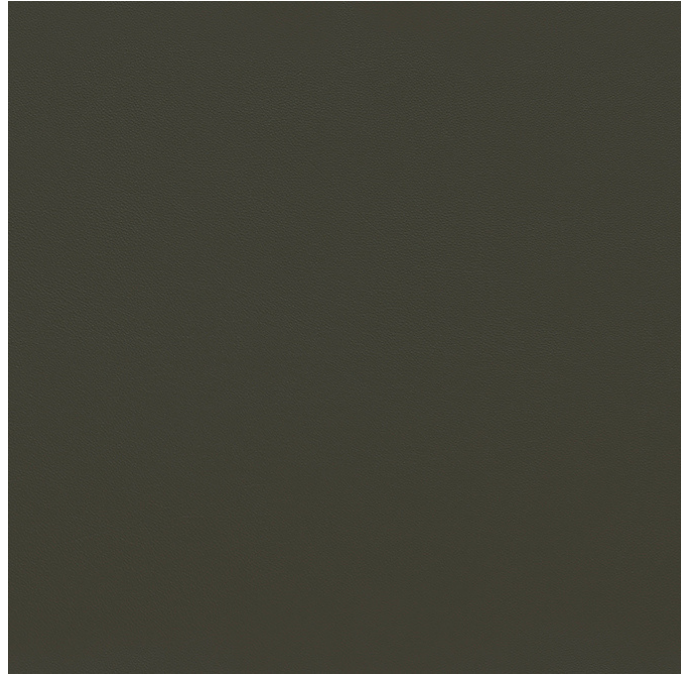
Black 41599



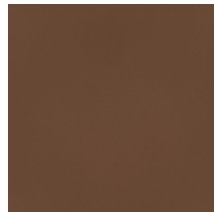
Mineral 30160



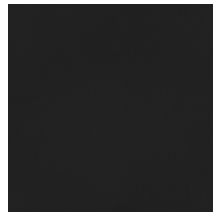
Autumn 30099



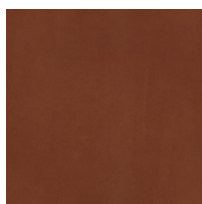
Autumn 30099



Cognac 30107



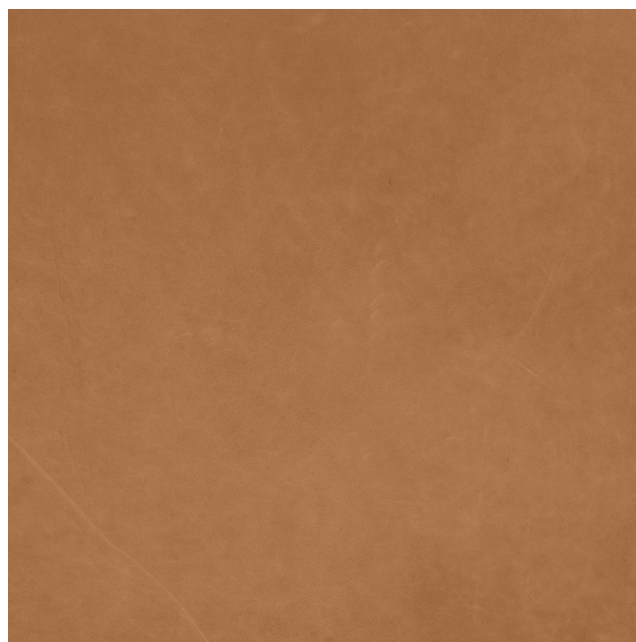
Black 31320



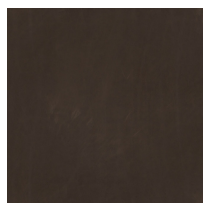
Rust 21002



Cognac 21000



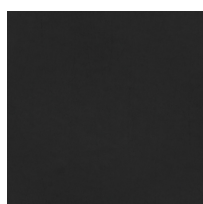
Camel 21004



Dark Brown 21001



Camel 21004



Anthrazite 21003

## ULTRA

**Type** Protected leather

**Origin** Non European

**Surface** Very strong and durable with a uniform, matt surface print

**Finish** Extremely strong surface protection

**Tannage** Chrome

**Dye** Water-based aniline dye



# SØRENSEN

		Requirements	Our test
Colour fastness to light:	DIN EN ISO 105-B02	≥5	6-7
Colour fastness to rubbing*:	DIN EN ISO 11640		
	Dry 500 rubs	≥4	4-5
	Wet 250 rubs	≥3-4	4
	Perspiration 80 rubs	≥3-4	4

## SPECTRUM/NOIR

**Type** Semi-aniline leather

**Origin** European rawhide, typically from Italy, Germany, Austria, Switzerland and Scandinavia

**Surface** Matt, soft with a slight texture

**Finish** Light surface protection

**Tannage** Chrome

**Dye** Water-based aniline dye

		Requirements	Our test
Colour fastness to light:	DIN EN ISO 105-B02	≥4	≥6
Colour fastness to rubbing*:	DIN EN ISO 11640		
	Dry 500 rubs	≥4	4
	Wet 80 rubs	≥3-4	4-5
	Perspiration 50 rubs	≥3-4	4

## DUNES®

**Type** Aniline leather

**Origin** European rawhide, typically from Italy, Germany, Austria, Switzerland and Scandinavia

**Surface** An elegant, matt surface with a somewhat velvety look and feel

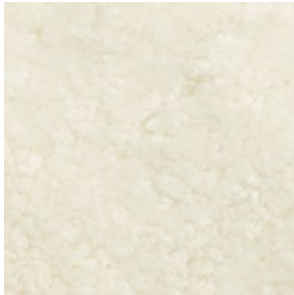
**Finish** Special leather oil to enhance the body

**Tannage** Chrome-free

**Dye** Water-based aniline dye



		Requirements	Our test
Colour fastness to light:	DIN EN ISO 105-B02	≥3	3
Colour fastness to rubbing*:	DIN EN ISO 11640		
	Dry 50 rubs	≥3	4
	Wet 20 rubs	≥3	3-4
	Perspiration 20 rubs	≥3	3-4



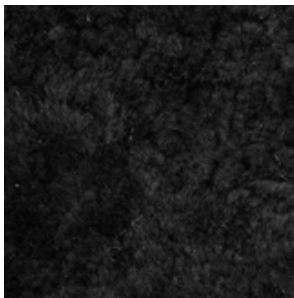
02 OFF WHITE



09 MOONLIGHT



08 HONEY



01 BLACK



04 ANTHRACITE



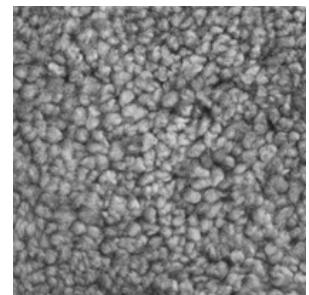
14 CHARCOAL



15 ESPRESSO



07 SAHARA



22 SCANDINAVIAN GREY

## Material fact sheet



### SKANDILOCK CURLY 17mm

Art.No 1111001-

Skandilock Curly 17mm is developed for furniture upholstery but can also be used for different furnishing assignments. The wool has a curly texture and is high in density which makes it durable and soft.

Curly 17mm comes in three color collections. In the Classic Collection, the wool has been dyed with highlighted tips and darker base which gives the overall appearance a beautiful marbled finish. In the Standard Collection the wool is dyed in one color tone which gives an even end result that enhances the curly texture of the wool. Limited Collection are colors that varies in stock and therefore the lead times can be longer when ordered in larger quantities.

#### Origin raw material

Australian Crossbred, Lamb/Sheep

#### Leather

Thickness: 1-3mm

#### Wool

Length: 17 mm

Curly character

High density

#### Tanning process

Offwhite - Synthetic tanned, chrome-free

Remaining colors - Synthetic tanned/Crom III

#### Color fastness to artificial light

(ISO 105-B02:2014)

Classic collection:	>5
Standard collection:	>5
Limited collection:	>5
Off-White (non-dyed):	4-5
Ruby:	4-5
Moonlight:	3-4

#### Color fastness to rubbing

(DIN EN ISO 105-X12:2016)

Dry: 4-5                      Wet: 3-4

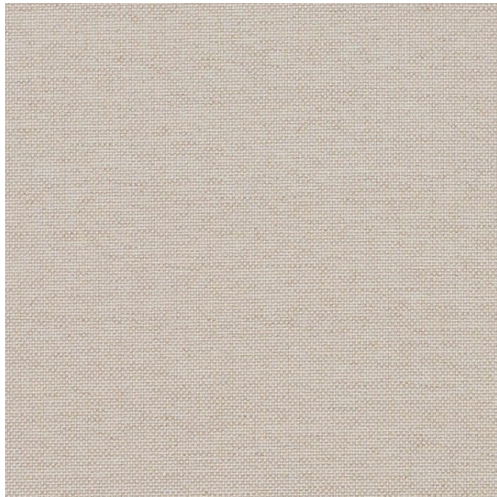
#### Fire safety

Tested and approved in accordance with:

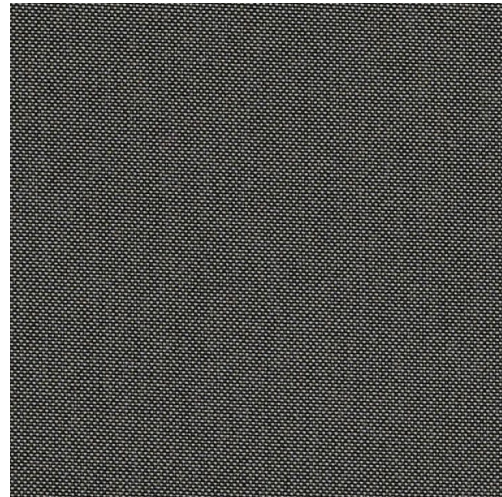
EN1021-1, EN1021-21, CAL. TB117 (US) , FAR §23.853 (AUS)

#### Washability

30 degrees Celsius. No bleaching/No ironing



Chalk



Dark Taupe



# NATTE

## Technical sheet



CHARACTERISTICS	VALUES		UNITS	STANDARDS
	WARP	WEFT		

### GENERAL CHARACTERISTICS

Composition	100% Sunbrella Acrylic		
Backing / Finish	Water-repellent & Stain-proof		
Weave	Braided 3/2		ISO 7211-1
Weight	275	g/m <sup>2</sup>	ISO 3801
Width	140	cm	EN 1773
Roll length	50	m	

### FABRIC RESISTANCE

Tensile strength	180	100	daN/5cm	ISO 13934-1
Elongation at break	24	28	%	ISO 13934-1
Pilling	4/5		Class / 5	ISO 12945-2
Spray test	5		Class / 5	ISO 4920
Oil-resistance properties	5		Class / 8	ISO 14419
Seam slippage (180 N)	<3	<5	mm	ISO 13936-2
Stitching strength	39.6	43	daN	ISO 13935-2
Stability on 40 deg. C washing	±1	±1	%	ISO 5077

### COLOUR-FASTNESS

Colour fastness UV - outdoor - 1000h	4/5		Class / 5	ISO 105 B04
Colour fastness UV - indoor	8		Class / 8	ISO 105 B02
Colour fastness under dry friction	5		Class / 5	ISO 105X12
Colour fastness under wet friction	5		Class / 5	ISO 105X12
Colour fastness 40°C washing	5		Class / 5	ISO 105 C06

### FIRE RESISTANCE

California Technical Bulletin 117-203	Section 1
NFPA 260	Classe I
NF EN 1021-1	Non-Ignition

### USES

Guarantee	5	years
Recommended Uses	seating,cushions, curtains	

### CARE



This product's values may vary with a tolerance of ± 5%

Dickson-Constant SAS, [French limited-liability corporation] with capital of €12,640,000 - Metropolitan community of Lille business registration



Tested for harmful substances.  
www.oeko-tex.com/standard100

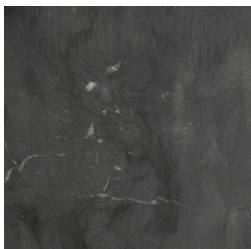


## MAIDEN COFFEE TABLE TOP

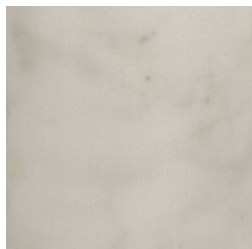


WHITE MARBLE

## LINE LAMP BASE

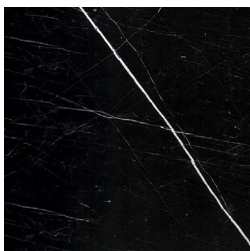


UNTREATED GREY  
MARBLE



WHITE MARBLE

## MAN TABLE TOP



BLACK MARQUINA  
MARBLE



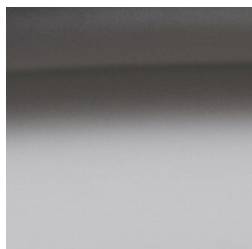
GREEN GUATEMALA  
MARBLE

CLOCHE



ALUMINIUM

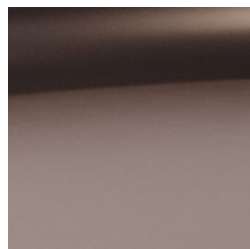
DUKE TABLE TOP



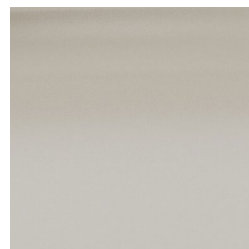
EARTH BLACK



ANTIQUE WHITE



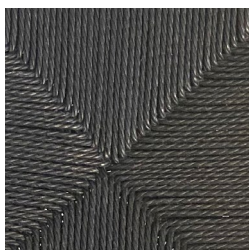
BRONZE



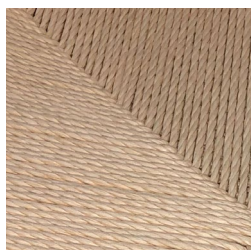
STONE

## PAPER CORD & RATTAN

PAPER CORD

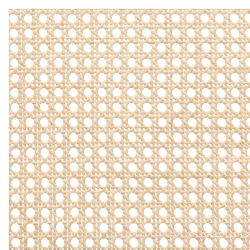


BLACK



NATURAL

FRENCH RATTAN



NATURAL

# PLASTIC SEAT ———

## LANGUE SHELL



ANTHRACITE  
PANTONE 19-0303



ARMY GREEN  
RAL 6006



BURGUNDY  
RAL 3007



FLINT GREY  
PANTONE 16-5803



ECRU  
RAL 1019



# TechnoCompound

*Creativity & Innovation in Plastics*

vorläufiges Datenblatt / *preliminary data sheet*

## TechnoFin PP GF 30 1 D 11 natur (86564)

Farbe / *Colour*: natur / *natural*

Einsatzgebiet / *Use*: Spritzgießen / *Injection molding*

<b>Eigenschaft / Property</b>	<b>Prüfbedingungen / Test condition</b>	<b>Einheit / Unit</b>	<b>Wert / Value</b>
Dichte / <i>Density</i>	ISO 1183	g/cm <sup>3</sup>	1,12
MVR	ISO 1133 / 230°C/2,16	cm <sup>3</sup> /10min	11
Glührückstand / <i>Ash content</i>	ISO 3451 (625°C)	%	30
Zug E-Modul / <i>Tensile modulus</i>	ISO 527	MPa	5700
Streckspannung / <i>Tensile strength at yield</i>	ISO 527	MPa	85
Streckdehnung / <i>Tensile strain at yield</i>	ISO 527	%	2,7
Charpy Schlagzähigkeit / <i>Charpy impact strength</i>	ISO 179 1eU +23°C	kJ/m <sup>2</sup>	45

### Verarbeitungsempfehlungen / *Processing recommendation*

Vortrocknung / <i>Drying process</i>	°C / h	80 / 2 - 4
Werkzeugtemperatur / <i>Tool temperature</i>	°C	30 - 60
Verarbeitungstemperatur / <i>Processing temperature</i>	°C	220 - 280

Alle angegebenen Werte sind Richtwerte.

Die Daten wurden an Prüfkörpern gemessen und befreien den Verarbeiter nicht von eigenen, dem Anwendungsfall entsprechenden Prüfungen.

Die angegebenen Daten stellen keine zugesicherten Eigenschaften dar.

# NORR11

NORR11.COM  
PARTNER.NORR11.COM