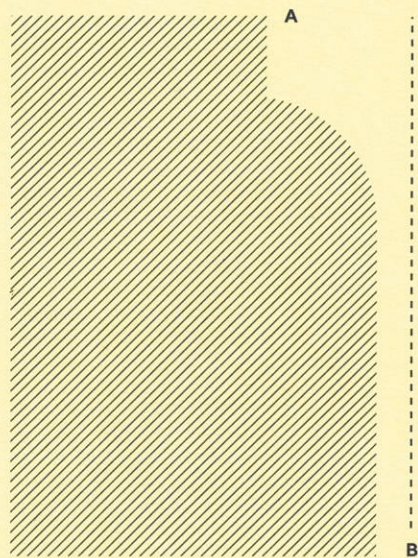
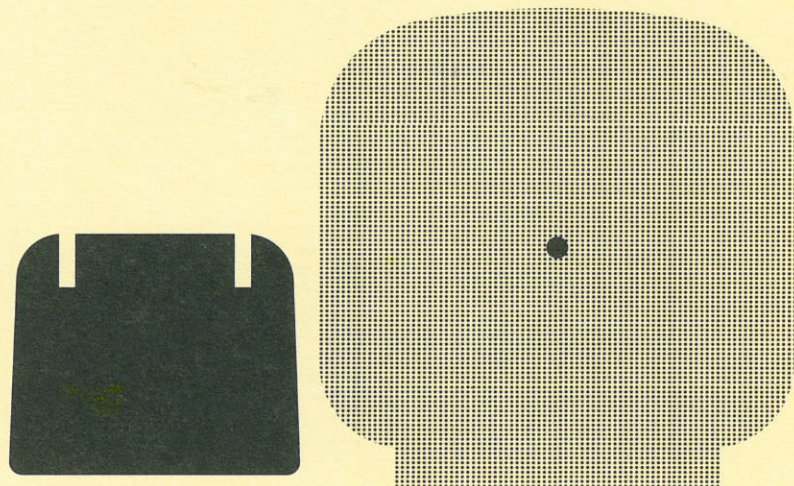


coverings



billiani
1911

INCA
Cat. Essential

MAGNUM
Cat. Select

**SOFT
UNITO**
Cat. Tailored

LUNA
Cat. Select

FLAMENCO
Cat. Select

**KING
L KAT**
Cat. Essential



Norma/Norm
ISO 5470-2

Dichiarato/Declared
100.000 cicli/rubs

Norma/Norm
ISO 5470-2

Dichiarato/Declared
200.000 cicli/rubs

Norma/Norm
ISO 12947-2

Dichiarato/Declared
190.000 cicli/rubs

Norma/Norm
ISO 12947-2

Dichiarato/Declared
60.000 cicli/rubs

Norma/Norm
ISO 12947-2

Dichiarato/Declared
80.000 cicli/rubs



Norma/Norm
ISO 105-X12

Dichiarato/Declared
4/4 secco-umido
/ dry-wet

Norma/Norm
ISO 105-X12

Dichiarato/Declared
5/5 secco-umido
/ dry-wet

Norma/Norm
ISO 11640

Dichiarato/Declared
4/4 secco-umido
/ dry-wet

Norma/Norm
ISO 105-X12

Dichiarato/Declared
4/5 secco-umido
/ dry-wet

Norma/Norm
ISO 105-X12

Dichiarato/Declared
4/5 secco-umido
/ dry-wet

Norma/Norm
ISO 105-X12

Dichiarato/Declared
4/5 secco-umido
/ dry-wet



Norma/Norm
ISO 12945-2

Dichiarato/Declared
5

Norma/Norm
ISO 12945-2

Dichiarato/Declared
4

Norma/Norm
ISO 12945-2

Dichiarato/Declared
5



CLASSE 1 IM;
EN 1021/1-2;
BS 5852/1;
NF-P 92 503 - M2
CALIFORNIA TB 117;
IMO FTP CODE
307(88)/8;
ÖNORM B 3825

CLASSE 1 IM;
EN 1021/1-2;
BS 5852/1;
CALIFORNIA TB 117;
IMO FTP CODE
307(88)/8;
ÖNORM B 3825

ISO 1021/1

CLASSE 1;
CLASSE 1 IM;
CALIFORNIA TB 117;
EN 1021/1-2;
BS 5852/0-1;
IMO FTP CODE
307(88)/7-8; M1;
B1; NFPA 260

CLASSE 1 IM;
CRIB 5;
EN 1021/1-2;
BS 7176 MEDIUM
HAZARD

CLASSE 1 IM
CRIB 5; C1; M1; B1;
EN 1021/1-2; BS 7176
MEDIUM HAZARD;
IMO FTP CODE
307(88)/8;
CLASSE AM 18
NF D 60013;
CALIFORNIA TB 117;
ÖNORM B 3825



88% PVC;
6% PL; 6% CO

88% PVC;
7% PL; 4% CO;
1% PU/PC

100%
PELLE BOVINA
/BOVINE LEATHER
SPESSORE
/THICKNESS
0,9 - 1,1 mm

100%
TREVIRA CS

100%
LANA VERGINE
PURE NEW WOOL

100%
TREVIRA CS

INCA
Essential



1507

1191

0928

2366

2367

1649

1878

0924

MAGNUM
Select



2368

2369

2370

2371

2372

2373

2374

2375

SOFT UNITO
Tailored



2397

0953

2399

2398

0643

1181

0954

2439

LUNA
Select



0989

0660

0621

2377

1002

2376

2190

2378

FLAMENCO
Select



0897

2379

0871

2380

1052

0898

1492

0929

KING L KAT
Essential



1810

1119

1091

1092

1838

1088

1093

2381

LASER N
Cat. Essential

TWILL-TWENTY
Cat. Tailored

CREDO
Cat. Tailored

BOEMIAN
Cat. Select

BRIONNE
Cat. Tailored

LINARI
Cat. Tailored



Norma/Norm
ISO 12947-2

Dichiarato/Declared
100.000 cicli/rubs

Norma/Norm
ISO 12947-2

Dichiarato/Declared
80.000 cicli/rubs

Norma/Norm
ISO 12947-2

Dichiarato/Declared
100.000 cicli/rubs

Norma/Norm
ISO 12947-2

Dichiarato/Declared
45.000 cicli/rubs

Norma/Norm
ISO 12947-2

Dichiarato/Declared
40.000 cicli/rubs

Norma/Norm
ISO 12947-2

Dichiarato/Declared
35.000 cicli/rubs



Norma/Norm
ISO 105-X12

Dichiarato/Declared
4/5 secco-umido
/ dry-wet

Norma/Norm
ISO 105-X12

Dichiarato/Declared
4/5 secco-umido
/ dry-wet

Norma/Norm
ISO 105-X12

Dichiarato/Declared
4/4 secco-umido
/ dry-wet

Norma/Norm
ISO 105-X12

Dichiarato/Declared
4/5 secco/dry
2/3 umido/wet

Norma/Norm
ISO 105-X12

Dichiarato/Declared
4/5 secco/dry
2/3 umido/wet

Norma/Norm
ISO 105-X12

Dichiarato/Declared
4/5 secco/dry
2/3 umido/wet



Norma/Norm
ISO 12945-2

Dichiarato/Declared
5

Norma/Norm
ISO 12945-2

Dichiarato/Declared
4-5

Norma/Norm
ISO 12945-2

Dichiarato/Declared
4-5

Norma/Norm
ISO 12945-2

Dichiarato/Declared
4

Norma/Norm
ISO 12945-2

Dichiarato/Declared
3-4

Norma/Norm
ISO 12945-2

Dichiarato/Declared
3-4



CRIB 5; C1; M1;
B1; EN 1021/1-2;
IMO FTP CODE
307(88)/8;
BS 7176 MEDIUM
HAZARD;
CLASSE AM 18
NF D 60013

CLASSE 1; M1;
B1; BS 5852
SOURCE 0;
BS 7176 MEDIUM
HAZARD; BS 5867;
IMO FTP CODE
307(88)/8;
CALIFORNIA TB 117

CLASSE 1 IM;
CALIFORNIA TB 117;
CRIB 5; BS 5852/1;
B2; EN 1021/1-2;
EN 13501-1; FAR
25.853 (12 SEC.
VERTICAL); BKZ: 5.3
SN 198898; IMO:
MED 2014/90/EU;
NF-P92 503-507 M2

CIGARETTE BS 5852/1
(1979) no FR foam;
CIGARETTE BS 5852
(2006) FR foam;
MATCH BS 5852/1
(1979) no FR foam;
MATCH BS 5852
(2006) FR foam;
CALIFORNIA TB 117

CIGARETTE BS
5852/1 (1979)
no FR foam;
CIGARETTE BS 5852
(2006) FR foam;
CALIFORNIA TB 117

CIGARETTE BS 5852
(2006) FR foam;
MATCH BS 5852/1
(1979) no FR foam;
MATCH BS 5852
(2006) FR foam;
CALIFORNIA TB 117



100%
TREVIRA CS

100%
PL FLAME
RETARDANT

95% WV;
5% PA

5% CO; 25% VI;
13% LI; 15% WO;
25% PL; 15% PC;
2% PA

18% CO; 31% PL;
26% WO; 22% PC;
3% PA

50% CO; 17% LI;
33% VI



Resistenza all'abrasione (cicli) – Martindale
Abrasion resistance (rubs) – Martindale



Solidità allo sfregamento (scala grigi)
Fastness to rubbing (grey scale)



Pilling / Pilling



Reazione al fuoco / Flammability



Composizione / Composition

LASER N
Essential



2382

2383

2384

2344

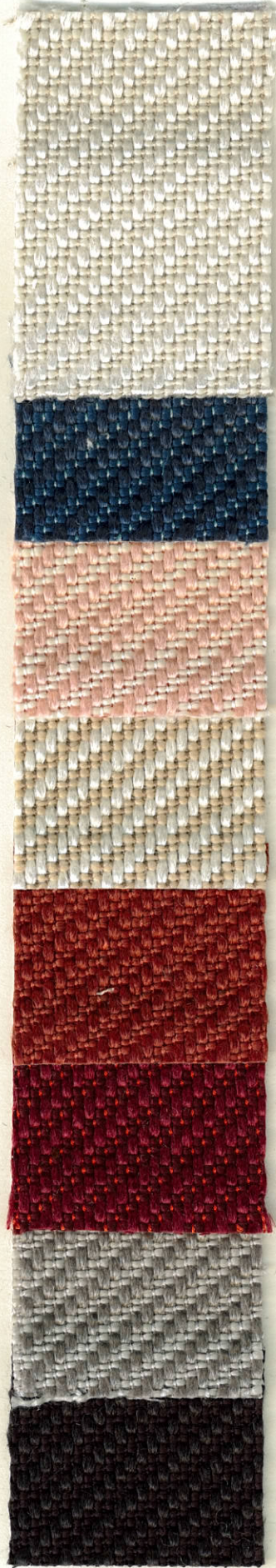
2385

2356

2386

2387

TWILLTWENTY
Tailored



2388

2392

2390

2275

2274

2391

2389

2393

CREDO
Tailored



2394

2284

2285

2282

2281

2283

2395

2396

BOEMIAN
Select



2400

2401

2402

2403

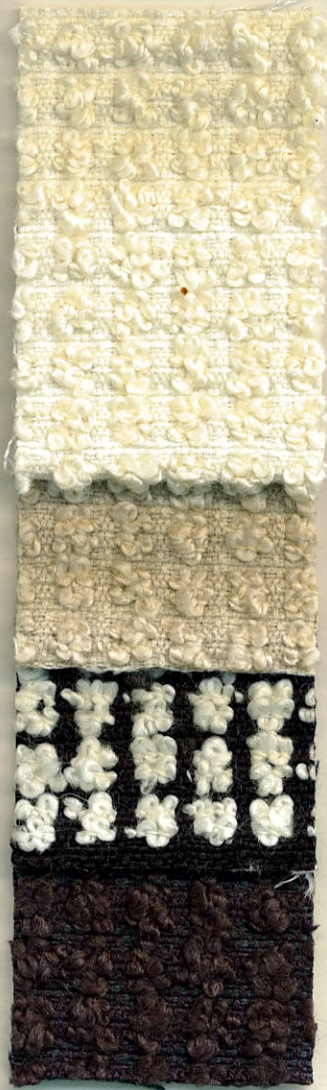
2404

2405

2406

2407

BRIONNE
Tailored



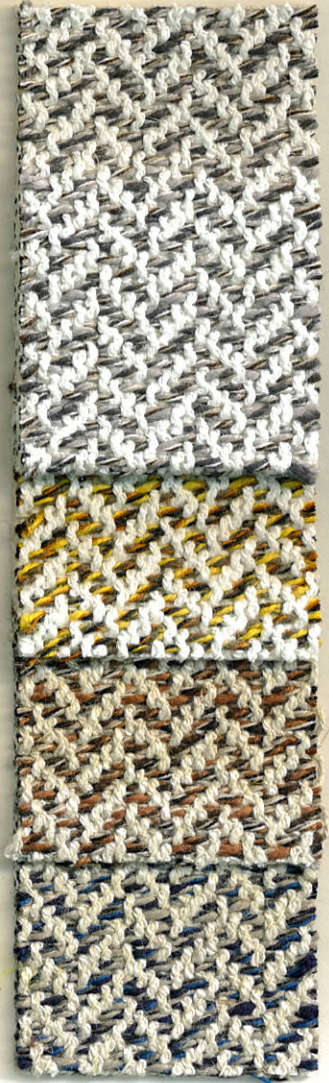
2408

2409

2410

2411

LINARI
Tailored



2412

2413

2414

2415

Billiani srl

Via della Roggia 28
33044 Manzano
(UD) Italia

T +39 0432 740180
F +39 0432 755953
info@billiani.it