

**living in colors.**

**cartella colori / colors card**

**2021**

m/home



# Quality

MyHome è il marchio di arredamento che nasce nel 2015 dall'esperienza della "famiglia" Alivar, nel distretto produttivo toscano tra Firenze e Siena, dove l'arte del saper fare artigiano nei settori della carpenteria, della sartoria e della lavorazione della pelle affondano le proprie radici. La collezione di arredi MyHome è dedicata ad ambienti residenziali e contract ed è rivolta a un pubblico giovane e attento alle nuove tendenze del design contemporaneo e alla qualità tutta italiana della manifattura. Ogni prodotto racconta perciò una storia, fatta di artigianato, saper fare, amore per il dettaglio e ricerca continua di soluzioni che si adattino all'evoluzione tecnologica nel campo produttivo.

Tutti i prodotti realizzati da MyHome restituiscono il concetto di Made and Manufactured in Italy, infatti tutto il processo creativo e produttivo è interamente realizzato in Italia da professionisti e da personale qualificato e dotato di competenza nel settore del mobile. La produzione artigiana del Made in Italy supera la logica del prodotto standardizzato e per questo garantisce un elevato livello di personalizzazione del prodotto. La qualità dei prodotti è garantita dall'attenzione sartoriale dei maestri artigiani, nella cura del dettaglio, nella scelta dei materiali e delle finiture; qualità progettuale, nella disponibilità alla personalizzazione, nella gestione dei piccoli lotti e nella stretta relazione con i fornitori. MyHome Collection è azienda certificata 100% Made In Italy ed è stata iscritta nel registro Nazionale dei Produttori Italiani. Il marchio 100% Made In Italy certifica che la fabbricazione del prodotto è interamente italiana, i semilavorati sono prodotti esclusivamente in Italia, sono utilizzate solo materie prime e componenti italiani di pregio e qualità selezionata di prima scelta. La lavorazione è tipica della tradizione italiana. L'intero processo di lavorazione aziendale è garantito con certificazione 100% Made in Italy rilasciata dall'Ente Produttori Italiani Certificato N° IT01.IT\_532.091.M.

MyHome is a furniture trademark created in 2015, based on the experience of the Alivar "family". It is located in the Tuscan production district between Florence and Siena, renowned for skilled craftsmanship in the fields of metalwork, tailoring and leatherworking. The MyHome collection of furnishings for residential and contract applications is aimed to a young audience interested in new contemporary design trends and the exceptional quality of Italian craftsmanship. Every product tells a story made of skills, know-how, attention to detail and constant research on solutions that adapt to technological evolution of production methods.

All the products made by MyHome epitomize the concept of Made and Manufactured in Italy. In fact, the entire process of their creation and production takes place in Italy, carried out by professionals and qualified staff with extensive experience in the furniture sector. The workmanship of Made in Italy goes beyond the logic of the standardized product, and thus ensures high levels of personalization for every item. The quality of the products is guaranteed by the sartorial skills of master craftsmen, based on painstaking attention to detail and careful selection of materials and finishes, excellent design, a wide variety of options for personalization, adapting to small production runs in close collaboration with suppliers. MyHome Collection is certified as 100% Made in Italy and listed in the National Registry of Italian Manufacturers. The 100% Made in Italy certification guarantees that products are entirely manufactured in Italy, using semi-finished products exclusively of Italian origin, as well as the finest Italian raw materials and components. The workmanship is based on the best aspects of the Italian tradition. The entire in-house production process is covered by the 100% Made in Italy Certificate issued by Italian Producers Corporation Certificate N° IT01.IT\_532.091.M.



# Fabrics



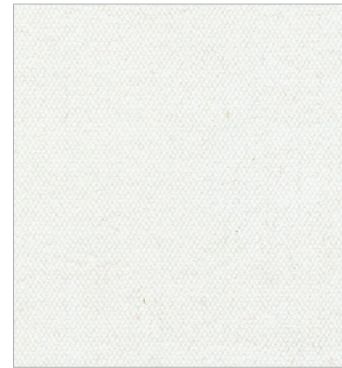
Abbiamo selezionato una innumerevole quantità di tessuti, dalle molteplici composizioni e dalle varianti colore e tonalità più disparate.

We have selected an innumerable quantity of fabrics, with multiple compositions and the most disparate colors and shades.





Tessuti - Fabrics



Cat. X 14046  
100%CO



Cat. X 14047  
100%CO



Cat. Y 22385  
85%PES-15%CO



Cat. Y 23277  
100%PL



Cat. Y 23313 VELVET  
100%PL



Cat. Y 23308  
68%PC-28%PL-4%VI



Cat. M 35099  
52%LI-48%VI



Cat. S 45405  
57%CO-38%VI-5%PA



Cat. Y 23291  
100%PL



Cat. Y 23209  
100%PL



Tessuti - Fabrics



Cat. X 14111  
75%CO-25%PL



Cat. M 35100  
52%LI-48%VI



Cat. Y 22386  
85%PES-15%CO



Cat. X 14096  
100%PL



Cat. Y 23219 VELVET  
100%PL



Cat. S 45403  
57%CO-38%VI-5%PA



Cat. Y 23276  
100%PL



Cat. Y 23290  
100%PL



Cat. Y 23210  
100%PL



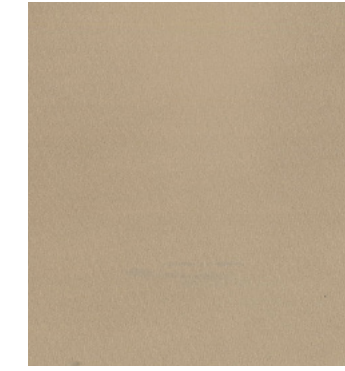
Cat. M 35101  
52%LI-48%VI



Cat. Y 23314  
63%CO-29%PL-8%AF



Cat. M 32509  
40%VI-20%PL-20%CO-20%LI



Cat. X 14098 VELVET  
100%PL



Cat. X 14110  
75%CO-25%PL



Cat. X 14099 VELVET  
100%PL



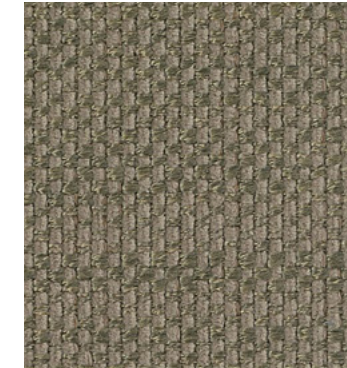
Cat. M 35117  
52%LI-48%VI



Cat. Y 23306  
68%PC-28%PL-4%VI



Cat. Y 23289  
100%PL



Cat. Y 23211  
100%PL



Cat. X 14100 VELVET  
100%PL



Cat. S 45402  
100%PL



Cat. Y 23307  
68%PC-28%PL-4%VI

Tessuti - Fabrics



Tessuti - Fabrics



Cat. X 14109  
75%CO-25%PL



Cat. Y 23288  
100%PL



Cat. Y 23297  
100%PL



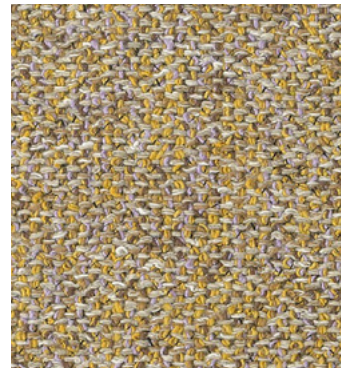
Cat. Y 23275  
100%PL



Cat. Y 23311 VELVET  
100%PL



Cat. X 14097 VELVET  
100%PL



Cat. Y 23261  
63%CO-29%PL-8%AF



Cat. Y 23304  
68%PC-28%PL-4%VI



Cat. S 45396  
FIRE RETARDANT BS 5852-BS 476 PART7-US



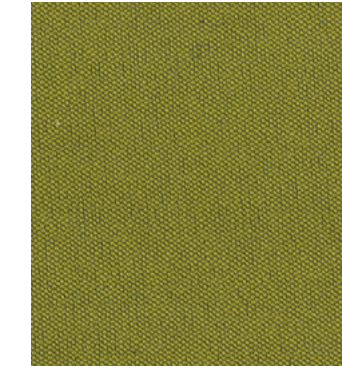
Cat. S 45397  
FIRE RETARDANT BS 5852-BS 476 PART7-US



Cat. Y 23283 VELVET  
100%PL



Cat. Y 23305  
100%PL



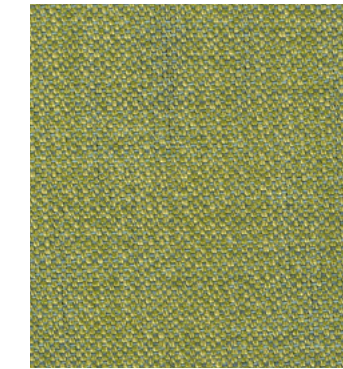
Cat. X 14108  
75%CO-25PL%



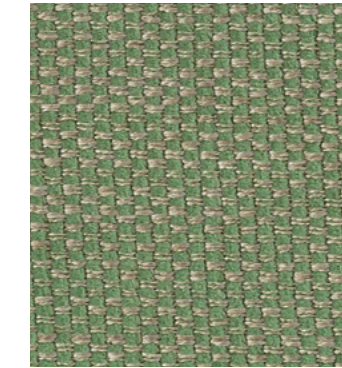
Cat. Y 23273  
100%PL



Cat. X 14095  
100%PL



Cat. Y 23287  
100%PL



Cat. Y 23296  
100%PL



Cat. Y 23221 VELVET  
100%PL



Cat. Y 23274  
100%PL



Cat. S 45401  
57%CO-38%VI-5%PA

Tessuti - Fabrics





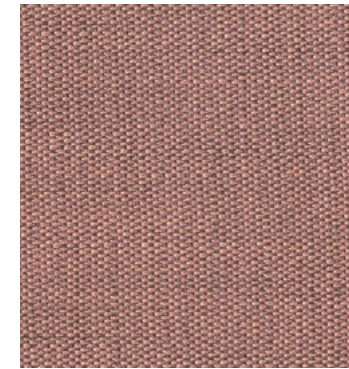
Tessuti - Fabrics



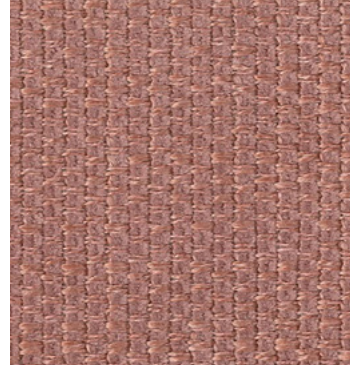
Cat. X 14029  
100%CO



Cat. S 45399  
57%CO-38%VI-5%PA



Cat. Y 23286  
100%PL



Cat. Y 23295  
100%PL



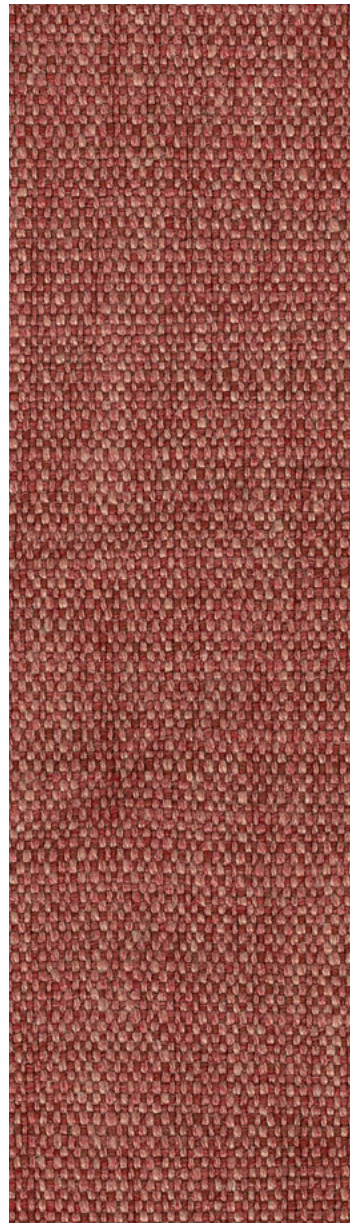
Cat. Y 23282 VELVET  
100%PL



Cat. S 45411  
39%VI-35%CO-16%PL-10%LI



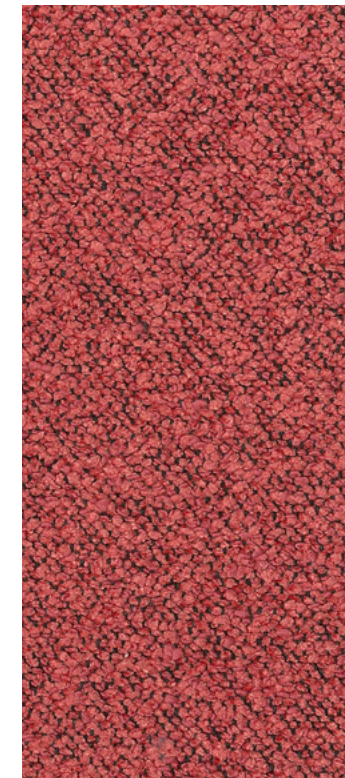
Cat. Y 23271  
100%PL



Cat. Y 23284  
47%PL-23%VI-18%LI-12%PC

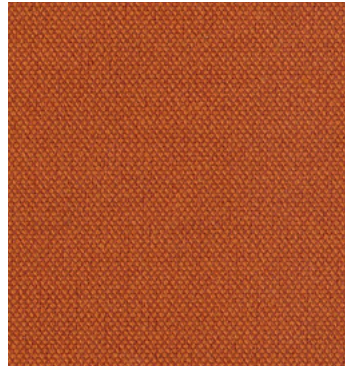


Cat. Y 23272  
100%PL



Cat. S 45400  
57%CO-38%VI-5%PA

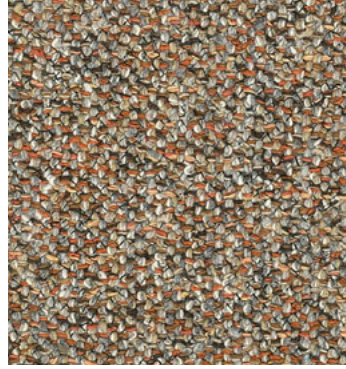




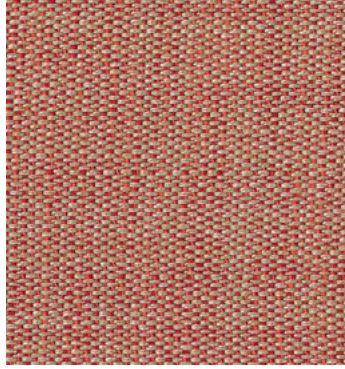
Cat. X 14105  
75%CO-25%PL



Cat. Y 23270  
100%PL



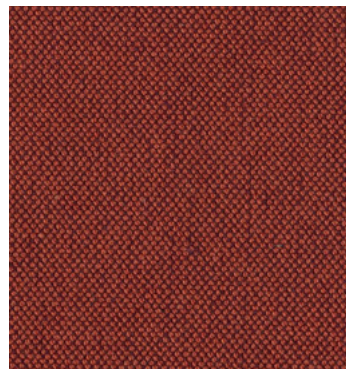
Cat. Y 23260  
63%CO-29%PL-8%AF



Cat. Y 23285  
100%PL



Cat. Y 23208  
100%PL



Cat. X 14106  
75%CO-25%PL



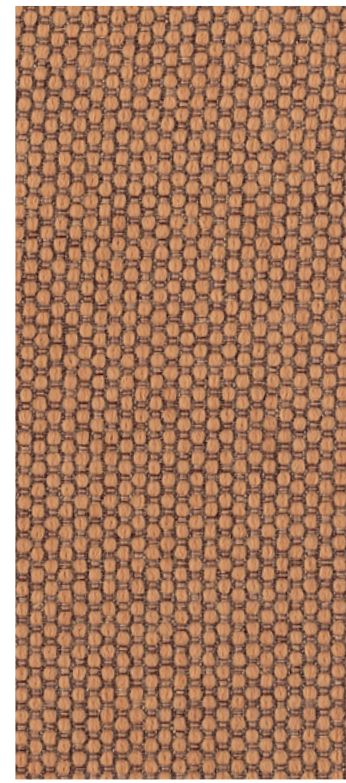
Cat. Y 23302  
68%PC-28%PL-4%VI



Cat. Y 23281 VELVET  
100%PL



Cat. S 45410  
39%VI-35%CO-16%PL-10%LI



Cat. S 45394  
FIRE RETARDANT BS 5852-BS 476 PART7-US



Cat. S 45395  
FIRE RETARDANT BS 5852-BS 476 PART7-US



Cat. X 14104  
75%CO-25%PL



Cat. Y 23268  
100%PL



Cat. Y 23280 VELVET  
100%PL



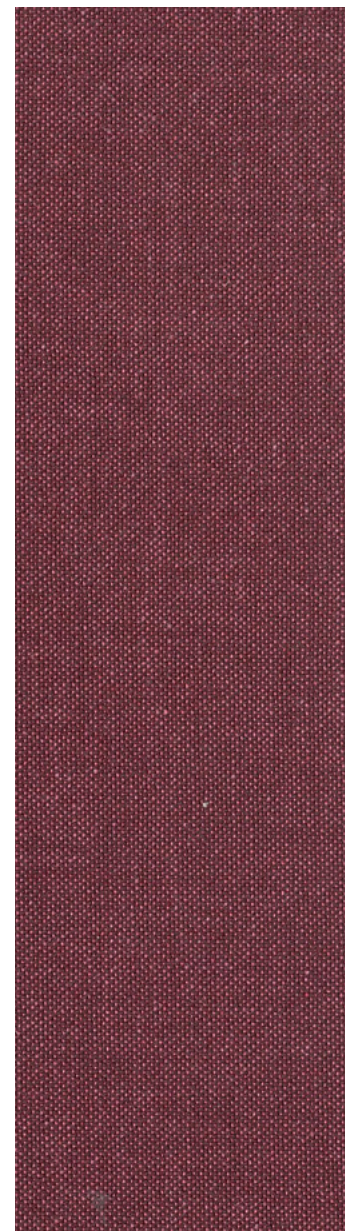
Cat. S 45408  
39%VI-35%CO-16%PL-10%LI



Cat. S 45393  
FIRE RETARDANT BS 5852-BS 476 PART7-US



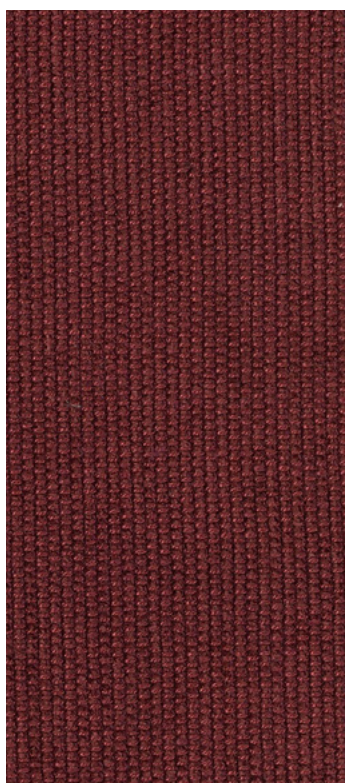
Cat. Y 23301  
68%PC-28%PL-4%VI



Cat. X 14107  
75%CO-25%PL



Cat. Y 23269  
100%PL



Cat. S 45409  
39%VI-35%CO-16%PL-10%LI



Cat. S 14102 VELVET  
100%PL





Tessuti - Fabrics



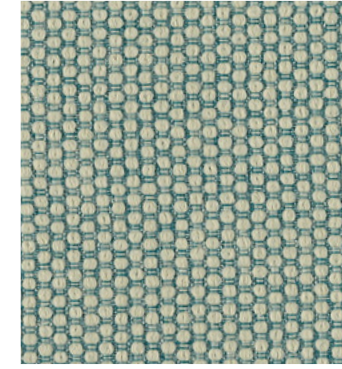
Cat. X 14034  
100%CO



Cat. Y 23266  
75%CO-25%PL



Cat. Y 23259  
63%CO-29%PL-8%AF



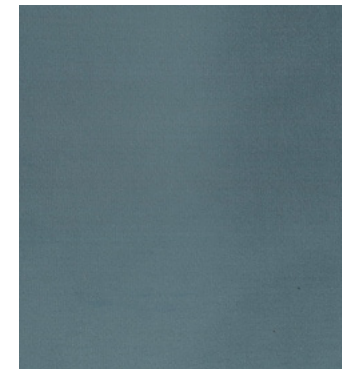
Cat. S 45392  
FIRE RETARDANT BS 5852-BS 476 PART7-US



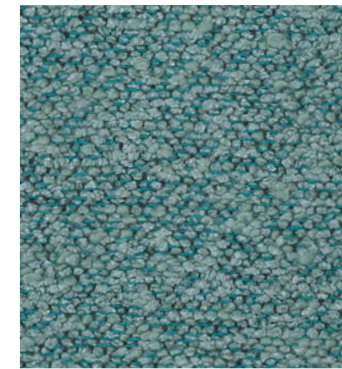
Cat. S 45406  
68%PC-28%PL-4%VI



Cat. Y 23206  
100%PL



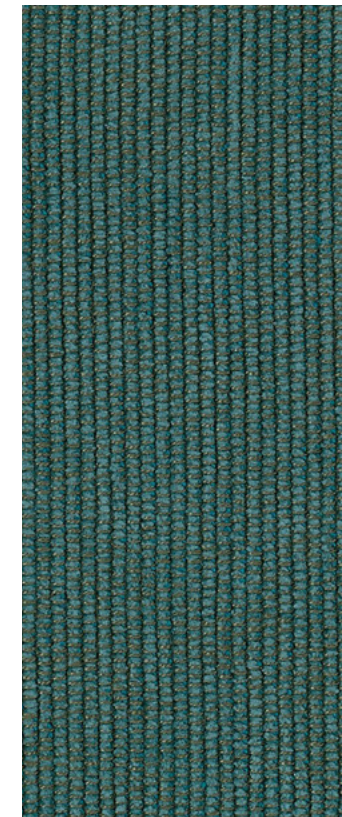
Cat. Y 23278 VELVET  
100%PL



Cat. S 45398  
57%CO-38%VI-5%PA



Cat. Y 23300  
68%PC-28%PL-4%VI



Cat. S 45407  
39%VI-35%CO-16%PL-10%LI



Cat. Y 23267  
75%CO-25%PL



Cat. Y 23279 VELVET  
100%PL





Cat. Y 23264  
75%CO-25%PL



Cat. X 14101 VELVET  
100%PL



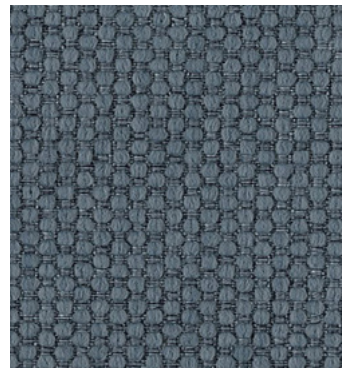
Cat. Y 23294  
100%PL



Cat. S 45389  
FIRE RETARDANT BS 5852-BS 476 PART7-US



Cat. S 45390  
FIRE RETARDANT BS 5852-BS 476 PART7-US



Cat. S 45391  
FIRE RETARDANT BS 5852-BS 476 PART7-US



Cat. M 35142  
52%LI-48%VI



Cat. X 14035  
100%CO



Cat. S 45390  
100%CO



Cat. Y 23265  
75%CO-25%PL



Cat. M 35104  
52%LI-48%VI



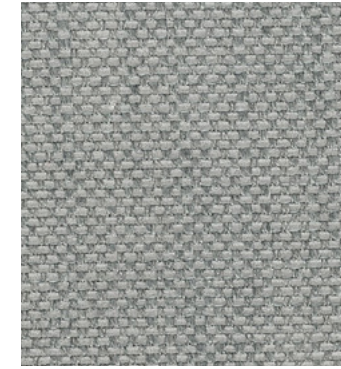
Cat. Y 23224 VELVET  
100%PL



Cat. Y 23299  
68%PC-28%PL-4%VI



Cat. Y 22388  
85%PES-15%CO



Cat. Y 23292  
100%PL



Cat. M 35103  
52%LI-48%VI



Cat. S 45426  
43%VI-36%CO-2%PV-3%LI



Cat. Y 23262  
75%CO-25%PL



Cat. Y 22423  
85%PES-15%CO



Cat. Y 23263  
75%CO-25%PL



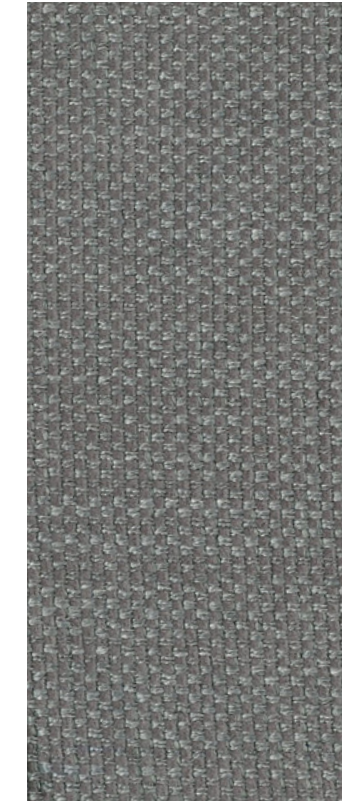
Cat. Y 23258  
63%CO-29%PL-8%AF



Cat. S 45373  
43%VI-36%CO-2%PV-3%LI



Cat. Y 22424  
85%PES-15%CO



Cat. Y 23293  
100%PL



Cat. X 14103  
75%CO-25%PL





Tessuti - Fabrics



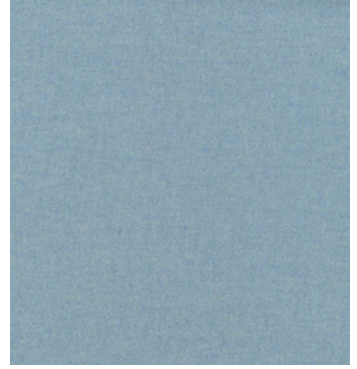
Cat. S 45412  
80%WO-20%PA FIRE RETARDANT



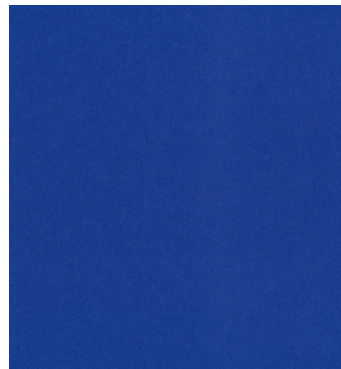
Cat. S 45413  
80%WO-20%PA FIRE RETARDANT



Cat. S 45414  
80%WO-20%PA FIRE RETARDANT



Cat. S 45415  
80%WO-20%PA FIRE RETARDANT



Cat. S 45416  
80%WO-20%PA FIRE RETARDANT



Cat. S 45417  
80%WO-20%PA FIRE RETARDANT



Cat. S 45418  
80%WO-20%PA FIRE RETARDANT



Cat. S 45419  
80%WO-20%PA FIRE RETARDANT



Cat. S 45420  
80%WO-20%PA FIRE RETARDANT



Cat. S 45421  
80%WO-20%PA FIRE RETARDANT



Cat. S 45424  
80%WO-20%PA FIRE RETARDANT



Cat. S 45425  
80%WO-20%PA FIRE RETARDANT



Cat. S 45422  
80%WO-20%PA FIRE RETARDANT



Cat. S 45423  
80%WO-20%PA FIRE RETARDANT





Velluti - Velvets



Cat. Y 23313 VELVET  
100%PL



Cat. Y 23219 VELVET  
100%PL



Cat. X 14098 VELVET  
100%PL



Cat. X 14099 VELVET  
100%PL



Cat. X 14100 VELVET  
100%PL



Cat. Y 23311 VELVET  
100%PL



Cat. X 14097 VELVET  
100%PL



Cat. Y 23288 VELVET  
100%PL



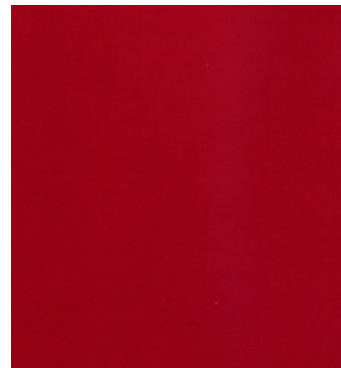
Cat. Y 23221 VELVET  
100%PL



Cat. Y 23282 VELVET  
100%PL



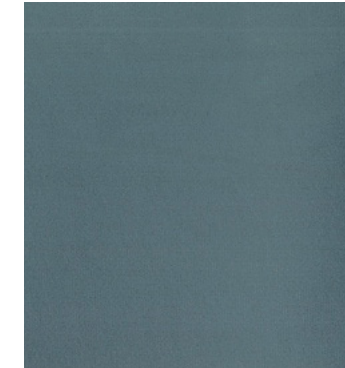
Cat. Y 23281 VELVET  
100%PL



Cat. Y 23280 VELVET  
100%PL



Cat. X 14102 VELVET  
100%PL



Cat. Y 23278 VELVET  
100%PL



Cat. Y 23279 VELVET  
100%PL



Cat. X 14101 VELVET  
100%PL



Cat. Y 23224 VELVET  
100%PL





# Leathers

La pelle naturale regala un'inimitabile sensazione tattile, una perfetta aderenza alle forme e un comfort straordinario.

Natural leather offers an unbeatable feel, a perfect close fit and extraordinary comfort.



# cat. K

PELLI / LEATHERS



cat. K 02 white



cat. K 12 tan



cat. K 988 brown



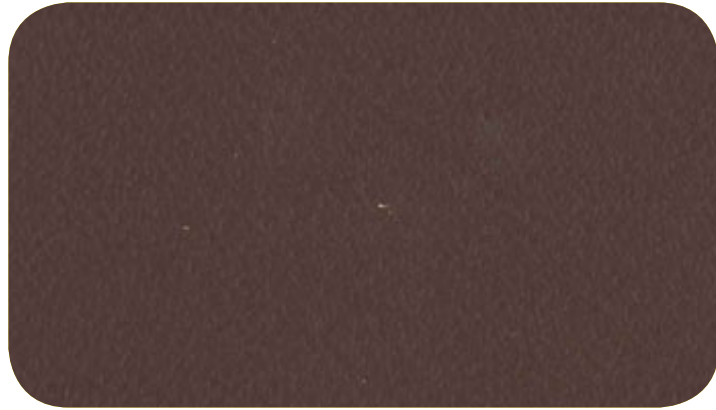
cat. K 80 cream



cat. 81 sand



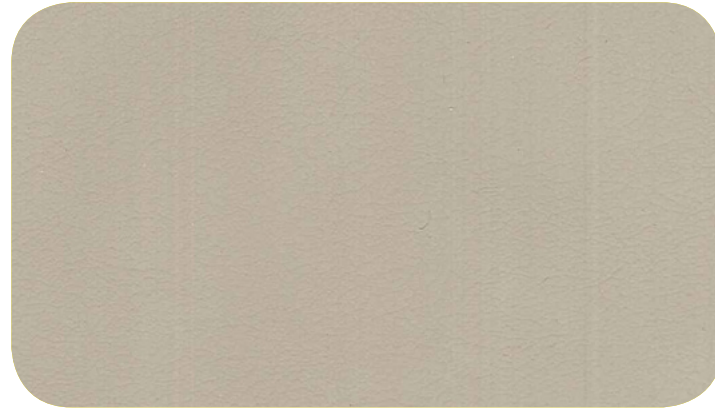
cat. K 23 moka



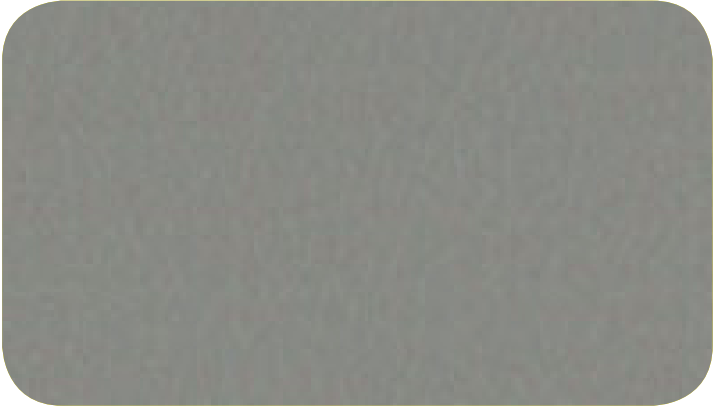
cat. K 24 bordeaux



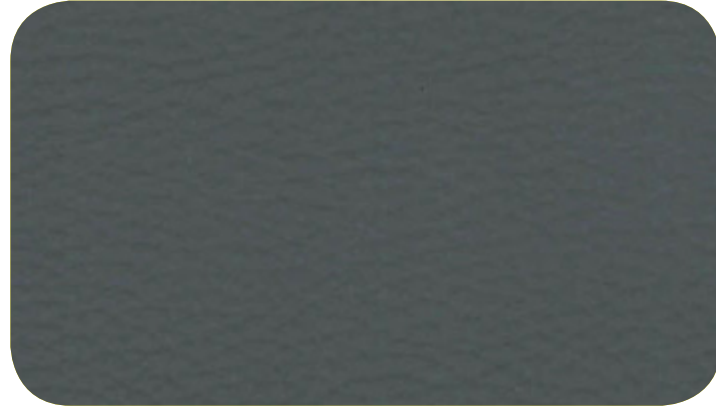
cat. K 830 warm grey



cat. K 16 dove brown



cat. K 840 grey



cat. K 04 dark grey



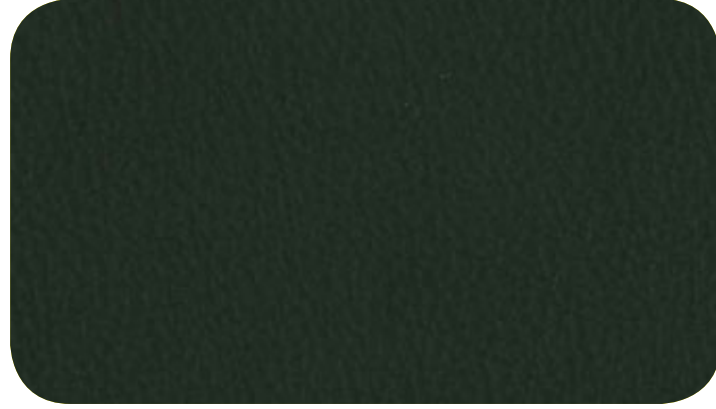
cat. K 022 cappuccino



cat. K 05 mud



cat. K 21 blue



cat. K 01 black





## cat. VIP

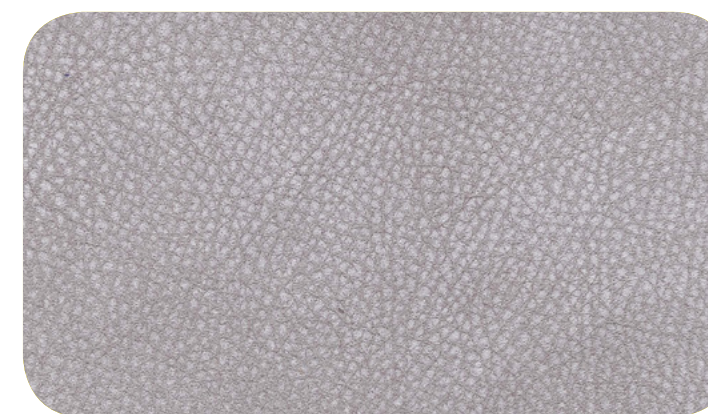
pelli / leathers

Pelli conciate al cromo, asciugate sottovuoto, rifinite con aniline e carteggiate manualmente ottenendo un effetto invecchiato. Particolarità di questo articolo è il connubio tra l'effetto "vintage" e un tatto vellutato.

Chrome-tanned leathers, dry vacuum leather finished with aniline and manually buffed obtaining a worn-look. A special combination between an old-fashioned vintage look and a superbly soft touch.



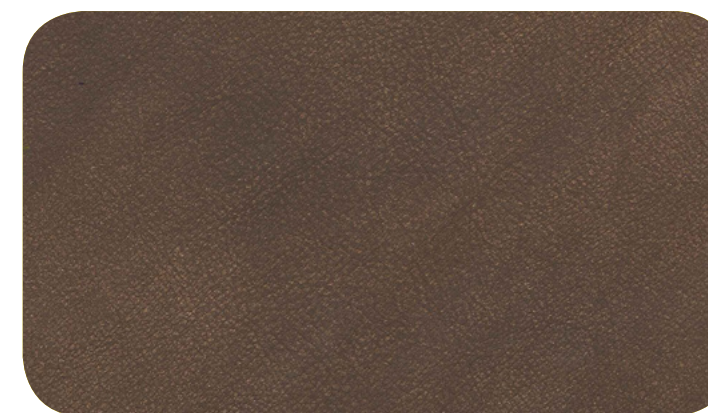
cat. VIP 72148 sand



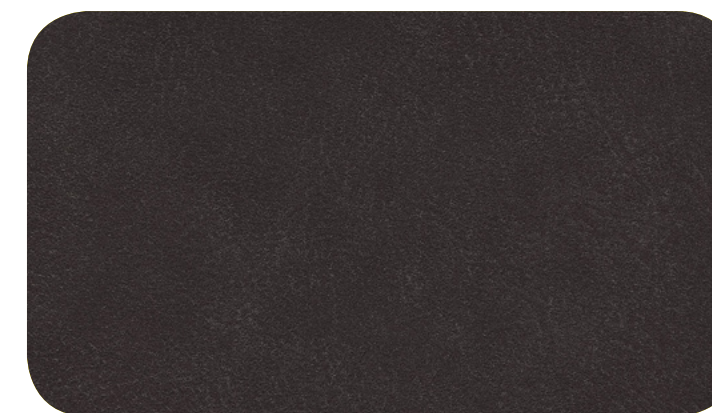
cat. VIP 72147 grey



cat. VIP 72153 rubin



cat. VIP 72150 moka



cat. VIP 72151 coffee



# cat. VIP

pelli / leathers



cat. VIP 72162 red corral



cat. VIP 72163 dusty rose



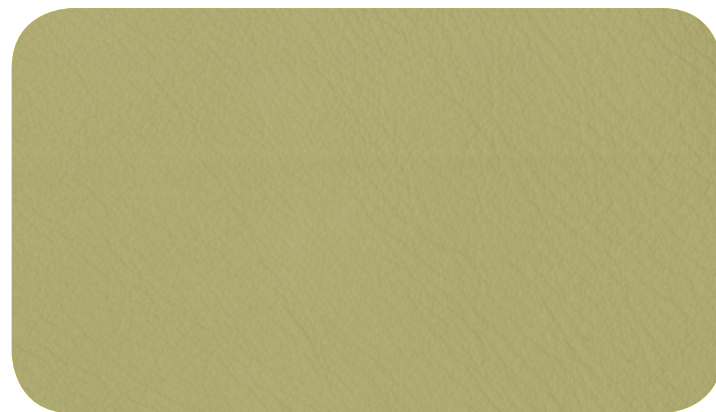
cat. VIP 72164 apricot



cat. VIP 72165 aquamarine



cat. VIP 72166 sage



cat. VIP 72157 pistachio



cat. VIP 72161 green

# cat. TOP

pelli / leathers

Pelli conciate al cromo, asciugate sottovuoto, rifinite con aniline e carteggiate manualmente ottenendo un effetto invecchiato. Particolarità di questo articolo è il connubio tra l'effetto "vintage" e un tatto vellutato.

Chrome-tanned leathers, dry vacuum leather finished with aniline and manually buffed obtaining a worn-look. A special combination between an old-fashioned vintage look and a superbly soft touch.



cat. TOP 82144 yellow



cat. TOP 80713 blue



cat. TOP 82142 brown





# Finishes

La purezza della materia prima, l'armonia dell'essenza e dell'identità del prodotto.

The purity of the raw material, the harmony of the essence and identity of the product.



# Laccature legno / Wood lacquers

---





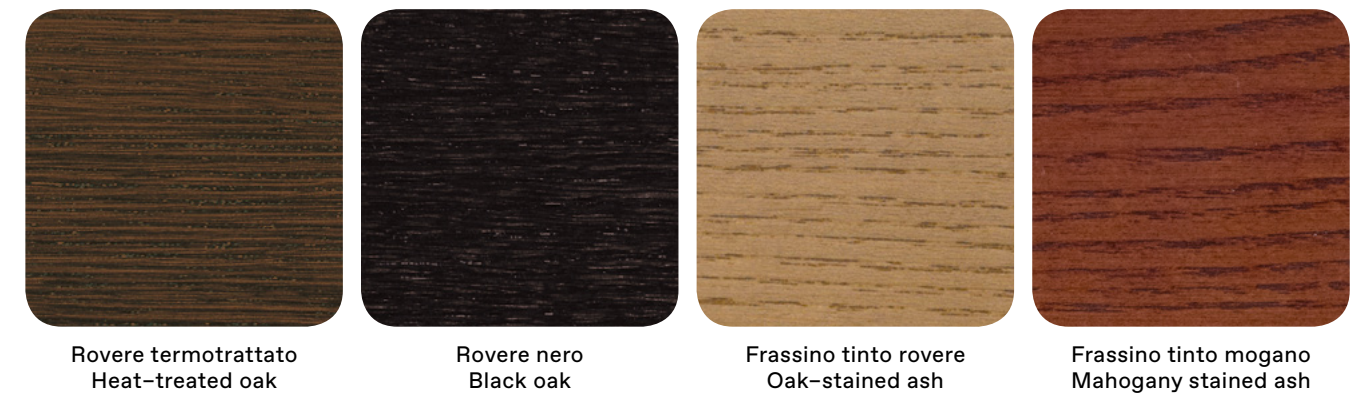
## Laccature epossidiche per metallo e laccature legno / Epoxy steel lacquers and wood lacquers



## Marmi / Marbles

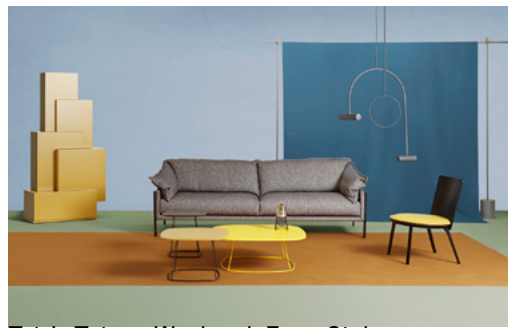


## Essenze / Wood





p. 018



Tetris Totem, Weekend, Free-Style, Riquadra Relax

p. 034



Ladybug, Lullaby, Cot, Baloo, Tetris

p. 050



Ladybug, Belte, Softly, Cot

p. 148



Esquina, Cloe, Oku

p. 156



Container, Riquadra Comfort, Riquadra, Aronte

p. 160



Bebop, Ula, Tetris Totem

p. 060



Container, Knit, Cot, Jolie

p. 072



Cocktail, Marrakech, Knit, Pretty

p. 080



Betty, Clou, Lok, Cocktail

p. 174



Vinnie, Bend, Baba Lounge, Boogie

p. 180



Ziggy, Mek, Long Island

p. 188



Chemise, Boogie, Belte, Mek, Konan

p. 094



Cocktail, Bulè, Chemise

p. 104



Belte, Babele, Jolie, Cocktail, Marrakech, Softly One, Cocoon, Mek

p. 116



Carmen, Boogie, Kom

p. 194



Ziggy, Free-Style, Chemise, Dress, Belte

p. 198



Betty, Pretty, Cot, Mise, Bulè, Marrakech, Cocktail

p. 202



Arcom, Face, Marrakech, Onda

p. 126



Cocktail, Baloo, Babele, Larsen, Cot

p. 132



Bulè, Pretty, Twiggy, Cocktail, Wilma

p. 138



Zazu, Dub, Esquina

p. 214



Cocktail, Sleepway, Bulè, Mek, Betty



My home collection s.r.l.  
118 / 12 v. Leonardo Da Vinci  
50028 Sambuca Val di Pesa  
Firenze - Italy

T. +39 055 80 70 202  
F. +39 055 80 70 185  
info@myhomecollection.it  
www.myhomecollection.it

↳ 100% Made in Italy  
certificate N° IT01.IT\_532.091.M  
National register of Italian  
manufacturers



m/home