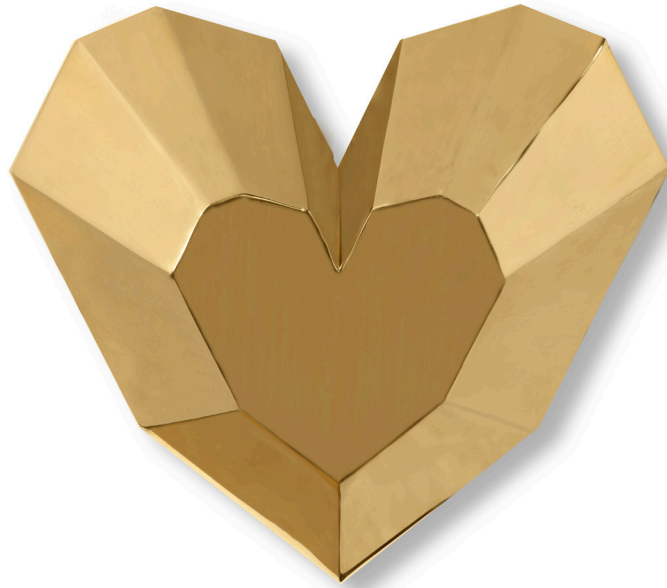


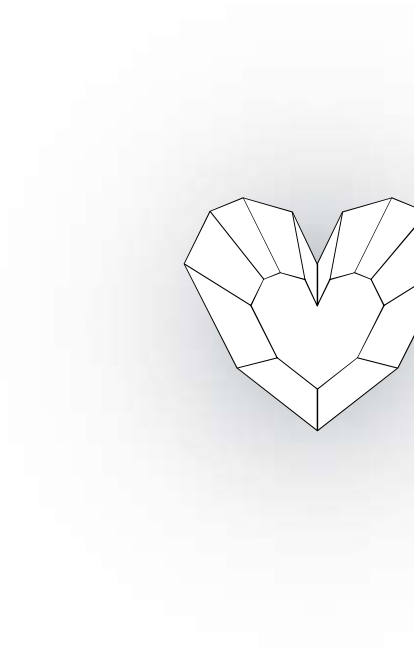
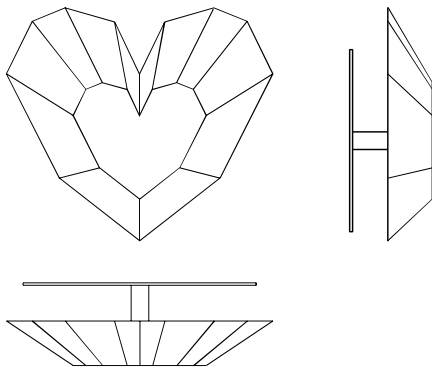


Queen Heart Wall Lamp





Queen Heart Wall Lamp



AS PICTURED

Body Polished brass.

FINISH OPTIONS

Body Available in brass, stainless steel and copper with polished or brushed finish, or lacquered in all NCS/RAL colors with matte or glossy finish.

TECHNICAL INFORMATION

Bulb 1x G9 LED Max 45W | 230V

TECHNICAL INFORMATION

Dimensions

W 30cm | 11"

D 11cm | 4.3"

H 27cm | 10.6"

Weight

2 kg | 4.4 lbs

SHIPPING INFORMATION

Packed in cardboard box

Dimensions

W 35cm | 13.7"

D 31cm | 12.2"

H 22cm | 8.6"

Weight

2.6 kg | 4.4 lbs

Volume

0.02 m³ | 0.84 ft³