

Dot

Designer: Patrick Norguet  
Year: 2015

Dot armchair embraces the symbolic values of the ideal home and turns them into soft curves, embracing geometries, tactile feelings and simple lines. Its project is characterized by a unique and continuous shape, with a curved backrest which gently becomes a structural element, while the padding gives stability and comfort to the seat, raised by a contrasting basement shape, available in wood and metal.

Developed by Tacchini in Italy

Dimensions (cm)

Cod. ODOT87

W 87 D 81 H 92 cm  
H seat 42 cmNon-removable  
coversCAD Files:  
3D (.dwg, .3ds)  
2D (.dwg)Download CAD  
files at [tacchini.it/  
en/downloads](http://tacchini.it/en/downloads)

---

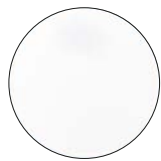
**Materials description**

Internal frame: cold foam with metal inserts, feather seat cushion.

Base: can be in open pore stained solid ash wood or in metal powder-coated painted.

---

Metal base



T02  
White



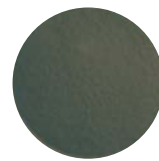
T04  
Grey RAL 7022



T07  
Black RAL 9011



T08  
Brown RAL 8019



T61  
Green RAL 6014

Wooden base



T43  
Dark Walnut

---

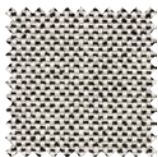
Suggested upholsteries



Bakul



Davidia



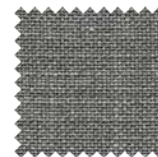
Erodium



Lars



Silene



Thesium



---

### Patrick Norguet

Patrick Norguet is a key figure in French design today, and was elected “furniture designer of the year” by Wallpaper magazine in 2009. He began his career as a project designer in the late nineties, working with numerous big names in the furniture design world, in addition to completing a number of interior and set design projects. He has always sought to select the right shapes and colours, exuding a love of innovative industrial processes, artisanal ateliers and the people working there.

Other products by Patrick Norguet:  
Atoll, Jacket.

---

### Tacchini Projects:



Okko Hotel  
Grenoble  
(Grenoble, France)



Okko Hotel  
Strasbourg  
(Strasbourg, France)



Okko Hotel  
Paris  
(Paris, France)